

FOR SALE

7,200 SF

RETAIL/OFFICE BUILDING



1801 REYNOLDS AVE, NORTH CHARLESTON, SC 29405

Harbor
COMMERCIAL PARTNERS

1801 Reynolds Ave, North Charleston, SC 29405

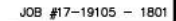
PROPERTY HIGHLIGHTS

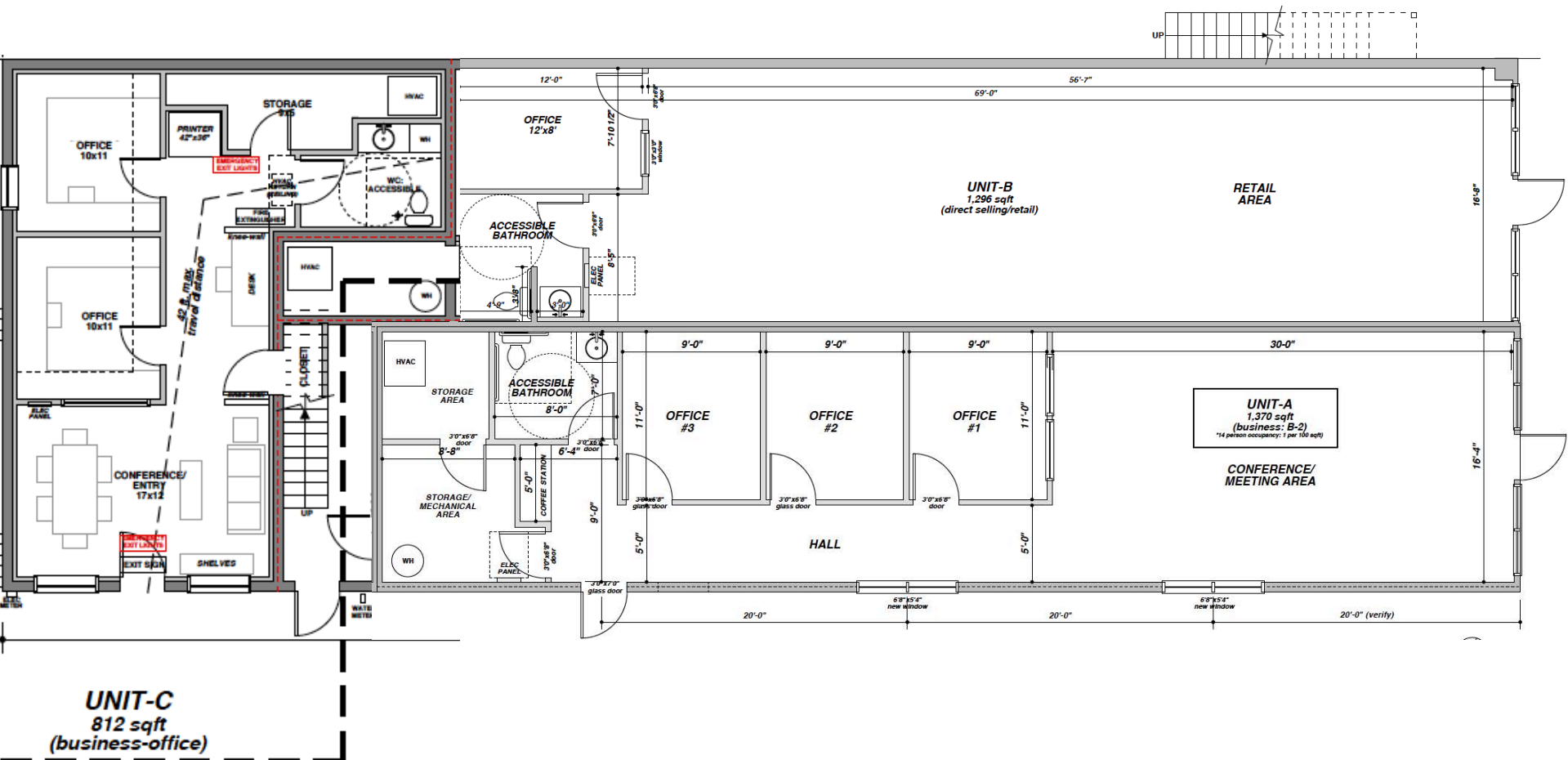
- Multi-tenant retail & office building for sale
- Property was renovated in 2018 - new roof, commercial plate glass storefront & windows
- High end interior finishes
- Off-street parking ratio of 2.5/1000
- Ample room for signage
- Flexible leases with opportunity for partial building occupancy for owner users
- Located in opportunity zone
- Adjacent to the “old navy base” off of Spruill Avenue between downtown Charleston and Park Circle



SPACE AVAILABLE

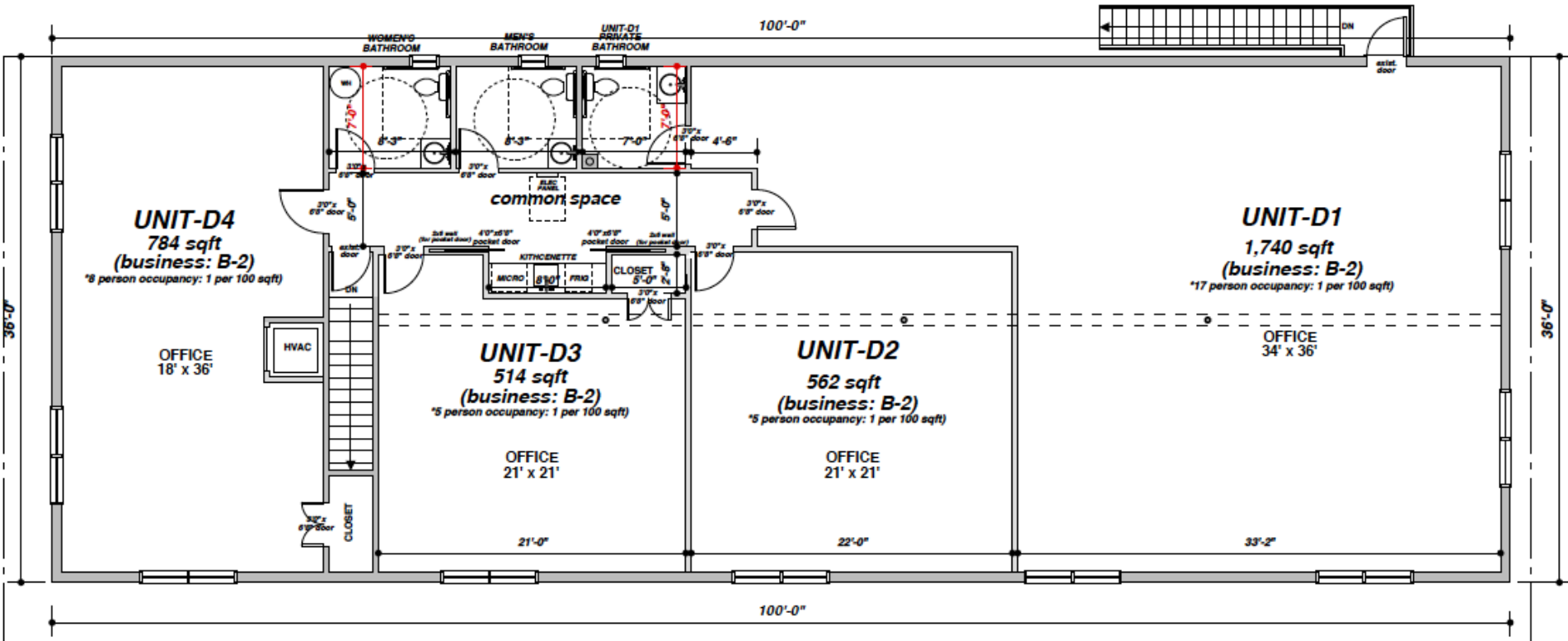
PARCEL ID	469-12-00-035
COUNTY	CHARLESTON
MUNICIPALITY	NORTH CHARLESTON
ZONING	B-2 GENERAL BUSINESS
YEAR BUILT	1963 (RENOVATED IN 2018)
LOT SIZE	0.24 ACRES
BUILDING SIZE	7,200 SF
PARKING	18 SPACES
OCCUPANCY	81%
PRICE	\$1,750,000





2ND FLOOR OFFICE FLOOR PLAN

1801 Reynolds Ave, North Charleston, SC 29405

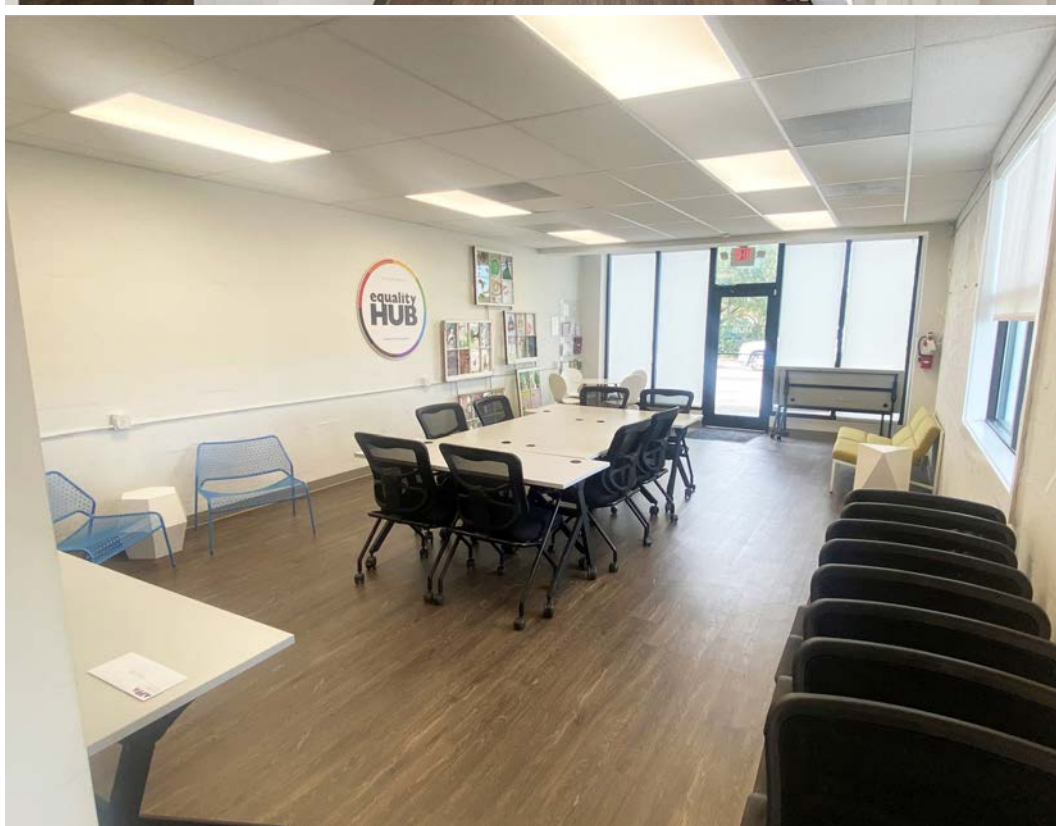


1801 Reynolds Ave, North Charleston, SC 29405



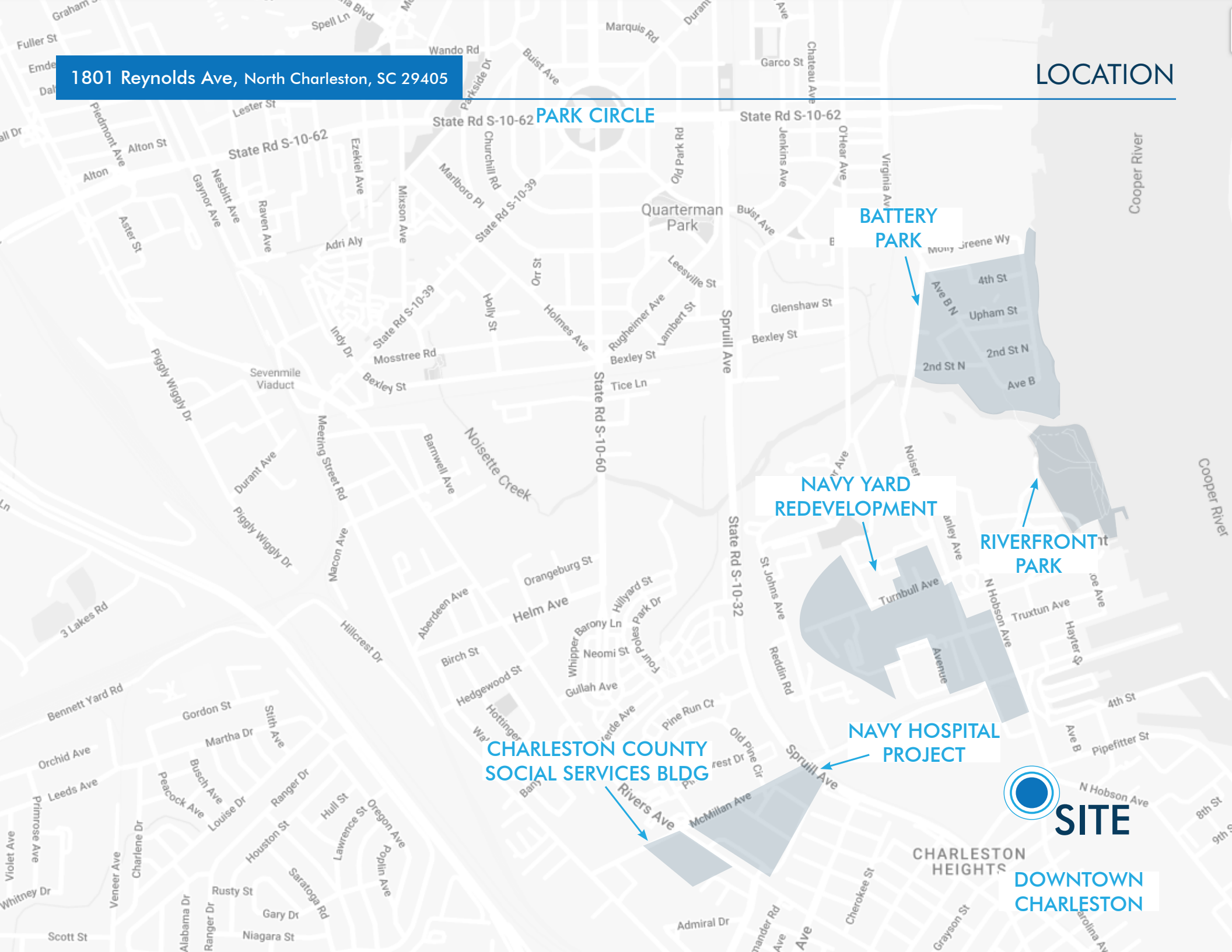


1801 Reynolds Ave, North Charleston, SC 29405



1801 Reynolds Ave, North Charleston, SC 29405

LOCATION



PARK CIRCLE

BATTERY PARK

NAVY YARD REDEVELOPMENT

RIVERFRONT PARK

CHARLESTON COUNTY SOCIAL SERVICES BLDG

NAVY HOSPITAL PROJECT



SITE

DOWNTOWN CHARLESTON



CONTACTS:

Tradd Varner, SIOR

Partner

+1.843.532.1684

tradd.varner@

harborcommercialpartners.com

Todd Garrett, CCIM, SIOR

Managing Partner

+1.843.408.8846

todd.garrett@

harborcommercialpartners.com

Crawford Riddle

Associate

+1.864.423.4973

crawford.riddle@

harborcommercialpartners.com

Harbor
COMMERCIAL PARTNERS

harborcommercialpartners.com