

# FOR LEASE

3,210 SF OFFICE



528 JOHNNIE DODDS BLVD, MOUNT PLEASANT, SC 29464

**Harbor**  
COMMERCIAL PARTNERS



## PROPERTY DESCRIPTION

Position your team in a bright, inviting 3,210 SF office suite located in one of Mount Pleasant’s most amenitized corridors. This second-floor space offers an inspiring work environment with natural light throughout, thanks to windows in every private office. A dedicated conference room and break area support flexible work styles and collaborative energy.

Near Whole Foods, Trader Joe’s, Starbucks, boutique retail, and local dining favorites, the location blends convenience with lifestyle—perfect for companies looking to attract and retain talent. Easy access to the Ravenel Bridge puts downtown Charleston minutes away, and the nearby lighted intersection ensures simple, stress-free access.

The property includes a prominent monument sign, ensuring strong branding and visibility in a high-traffic corridor. Pass thrus are approx. \$6.98 PSF.

## THE OFFERING

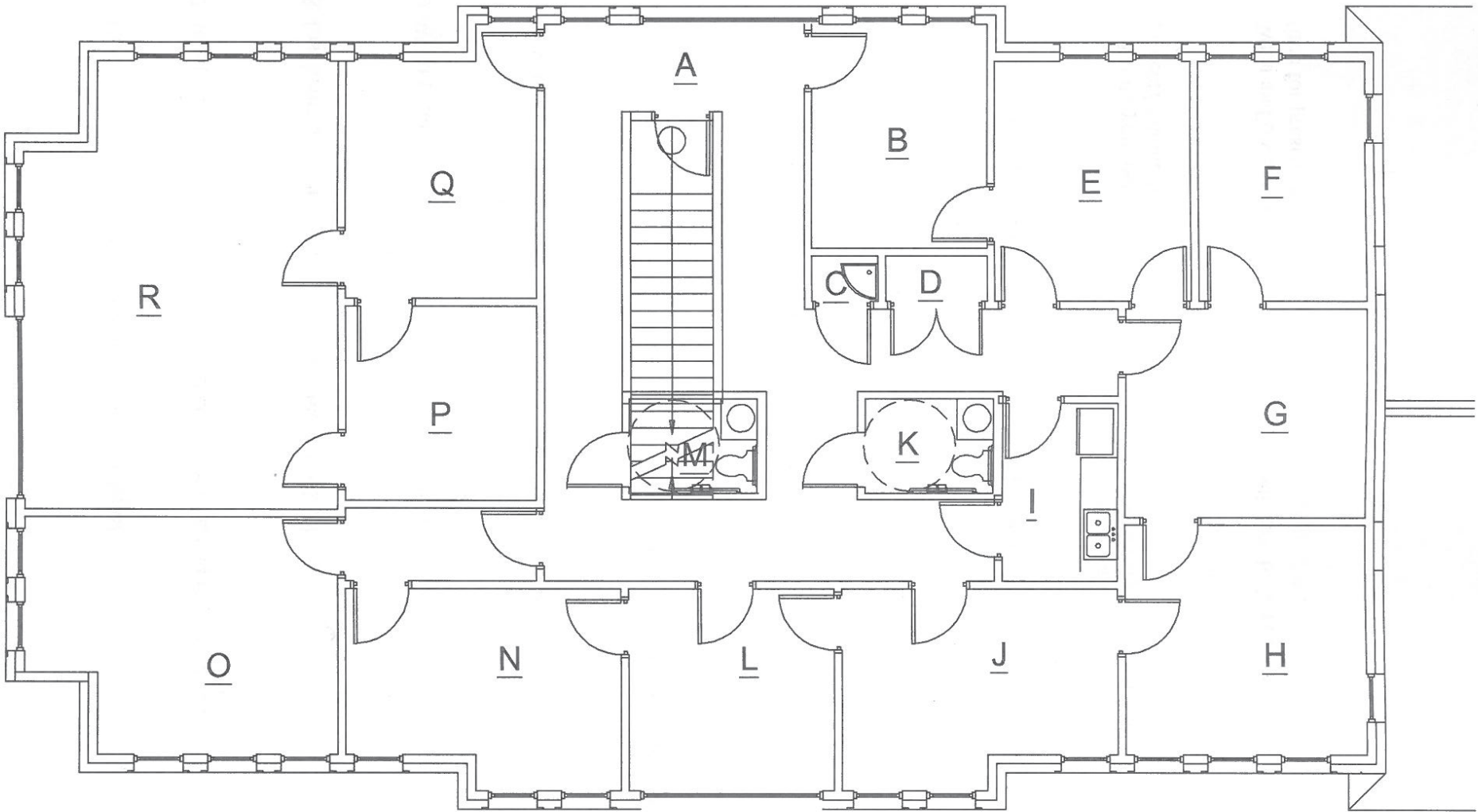
UNIT	SIZE	LEASE RATE	AVAILABLE
201	3,210 SF	\$25 PSF NNN	1/1/26

## PROPERTY SPECS

SPACE AVAILABLE	3,210 SF
BUILDING SIZE	7,700 SF
LEASE PRICE	\$25 PSF
NNN RATE	\$6.98 PSF
TAX ID/APN	514-00-00-177
COUNTY	Charleston
FLOOR	2
YEAR BUILT	2003
PARKING	Surface
CONSTRUCTION	Existing
ELEVATOR	No

FLOOR PLAN

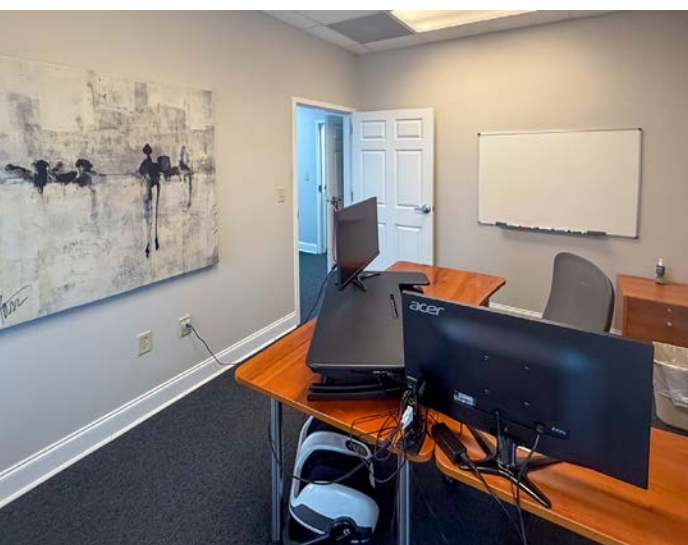
528 Johnnie Dodds Blvd, Mount Pleasant, SC 29464













# AMENITIES MAP

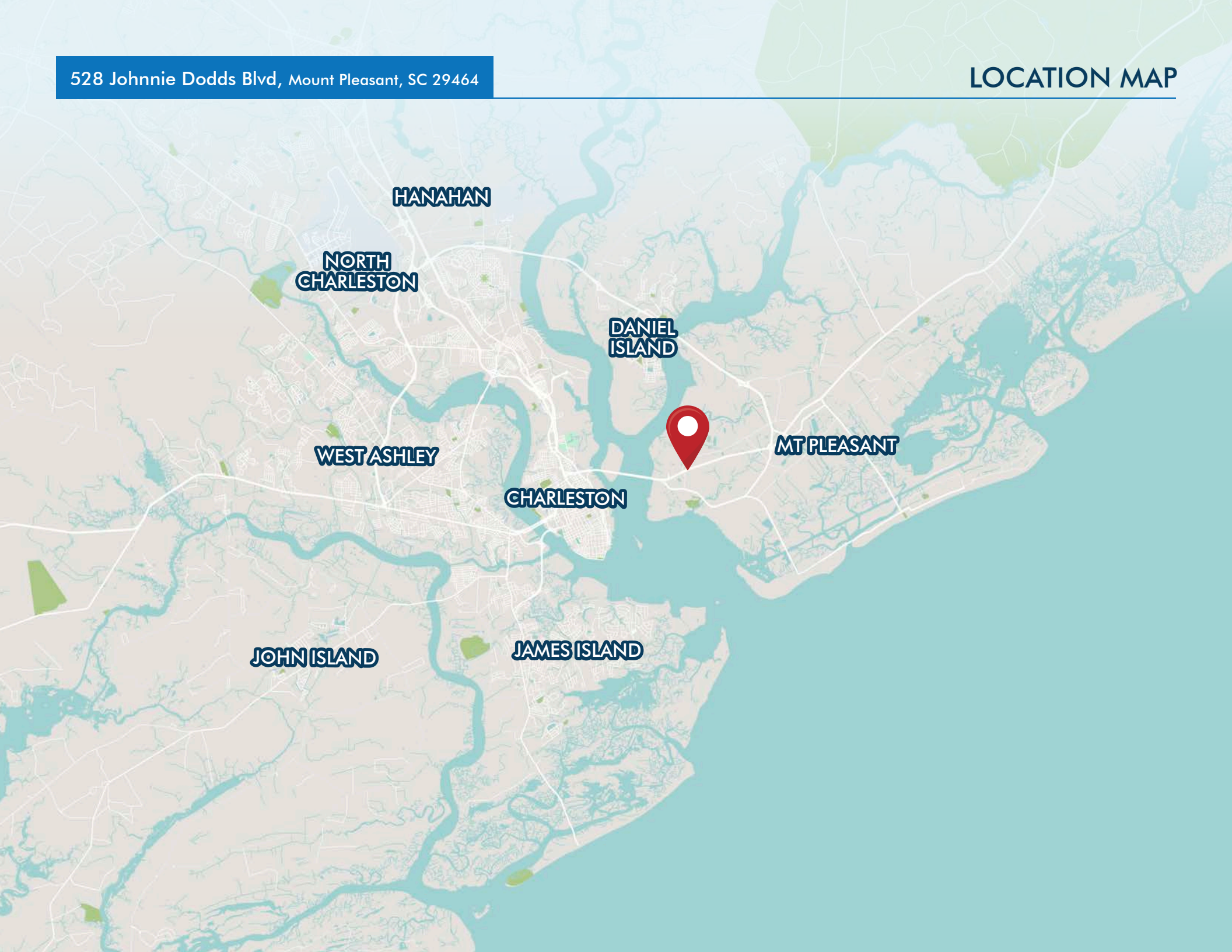
528 Johnnie Dodds Blvd, Mount Pleasant, SC 29464





528 Johnnie Dodds Blvd, Mount Pleasant, SC 29464

## LOCATION MAP







## LEASING CONTACTS:

Jeremy N. Willits  
Senior Vice President  
843.270.9205  
jeremy.willits@  
harborcommercialpartners.com

Gerry Schauer, CCIM  
Partner  
843.364.2055  
gerry.schauer@  
harborcommercialpartners.com

Mac Wiseman  
Associate  
571.228.7781  
mac.wisemand@  
harborcommercialpartners.com

**Harbor**  
COMMERCIAL PARTNERS  
[harborcommercialpartners.com](http://harborcommercialpartners.com)