

# FOR LEASE

562 SF & 784 SF  
OFFICE SPACES



1801 REYNOLDS AVE, NORTH CHARLESTON, SC 29405

1801 Reynolds Ave, North Charleston, SC 29405

## PROPERTY DESCRIPTION

1801 Reynolds Ave is a 7,200 SF multi-tenant retail and office building that is located near the historic Charleston Navy Base Redevelopment. The property was completely renovated in 2018 with a new roof, commercial plate glass store front and windows, with tenant spaces being constructed with high end interior finishes and an off-street parking ratio of 2.5/1000.

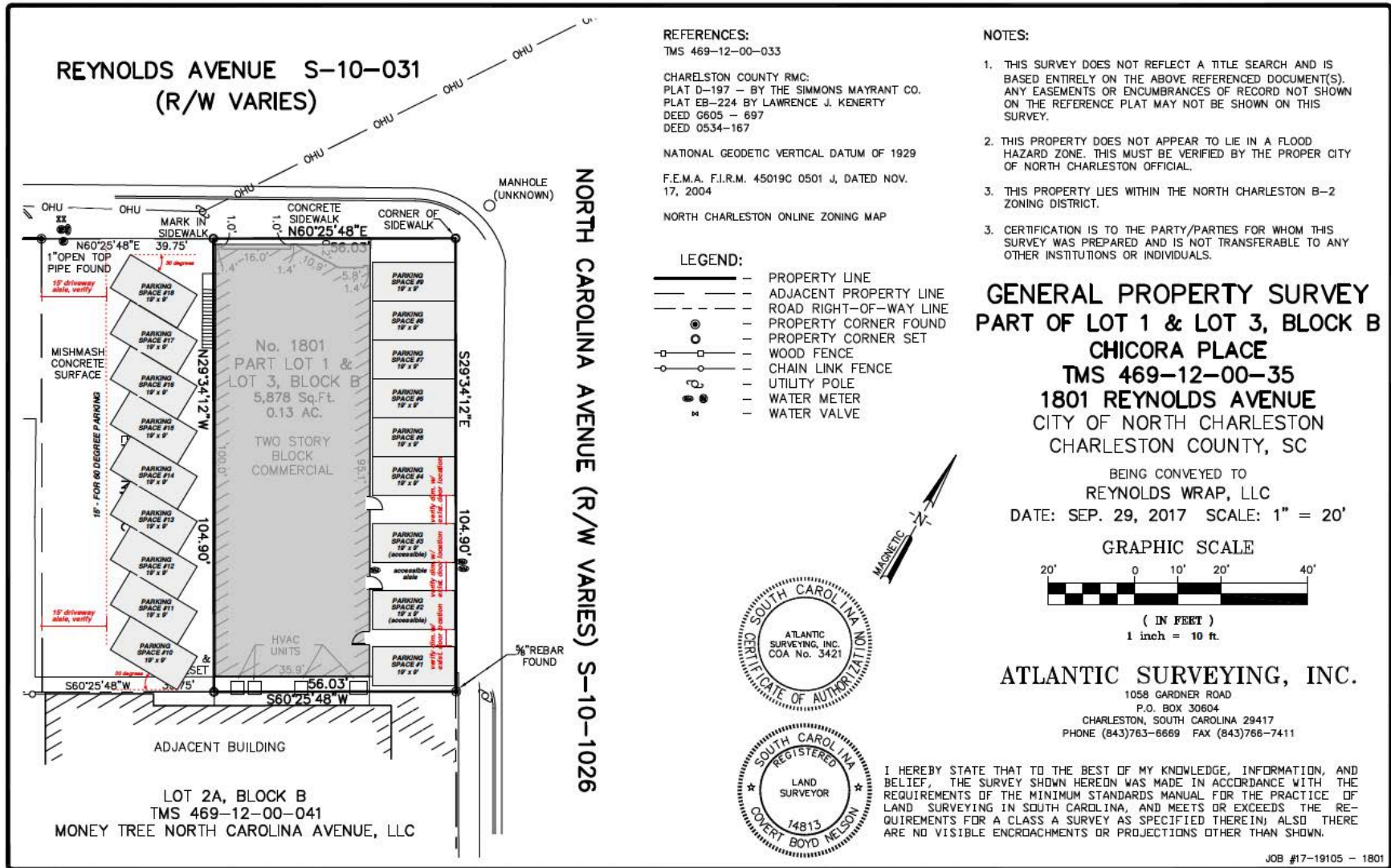
- D-1:** Second Floor office space with three large private offices with tons of natural lights, private stairwell entrance, private restroom and large open meeting areas.
- D-2:** Second floor large executive office with common area restrooms and kitchenette. Lease rate includes all NNN fees, Utilities, etc.
- D-4:** Second floor large executive office with common area restrooms and kitchenette. Lease rate includes all NNN fees, Utilities, etc.

## OFFERING

UNIT	SIZE	LEASE RATE	LEASE TYPE	DATE AVAILABLE
D-1	1,740 SF	\$19.00	FULL SERVICE	NOW
D-2	562 SF	\$21.00	FULL SERVICE	NOW
D-4	784 SF	\$21.00	FULL SERVICE	NOW

## SPACE AVAILABLE

PARCEL ID	469-12-00-035
COUNTY	CHARLESTON
MUNICIPALITY	NORTH CHARLESTON
ZONING	B-2 GENERAL BUSINESS
YEAR BUILT	1963 (RENOVATED IN 2018)
LOT SIZE	0.24 ACRES
BUILDING SIZE	7,200 SF
PARKING	18 SPACES
OCCUPANCY	81%







1801 Reynolds Ave, North Charleston, SC 29405



1801 Reynolds Ave, North Charleston, SC 29405



# LOCATION

1801 Reynolds Ave, North Charleston, SC 29405

PARK CIRCLE

BATTERY PARK

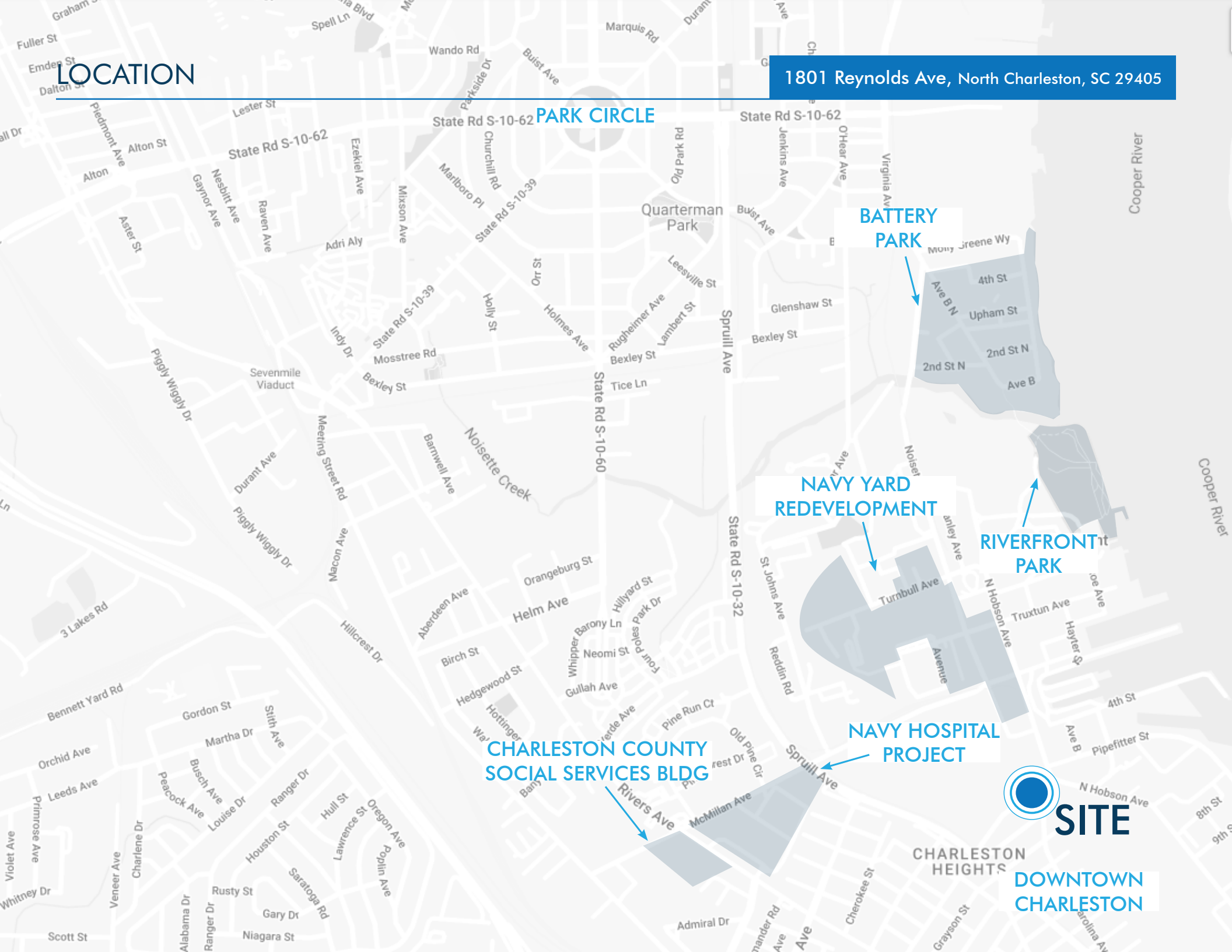
NAVY YARD REDEVELOPMENT

RIVERFRONT PARK

NAVY HOSPITAL PROJECT

CHARLESTON COUNTY SOCIAL SERVICES BLDG

  
**SITE**  
DOWNTOWN CHARLESTON





## CONTACTS:

**Tradd Varner, SIOR**

Partner

+1.843.532.1684

tradd.varner@

harborcommercialpartners.com

**Todd Garrett, CCIM, SIOR**

Managing Partner

+1.843.408.8846

todd.garrett@

harborcommercialpartners.com

**Crawford Riddle**

Senior Associate

+1.864.423.4973

crawford.riddle@

harborcommercialpartners.com

**Harbor**  
COMMERCIAL PARTNERS

harborcommercialpartners.com