

# FOR LEASE

1,485 SF OFFICE SUITES



498 WANDO PARK BLVD, Mount Pleasant, SC 29464

**Harbor**  
COMMERCIAL PARTNERS

498 Wando Park Blvd, Mount Pleasant, SC 29464

## PROPERTY DESCRIPTION

Known as the Wando Commons, this is a 4-building office park offering attractive single-story brick buildings in a handsome campus setting. Wando Commons provides your clients and employees the convenience of immediate access to Interstate 526, Mount Pleasant and the greater Charleston area. There are many nearby restaurants, a Starbucks, shopping and numerous other amenities for your employees to enjoy, all just minutes away.

Wando Commons provides an inviting work experience for your company employees and their visitors, all at an economical price. On-site parking is provided.

Tenants are responsible for utilities and janitorial services. Taxes, Insurance, and Common area maintenance fees are \$6.34 PSF.

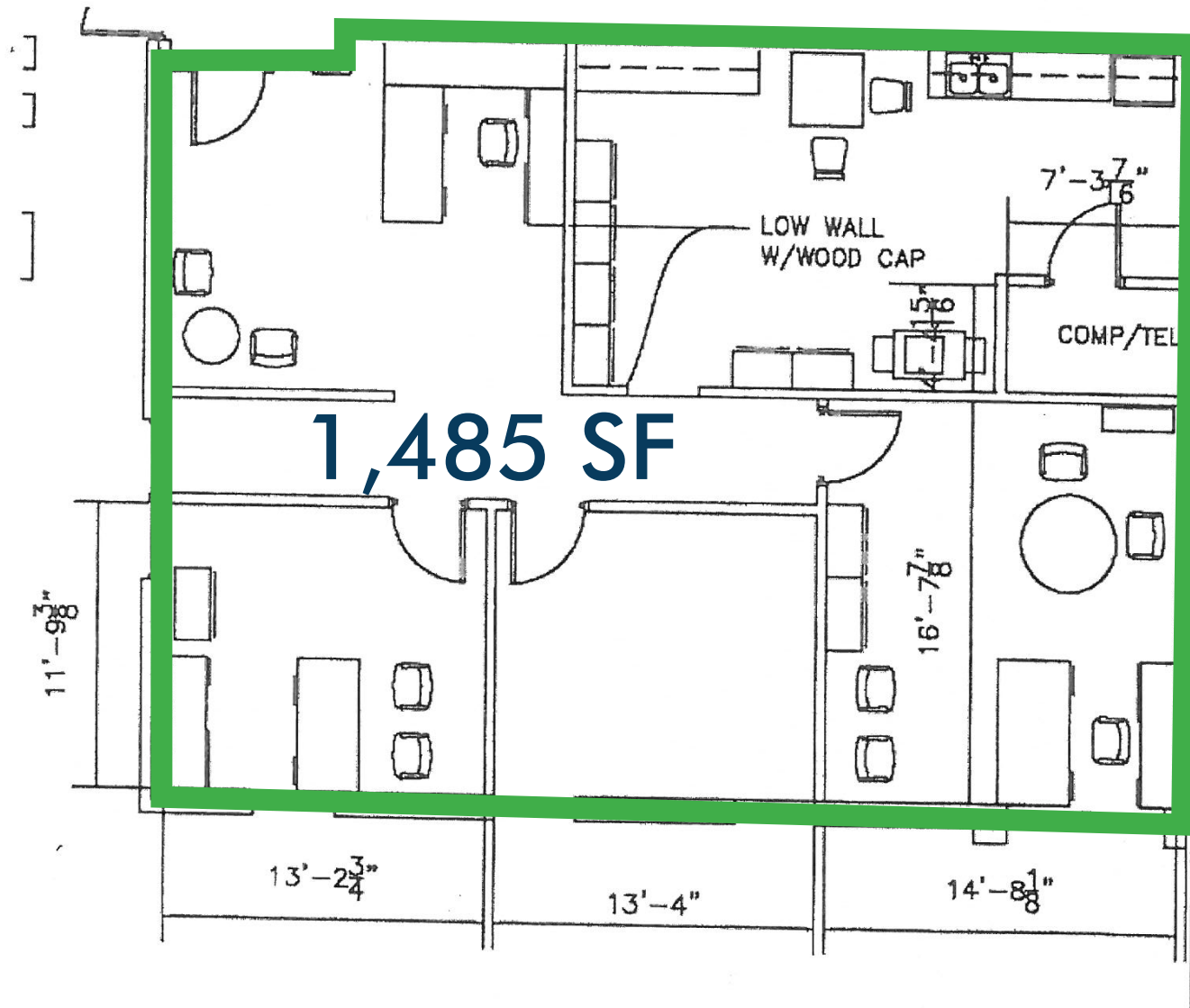
Come and enjoy the convenience and value of Wando Commons!

## THE OFFERING

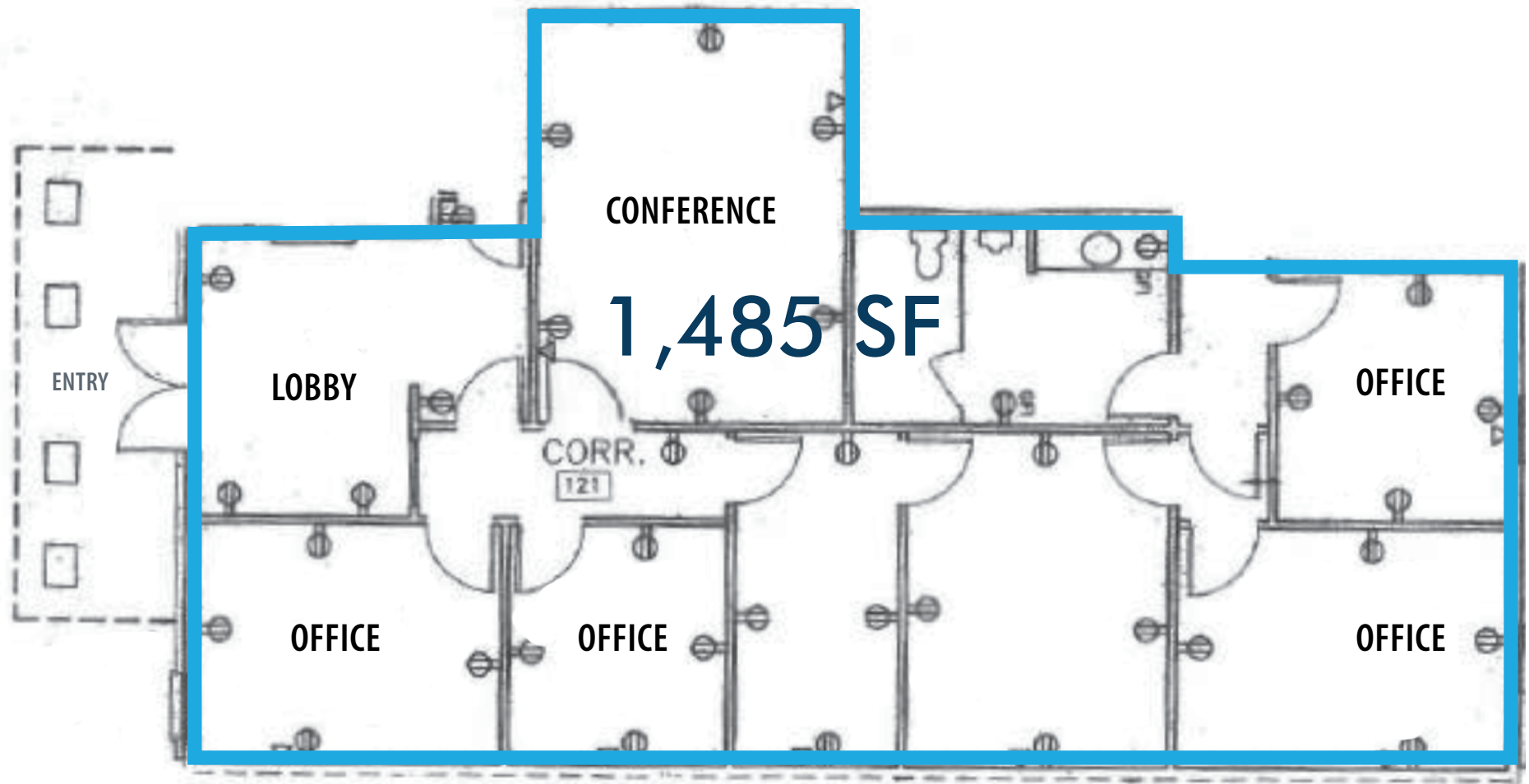
UNIT	SIZE	LEASE RATE	AVAILABLE
175	1,485 SF	\$25 PSF NNN	Now
1150	1,485 SF	\$25 PSF NNN	Now

## PROPERTY SPECS

SPACE AVAILABLE	1,485 SF
BUILDING SIZE	12,000 SF
LEASE PRICE	\$25 PSF
TAX ID/APN	537-00-00-043
COUNTY	Charleston
FLOOR	1
YEAR BUILT	1999
PARKING	Surface
ZONING	Commercial
CONSTRUCTION	Existing



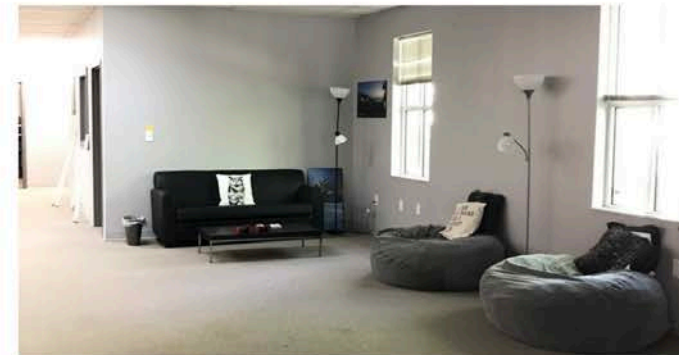
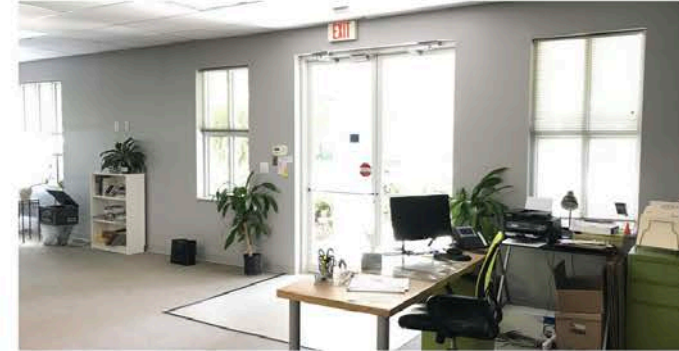
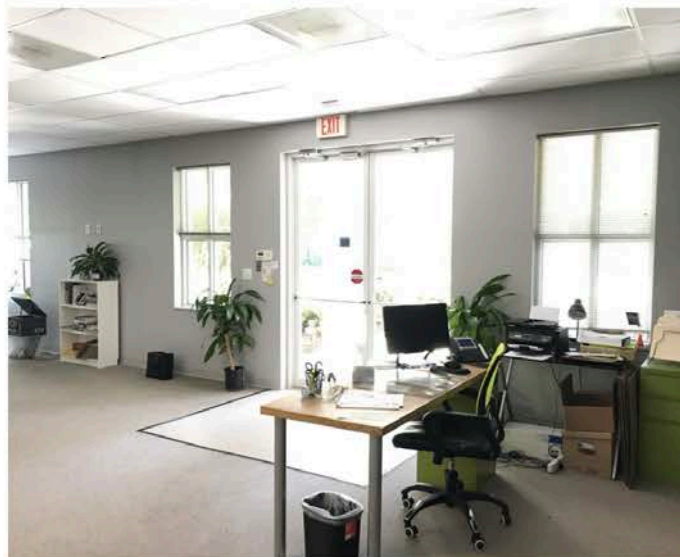
\*Furniture shown is suggested layout and is not included in rental.



\*Furniture shown is suggested layout and is not included in rental.

# PHOTOS

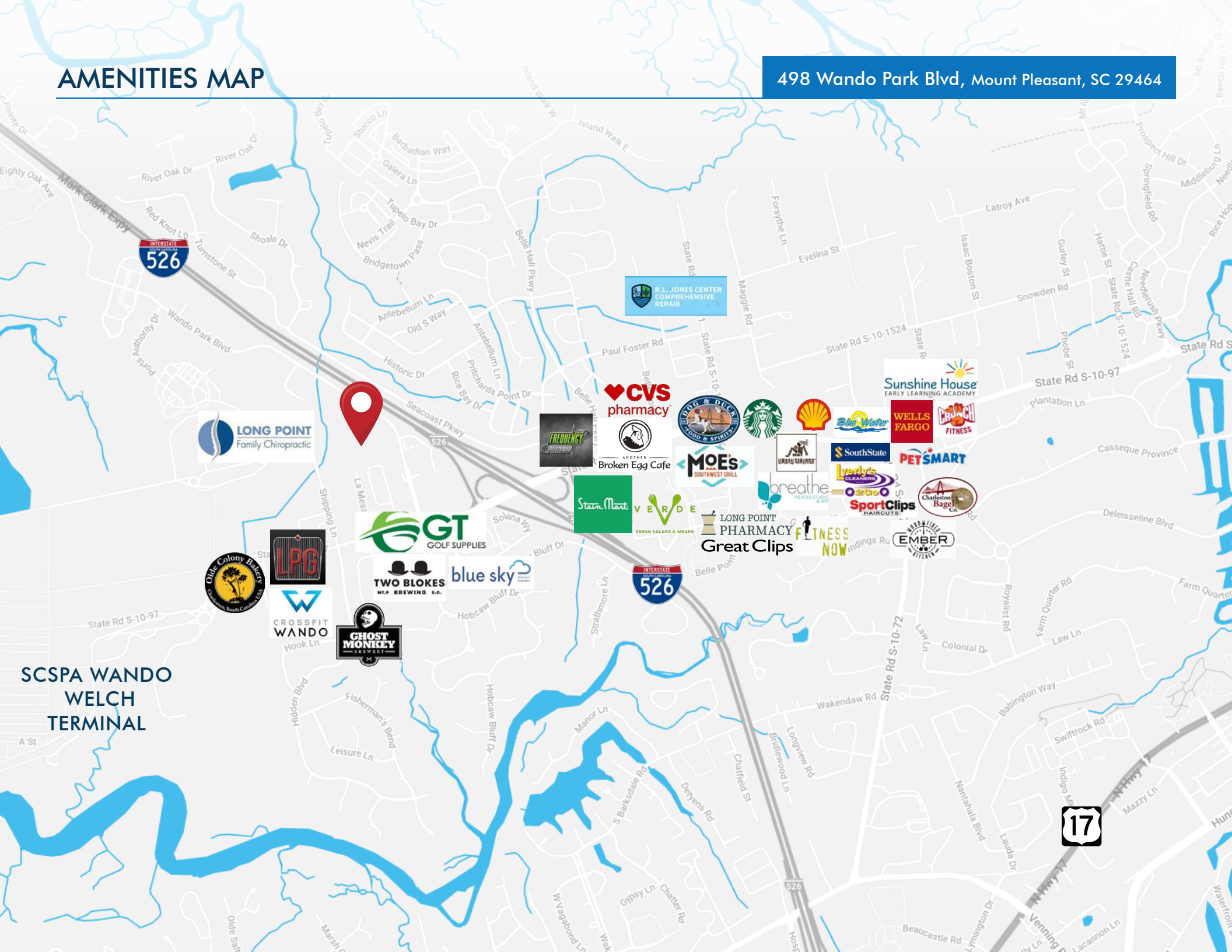
498 Wando Park Blvd, Mount Pleasant, SC 29464





# AMENITIES MAP

498 Wando Park Blvd, Mount Pleasant, SC 29464



**LONG POINT**  
Family Chiropractic

**Old Colony Bakery**  
Charleston, South Carolina, USA

**LPG**

**CROSSFIT WANDO**  
Hook Ln

**GHOST MONKEY BREWERY**

**GT**  
GOLF SUPPLIES

**TWO BLOKS**  
M.P. BREWING CO.

**blue sky**

**Stain Mart VERDE**  
FRESH SALADS & WRAPS

**IRONWORK FITNESS**

**CVS pharmacy**

**BROKEN EGG CAFE**

**MOE'S**  
SOUTHWEST GRILL

**LONG POINT PHARMACY**  
Great Clips

**DOG & DUCK**  
FOOD & SPIRITS

**Starbucks**

**Shell**

**Blue Water**

**WELLS FARGO**

**CRUNCH FITNESS**

**SouthState**

**PETSMART**

**lyerly's CLEANERS**

**SportClips**  
HAIRGUTS

**Charleston Baggie**

**breathe**  
PLATES, STICKS & SIPS

**FITNESS NOW**

**EMBER**  
BIBERIES

**R.L. JONES CENTER**  
COMPREHENSIVE REPAIR

SCSPA WANDO  
WELCH  
TERMINAL

17



## LEASING CONTACTS:

Jeremy N. Willits  
Senior Vice President  
843.270.9205  
jeremy.willits@  
harborcommercialpartners.com

Gerry Schauer, CCIM  
Partner  
843.364.2055  
gerry.schauer@  
harborcommercialpartners.com

Mac Wiseman  
Associate  
571.228.7881  
mac.wiseman@  
harborcommercialpartners.com

  
COMMERCIAL PARTNERS  
[harborcommercialpartners.com](http://harborcommercialpartners.com)