

# FOR SALE

2,945 SF FLEX BUILDING



5639 LEIDERMAN ST, NORTH CHARLESTON, SC 29406

5639 LEIDERMAN ST, NORTH CHARLESTON, SC 29406

## PROPERTY DESCRIPTION

This brand-new 2,945 SF flex building is for sale in North Charleston, currently under construction.

Situated less than a mile from I-26, this property will feature an attractive commercial storefront entrance, a large 12'x14' drive-in door, generous interior clearance, and off-site parking. The warehouse will be equipped with 400-amp single-phase service, LED warehouse lighting, and an 803 SF office buildout, including a reception area, two private offices, a break area, and an ADA-compliant restroom.

## OFFERING

SIZE	LIST PRICE	COMPLETION DATE
2,945 SF	\$950,000	Q3

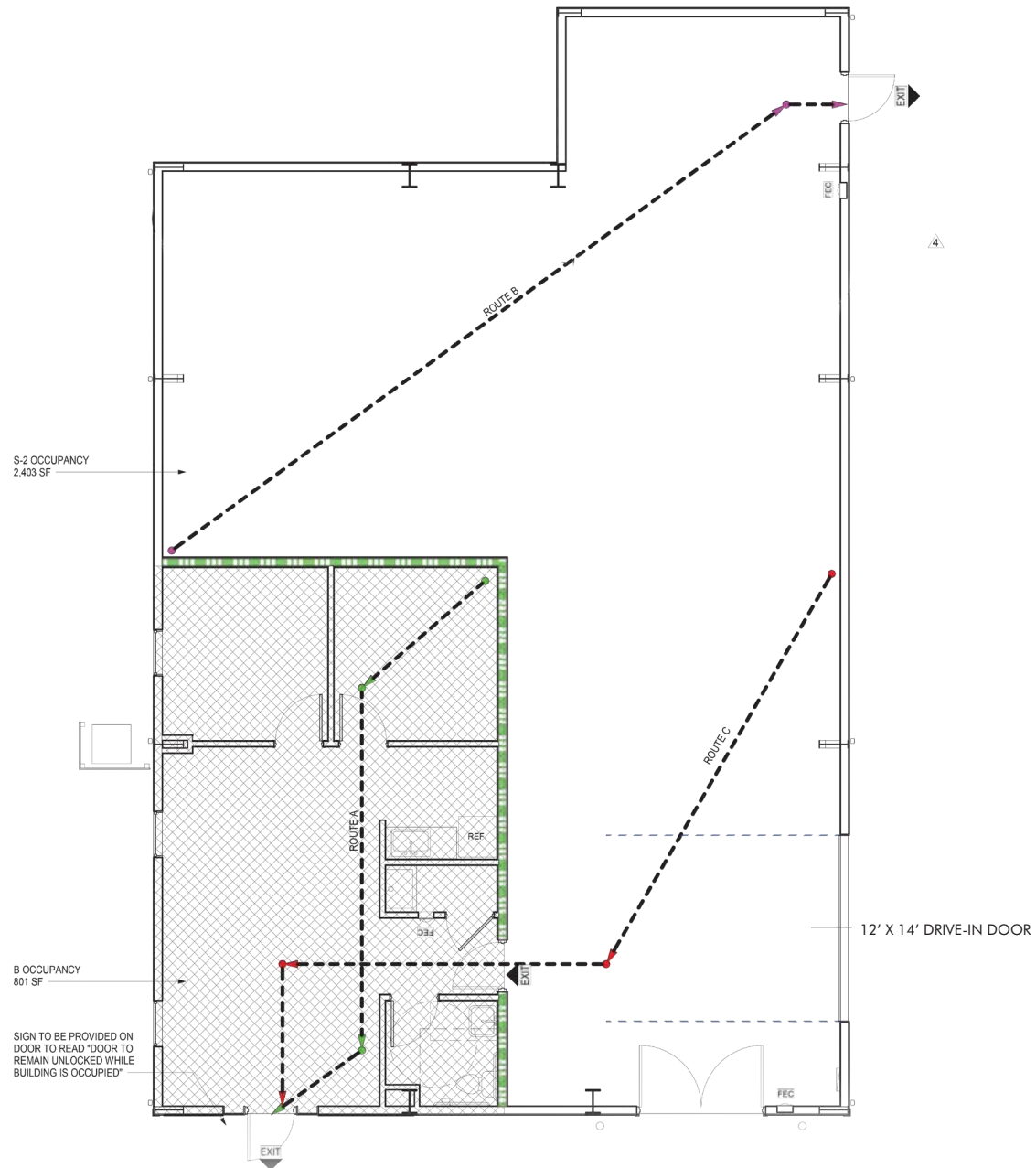
## PROPERTY SPECS

AVAILABLE SF	2,945 SF
PARCEL ID	473-13-00-174
COUNTY	CHARLESTON
OFFICES	803 SF
WAREHOUSE	2,142 SF
ZONING	B-2
EAVE HEIGHT	17'
CENTER HEIGHT	22'
COLUMNS	N/A
CONSTRUCTION	INSULATED METAL
SLAB	4"
DRIVE IN DOORS	1 (12' X 14')
BUILDING DIMENSIONS	44'10" X 71'6"
AUTO PARKING SPACES	4
POWER	400 AMP SINGLE PHASE
LIGHTING	LED

CONSTRUCTION UPDATE - JUNE 2026

5639 LEIDERMAN ST, NORTH CHARLESTON, SC 29406





**LOCATION**

**5639 LEIDERMAN ST, NORTH CHARLESTON, SC 29406**

**SUMMerville**

**GOOSE CREEK**

**HANAHAN**



**NORTH CHARLESTON**

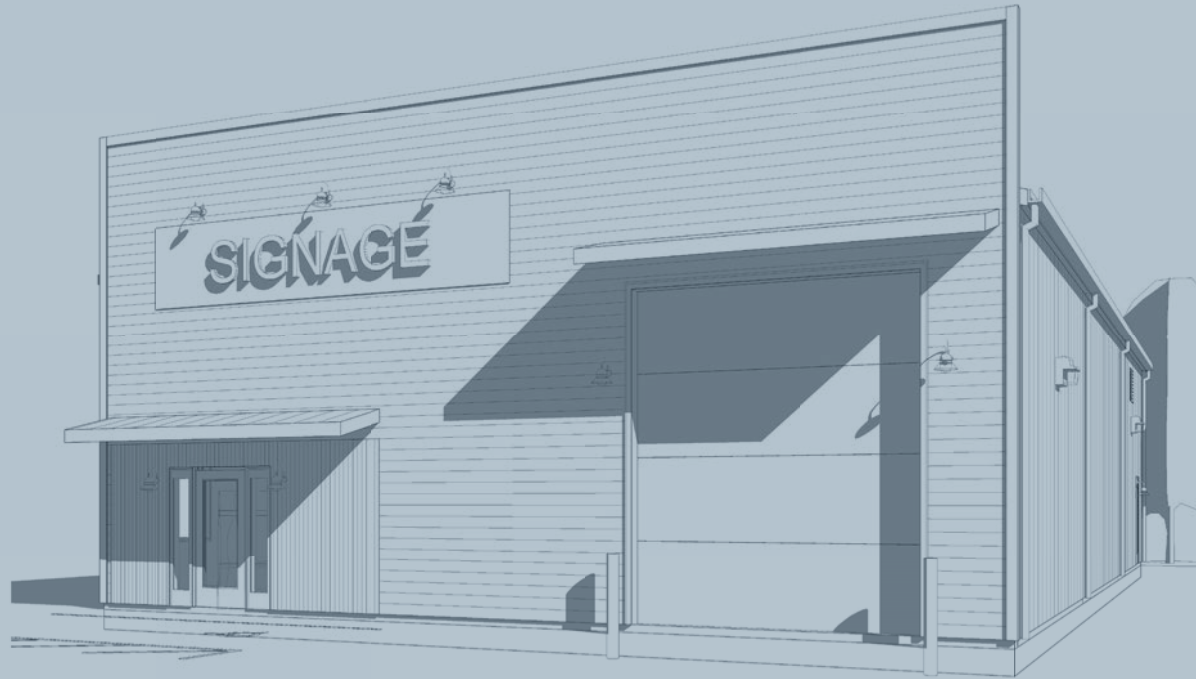
**WEST ASHLEY**

**CHARLESTON**

**MT PLEASANT**



**5639 LEIDERMAN ST  
NORTH CHARLESTON, SC 29406**



## CONTACTS:

**Todd Garrett, CCIM, SIOR**  
Managing Partner  
+1.843.408.8846  
todd.garrett@  
harborcommercialpartners.com

**Tradd Varner, SIOR**  
Partner  
+1.843.532.1684  
tradd.varner@  
harborcommercialpartners.com

**Crawford Riddle**  
Senior Associate  
+1.864.423.4973  
crawford.riddle@  
harborcommercialpartners.com

**Harbor**  
COMMERCIAL PARTNERS

harborcommercialpartners.com