

# FOR LEASE

4,120 SF WAREHOUSE



2300 CLEMENTS FERRY RD, WANDO, SC 29492

**Harbor**  
COMMERCIAL PARTNERS

2300 CLEMENTS FERRY RD, WANDO, SC 29492

## PROPERTY DESCRIPTION

Class A warehouse suite located on Clements Ferry Road. Just 2 miles from I-526. The unit consists of 4,120 SF of showroom/warehouse with plenty of natural light and a 10' x 10' dock high door, a loading dock in the rear, and 1 bathroom. Front showroom conditioned. Suite includes single phase power and additional parking in the rear. Estimated pass-throughs for taxes, insurance, and common area maintenance are \$3.72 PSF annually. Available August 1, 2026.

## THE OFFERING

SUITE	SIZE	LEASE RATE	NNN	AVAILABLE DATE
205	4,120 SF	\$17 PSF NNN	\$3.72 PSF	8/1/2026

## PROPERTY SPECS

TAX ID/APN	267-00-00-125
SPACE AVAILABLE	4,120 SF
COUNTY	Berkeley
ZONING	LI - Light Industrial
CLEARANCE HEIGHT	18-22'
DOCK HIGH DOORS	1 (10'x10')
PARKING	6 Spaces
HEATING/COOLING	Office Only
LIGHTING	LED
POWER	Single Phase
COLUMNS	Clear Span
GAS	At Street

SUITE 205



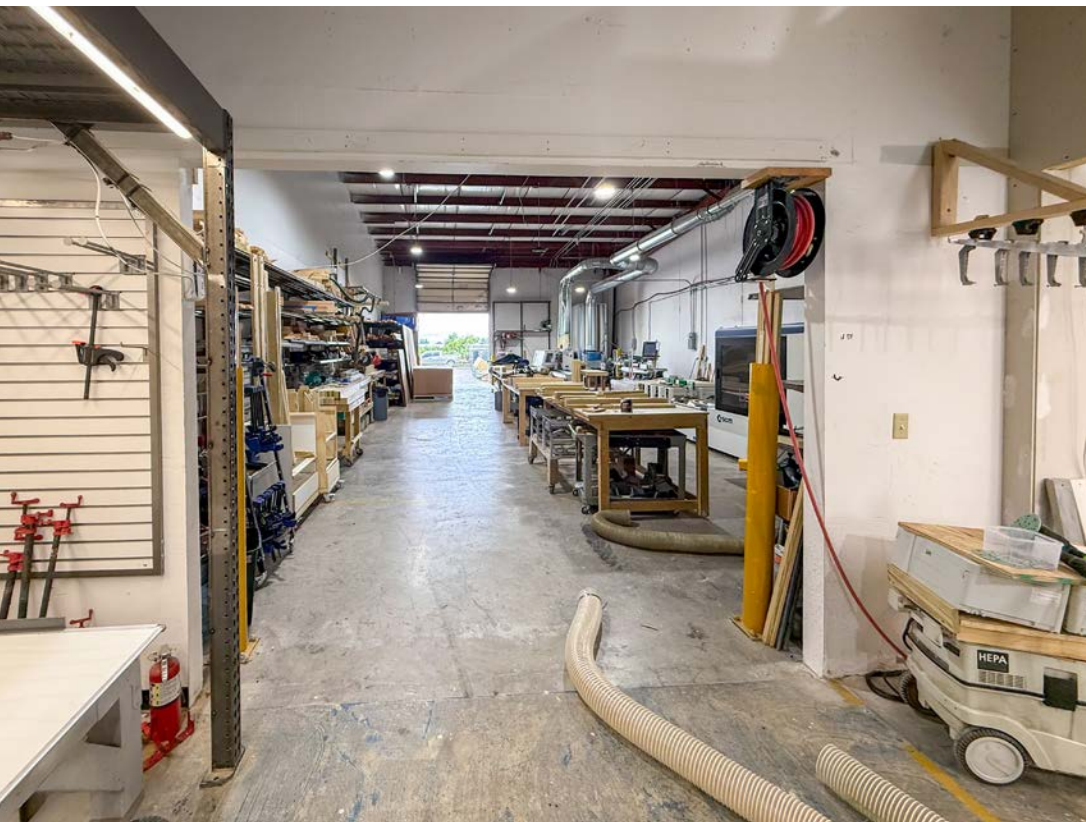
2300 CLEMENTS FERRY RD, WANDO, SC 29492



SUITE 205

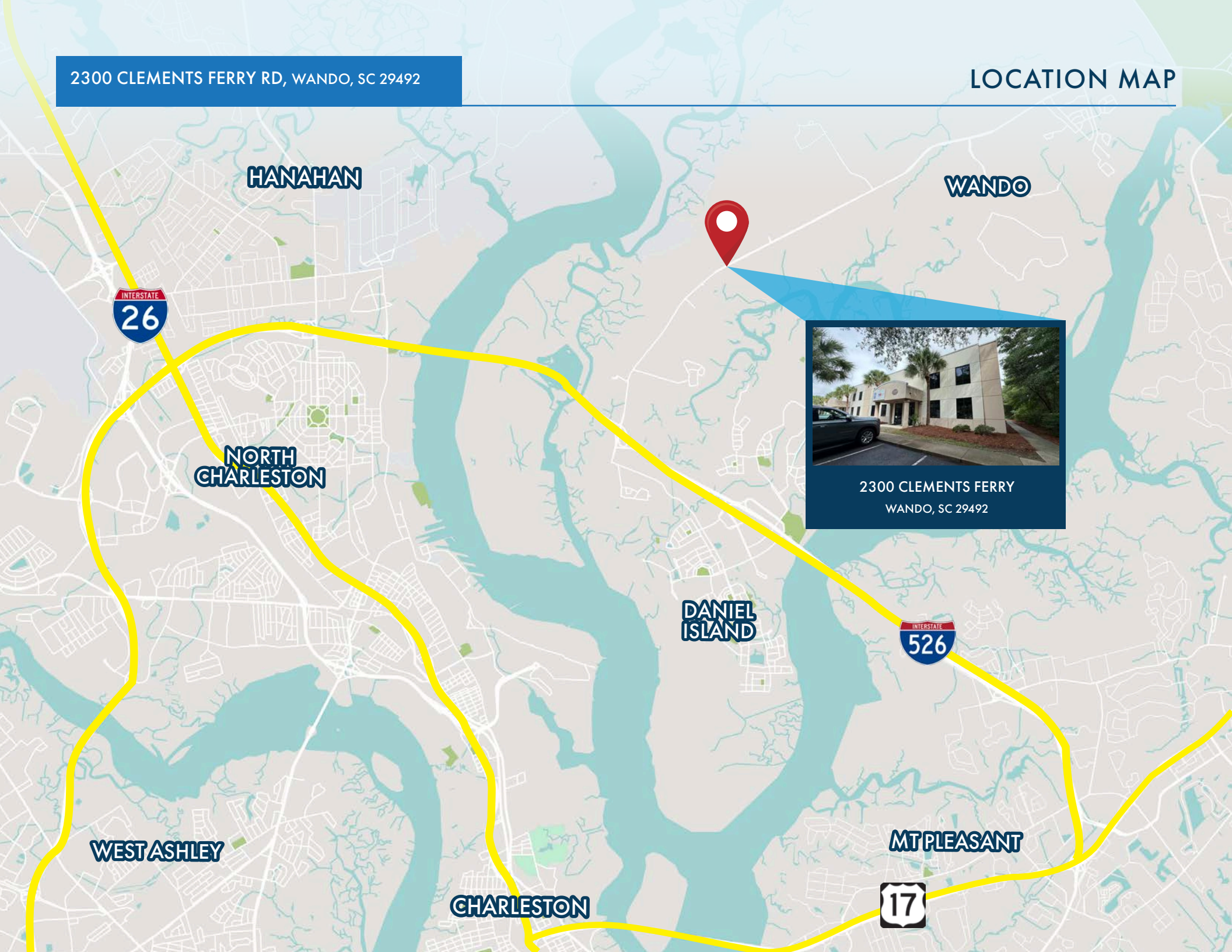


2300 CLEMENTS FERRY RD, WANDO, SC 29492



2300 CLEMENTS FERRY RD, WANDO, SC 29492

# LOCATION MAP



HANAHAN

WANDO



NORTH CHARLESTON



2300 CLEMENTS FERRY  
WANDO, SC 29492

DANIEL ISLAND



WEST ASHLEY

MT PLEASANT

CHARLESTON





## CONTACTS:

Crawford Riddle  
Senior Associate  
+1.864.423.4973  
crawford.riddle@  
harborcommercialpartners.com

Tradd Varner, SIOR  
Partner  
+1.843.532.1684  
tradd.varner@  
harborcommercialpartners.com

Todd Garrett, CCIM, SIOR  
Managing Partner  
+1.843.408.8846  
todd.garrett@  
harborcommercialpartners.com

  
COMMERCIAL PARTNERS

[harborcommercialpartners.com](http://harborcommercialpartners.com)