

FOR LEASE



NEW OFFICE/WAREHOUSE DEVELOPMENT

DEANNA LANE PROFESSIONAL CENTER

TRADD VARNER | 843-532-1684 | tradd.varner@harborcommercialpartners.com

TODD GARRETT | 843-408-8846 | todd.garrett@harborcommercialpartners.com

CRAWFORD RIDDLE | 864-423-4973 | crawford.riddle@harborcommercialpartners.com



DEANNA LANE PROFESSIONAL CENTER

OFFICE / WAREHOUSE FLEX SPACE



PROPERTY SPECIFICATIONS

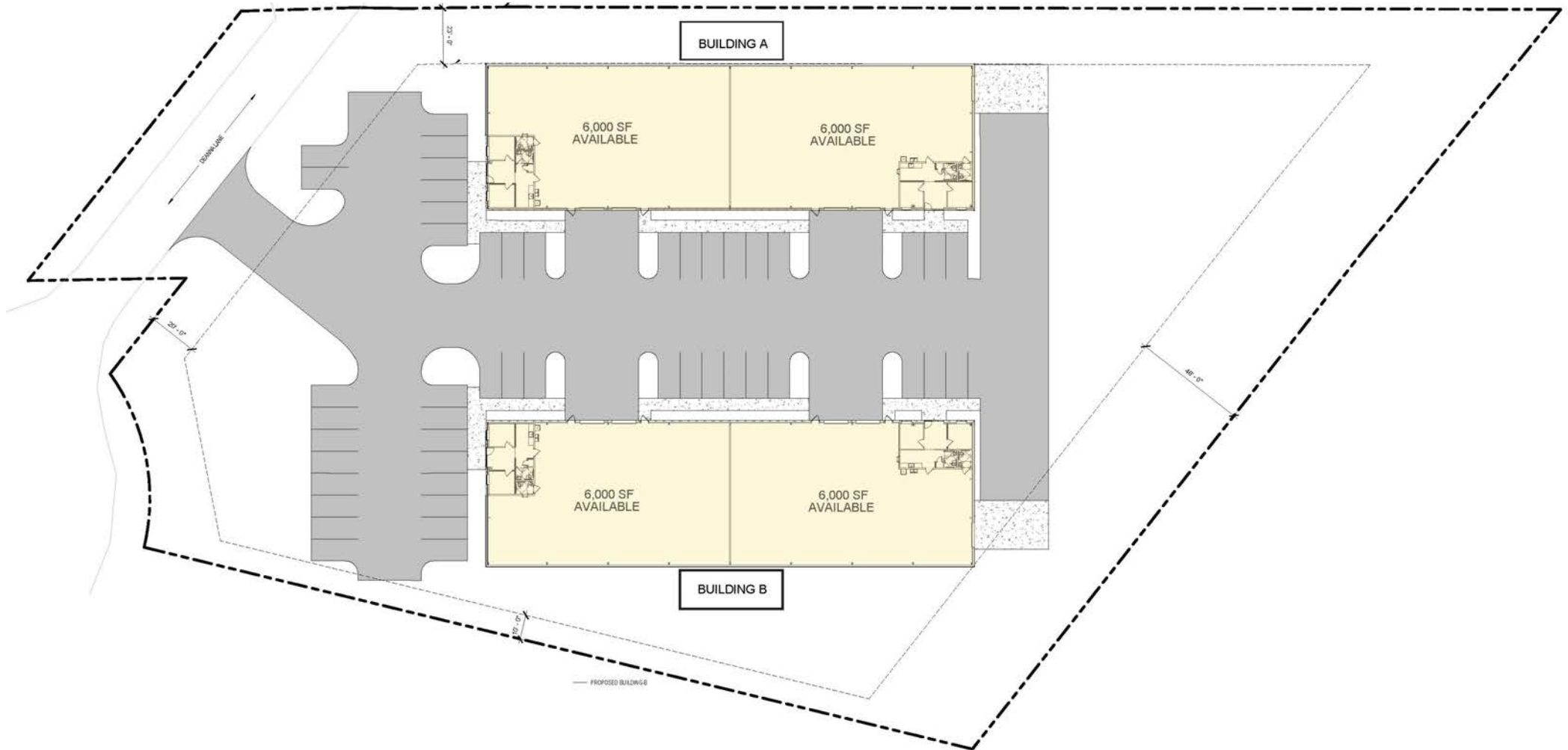
DEANNA LANE PROFESSIONAL CENTER



ADDRESS	286 Deanna Lane Charleston, SC 29492
TMS #	267-00-00-103
COUNTY	Berkeley County
ZONING	General Commercial
DELIVERY DATE	Q4 2026
TOTAL SQUARE FOOTAGE	24,000 SF (Each Building is 12,000 SF)
UNIT SIZE	6,000 SF
OFFICE SF	600 SF/Unit or To Suit
RESTROOMS	Two per Unit or To Suit
DRIVE-IN DOORS	(2) 12'x12' per Unit (4 per building)
DOCK HIGH LOADING	1 Dock Well per Building
EAVE HEIGHT	20'
PARKING	48 Spaces
LEASE RATE	Contact Broker

FLOOR PLANS

DEANNA LANE PROFESSIONAL CENTER | 6,000 SF - 12,000 SF

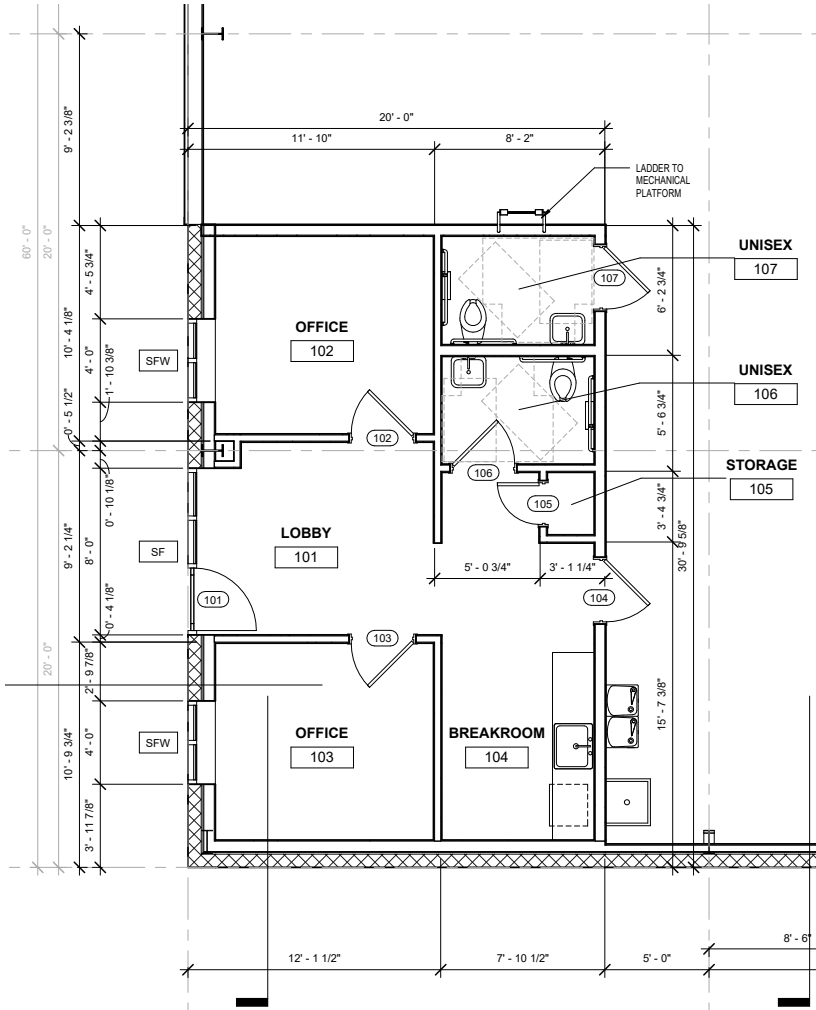


- 6,000 OR 12,000 SF SUITE OPTIONS
- TURN-KEY OFFICE BUILD OUT AVAILABLE

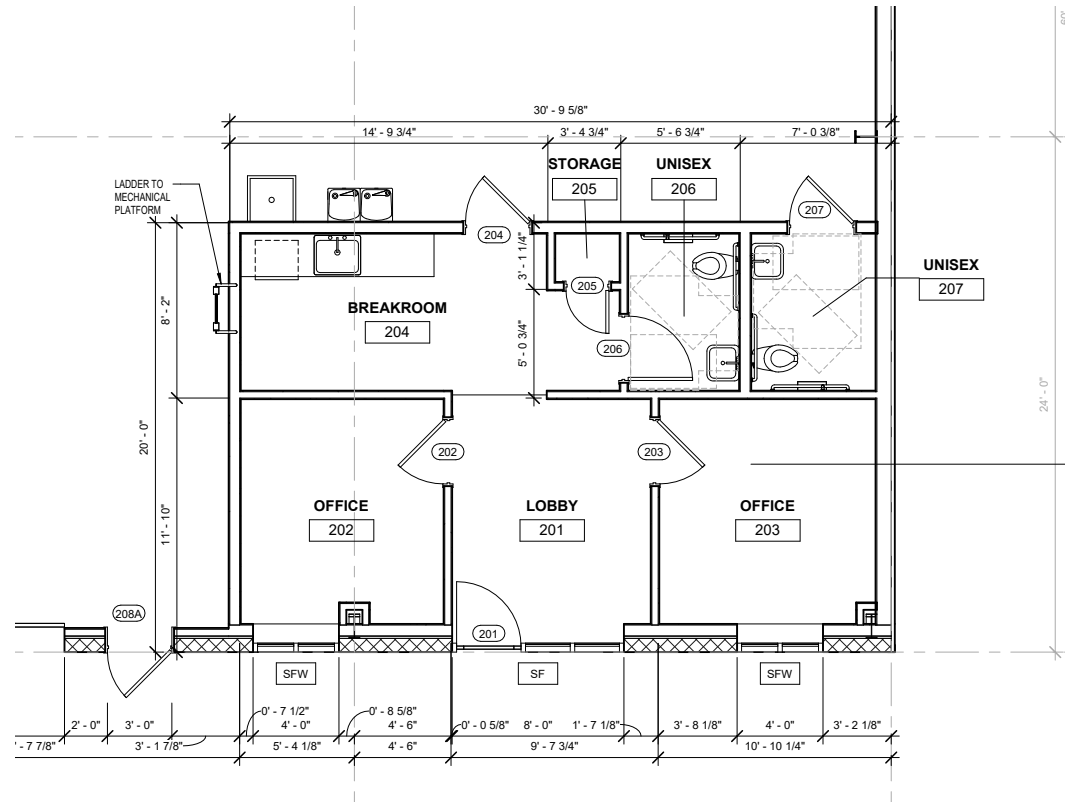
SPEC OFFICE PLANS

DEANNA LANE PROFESSIONAL CENTER

STREET FACING UNITS

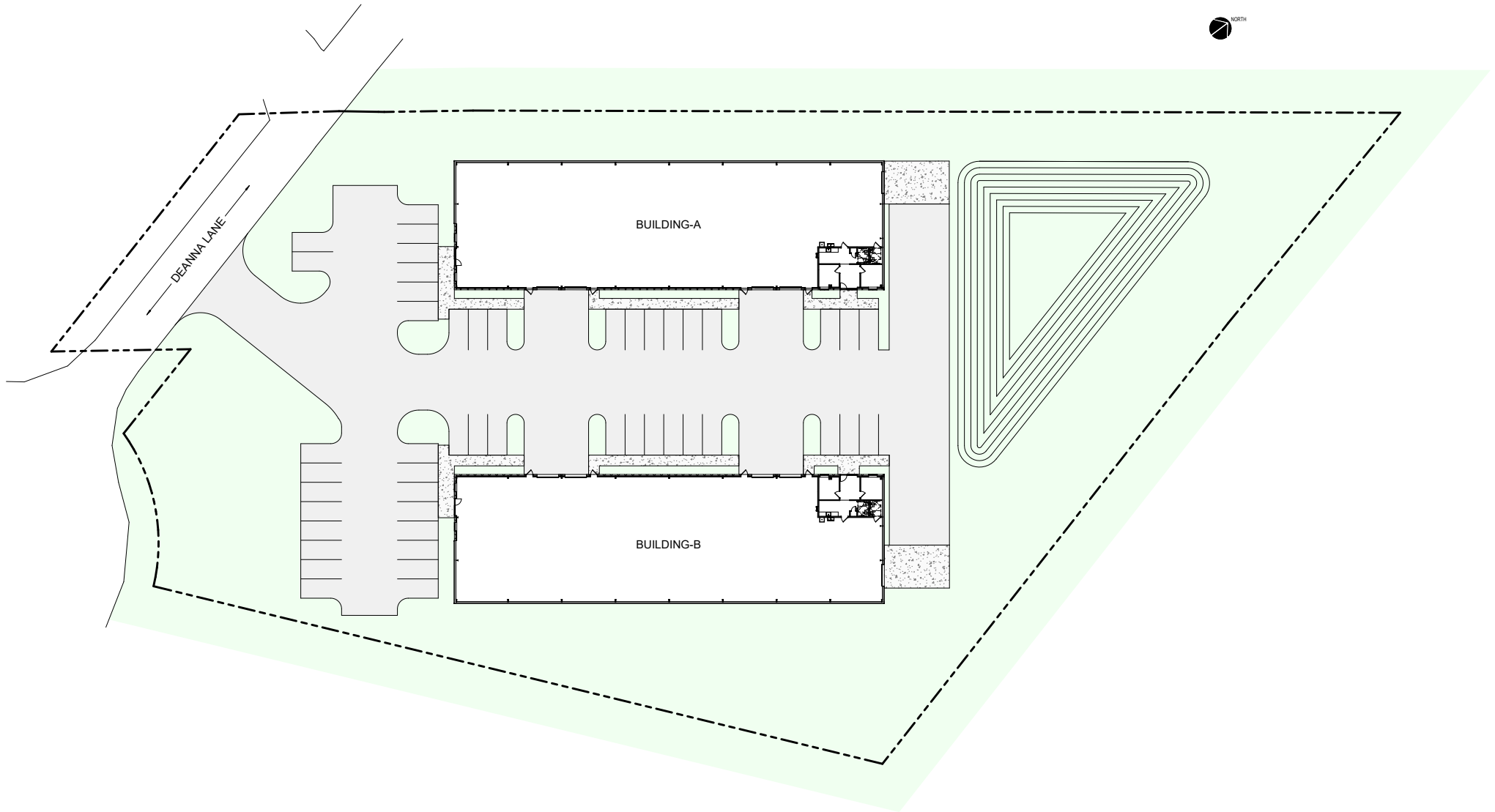


INTERIOR UNITS



SITE PLAN

DEANNA LANE PROFESSIONAL CENTER | 24,000 SF



AMENITIES MAP

DEANNA LANE PROFESSIONAL CENTER



DEANNA LANE PROFESSIONAL CENTER

OFFICE / WAREHOUSE FLEX SPACE



FOR MORE INFORMATION:

TRADD VARNER | 843-532-1684 | tradd.varner@harborcommercialpartners.com

TODD GARRETT | 843-408-8846 | todd.garrett@harborcommercialpartners.com

CRAWFORD RIDDLE | 864-423-4973 | crawford.riddle@harborcommercialpartners.com

