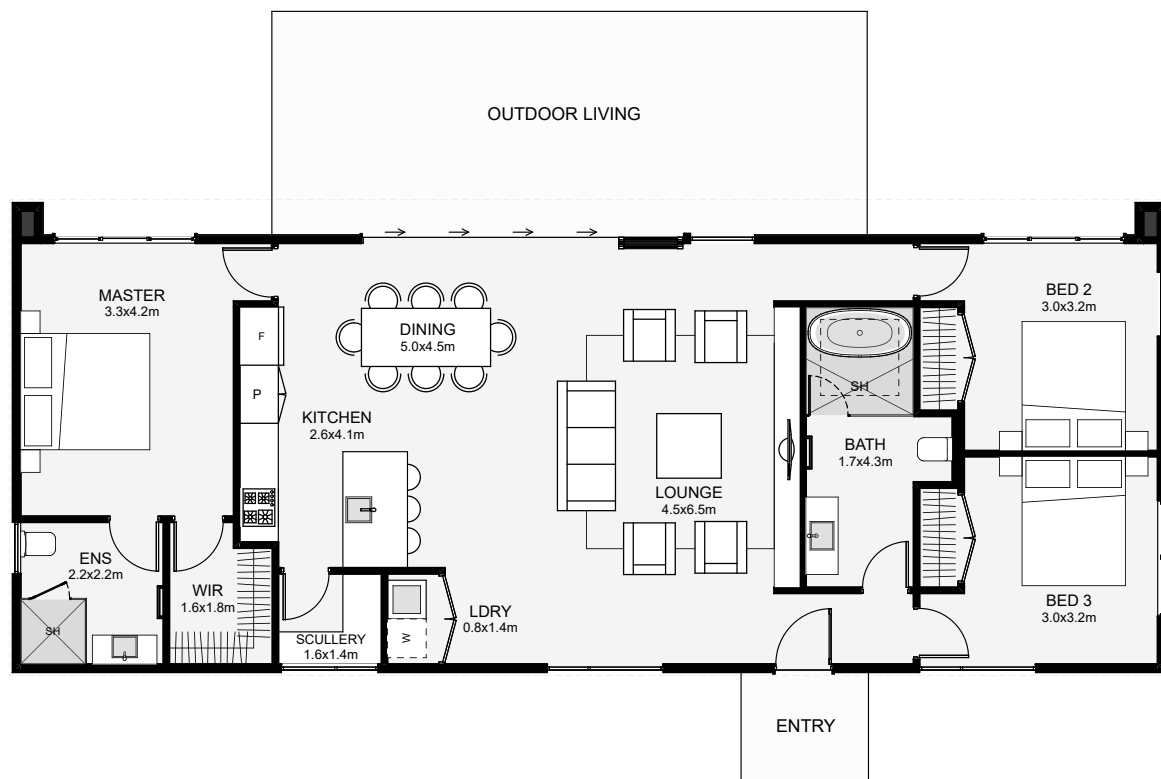




This simple transportable home has a versatile, open plan layout with three bedrooms, a separate master, ensuite, scullery and open plan living positioned centre to maximise views outside. Two end wing walls frame the home, shelter for the two end bedroom windows and help complete the roof overhang. Want to include a garage? This plan integrates easily through the entry or scullery. If simple and highly functional are two things you're looking for in a transportable home, this one has your name on it!



Floor Area: 120m²

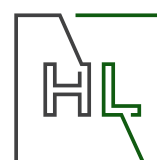
0
 3
 2
 1
 17.8m
 7.2m

Contact us:

Ph: 0272715455

E: info@hlhomes.co.nz

www.hlhomes.co.nz



HOMES
& PROPERTY SUBDIVISION