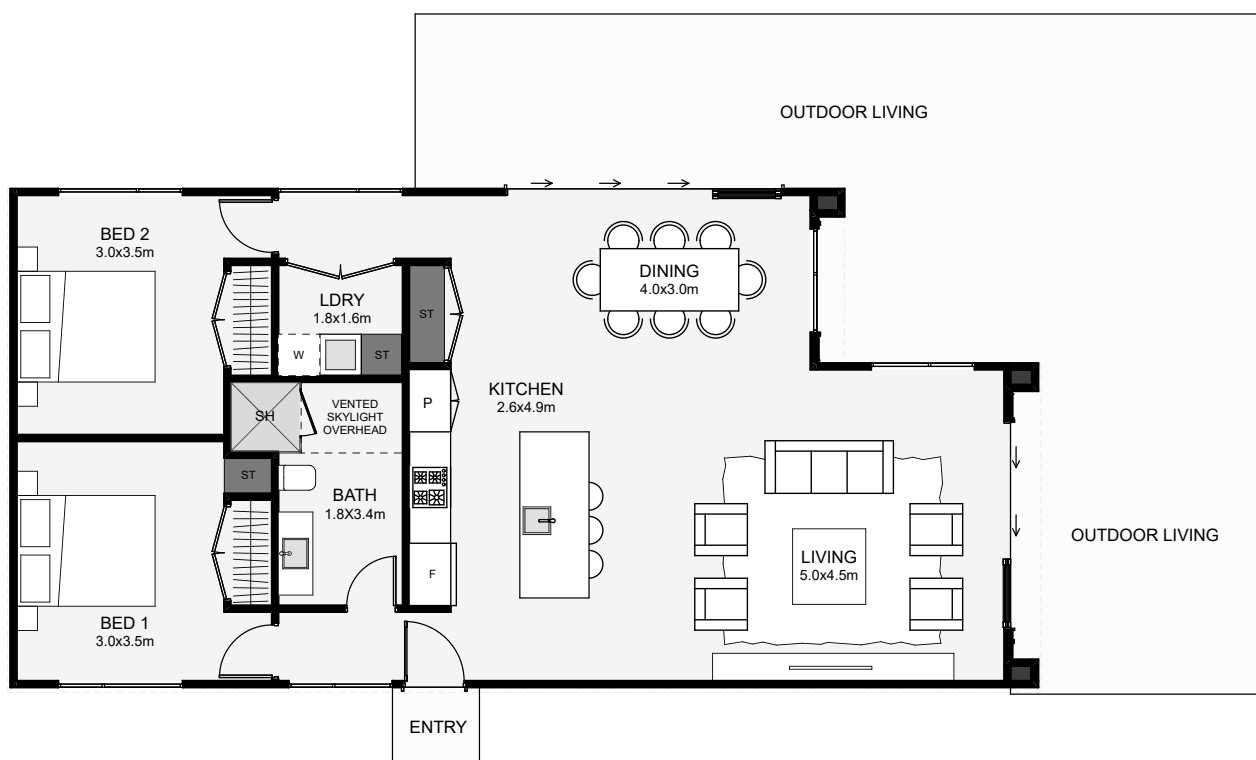




Wrapped in low-maintenance, metal powder coat cladding and finished with a dose of timber board and batten, this home will impress! With two bedrooms, an internal bathroom, an overhead, vented skylight, good storage and a fun layout, there's a lot to love! If you appreciate architectural detail and your needing only two bedrooms, this transportable home may just be your best choice!



Floor Area: 98m<sup>2</sup>

0   
 2   
 1   
 1   
 14.9m   
 7.2m

Contact us:

Ph: 0272715455

E: [info@hlhomes.co.nz](mailto:info@hlhomes.co.nz)

[www.hlhomes.co.nz](http://www.hlhomes.co.nz)



**HOMES**  
& PROPERTY SUBDIVISION