

Photogrammetry Provisional Design Day of Surgery

HYBRIDGE
LABORATORY

PRESURGICAL

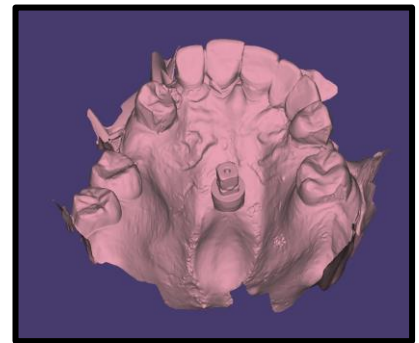
1. Place fiducial markers or TAD's

- ☐ Upper: in the palate
 - ☐ Lower: on the lingual portion of the retromolar pad
- OR
- ☐ Use Yomi link – refer to planning for placement



2. Take Intraoral Scans of both arches and bite with fiducial markers or TAD's in place

- ☐ Begin your scan at the distal of the first molar and scan the entire ridge, capturing all surfaces
- ☐ It's important to get a crisp scan of the entire palate and fiducial markers

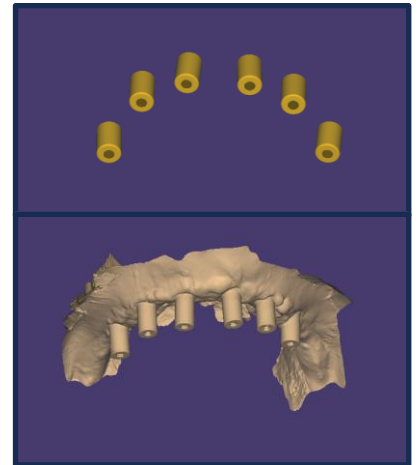


SCAN

DURING SURGERY – AFTER SUTURING

3. Place scan flags and perform Photogrammetry capture (STL & coordinate output in .csv format)

- ☐ Remove scan flags & place healing caps
- ☐ Take IOS scans of the tissue and the ridge with the healing caps in place – include the fiducial markers



SCAN

UPLOAD FILES TO Hybridgerx.com

1. Complete a new Rx and add it to the patient's folder along with the IOS files
2. Zip the patient's folder
3. Find your patient's current case (or create a new one if needed) & upload the zipped folder through the Portal

