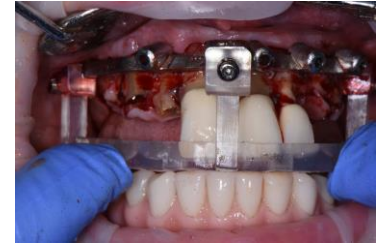


Dentate eXact Guided Surgery Checklist

1. Extract teeth noted on the Surgical Report as “pre-extractions”.
2. Flap gingival tissue.
3. Seat Positioning Guide over teeth with eXact Platform attached. Ensure the Guide is fully seated on the teeth. Check that the eXact Platform is intimate with the facial bone.



4. Using the Hybridge eXact Bone Screw and Drill Kit, drill the screw osteotomies, placing each screw before moving on to the next one.
5. Remove Positioning Guide.



6. Extract remaining teeth and reduce bone to the level of the eXact Platform. It can be helpful to suture back the palatal tissue.
7. If implants are all at the same level, place Verification Wafer onto eXact Platform to ensure bone has been adequately reduced.
8. Remove Verification Wafer.



9. Place the Osteotomy Guide onto the eXact Platform and secure with the Lock Pin.
10. Using the guided drill system and sequence noted on the surgical report, create the implant osteotomies.
11. Place the implants through the Osteotomy Guide.
12. Remove the Osteotomy Guide.
13. If using MUAs, screw them in place.
14. Put the Verification Wafer onto the eXact Platform and secure with the Lock Pin. If the Verification Wafer doesn't seat over the MUAs, enlarge the holes as needed.



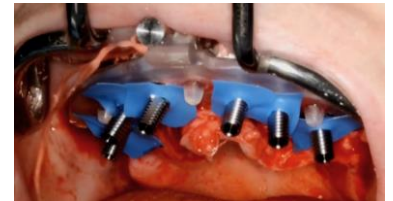
Dentate eXact Guided Surgery Checklist

15. Relieve the access holes in the Immediate Provisional if necessary to prevent interference with the temporary cylinders.



16. Secure the Verification Wafer to the eXact Platform using the Lock Pin.

17. Place the rubber gaskets and the temporary cylinders.



18. Clean and dry the Provisional.

19. Apply monomer to the acrylic surfaces of the Provisional and the temporary cylinders with a small brush or cotton tip, to maximize the chemical adhesion of the injectable Stellar Acrylic.



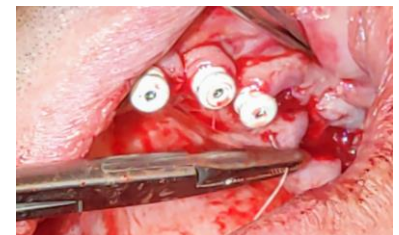
20. Seat the Provisional over the temporary cylinders and place plugs in the screw access holes.

21. Inject Stellar acrylic in all of the facial vent holes or screw access holes. Light cure for 60 seconds.



22. Remove the Provisional and suture to completion.

* Have an assistant follow the steps on the next page to prepare the Provisional for delivery.



23. After Provisional has been adjusted and polished, deliver the Provisional to the mouth.

24. Check occlusion and ensure the posteriors are out of occlusion.

25. Place a sponge pellet into each screw channel. Then inject a quick setting light body impression material to seal each screw channel.

26. Remind patient to only eat foods that can be cut with a plastic spoon.



Finalizing the Immediate Provisional Checklist

Assistant To Do While Doctor Sutures

Preparation

1. Clean Provisional and ensure it is completely dry.
2. Screw analogs onto each temporary cylinder ensuring they are seated properly. Do not over-tighten.
3. Place plastic plugs into each screw channel, pushing them in so they are secure.
4. Prepare all surfaces with monomer to ensure a good chemical bond.
5. Starting with the occlusal, fill all access holes with Stellar acrylic & light cure. Once set, flip to the intaglio and fill all holes and voids, including the indexing holes and facial injection holes. Light cure.
6. Mark where you are going to reduce cantilevers and remove plugs.



Finishing

1. Using a diamond disc, remove cantilevers.
2. Using a large carbide cutter, contour the occlusal, lingual, and facial surfaces for a smooth, rounded transition on the intaglio. Tissue surface must be convex with no concavities.
 - ☐ Reduce thickness of lingual wall
 - ☐ Create a tapered and rounded transition on both the facial & lingual toward intaglio
 - ☐ Smooth any contours where acrylic was added
 - ☐ Using a long, thin carbide, relieve between each analog to create a cleaning embrasure
 - ☐ Using an inverted cone carbide with a flat end, remove 1-2 mm of acrylic around each analog as needed to expose metal collars
3. Remove analogs & screws and put somewhere safe.
4. Continue to refine exposing of the collars using a flat-ended inverted cone carbide.
5. Using a long, tapered bur, widen the occlusal screw access holes, tapering toward the screw.



Finalizing the Immediate Provisional Checklist

Assistant To Do While Doctor Sutures

Polishing

1. Use a soft, wet rag wheel with pumice to smooth all pink surfaces, especially lingual and between implants.
 - ☐ Make sure wheel is wet
 - ☐ Use a low setting
 - ☐ Focus on where tongue meets provisional
 - ☐ Smooth all irregularities
2. Rinse, dry well and inspect. Continue with pumice until smooth.
3. Using a dry, soft rag wheel and acrylic polish, high shine teeth and pink tissue.
4. Scrub Provisional under running water with soap and a toothbrush.
5. Dry and inspect.
6. Disinfect screws and Provisional.
7. Place screws with driver.
8. Deliver finished Provisional.

