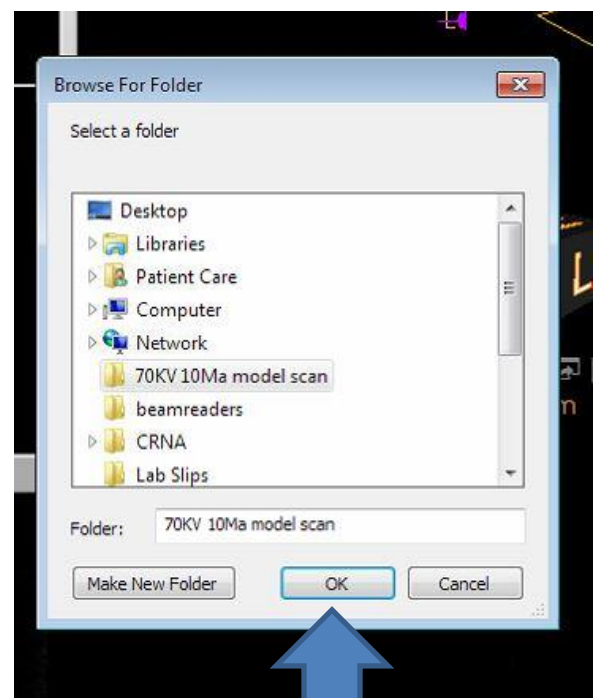
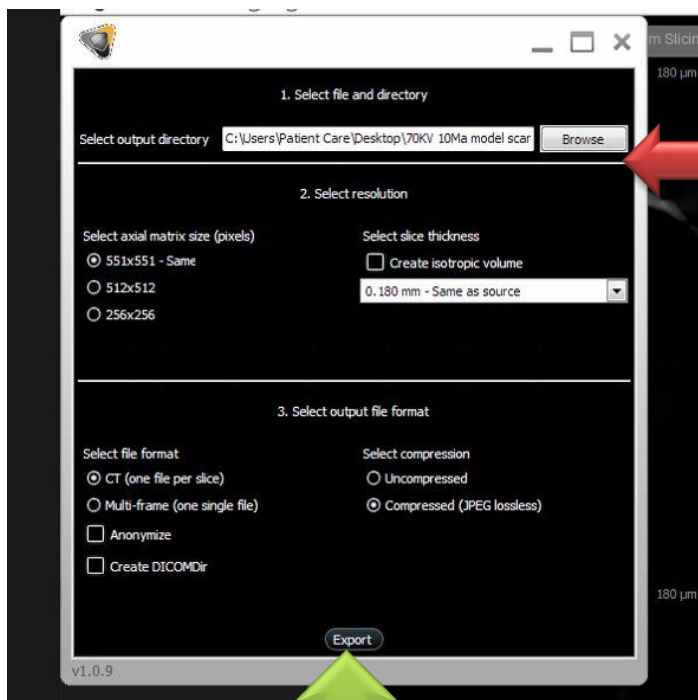


How to Export from your Carestream to Hybridge

In the CT viewing software click on the export CT button in the bottom left menu.

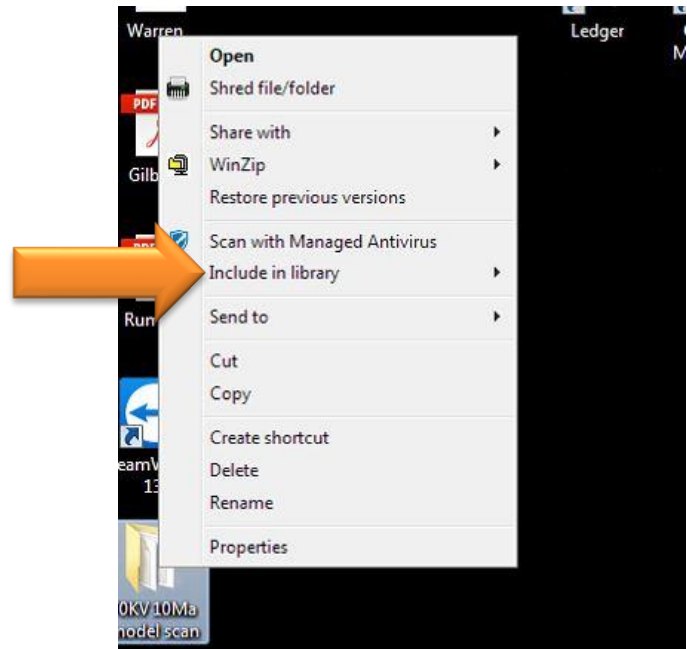


When you click on the button, a window will appear that asks you where to export. Click on browse and create a new folder on the desktop with the patient name IN THE MOUTH or OUT OF THE MOUTH. Then click OK.



Now Hit the EXPORT BUTTON. Once it exports you can go to the desktop.

Once the folder is created on the desktop you can right click and compress it to a zipped folder.



Now you can upload this to the Hybridge portal, hybridgerx.com