

Long-Term Fixed Provisional Intra-oral Cementation Checklist – PMMA Prototype

1. Set up

- ☐ Snip the tips of 6 micro brushes
- ☐ Place 1 shoe (wide side 1st) onto each micro brush handle (*Hint: Wear gloves while handling shoes*)

What you'll need:

- Bond LC 10ml
 - anaxdentUSA.com/anaxgum
 - SKU: 20400006
- MultiLink Automix (8 min set time)
 - Ivoclar.com
 - SKU: 615218WW
- Monobond Plus (1 min set time)
 - Ivoclar.com
 - SKU:62621AN
- Implant Driver
- Tweezers
- Fixation Screws
- Brush & Micro Brushes
- Vaseline
- Alcohol



**Use ONLY on PMMA
Provisional**



Pro Tip **Test Fit Shoes** – Screw shoe to an analog or slide a shoe onto a micro brush handle. Insert shoe into each housing on the Provisional to ensure it seats completely and passively.



2. Prep Provisional (PMMA) & Shoes

- ☐ Apply a thin coat of **Bond LC** (*used only on Provisional*) inside each housing ***Light cure each for 60 seconds***
- ☐ Apply Monobond Plus to the outside surface of each shoe ***Set for 60 seconds***

3. Cement Shoes to Prosthesis – **Timer Needed**

- ☐ Express a small amount of **MultiLink Automix** cement from the mixing tip onto a gauze pad
- ☐ Start a running timer from zero, begin now
- ☐ Working on one microbrush/shoe combo at a time, use the MultiLink syringe to apply cement evenly around the outer walls of each shoe

ensure no cement gets into the shoes

- ☐ Insert the shoe into the housing, ensuring it is fully seated (cement will ooze out around the collar)
- ☐ Repeat for each shoe until all are inserted into the provisional
- ☐ Remove excess cement with a micro brush
- ☐ Using tweezers, from the occlusal side, insert a screw into each screw channel (tap gently to ensure the screw drops into the hole)



*****Do Not push the screw- this could dislodge the shoe*****

4. Insert the Provisional into the mouth (timer near 5:00 mins)

- ☐ Seat the Provisional onto the implant interfaces or MUA's
- ☐ Hold in place with fingers on the canines & incisal edge.
- ☐ Tighten screws in a crisscross pattern with 0.5 Hex driver
- ☐ Hold prosthesis in place until minute 13:00 on the timer
- ☐ Release your hold & have patient remain open until timer is at the 18:00 minute mark



5. Final Adjustments

- ☐ Check occlusion by having patient close gently onto articulating paper.
- ☐ Adjust as necessary. Ensure even contacts around the arch, with light occlusion on cantilevers



6. Hygiene Review

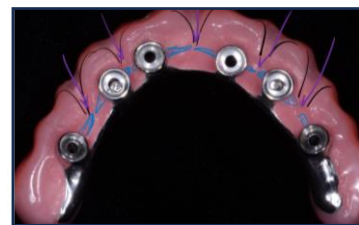
- ☐ Discuss proper hygiene
- ☐ Test embrasures/cleansing grooves and ensure accessibility

Scan QR code for Hygiene documents



7. Final Adjustments as Needed

- ☐ If necessary, remove the Provisional to relieve tissue pressure & open embrasures
- ☐ Pumice & polish to a high shine



8. Deliver the Long-Term Provisional PMMA

- ☐ Reinsert Provisional & screws (finger tighten – approx. 10 Ncm)
- ☐ Place a small sponge pellet into each screw channel to protect screwhead
- ☐ Cover screw access holes with a temporary composite such as Telio

