

Edentulous eXact Initial Records Checklist

1. Intra-Oral Scans

- ☐ Intra-oral scans of the occlusal and facial surface of the teeth – upper and lower jaws
- ☐ Intra-oral scans of the bite from both sides of the arch



2. Photo Series



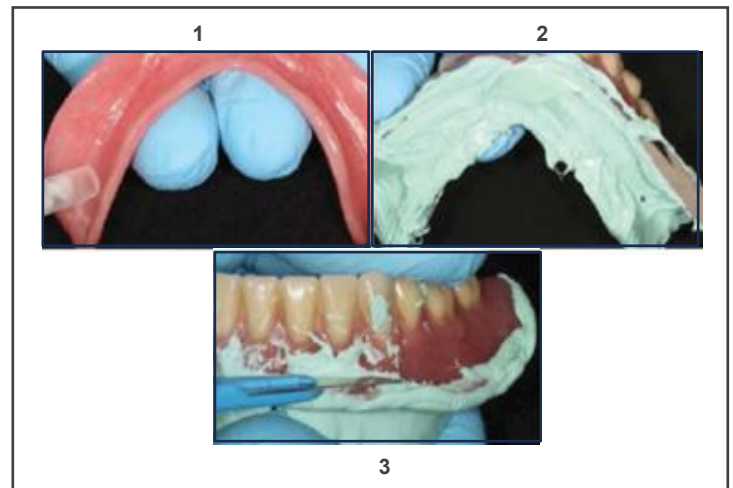
3. Green Mousse Protocol for CBCT Scans

This will be completed using either the patient's denture, if teeth are in the right position, or using the Blondie setup, if a try-in was required

- ☐ Rinse patient's existing denture
- ☐ Inject **Green-Mousse** into denture or set-up and spread evenly on intaglio surface
- ☐ Fit & trim relined denture in patient's mouth



Use **Green-Mousse** only
for this technique.
(blue is not radio opaque)



Do



The Green-Mousse acts like a reline/wash impression, to capture the tissue details of the entire intaglio surface. Accuracy will result in a precisely fitting **Surgical Guide**.

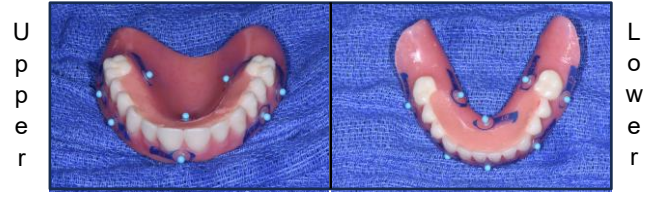
Don't



4. Place Stickers

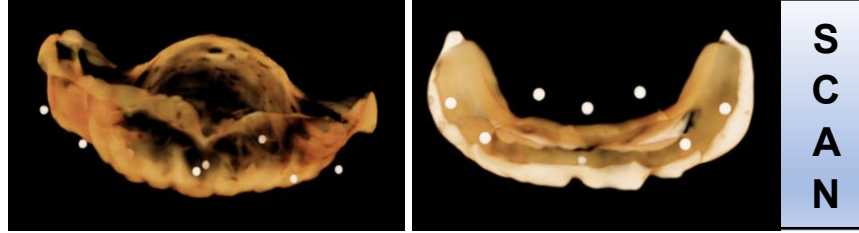
- ☐ Remove and completely dry the denture or try-in, then place radiographic scan markers

** 5 on the facial and 3 on the lingual **



5. Out of the Mouth CBCT Scan

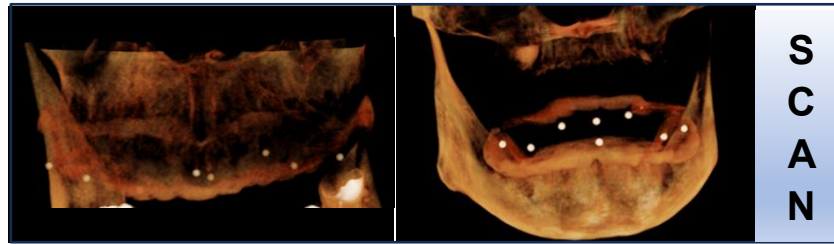
- ☐ Using patient's green mousse relined denture or Blondie Try-in with radiographic markers, take a CBCT scan of the denture out of the mouth
- ☐ Place denture on a foam block, on the CT platform with the teeth in the same orientation as they are in the mouth



** Upper teeth facing down, Lower teeth facing up*

6. In the Mouth CBCT Scan

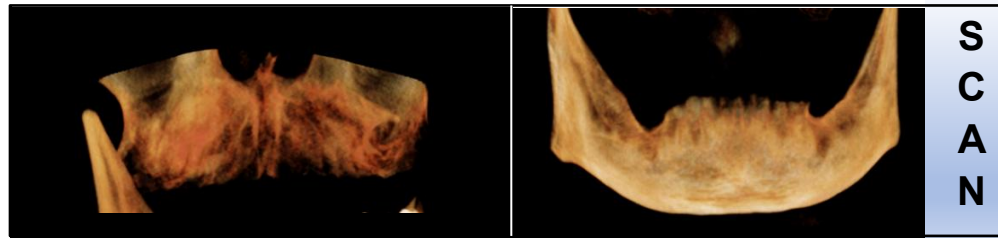
- ☐ CBCT with the green mousse lined denture in the mouth



** To separate the arches, have the patient gently bite on cotton rolls.*

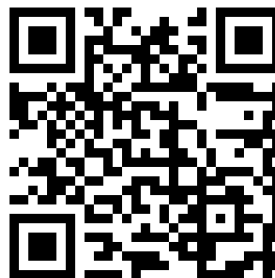
7. CBCT with **Nothing in the Mouth**

** To separate the arches, have the patient gently bite on cotton rolls*



5. Create a Case in the Lab Portal

- ☐ Visit HybridgeRx.com to access the portal
- ☐ Create your Smile Analysis or use the Hybridge Smile Design App
- ☐ **Zip ALL** of your files
- ☐ Upload your Rx, photos and all zipped files



Click the QR code for a video tutorial

VERTICAL DIMENSION
APPROVED _____
OPEN _____
CLOSE 2mm at PW
IF VERTICAL CHANGES, AT EXPENSE OF THE
UPPER / LOWER / BOTH
OVERJET
APPROPRIATE _____
CHANGE _____

NOTES
Diagram capture of Pts old dentures
Redesign as indicated and close PW as needed
to get Anterior Contacts

© Copyright 2014 - 2020 Hybridge, LLC. REV20052