



MOBILE MORGUE EXPANSION TRAILER

(53ft Configurations)

OPERATOR MANUAL & STORAGE INSTRUCTIONS

THIS MANUAL IS APPLICABLE FOR MODEL MMET-53 UNIT ONLY

Paladin - A Division of Acela, Inc
80 Shire Trail
Bozeman, MT 59718 USA
www.paladinprepare.com
+1 (406) 924-3535
CAGE: 7WC08

COPYRIGHT

This manual is protected under copyright, 2020 by Paladin - A Division of Acela, Inc. and may not be duplicated, in whole or in part, without the expressed written permission of Paladin. All rights reserved.

This manual is printed in the United States of America.

Acela, Inc. products are proudly made in the USA.



HIGH VOLTAGE! WARNING - Your Disaster Portable Morgue Unit utilizes high voltage power to operate. *THE REFRIGERATION UNIT COVERS SHOULD BE CLOSED AND LATCHED AT ALL TIMES UNLESS REQUIRED TO PERFORM MAINTENANCE BY CERTIFIED TECHNICIAN. THE REFRIGERATION UNIT CONTAINS HIGH VOLTAGE. IMPROPER USE OR ACCESS CAN CAUSE ELECTRICUTION. MAINTENANCE SHOULD ONLY BE PERFORMED BY A CERTIFIED TECHNICIAN!*

Table of Contents

1.0 Introduction & Configuration Options

- 1.1 Overview of Configurations
 - 1.1.1 Threshold Configurations
 - 1.1.2 Ramp Configurations
 - 1.1.3 Solar Charger Option
- 1.2 Overview of Operations and Unit Design

2.0 Quick Start Guide

3.0 MMET-53 Basic Operation

- 3.1 Refrigeration Unit Operation
- 3.2 Lighting
- 3.3 Solar Panel Battery Charger (if equipped)
- 3.4 Trailer Doors
- 3.5 Loose Inventory
- 3.6 Maintenance
- 3.7 Stowing Equipment (when not in use)

4.0 Assembly & Disassembly Instructions

- 4.1 Preassembled Ramp Assembly Instructions
- 4.2 Rollable Ramp Assembly Instructions
- 4.3 Rollable Ramp Disassembly Instructions
- 4.4 Scaffold Assembly Instructions

5.0 Miscellaneous Items

- 5.1 Long Term Storage
- 5.2 Towing
- 5.3 Troubleshooting
- 5.4 Supplies, Parts, and Service
- 5.5 Optional Equipment
- 5.6 Wiring Diagram

1.0 Introduction & Configuration Options

1.1 OVERVIEW OF CONFIGURATIONS

The MMET-53 is available in multiple configurations. Please be sure to review your ordered configuration and refer to the corresponding sections of this manual for instructions.

1.1.1 Threshold configurations:

- Insulated rear wall configuration – some versions of the MMET-53 include a framed, insulated rear wall at the rear door threshold. This wall also has an insulated door so that the trailer's doors are always fixed open, and the insulated door is only opened when actively loading/unloading. This configuration does not include an exterior scaffold platform.
- Scaffold configuration – some versions of the MMET-53 do not include a framed, insulated rear wall inside the trailer. Instead, these have an exterior section of scaffolding that creates a platform adjacent to the trailer's rear doors. In this case, a removable ramp is used to transition from the scaffold platform to the interior of the trailer. When actively loading/unloading, the trailer doors need to remain open with the small ramp in place. When not loading/unloading, the trailer doors must remain closed to prevent the loss of cold air.

1.1.2 Ramp configurations:

- Preassembled ramp configuration – some versions of the MMET-53 include a preassembled rigid ramp. This variation is quicker to set up but requires more people to position it and is not as compact when stored.
- Rollable ramp configuration – some versions of the MMET-53 include a disassembled rollable ramp. This variation stores more compactly and requires less people for install, but it is a bit slower to assemble and position in place.

1.1.3 Solar charger option:

- Some versions of the MMET-53 include a solar panel to charge the batteries. (Section 3.3)

1.2 OVERVIEW OF OPERATION AND UNIT DESIGN

The MMET-53 is designed to maintain 35°F interior temperature at 110°F outside ambient temperatures while stationary. The refrigeration unit is designed to run on its own internal diesel engine. Interior lighting is designed to be powered from a dedicated 120V 15A shore power source. A heavy-duty electrical extension cable is provided.

Unit maintenance is minimal and is detailed in manuals found herein and in the refrigeration unit manual found inside the document storage box located on the inside wall of the MMET.

THIS MANUAL IS DESIGNED TO BE USED IN CONJUNCTION WITH THE REFRIGERATION UNIT MANUAL, MAINTENANCE PROCEDURES, SAFETY WARNINGS, ETC. USERS SHOULD BE THOROUGHLY FAMILIAR WITH ALL MANUALS AND GUIDES PRIOR TO OPERATING THE MMET. USERS ARE ENCOURAGED TO MAINTAIN ACCURATE MAINTENANCE LOGS.

2.0 Quick Start Guide

1. Park trailer on level ground leaving a minimum of 36-feet of level ground behind trailer for ramp and ramp loading area
2. Disconnect trailer from tractor
3. Start refrigeration unit and set temperature to 35-degrees F – unit may take several hours to reach set temperature, this is normal. The sooner the refrigeration unit is started, the sooner the interior will reach desired temperature
4. Open and secure rear doors using chains provided
5. Climb into rear of trailer (use extreme caution when climbing into or out of trailer)
6. Once inside, remove and run the electrical extension cable to shore power source and plug male end into power source, female end into receptacle on rear wall labeled “INTERIOR LIGHT POWER INPUT”. Plugging in this cable will power the interior lights (always on) and power the rear area light (illuminates only when dark and activated by motion)
7. Remove ramp components (rolled up ramp sections, railings and loose items in plastic crate OR preassembled rigid ramp)
8. Remove scaffold components, if equipped (yellow frame pieces, cross braces, planks, and chains)
9. Disregard this step if your unit has a rear insulated wall and is not equipped with scaffolding. If unit is equipped with scaffolding, assemble scaffold as shown in SCAFFOLD ASSEMBLY INSTRUCTIONS at rear of trailer. Ensure the platform is level and provides clearance for the locking hardware on the trailer doors
10. Assemble and secure ramp by following either the PREASSEMBLED or the ROLLABLE RAMP ASSEMBLY INSTRUCTIONS herein
 - a. NOTE: if equipped with scaffolding, the ramp assembly will attach to scaffold, NOT rear of trailer
11. Enter trailer and remove rack securement straps, trays and/or racks as desired
12. Close trailer doors as needed to assist in initial cooldown

NOTE: When straps are not being used, secure both ends to wall in e-track or stow in plastic crate to keep from laying on floor

IMPORTANT: Check all ramp components and fittings regularly and tighten and adjust as necessary

IMPORTANT: Take care to ensure that trailer, ramp and loading areas are properly marked to avoid collision or trip hazards (i.e. use of traffic cones, barricades, caution tape, etc.)

IMPORTANT: To maintain proper temperature of 35-degrees, always keep the rear door closed unless required to be open for loading and unloading only. When loading and unloading, temperatures may drop – it may take several hours for temperatures to fully recover – this is normal

3.0 MMET-53 Basic Operation

3.1 REFRIGERATION UNIT OPERATION (ONBOARD DIESEL ENGINE OPERATION) (PRIMARY)

To start refrigeration unit, turn the toggle switch on driver side of refrigeration unit to START. Wait for refrigeration unit to auto cycle through diagnostic tests. After about one minute, refrigeration unit should start. Check that temperature is set to 35°F. If set to a different temperature, adjust as necessary.

Check that fuel level is adequate when starting and multiple times daily while operating.

Detailed refrigeration unit instructions can be found in operators manual located inside records box on interior wall.

In order to maintain desired interior temperature, ensure that the rear entry door is closed and latched at all times unless absolutely necessary for loading or unloading. NOTE: It may take several hours to initially reach set temperature.

Detailed refrigeration unit instructions can be found in operators manual located inside records box on interior wall.

IMPORTANT: The refrigeration unit requires diesel fuel to operate. The MMET is equipped with its own fuel tank that will have to be checked and filled periodically. As a guideline only, typical usage is a full tank every 2-4 days depending on usage, outside temperatures, humidity, etc. NOTE: When ordering fuel, it is OK to fill with “dyed” non-taxed diesel fuel. (IF EQUIPPED) a rooftop solar panel independently trickle charges the onboard battery whenever the unit is exposed to sunlight – it is also fused inline next to the battery.



HIGH VOLTAGE! WARNING - Your Disaster Portable Morgue Unit utilizes high voltage power to operate. *THE REFRIGERATION UNIT COVER SHOULD BE CLOSED AND LATCHED AT ALL TIMES UNLESS REQUIRED TO PERFORM MAINTENANCE OR TROUBLESHOOTING. THE REFRIGERATION UNIT CONTAINS HIGH VOLTAGE. IMPROPER USE CAN CAUSE ELECTRICUTION. ELECTRICAL MAINTENANCE SHOULD ONLY BE PERFORMED BY A LICENSED ELECTRICIAN OR CERTIFIED SERVICE TECHNICIAN.*

3.2 LIGHTING

The MMET-53 is equipped with internal and rear 120VAC LED lighting. To operate, run the electrical extension cable to shore power source and plug male end into power source, plug female end into receptacle on rear wall labeled “INTERIOR LIGHT POWER INPUT”. Plugging in this cable will power interior lights (always on) and power the rear area light (only when dark and only when activated by motion). NOTE: Be sure that power cable does not create a trip hazard.

3.3 SOLAR PANEL BATTERY CHARGER (IF EQUIPPED)

The MMET (IF EQUIPPED) is equipped with a rooftop solar panel battery charger on the front. The solar panel battery charger will automatically trickle charge the batteries whenever the panel is exposed to sunlight.

The solar panel is equipped with an inline fuse located inside the generator engine compartment immediately next to battery.

NOTE: Solar panel efficiency is decreased exponentially when the panel is dirty or is partially shaded (i.e. by fallen leaves or overhanging tree branches, etc.). For proper charging and battery maintenance, solar panel **MUST** have a full, unobstructed view of the sky, be free of shadows and debris and be cleaned regularly.

3.4 TRAILER DOORS

It is imperative that the doors remain closed and latch remains secured at all times when not actively loading/unloading in order to maintain interior temperature. If unit is equipped with the insulated wall at the rear of the trailer, only that door needs to stay closed (the trailer doors can remain open and secured for convenience)

3.5 LOOSE INVENTORY (STANDARD)

The MMET-53 is equipped from the factory with the following loose inventory:

- (14) Cadaver Racks with Ratchet Straps
- (56) Cadaver Trays with Cam-Straps
- (1) Full ramp assembly
 - Some units are configured with a rigid, pre-assembled ramp
 - Other units are configured with a disassembled rollable-ramp, including:
 - (4) Ramp Sections with Ratchet Straps (1 top end, 1 bottom end and 2 center)
 - (8) Ramp Handrail Sections with Ratchet Straps
 - (8) Ramp Handrail Mounting Cup T-Bolts
 - (16) Handrail Mounting Cups
 - (6) Ramp Support Legs (2 Long, 2 Medium, 2 Short)
 - (2) E-track “rings” (for securing ramp handrails)
 - (6) Ramp Section Locking Detent Pins
- (1) 7/16” box wrench
- (1) Allen Wrench
- 50-Foot 120VAC/25A Shore Power Cable
- (2) 2x4x48 Lumber Piece
- Storage Crate
- (1) Scaffolding Package (only if not equipped with insulated rear wall)
 - (2) 5’x3’ scaffold panels
 - (3) Scaffold walkboards
 - (4) Scaffold jacks
 - (2) Scaffold pivoting crossmembers
 - (2) Scaffold P-Panels
 - (2) Scaffold corner posts
 - (2) Scaffold safety chains
 - (2) Scaffold 5’ straight braces
 - (1) Small portable ramp
- Refrigeration Unit Manual, MMET Operator Manual and Maintenance Logs (All located In Document box on Interior Wall)

Please contact Acela, Inc at (800) 940-0508 for replacement inventory

PDF copies of all manuals can be found at www.paladinprepare.com/support/downloads

3.6 MAINTENANCE

The MMET is requires very little maintenance. Maintenance is limited to:

Report refrigeration unit hours to Acela every 30 days

Maintain refrigeration unit according to manufacturers' instructions

Check all ramp components and fittings regularly and tighten and adjust as necessary

Clean interior and all loose items as required

Inspect and maintain tires, hubs and brakes

Clean solar panel (IF EQUIPPED) on a monthly basis (minimum) and keep it free from debris and shade (if stowed outside)

3.7 STOWING EQUIPMENT (when not in use)

The MMET was designed to safely stow all equipment provided. Cadaver trays should be placed on the racks and taped to the racks securely. Racks should be ratchet strapped to walls. Ramp components should be broken down and stowed per the photographs found in the RAMP ASSEMBLY INSTRUCTIONS. Shore power cable should be stored in red storage crate Document box located on the inside wall should be checked for all manuals, guides and maintenance logs.

Replacement parts and optional accessories can be ordered by calling Acela at (800) 940-0508.

PDF versions of all manuals can be downloaded from www.acelatruck.com/support/downloads

4.0 Assembly & Disassembly Instructions

4.1 PREASSEMBLED RAMP SETUP INSTRUCTIONS (Rollable ramp in Section 4.2)

Some versions of the MMET-53 are equipped with a preassembled heavy-duty access ramp. Normally it will take four individuals about 20 minutes to position and secure for the first time following these directions carefully.

IT IS IMPORTANT THAT THESE INSTRUCTIONS BE FOLLOWED CAREFULLY IN ORDER TO AVOID INJURY

USE EXTREME CAUTION WHEN HANDLING RAMP COMPONENTS NOT TO PINCH FINGERS OR OTHER BODY PARTS. MAJOR INJURY CAN OCCUR.

Ensure the trailer is parked and uncoupled from the tractor

Open the rear doors and unstrap the preassembled ramp from the wall of the trailer

Using at least four people and/or a forklift, remove the ramp from the trailer by sliding rearwards out of the trailer doors. When the ramp is just shy of halfway out, use the edge of the trailer as a pivot and carefully lower the rearward end of the ramp onto the provided 4-wheel furniture dolly (on the ground). Slide ramp on the dolly and wheels most of the way out of the trailer until the tallest ramp legs are at the edge of the trailer floor. Using four people, carefully lower the remaining portion of the ramp onto the ground, then position the ramp so that it is 8-10 feet away from the rear end of the trailer.



Unstrap and remove all scaffolding components from the trailer

Jump to Section 4.4 “SCAFFOLD ASSEMBLY INSTRUCTIONS” of this document and carefully follow all of the scaffold assembly instructions, then return to this section

After successful assembly of the scaffolding, position the ramp so that it is perpendicular to the scaffolding, centered between the P-shaped poles on the rear-most side, and tight to the scaffolding - **DO NOT WALK ON RAMP UNTIL IT IS FULLY STRAPPED AND SECURED!**

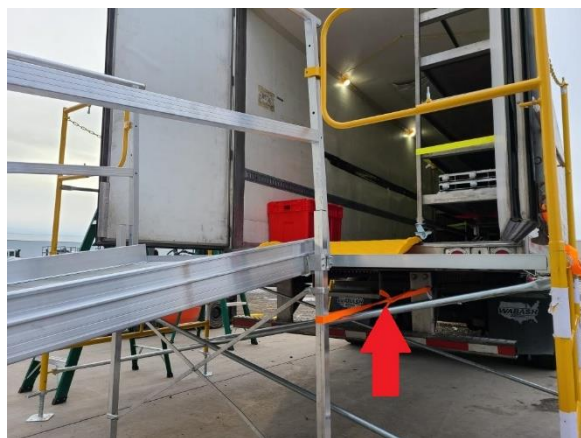


Remove the furniture dolly from the lower end of the ramp so that it sits directly on the ground

Adjust the legs on the ramp as necessary to ensure that the upper end of the ramp is level and flush with the scaffold's platform – MAKE SURE ALL LEG ADJUSTMENT SCREWS ARE TIGHTENED SECURELY!



Position two (2) heavy-duty ratchet straps so that they attach to the uppermost ramp legs, run underneath the scaffold platform, and then attach to the rear bumper of the trailer. Adjust and ratchet down until tight and fully secured



Ensure that the ramp, scaffold, and trailer are tight to each other – there should be now space or play between any of these assemblies (once everything is verified and secure, it is now safe to walk on the ramp)

Position the small (yellow) portable ramp in the trailer doorway threshold when loading or unloading by aligning and inserting the alignment pins through the ramp and into the holes on the edge of the trailer floor/threshold

KEEP REAR DOORS CLOSED AND SECURED (WITH RAMP REMOVED) WHEN NOT ACTIVELY LOADING/UNLOADING TO PREVENT LOSS OF COOL AIR!

4.2 ROLLABLE RAMP ASSEMBLY INSTRUCTIONS

(Preassembled ramp Section 4.1)

Some versions of the MMET-53 are equipped with a portable 24-foot, 1500# capacity heavy-duty access ramp that is shipped in modular sections. Normally it will take two mechanically inclined individuals about 45-60 minutes to set up their first time following these directions carefully.

IT IS IMPORTANT THAT THESE INSTRUCTIONS BE FOLLOWED CAREFULLY IN ORDER TO AVOID INJURY

USE EXTREME CAUTION WHEN HANDLING RAMP COMPONENTS NOT TO PINCH FINGERS OR OTHER BODY PARTS. MAJOR INJURY CAN OCCUR.

Carefully remove all ramp components and stage near rear end of trailer

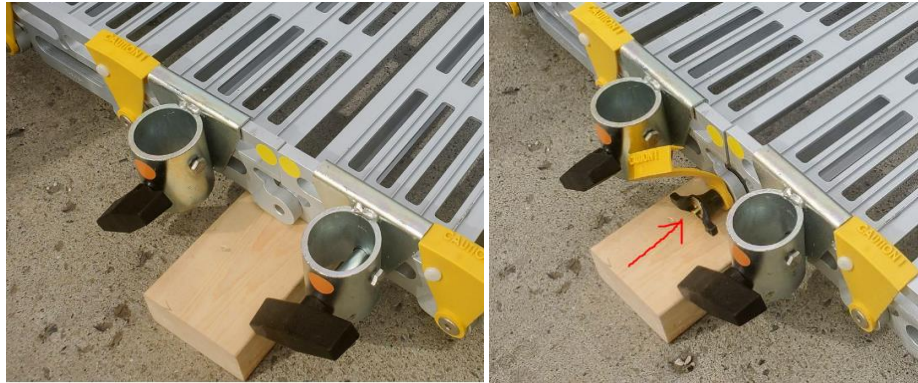
Carefully unroll the first (highest) ramp section (indicated by color coded dots on the side of the ramp – Orange (towards trailer) and Yellow (towards street end of ramp). This first ramp section (orange end) should be laid flat on ground approximately one foot from rear of trailer, 90-degrees to the rear end of trailer. Once in place, place the 2x4 lumber underneath the last few inches of the Yellow end of the ramp (elevating that end off of the ground).



Carefully unroll the next ramp section (indicated by color coded dots on the side of the ramp – Yellow (towards first section) and Red (towards street end of ramp). Marry the Yellow end of the second ramp to the Yellow end of the first ramp (resting on 2x4 lumber). Insert locking detent pins to secure sections. Make sure detent pins are inserted all the way.



Move 2x4 lumber to the end of second section and repeat process using color coded dots until all four sections are secured together.



Using at least two and up to four people, lift the trailer side end of ramp and drag the ramp towards the trailer into position with ramp upper end plate placed over the rear-most lip of the trailer, as shown in photo. Make sure that ramp is positioned 90-degrees to trailer and properly positioned on tail of trailer.



Position each of the ramp legs according to the other color-coded dots found on the side of the ramp sections (Red to Red, Blue to Blue, Green to Green). Tighten all into place using the hand screws and rectangular machined nuts. Adjust all legs vertically by spinning the bottom screw jacks so that ramp sections are straight and there is no “play” in the ramp when positioned.

Secure the first (upper) section of ramp to the trailer rear bumper with ratchet strap.

Position each of the handrail sections by inserting the vertical handrail uprights into the handrail “cups” on the sides of the ramp sections according to the color-coded dots found on the cups (Orange in Orange, Yellow in Yellow, Green in Green, Red in Red). Once uprights are fully inserted into the appropriate cups tighten the bolt in each cup to each upright with provided wrench.



Check that all bolts and hand screws are tight, that all detent pins are secured in place, that ratchet strap (ramp to trailer) is tight and all legs are adjusted properly.

Place box wrench and any other loose items such as ratchet straps into storage crate and place closed crate on floor in forward part of trailer interior.



4.3 ROLLABLE RAMP DISASSEMBLY INSTRUCTIONS

IT IS IMPORTANT THAT THESE INSTRUCTIONS BE FOLLOWED CAREFULLY IN ORDER TO AVOID INJURY

USE EXTREME CAUTION WHEN HANDLING RAMP COMPONENTS NOT TO PINCH FINGERS OR OTHER BODY PARTS. MAJOR INJURY CAN OCCUR.

Ensure all racks, trays, etc. are inside of trailer and secured for transport before disassembling ramp.

Loosen all handrail bolts with provided box wrench.

Remove all handrails and stack inside of trailer as shown in photo below:



Loosen and remove all ramp legs, place legs, hand screws and rectangular machined nuts into storage crate.

Loosen and remove ratchet strap securing ramp to trailer bumper.

Using at least two and up to four people, lift the trailer side end of ramp and drag the ramp away from the trailer far enough so that the ramp can be lowered flat to the ground.

Once ramp sections are flat on the ground, remove the six detent pins that hold the ramp sections together.

Carefully stand each ramp section on its side and roll up tightly starting at one end and moving towards the other. Use care not to damage the ramp sections, cups or hand screws. Load into trailer and secure with ratchet straps as shown in photos.

Repeat until all ramp sections are rolled and securely stowed inside the trailer.





4.4 SCAFFOLD ASSEMBLY INSTRUCTIONS

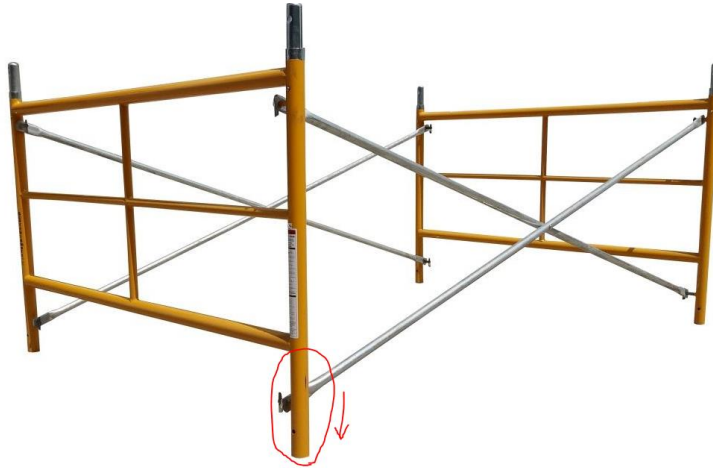
The MMET-53 is equipped with a portable 10-foot wide scaffold assembly that is shipped in modular sections. Normally it will take two mechanically inclined individuals about 10-20 minutes to set up their first time following these directions carefully.

IT IS IMPORTANT THAT THESE INSTRUCTIONS BE FOLLOWED CAREFULLY IN ORDER TO AVOID INJURY

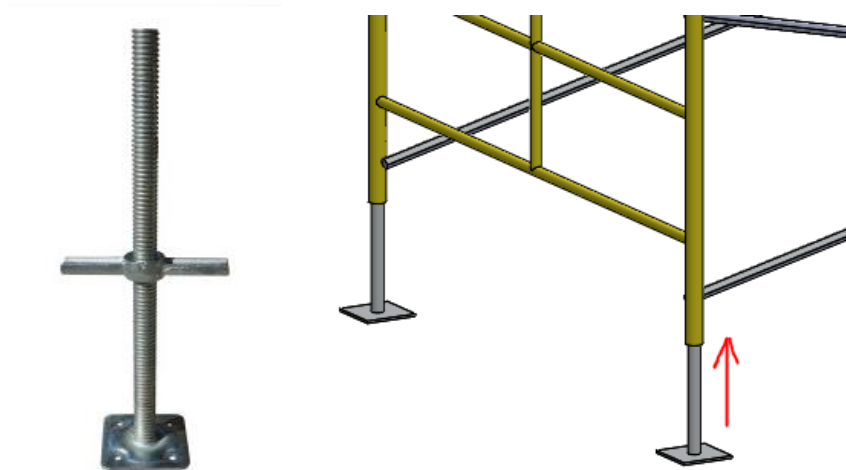
USE EXTREME CAUTION WHEN HANDLING SCAFFOLD COMPONENTS NOT TO PINCH FINGERS OR OTHER BODY PARTS. MAJOR INJURY CAN OCCUR.

Carefully remove all scaffold components and stage near rear end of trailer

Begin by erecting the main scaffold section. Orient the end panels so that the longer leg portions are facing downwards and attach the X-braces as shown:



Insert the level jacks into the bottom of the scaffold panels, but do not start leveling yet:

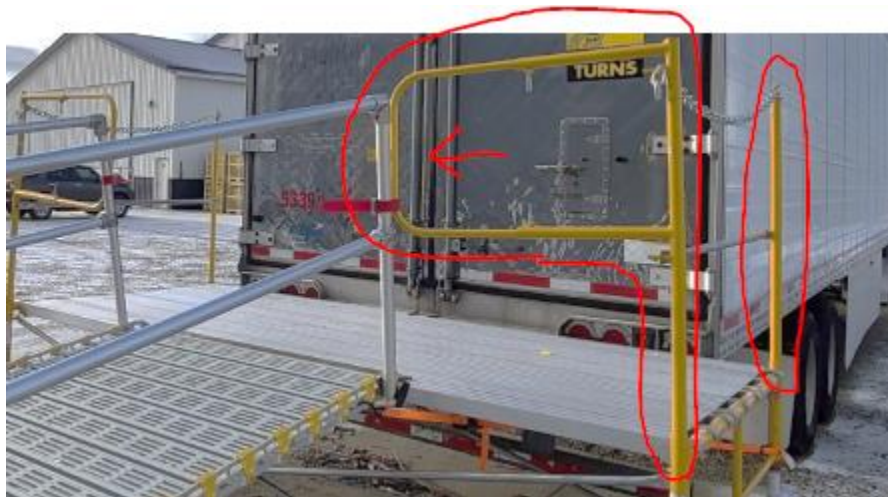


Place the 10ft walkboards across the top of the scaffolding end panels so that the hook-shaped ends loop over the top rungs of the scaffold, slide all walkboards towards rear of the trailer to remove any spacing

Use the jack legs to level the platform and set the height of the platform. The platform should sit between 4-8" below the deck of the trailer so that the trailer doors' locking hardware can swing free of obstruction (see red circles):



Once the desired height is set and platform is level, add the corner posts to the corners of the scaffold closest to the trailer. Also add the P-Poles to the corners of scaffold furthest away from the trailer, ensuring that the P-shaped protrusions face each other and are fully extended:



Add the horizontal 5ft braces to secure the middle of these pieces, then add the chain to the top. Both will slide over the protruding pins and self-lock in place (ensure the chain is as tight as possible for safety):



Build the ramp as described in the following **RAMP ASSEMBLY INSTRUCTIONS** and secure to the scaffolding as shown with ratchet straps for safety:



When loading or unloading the trailer, use the provided portable secondary ramp. You will not be able to shut the trailer doors when this ramp is in place, so it is important to only install when actively loading or unloading. When not loading/unloading, remove the portable ramp and fully shut and secure the rear trailer doors to prevent cold air from escaping:



5.0 Miscellaneous Items

5.1 LONG TERM STORAGE

When storing the unit for long periods of time:

- Check all systems and interior/exterior lighting for proper performance
- Thoroughly clean, disinfect all interior surfaces, accessories, parts, etc. – use flooring cleaners approved for vinyl flooring.
- Allow interior and all items to dry completely before sealing door
- Check that all inventory is present and properly stowed
- Close and lock rear door
- Check and perform all required generator and refrigeration unit maintenance
- Add appropriate amount of diesel fuel additive designed specifically for long-term storage to generator fuel tank and run generator for 5 minutes (minimum)
- Check tires for wear and aging, replace as necessary
- Check tire pressures (proper pressures are noted on the side walls near tires, fill as necessary)
- Cover tires if they are exposed to sunlight
- Check DOT lighting (stop, turn, tail, marker and clearance lights)
- Make any repairs as necessary

NOTE: When storing outside, shore power is not required. The battery will be maintained by means of a rooftop solar panel battery charger (IF EQUIPPED).

If storing without plugging into shore power, immediately after parking, inspect and clean the rooftop solar panel battery charger (IF EQUIPPED). Check and clean every 30 days (minimum). Keep free from debris and shade.

If storing while plugged into shore power, simply plug unit in and ensure AC circuit breakers are in the ON (up) positions and the refrigeration unit is turned OFF.

Start and run generator and refrigeration unit for a minimum of 20 minutes every 30 days

NOTE: Long-term storage and maintenance services are available by calling Acela at (800) 940-0508

5.2 TOWING

The MMET is equipped with a 2 5/16" ball-style hitch and a 7-Pin Round style electrical/wire connector.

MMET factory shipping weight (approximate and subject to change):

MMET40: 14,500 lbs.

Ensure that your tow vehicle is rated to tow the appropriate loads. Make sure all loads are secured before moving the trailer

5.3 TROUBLESHOOTING

MMET is plugged in, and/or generator is running, power light is illuminated but no power is being supplied to refrigeration unit – Check that 240VAC circuit breaker is in the ON position. Check again that refrigeration unit has power by turning the compressor power and refrigeration controller ON at the

control head. Probe switched side of AC circuit breaker – if no power then check transfer switch and circuit breaker.

MMET is plugged in but power light is not illuminated – Check for AC power by probing inputs to the transfer switch or checking that the cooling fan inside the power distribution box is running. If MMET has AC power, check for faulty light.

Generator is running but power light is not illuminated - Check for AC power by visually confirming that the cooling/exhaust fan inside the power distribution box is running or by probing inputs to the transfer switch. If AC power is detected, check for faulty light or broken wire. If no AC power is detected, check generator main panel circuit breaker(s) are ON and if necessary, check the main fuse (behind the main panel). Service generator if required.

AC Loss of Power Alarm is activated (red light is flashing and beeper [could be] sounding) (NOTE: audible alarm can be turned off with yellow switch on side of power distribution box) – Indicates that MMET has power (from shore power source or generator) but no 240VAC is being provided to refrigeration unit. Check 240VAC circuit breaker is in the ON (up) position. Check transfer switch for proper operation. Replace circuit breaker if required.

No interior/exterior lights – Check that 12VDC Master Light Switch is in the ON (up) position and indicator light is illuminated. Check that battery is charged.

Brakes not functioning properly – Bring trailer to a licensed trailer dealer or maintenance facility for repairs.

DOT lighting not functioning properly – Check electrical source (i.e. tow vehicle). Bring trailer to a licensed trailer dealer or maintenance facility for repairs.



HIGH VOLTAGE! WARNING - Your Disaster Portable Morgue Unit utilizes high voltage power to operate. *THE POWER DISTRIBUTION BOX COVER SHOULD BE CLOSED AND LATCHED AT ALL TIMES UNLESS REQUIRED TO CONTROL REFRIGERATION UNIT, PERFORM MAINTENANCE OR TROUBLESHOOTING. THE POWER DISTRIBUTION PANEL CONTAINS HIGH VOLTAGE. IMPROPER USE CAN CAUSE ELECTRICUTION. ELECTRICAL MAINTENANCE SHOULD ONLY BE PERFORMED BY A LICENSED ELECTRICIAN*

5.4 SUPPLIES, PARTS, AND SERVICE

Replacement and maintenance parts and supplies are available by calling (800) 940-0508

All manuals, guides and logs can be downloaded from www.acelatruck.com/support/downloads

5.5 OPTIONAL EQUIPMENT

- Auxiliary generator fuel tank is available

Other options or customization may be available.

Please contact Paladin - A division of Acela, Inc. at (800) 940-0508 for information about optional items.

NOTE: Long-term storage and maintenance services are available by calling Paladin - A division of Acela, Inc. at (800) 940-0508

5.6 WIRING DIAGRAM

Can be requested from Acela at (800) 940-0508 or downloaded from www.paladinprepare.com/support/downloads