

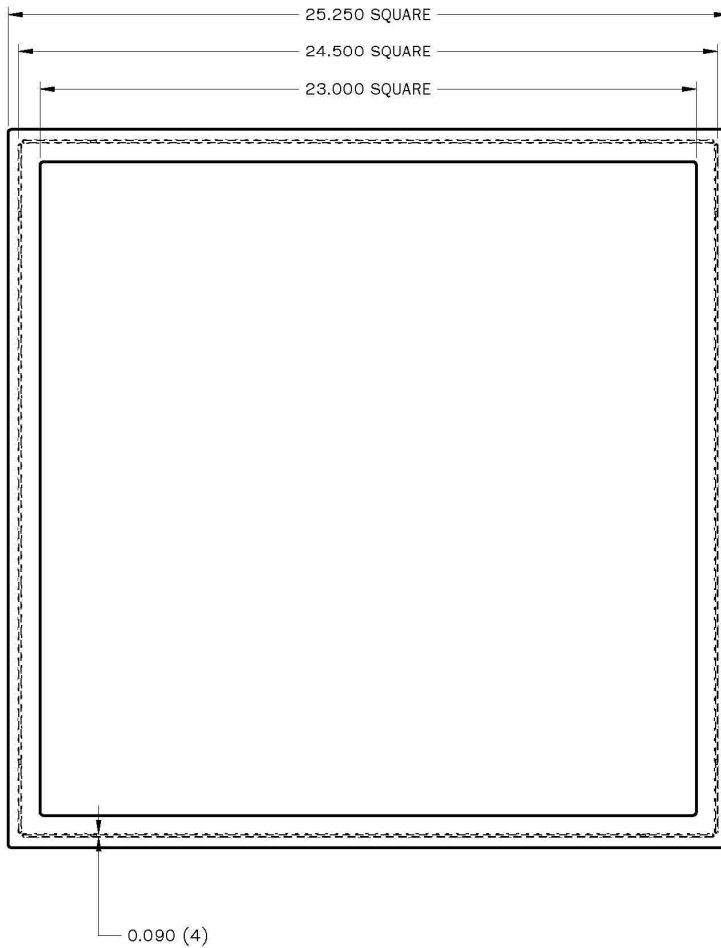


SUBMITTAL DRAWING: HT-2X2-SMF

SUBMITTAL#: SMF-011922

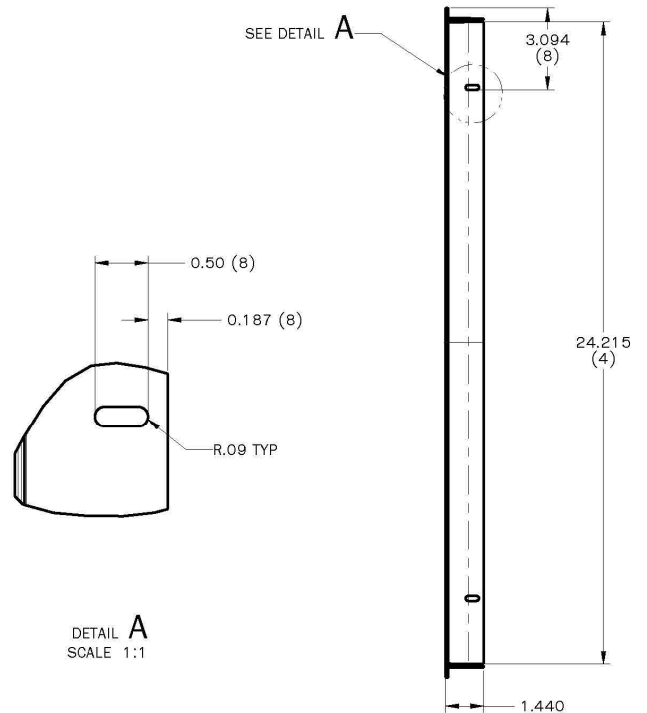
2' X 2' Surface Mount Frame

- SUPERIOR QUALITY PLASTIC—WON'T DENT
- NO ASSEMBLY REQUIRED
- WONT RUST, CORRODE OR DISCOLOR
- USE WITH ANY HAVACO 2X2 IN FIXED CEILINGS
- STANDARD WHITE OR BLACK
- NO SHARP EDGES



COLOR

- WHITE
- BLACK



JOB NAME _____

LOCATION _____

ARCHITECT _____

ENGINEER _____

CONTRACTOR _____

SUBMITTED BY

DATE