

### List of Materials



#### Goldilox Fabric Roll

FABRIC ROLL SIZE  
65"W x 375'L  
TOTAL FABRIC COVERAGE AREA  
2,000 sq ft/roll



#### Goldilox Adhesive Bucket

ADHESIVE VOLUME  
5 gallons/bucket  
TOTAL ADHESIVE COVERAGE AREA  
70 sq ft/gallon



#### Low-Nap Roller

Foam or soft rubber floor squeegee or low-nap roller



#### Paddle Mixer and Drill



#### Cutting Tool

Razor knife, box cutter, scissors, or similar cutting tool

**IMPORTANT:** Ensure Goldilox is suitable for the surface onto which it will be applied by spot testing to specific jobsite conditions.

**CAUTION: DO NOT install over sealer, cure and seal, or other topical coatings, with the exception of dissipating resin cures.**

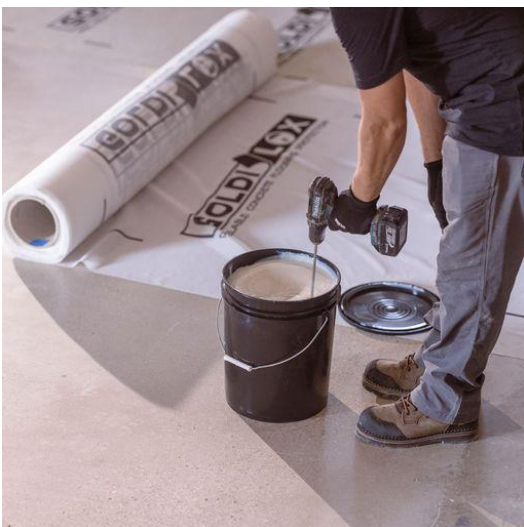


### Prepare

1. Ensure the concrete has cured for a minimum of 10 days and achieves a Mohs hardness rating of 4 or higher. The slab surface just be clean, free of debris, and completely free of standing water. If the slab is exposed, do not apply the material if rain or other moisture saturation is expected within 24 hours.
2. Apply *Goldilox Protective System* to concrete surfaces that are hard trowel finished, or polished and densified only. **DO NOT** apply to broom finish or rough concrete surfaces. **DO NOT** apply over topical sealers, guards, epoxies, paints, colorants or other topical finishes without thorough testing. **DO NOT** apply over acrylic based cure and seals. Although *Goldilox Protective System* can protect many surfaces without damage to coatings, it was designed and approved for uncoated smooth concrete surfaces **ONLY**.
3. Ensure concrete surface is between 40 and 100 deg F and surface pH is below 11.0 and relative humidity is below 90%.
4. Caution: 1L or PLC concrete mix designs tend to be more porous in nature and may negatively affect the removal of Goldilox from the concrete surface. Additional steps are required. Contact our office in writing: [info@goldiloxusa.com](mailto:info@goldiloxusa.com) before using Goldilox with this type of concrete.

### Mix

1. Thoroughly mix each bucket of *Goldilox Adhesive*.
2. Goldilox Adhesive is shipped as a concentrate and should be diluted to ensure proper coverage rates and product performance.
3. Add up to 32 oz of clean water to every 5 gal of adhesive and mix thoroughly with a mechanical mixer such as drill and paddle mixer.





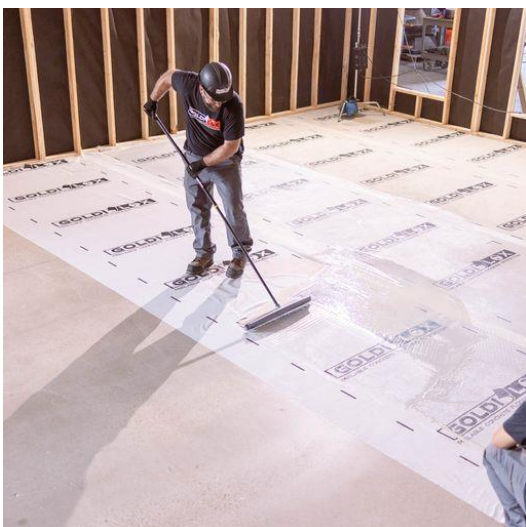
### Roll Out

1. To start, roll out *Goldilox Textile Fabric* ensuring the logo is facing up.
2. *Goldilox Adhesive* will not stain the concrete. However, because *Goldilox Protective System* can affect evaporation, sun, elements and general exposure, these differences can result in color variation from the protected and exposed concrete surface. To reduce the risk of a visible lines when *Goldilox Protective System* is removed, it is IMPORTANT to apply *Goldilox Protective System* along a natural termination point such as walls, control joints, or changes from polished concrete to another flooring type where any difference in concrete color will not be easily noticed.



### Apply Adhesive

1. Pour approximately 1 gal of *Goldilox Adhesive* directly on top of the *Goldilox Textile Fabric*.
2. Work in manageable areas to ensure the adhesive remains fluid and easy to apply. Do not pour out more adhesive than can be quickly spread. Over application of adhesive will yield lower coverage rates. Keep buckets closed when not in use to prevent the adhesive from skimming over.
3. Clean application tools using warm soapy water avoiding washout in drains, waterways or on top of finished surfaces.



### Even Application

1. Spread the adhesive evenly using a squeegee or low nap roller, ensuring an application rate of at least 70 sqft per gal with the correct adhesive dilution as outlined above. NOTE: In most cases a low nap roller will yield the highest coverage rate allowing the adhesive to be spread more evenly.
2. Inspect to ensure even coverage and that ALL fabric is fully covered and encapsulated with adhesive.



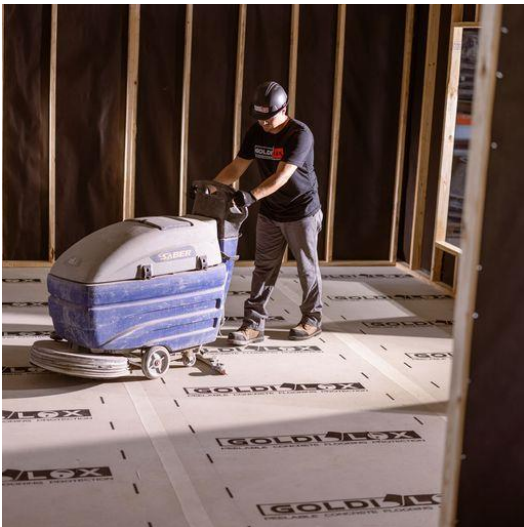
## Installation Instructions

www.goldiloxusa.com



### Underlap Method

1. Run a wet edge up to the dotted line on the roll that is being installed for the length of the working area to be installed.
2. Fold the fabric edge back on itself
3. Roll out a section of the next row and underlap this row under the flipped back portion of the preceding row creating an approx. 3" underlap.
4. Apply the adhesive bonding the two rows together creating a seamless lap.
5. NOTE: We have found this technique greatly increases installation production rates. The underlap method also reduces the chance of double applying adhesive along the seams. A double application of adhesive (ie, where twice as much adhesive is applied along the seam vs the rest of the fabric), may result in lap lines and should be avoided.



### Construction and Maintenance

1. Once the *Goldilox Protective System* has been installed and allowed to cure fully for 24 hrs proceed with construction and allow both machine and foot traffic.
2. Inspect *Goldilox Protective System* for any rips, tears, or jeopardized areas. To repair, simply apply glue over any small rips and tears to spot treat. It may be necessary to apply a patch of new Goldilox over large rips or tears using the same applications methods as above.
3. Oil spills should be cleaned up using *Goldilox Liquid and Oil Sorbent and Traction Agent*.



### Remove

1. To remove *Goldilox Protective System* start by cutting the textile fabric away from under walls, cabinets, or other coverings.
2. Proceed to remove *Goldilox Protective System* by simply peeling back to remove. Starting in a corner, peel back the covering at a 45 degree angle.
3. Dispose in construction dumpster or accordance with local regulations
4. Once removed inspect for oil stains. If oil has penetrated *Goldilox Protective System* resulting in stains, spot treat using *Goldilox Oil and Grease Stain Remover*
5. Once *Goldilox Protective System* is removed, you may proceed with the application of stains, dyes, guards, sealers, etc. Prior to application of topical products ensure Goldilox Adhesive is removed completely. *Best practice is to wet clean once removed.*



## Installation Instructions

[www.goldiloxusa.com](http://www.goldiloxusa.com)

### Terms & Conditions

Goldilox is not responsible for loss, damage, or injury resulting from failure to follow these installation instructions, misuse, improper installation, unsafe jobsite conditions, lack of appropriate personal protective equipment, unsuitable site conditions, incompatible materials, or use outside of Goldilox's standard policies. Any onsite demonstration, training, or verbal guidance provided by Goldilox is for general informational purposes only and does not replace, modify, or supersede these written installation instructions or Goldilox's Terms of Use, Terms and Conditions, Warranty, or other applicable policies. Goldilox representatives are not responsible for inspecting site conditions, verifying product compatibility, supervising installation, approving work performed by others, or ensuring jobsite safety or PPE compliance. The customer and installer remain solely responsible for proper site evaluation, compatibility determinations, safety precautions, and installation. In no event will Goldilox's aggregate liability exceed the price paid for this product. For full terms, please visit [www.goldiloxusa.com](http://www.goldiloxusa.com).

Link to installation Instructional Video

