



# FEATURE LIST.

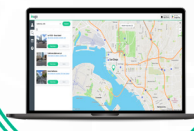
Inugo delivers a comprehensive digital platform for managing parking facilities, integrating advanced access and payment technologies.

Our product suite includes features that have been built with over ten years of research and development.

WHITE LABEL  
MOBILE APP



WHITE LABEL  
WEB APP



WHITE LABEL  
PAYMENT KIOSK



LPR CAMERAS



BLUETOOTH  
GATE CONTROL



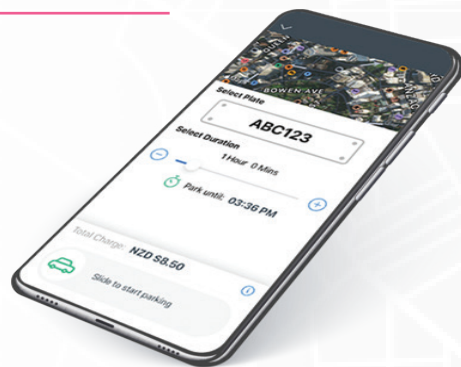
CLOUD-BASED  
MANAGEMENT



## MOBILE APP.

### CONTACTLESS PAYMENTS AND ACCESS

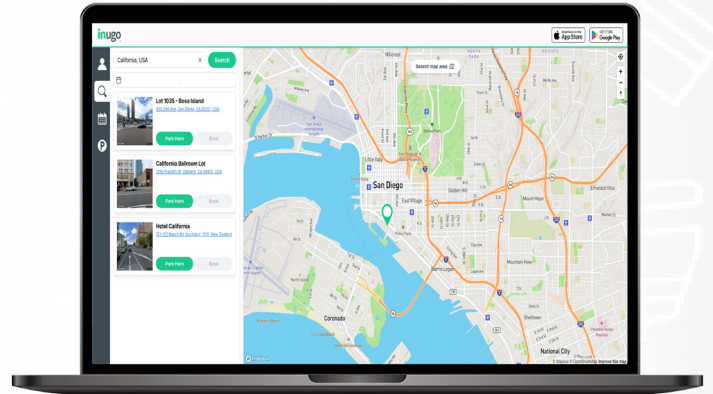
- » White-label to showcase your brand
- » Available on iOS and Android platforms
- » Detects the nearest parking locations based on user proximity
- » Search for parking spots directly in the app
- » Supports transient and monthly parking in gated or ungated lots
- » Self-service booking for passes, reservations, and contract parking
- » Supports express payments with Apple Pay and Google Pay
- » Flexible payment options at entry or exit
- » Stores and applies promotional codes
- » Validates parking sessions for seamless discounts
- » Hands-free on your car dashboard via Android
- » Enables user management of license plates
- » Simplifies payment method management
- » Offers opt-in or opt-out for marketing communications
- » Notifies users when parking sessions are about to expire
- » Allows remote extension of parking sessions
- » Monitor parking sessions and costs
- » Sends automatic payment receipts via email
- » Fully GDPR compliant
- » PCI compliant for secure transactions
- » Includes license plate lookup for enforcement



# WEB APP.

## 4 STEP QR CODE AND WEB-BASED APP-LESS PAYMENTS

- » White-label to showcase your brand
- » Detects the nearest parking locations based on user proximity
- » Search for parking spots directly in the web platform
- » Supports transient and monthly parking in gated or ungated lots
- » Self-service booking for passes, reservations, and contract parking
- » Supports secure online payments, including Apple Pay and Google Pay
- » Stores and applies promotional codes



- » Validates parking sessions for seamless discounts
- » Enables user management of license plates
- » Simplifies payment method management
- » Offers opt-in or opt-out for marketing communications
- » Notifies users when parking sessions are about to expire
- » SMS session reminder capabilities
- » Sends automatic payment receipts via email
- » Monitor parking sessions and costs
- » Fully GDPR compliant
- » PCI compliant for secure transactions
- » Provides anti-fraud monitoring through statistical transaction analysis
- » Allows instant enabling or disabling of parking sites
- » Promo code or validation functionality with prepaid transient sessions
- » Scan to pay can enable 'product' purchases

## SCAN TO PAY WITH 4 STEP QR CODE

In a Rush?  
Scan to Pay

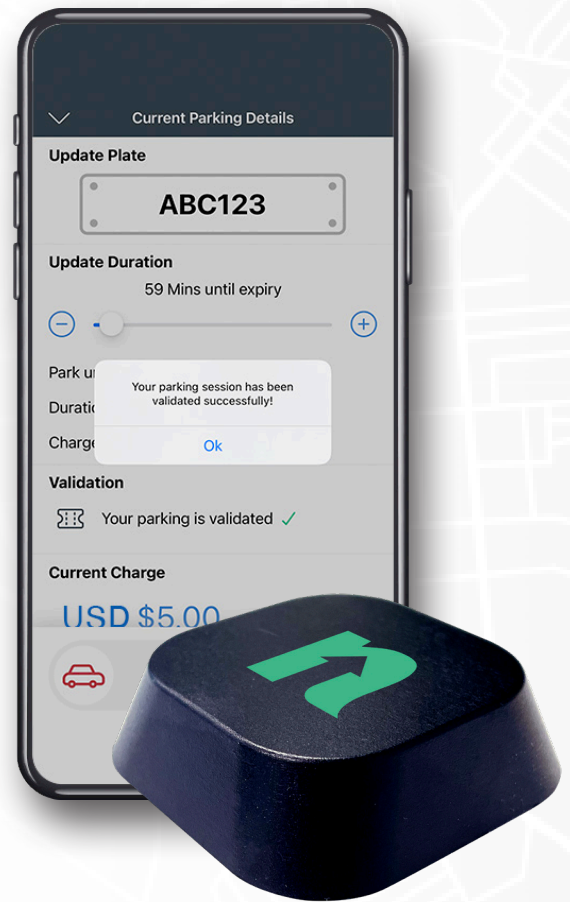


Code not scanning? visit [www.payforyourparking.com/456414](http://www.payforyourparking.com/456414)

Code not scanning?  
visit [www.payforyourparking.com/456414](http://www.payforyourparking.com/456414)

# VALIDATION BEACONS.

- » Contactless, instant validation using the white labelled app and bluetooth
- » Can be allocated to a single site or multiple sites
- » Full management and activity visibility along with financial reconciliation of applied discounts within the management portal
- » Set a percentage off, fixed amount off, or change to a new rate schedule
- » Configured remotely - no time or cost associated with sending out technicians or new hardware
- » Monitor where your parkers are validating in real time
- » 5 year battery life
- » Custom validation offers can be set for different user groups



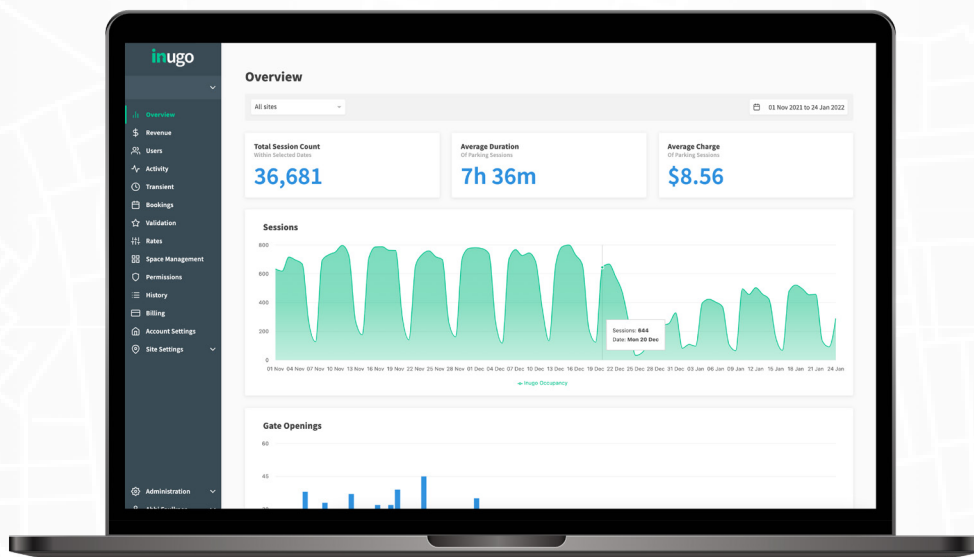
# PAYMENT KIOSK.



- » White-label to showcase your brand
- » Enables pay-on-entry transactions
- » Enables pay-on-exit transactions
- » Enables pay-on-foot transactions
- » Supports tap and insert card payments
- » Integrates with ANPR and barrier arm systems
- » Supports intercom integration with SIP lines
- » Powered over Ethernet (PoE) for simplified installation
- » Operates seamlessly offline
- » Sends notifications to operators during offline mode

# WEB-BASED MANAGEMENT PORTAL.

## SELF-SERVICE DIGITAL PARKING PLATFORM FOR SETTING UP AND MANAGING SITES



- » Consolidates all sites into a unified dashboard view
- » Supports event management for stadiums and large venues
- » Manages operators, clients and locations
- » Manages validations via QR codes, tariff changes, or percentage/monetary discounts
- » Locates customers, vehicles, and payments for efficient customer service
- » Manages end-to-end citations via ANPR cameras and direct mail
- » Provide real-time revenue and payment reporting across web, app, and kiosk
- » Provides anti-fraud monitoring through statistical transaction analysis
- » Delivers real-time reporting on gate activity, LPR access, and transient parking
- » Allows instant enabling or disabling of parking sites
- » Monitors real-time occupancy and activity across all locations
- » Maintains parking history and audit logs
- » Enables comprehensive rate management with occupancy-based pricing
- » Manages branding and QR code signage generation
- » Enables ANPR whitelisting for authorized access
- » Supports no-code integration builder for seamless customization
- » Schedule booking rates in advance
- » Manage violation rules and view breaches
- » Public or invite only capabilities
- » Enables custom access levels for team members



---

# LPR CAMERAS.

## TICKETLESS, FRICTIONLESS FREE FLOW PARKING

- » Leverages advanced AI models for license plate recognition, vehicle detection, colour, make, and model identification
- » Captures vehicle direction
- » Support for multiple lanes per camera
- » Delivers high-precision recognition with 95–99% accuracy
- » Features all-weather, vandal-proof, and tamper-resistant housing or bollards
- » Supports quick installation on poles, walls, or ceilings
- » Offline mode via control box, enables seamless operations during outages
- » Enables plate database management and whitelisting
- » Supports static and fixed enforcement
- » Monitors occupancy in real time
- » Enables demand-based pricing



---

# BLUETOOTH GATE CONTROLLERS.



- » Contactless gate opening via smartphone using Bluetooth or Internet
- » Supports single and multi-lane detection for versatile applications
- » Advanced loop detection ensures reliable vehicle-triggered operation
- » Gate-agnostic design compatible with nearly any gate type
- » Operates without internet for dependable performance anywhere
- » Quick overlay installation integrates with existing gate systems
- » Guided setup completes in under one hour with minimal expertise



# CCTV.

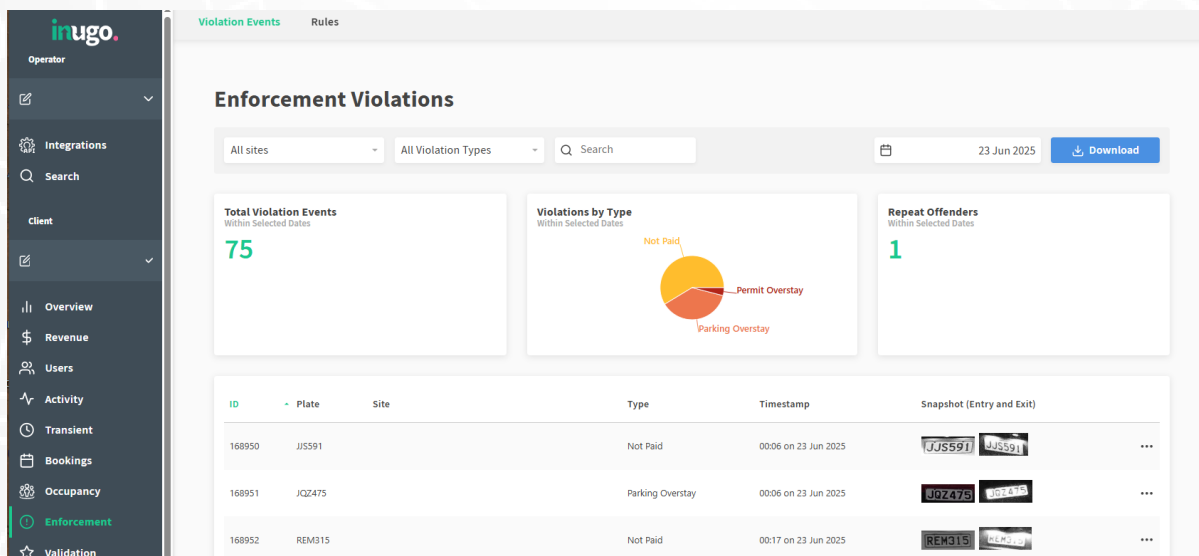
## 24/7 PARKING SECURITY

- » Sends alerts when certain criteria is breached
- » Vandal-proof and weather resistant hardware
- » Detects people, face, vehicle and vehicle alarms
- » Real time alerts to designated users
- » 20-day video storage
- » Utilises existing infrastructure to reduce install costs
- » Expandable system - more cameras can be added as needed
- » Cloud-based UniFi Web Platform with training



# ENFORCEMENT.

## CITATION MANAGEMENT WITHIN THE MANAGEMENT PORTAL



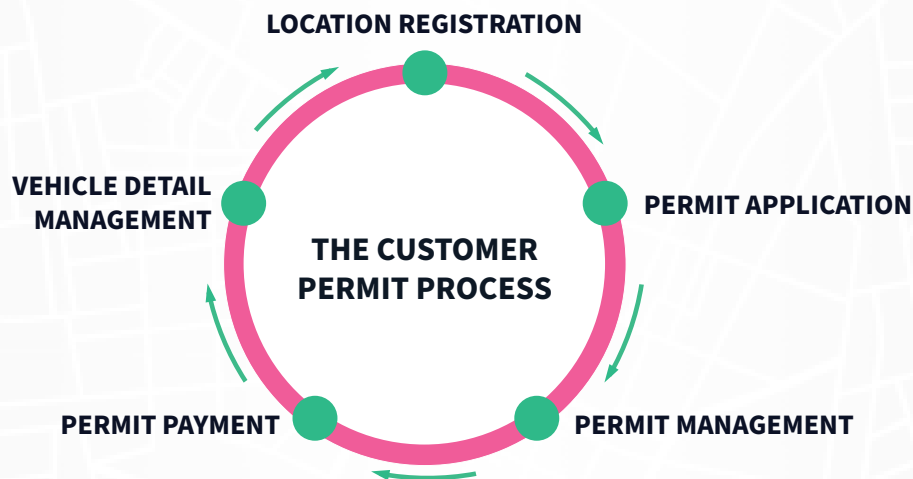
- » Defines time-limited, non-payment, and unauthorized location enforcement rules
- » Generates enforcement violations using ANPR cameras



# DIGITAL PERMITTING.

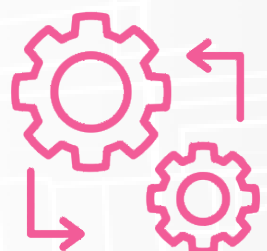
## RESIDENT, CONTRACTOR, STAFF, STUDENT OR CUSTOM PERMITS

- » Customisable to your business under the white labelled app
- » Invite only via unique QR code, web link or email address
- » Create and manage locations, works across multiple sites
- » Create and manage permit configuration
- » Track and manage permits applied for by customers
- » Manage customers in the management portal
- » Prioritise permit assignment based on permit application
- » Customers can register for a location, apply, manage and pay for permit themselves along with their vehicle details
- » Supports integrations and can overlay your existing set up
- » Options for tenants to sublet their permits
- » Application criteria & scoring such as: means tested, emissions impact, travel distance etc



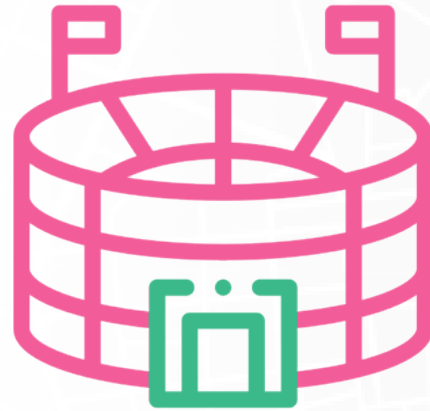
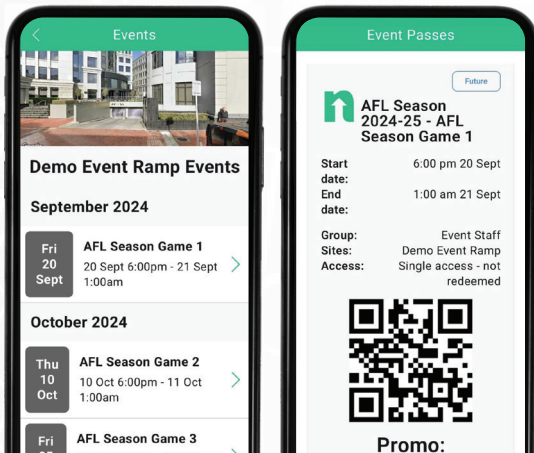
## SDK/API.

- » Embed all Inugo mobile app features, including Bluetooth/LRP access, plate management, and rates engine, into Android and iOS apps
- » Accelerate development by integrating robust, pre-built functionality into your existing technology



# EVENT MANAGEMENT.

ONE PLATFORM TO CREATE AND MANAGE YOUR EVENT PARKING



- » Set up and manage event series or individual events
- » Customise public or closed user groups with custom pricing and access terms
- » Monitor and report on occupancy per locations and space blocks
- » Download historic occupancy data for analysis
- » Issue event passes or whitelist attendees in bulk
- » Access can be managed via ANPR (plate read) or QR Code (manual scanning)
- » Ticketmaster integration capabilities
- » Can be enabled through the Inugo Mobile App or Web App

# BARRIER ARMS.



- » Multiple options to suit any requirements and budget
- » Use our Hardware-as-a-service model for less upfront costs
- » Integrate to suite of Inugo systems and existing PARCs equipment





# FEATURE BENEFITS.

## TRANSIENT

- » Process digital payments seamlessly within the mobile app and web app
- » Access gates via Bluetooth or license plate recognition (LPR)
- » Issue digital validation passes and promotional codes
- » Apply fixed-amount, percentage-off, time-based, or volume-based promotional codes

## BOOKINGS AND RESERVATIONS

- » Process digital payments seamlessly within the mobile app and web app
- » Access gates via Bluetooth or license plate recognition (LPR)
- » Issue digital validation passes and promotional codes
- » Apply fixed-amount, percentage-off, time-based, or volume-based promotional codes

## LICENSE PLATE RECOGNITION

- » Add unlimited license plates for flexible user management
- » Enable free-flow parking with automated plate recognition
- » Whitelist plates for prioritized or restricted access

## RATES

- » Offer dynamic pricing: early bird, event, time-variable, or fixed rates
- » Configure group-specific or public/private rate structures
- » Update pricing in real-time for maximum flexibility

## DIGITAL VALIDATION

- » Integrate Bluetooth beacons fully within the app for validation
- » Reconcile applied discounts financially via the management portal
- » Reconfigure validation beacons remotely for operational flexibility
- » Offer percentage-off or fixed-amount discount types

## CORPORATE PARKING

- » Control visitor access with integrated corporate permissions
- » Book limited bays externally for staff or visitors
- » Sublet booked bays with cost recovery options
- » Manage parking spaces efficiently with real-time oversight
- » Integrate with corporate employee directories for streamlined access
- » Configure group management settings and permissions

## INTEGRATION BUILDER

- » Trigger actions for parking session start/end, plate reads, payments, user sign-ups and more
- » Supporting various API authentication methods for secure integrations
- » Interface with CRM or ERP systems using JSON or XML formats