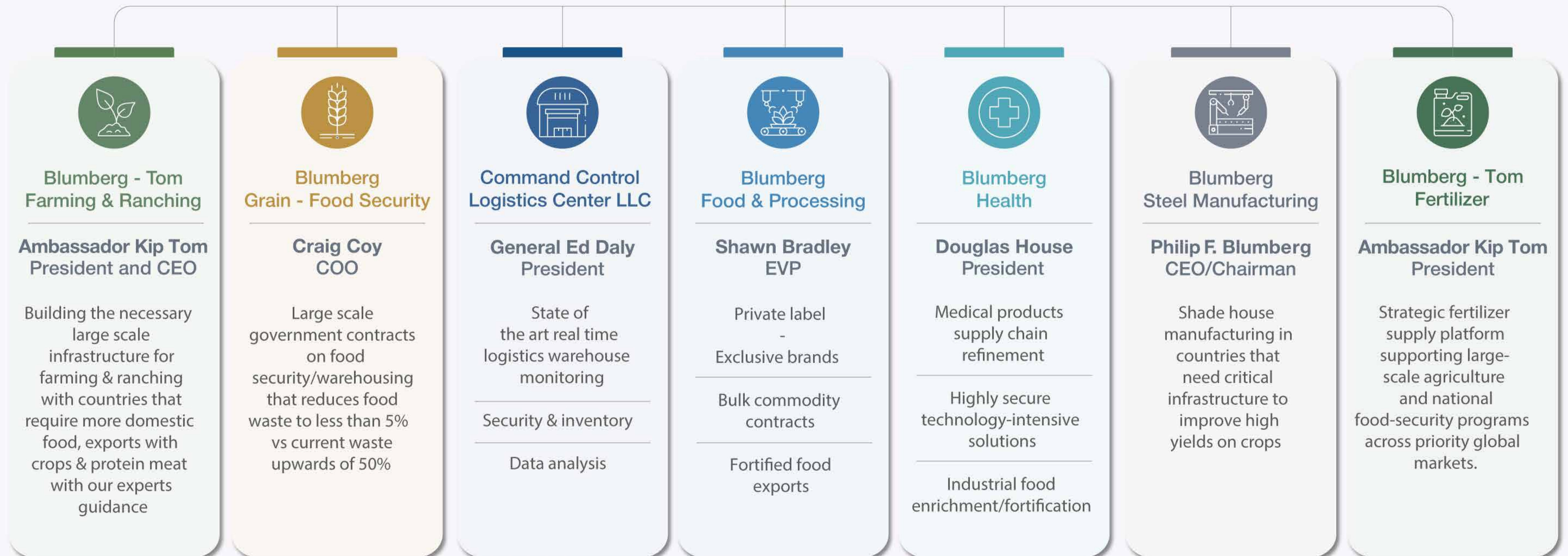


ORGANIZATIONAL CHART

BLUMBERG

PARTNERS

Philip F. Blumberg
CEO/Chairman



Blumberg Partners Executive Team & Advisors Biographies



Philip F. Blumberg Chairman & CEO

- Leader of the Blumberg Partners executive team
- Responsible for global business strategy, investments, capital allocation and global engagements

Background

- Founder of Blumberg Partners, the holding company for all Blumberg businesses
- Chairman & CEO - Blumberg Grain, the globally recognized leader in technology-intensive agriculture supply chain management solutions. Pioneered controlled atmosphere technology, an innovation that triples the life of produce and perishables compared to traditional cold-chain systems. Principal architect behind Egypt's 93-building, 3.2M-square-foot grain storage system, the world's largest
- Chairman & CEO - Blumberg Investment Funds
- Chairman & CEO - Blumberg Real Estate
- President & CEO - America Ventures, an institutional real estate investment fund company considered the top institutional fund in its class for 16 consecutive years.
- President - RealData Information Systems - real estate research and consulting firm

Selected Affiliations

- Chairman - Greater Miami Chamber of Commerce
- Chairman - Miami Free Trade Zone
- President's Advisory Group, US Chamber of Commerce
- Vice Chairman - US-Egypt Business Council
- Board of Governors - Florida Chamber of Commerce
- Board of Trustees - University of Miami
- Member of Orange Bowl Committee
- Board of Directors - Community Partnership for the Homeless
- Chairman of the Board for Americans for Veterans - a charity that assists disabled American veterans

Education

- BS - Honors in Business, University of North Carolina - Chapel Hill
 - MBA, Harvard Business School
-



Douglas W. House President, Blumberg Health

- Responsible for global operations, including project management and staffing, building robust, efficient and secure medical products supply chains
- Principal architect of bespoke solutions to complex issues impeding the performance of health products supply chains

Background

- Over 40 years' experience in the medical sector, including pharmaceuticals, biotech, medical devices, diagnostics (tests and capital equipment), services and computer systems. Responsibilities included strategy formulation and execution, project management, international product distribution, brand management, supply chain management, profit/loss and mergers & acquisitions.
- Spent over nine years in the Diagnostics Division of Abbott Laboratories where he earned two national performance awards and was a founding member of the team that launched the first HIV blood test in the US.
- Tenures at drug-maker Organon, Cambridge Biotech and medical device firm Cochlear. Responsibilities included product commercialization, customer service & support, regulatory and business development.

Education

- BA, University of North Carolina - Chapel Hill
 - MBA - Marketing/Finance, University of Southern California
-



Shawn J. Bradley

Executive Vice President, Global Food Security & Strategic Markets

- Responsible for the development and expansion of large-scale food security initiatives across global markets
- Strategic focus on integrated supply chains and food processing
- Responsible for the management of strategic partnerships, including contracts

Background

- More than three decades of senior leadership in food & beverage, distribution, logistics and consumer package goods. Responsibilities included national sales management, supply chain operations and strategic market development.
- 22-year career at Whole Foods Market responsible for fresh food sourcing and logistics.
- Tenures at Pressed Juicery, CLEAN Cause, Ripple Foods, Nestle Waters, Danone North America, Carrefour USA and C&S Wholesale Grocers.
- Extensive experience overseeing large purchasing and distribution operations, launching/scaling private-label brands, improving logistics efficiency and building strong relationships with major retailers including Whole Foods Market, Sprouts, H-E-B Publix, Trader Joe's and Natural Grocers.

Affiliations

- Served as Board Member and Chairman of Easter Seals Central Texas and Easter Seals National Board.
- Served as an advisor through the Global Solutions Institute, collaborating with Fulbright Scholars and former world leaders on food security and healthcare.
- Recipient of American Red Cross Service Award, invited guest speaker at Harvard MBA Program and United Nations International Sustainability Summit.

Education

- US Army Executive Officer
 - MBA - Innova University
-



Craig P. Coy

Vice-Chairman, interim COO and Advisory Board Member

- Responsible for operations, staffing, and projects overseeing teams of engineers, project managers and financial managers.
- Oversees the financial health, along with the Chairman, of Blumberg Partners
- Plays a leading role in client relations.

Background

- Over the past 40 years of senior executive management roles in the public and private sectors, nationally and internationally.
- Chief Executive Officer of the Massachusetts Port Authority during the aftermath of 9/11.
- CEO of HR Logic Inc. a \$1.7 billion business outsourcing services company.
- CEO of Command Security Corp, a national security services company.
- CEO of Prosegur USA, a subsidiary of Prosegur, an international security services company.
- COO of L-3 Homeland Security Group an international manufacturer of security systems.
- Wide-ranging executive responsibilities in the United States Coast Guard; the White House; the National Security Council; and Department of Justice.

Board of Directors

- CrossFuze Inc.
- Clear LLC
- U.S. Coast Guard Academy
- J. D'Addario and Company
- White House Fellows Alumni Foundation
- Massachusetts Red Cross
- New England Council

Education

- BS, US Coast Guard Academy
 - MBA, Harvard Business School
-



William (Bill) J Stewart, PE, CEM, CxA, CPP

Vice President and Chief Engineer

- Oversees all engineering, including design professionals.
- Serves as head project design manager and technical support for all warehouse construction and related systems.
- Responsible for design and technical support from concept through installation, commissioning and beneficial operation of cold chain systems, controlled atmosphere systems, and food processing systems.
- Holds Professional Engineering Licenses in nine States.

Background

- Has 40+ years of designing large capacity chillers and refrigeration equipment, mostly field-erected centrifugal chillers, using electric motors up to 13.2 kV, natural gas engines, natural gas turbines, steam turbines, and absorption chillers – steam and natural gas, chiller plants, design, and commissioning for worldwide installations.
- Project lead for building the largest grain storage system in the world in Egypt (90 warehouses, 3.2 million square feet).
- Lead design manager & on-site installation technical support for US Capital Chiller Plant Expansion Project serving the US Capitol Building, House and Senate Office Buildings, Library of Congress, US Supreme Court, Thurgood Marshal Judicial Center, Union Station and US Government Printing Office in Washington, DC.
- Past projects include work for the US Federal Government (NIH, NASA, Air Force, Army, Pentagon, FDIC, GSA, USDA-AMES, NIST), University of Texas, UCLA, University of Kentucky, UVA, Baylor, LSU, Northwestern University, University of Houston, NCSU, Yale, MIT, Denver International Airport, Minneapolis/St. Paul District Heating Plants, World Trade Center, PA Capitol Complex, City of Escondido, LAX and HIA.
- Healthcare sector projects include service providers Texas Medical Center, Houston, Kaiser Permanente, Methodist Hospitals in Houston & Indianapolis, Lenoir Memorial and New York Presbyterian Hospital as well as drug-makers DOW, Eli Lilly, Abbott Labs, GlaxoSmithKline, Bristol-Myers Squibb, Merck, and Pfizer.
- Commercial Projects for IBM, General Motors, META, Google, CNN, Chrysler Jefferson, DuPont, Honda, Kodak, Nationwide, Intel, Thermal Energy Corp - Houston.
- International projects include Islam University, English Channel Tunnel, Prophets Mosque, Hong Kong Exhibition Center, Petronas Towers, South Africa Gold Mines and petrochemical firms ARAMCO, SHELL, DOW, ADNOC. Cerveza Aguila, Columbia-Ammonia Refrigeration, Formosa Plastics, Taiwan, Ghana Seed Storage.

Affiliations

- Served as Board Member and Chairman of Easter Seals Central Texas and Easter Seals National Board.
- Served as an advisor through the Global Solutions Institute, collaborating with Fulbright Scholars and former world leaders on food security and healthcare.
- Recipient of American Red Cross Service Award, invited guest speaker at Harvard MBA Program and United Nations International Sustainability Summit.

Education

- BS - Mechanical Engineering, The Ohio State University
-



George P. Bush
Advisor

- Commissioner Bush serves as the CEO and Managing Partner of Pine Cove Strategies, drawing upon more than 30 years of executive experience in both government and business. Throughout his career, he has led high-profile initiatives, shaped strategic decision-making, and delivered impactful results for public and private sector clients alike.
 - Prior to co-founding the firm, Commissioner Bush served as the 28th Land Commissioner for the State of Texas where he led the largest housing recovery in State history in response to Hurricane Harvey, helping more than 60,000 victims rebuild their homes and their lives. As Chairman of the \$8.6 billion Permanent School Fund, he helped to generate record revenues for K-12 education through innovative administration and implemented prudent stewardship measures over 13 million acres of state lands and natural resources.
 - Prior to his election to statewide office, Commissioner Bush co-founded Pennybacker Capital, a Texas-based private equity fund, and he practiced corporate & securities law with a national law firm in Dallas. He also proudly served for a decade as an Intelligence Officer in the U.S. Navy Reserves, where he earned the Joint Service Commendation Medal, Navy Achievement Medal, Afghanistan Campaign Medal and Intel Warfare Designator pin in recognition of his service.
-



José Cancela
Advisor

José Cancela serves as President of Telemundo Station Group, NBCUniversal Local's Spanish-language media portfolio that's highlighted by Telemundo-owned stations in 31 markets across the U.S. and Puerto Rico, including in each of the Top 20 U.S. Hispanic TV markets.

- In this role, which he's held since January 2024, Cancela provides strategic and operational leadership across all areas of the business and oversees its executive team and station general managers. He also works closely with NBCUniversal Telemundo Enterprises.
 - Cancela is a media-industry veteran with more than 35 years of leadership experience, and more than four decades in the Spanish-language marketplace. Prior to his current position, Cancela spent nearly 12 years as President & General Manager of Telemundo Puerto Rico / WKAQ.
 - During his tenure with WKAQ, which began in 2012, Cancela oversaw continual advancement. His leadership led to significant growth in the station's news and entertainment content, expanding local programming from 15 hours a week in 2012 to more than 70 hours today.
 - Cancela's impact elevated WKAQ's relevance with audiences, value with advertisers, and overall competitive position, which greatly expanded its reach and profitability. Cancela also guided the station's community programs that support and serve residents across Puerto Rico.
 - Cancela joined WKAQ from KVEA / Telemundo 52 Los Angeles, where he was President & General Manager. Previously, he served as President of Radio Unica and Hispanic USA Inc., a marketing firm. He was also President & COO of Telemundo Station Group from 1992 to 1998.
 - Cancela began his career as a sales trainee for Miami's WLTV – eventually rising to lead the Univision station – after serving in the U.S. Air Force. He's the author of 'The Power of Business en Espanol: 7 Fundamental Keys to Unlocking the Potential of the Spanish-Language Market.' Civic Commitment: Cancela served as Chairman of the Public Health Trust as well as Chairman of the Greater Miami Chamber of Commerce and FACE (Facts About Cuban Exiles).
-



General (Retired) Edward M. Daly
President, Command Control Logistics Center LLC

- General (Retired) Edward M. Daly retired from the U.S. Army in 2023 after 36 years of honorable service. In his final assignment, he served as the 20th Commanding General of the U.S. Army Materiel Command. In this role, he led one of the Army's largest commands with 190,000 Military and Department of the Army Civilians and Contractors and was responsible for an annual budget of more than \$50B. As the U.S. Army's senior logistician, Ed led Army logistics worldwide, global foreign military sales, and initial materiel fielding efforts in support of Ukraine as well as the Army's Organic Industrial Base and Infrastructure Modernization initiatives.
 - Ed graduated from the United States Military Academy in 1987. He earned Master's Degrees in Business Administration from Gonzaga University and in Strategic Studies from the U.S. Army War College. He is the only career Logistics 4-Star General to graduate from the United States Military Academy at West Point since its founding in 1802. Throughout his nearly four decades of service, Ed served in assignments within Army units throughout the world and has had multiple combat tours in support of Operations DESERT SHIELD/STORM, IRAQI FREEDOM, and ENDURING FREEDOM (AFGHANISTAN). His awards and decorations include the Distinguished Service Medal, Legion of Merit, Bronze Star, Combat Action Badge, and Parachutist Badge. He is also a member of the U.S. Global Leadership Coalition's National Security Advisory Council (NSAC).
-



Kip Tom
President & CEO, Blumberg-Tom Farming
& Ranching | Fertilizer

- Ambassador Tom served as the United States Ambassador to the United Nations Agencies for Food and Agriculture and Chief of the United States Mission to the UN Agencies in Rome from 2019 to 2021. This role incorporated his representing the United States at the United Nations Agriculture and Food Agencies, the World Food Program, Food and Agriculture Organization, International Development Law Organization, International Finance and Development, and the Organization for the Unification of Private Law in Rome, Italy. He and his family own and operate Indiana-based Tom Farms which is involved in production operations in the US and Latin America, grain trading, processing and investing in agri-food technologies.
 - Ambassador Tom served as a member of the board of the Indiana Economic Development Corporation. He is involved in several philanthropic organizations focusing on food security and development issues domestically and globally. He has served as a trustee of the National 4-H Foundation and a member of the National Future Farmers of America Foundation Board of Directors. Ambassador Tom holds an advanced management certificate from Texas A&M in agriculture economics.
 - Ambassador Tom served as the United States Ambassador to the United Nations Agencies for Food and Agriculture and Chief of the United States Mission to the UN Agencies in Rome from 2019 to 2021. This role incorporated his representing the United States at the United Nations Agriculture and Food Agencies, the World Food Program, Food and Agriculture Organization, International Development Law Organization, International Finance and Development, and the Organization for the Unification of Private Law in Rome, Italy. He and his family own and operate Indiana-based Tom Farms which is involved in production operations in the US and Latin America, grain trading, processing and investing in agri-food technologies.
 - Ambassador Tom served as a member of the board of the Indiana Economic Development Corporation. He is involved in several philanthropic organizations focusing on food security and development issues domestically and globally. He has served as a trustee of the National 4-H Foundation and a member of the National Future Farmers of America Foundation Board of Directors. Ambassador Tom holds an advanced management certificate from Texas A&M in agriculture economics.
-



Johnny L. Winton
Advisor

- Mr. Winton has had an active career in the commercial real estate field for over 40 years. He has overseen a portfolio of commercial properties that comprised millions of square feet located in markets throughout the United States.
 - In 2011 Mr. Winton teamed up and invested with Armando Codina, Founder of Codina Partners out of Miami, Florida, to source value-add office opportunities in Dallas Texas. Mr. Winton was responsible for sourcing opportunities, leading the due-diligence team, developing the repositioning plan and ultimately serving as the asset manager for the assets purchased. During the period, affiliates of Codina Partners purchased over 1,000,000 square feet of value-add office in Dallas.
 - In 2000, Mr. Winton ran for office in the city of Miami against an incumbent that had been in office for 29 years and was believed to be unbeatable. Mr. Winton won by garnering 54% of the vote in the first round. He went on to become Chairman of the Commission and led the effort that launched the largest development wave within the greater downtown area the city had ever seen.
 - Mr. Winton founded MJA Capital, a private equity vehicle utilized for the purchase of value-add office properties in select markets in the Southeast and Southwest United States, in 2008.
 - Prior to founding MJA Capital, Mr. Winton was President of the Blumberg Property Fund. The Blumberg Property Fund was a \$1.5 billion fund focused on value-add office properties throughout the United States. In his role as president, Mr. Winton helped develop the strategy to liquidate all fund assets between 2006 and 2008. That decision led to an annualized 14.6% return over the eight-year life of the fund. The fund was one of the few open-end funds in the United States that chose to liquidate at the market peak, thereby generating superior returns for investors. Mr. Winton was the chairman of the fund's Asset Management Committee and a member of the Investment Committee.
 - In 1985, Mr. Winton founded WynCo Realty Partners, a full-service, commercial real estate investment and service company providing management, leasing, construction management, asset management and due diligence to third party clients and limited partnerships controlled by Mr. Winton. At its height, WynCo had direct management and asset management for millions of square feet of properties located across the United States, which included office, Industrial, Retail and Health Care assets. WynCo was sold to Blumberg Capital in 2006.
-