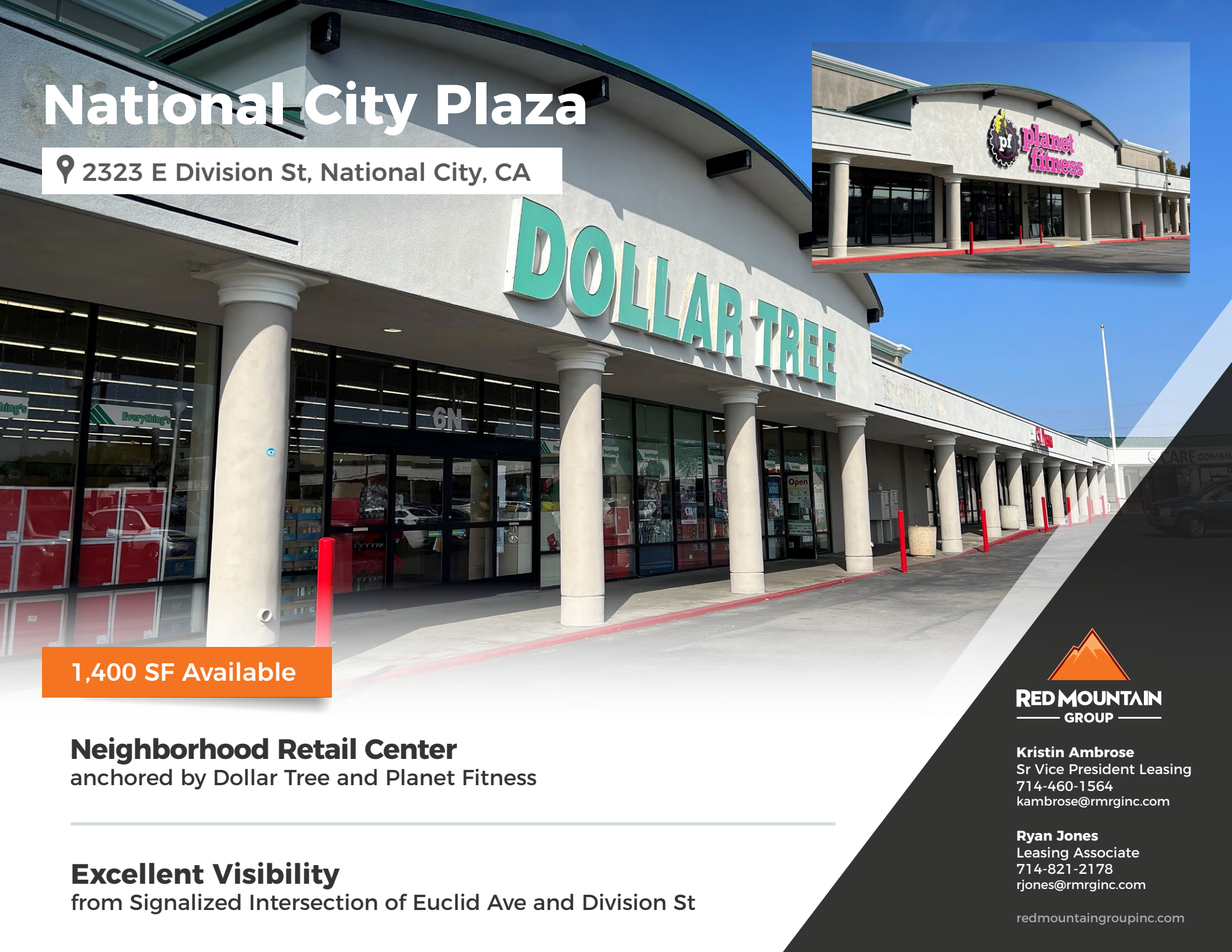


National City Plaza

📍 2323 E Division St, National City, CA



1,400 SF Available

Neighborhood Retail Center

anchored by Dollar Tree and Planet Fitness

Excellent Visibility

from Signalized Intersection of Euclid Ave and Division St



RED MOUNTAIN
GROUP

Kristin Ambrose
Sr Vice President Leasing
714-460-1564
kambrose@rmrginc.com

Ryan Jones
Leasing Associate
714-821-2178
rjones@rmrginc.com

redmountaingroupinc.com

For Lease

1,400 SF Space

Property Highlights

- **Close proximity to I-805**
and other neighborhood retail centers
- **Drive-thru opportunity**
- **Densely populated trade area**
- **Great in-fill location in San Diego**

Demos



| RADIUS | POPULATION | MED HH INCOME |
|--------|------------|---------------|
| 1 MILE | 37,976 | \$70,635 |
| 3 MILE | 228,976 | \$78,853 |
| 5 MILE | 571,397 | \$84,771 |

Source: Applied Geographic Solutions 2024



Major Tenants



DOLLAR TREE



CSL Plasma

Site Plan



National City Plaza
2323 E Division St, National City, CA



redmountaingroupinc.com

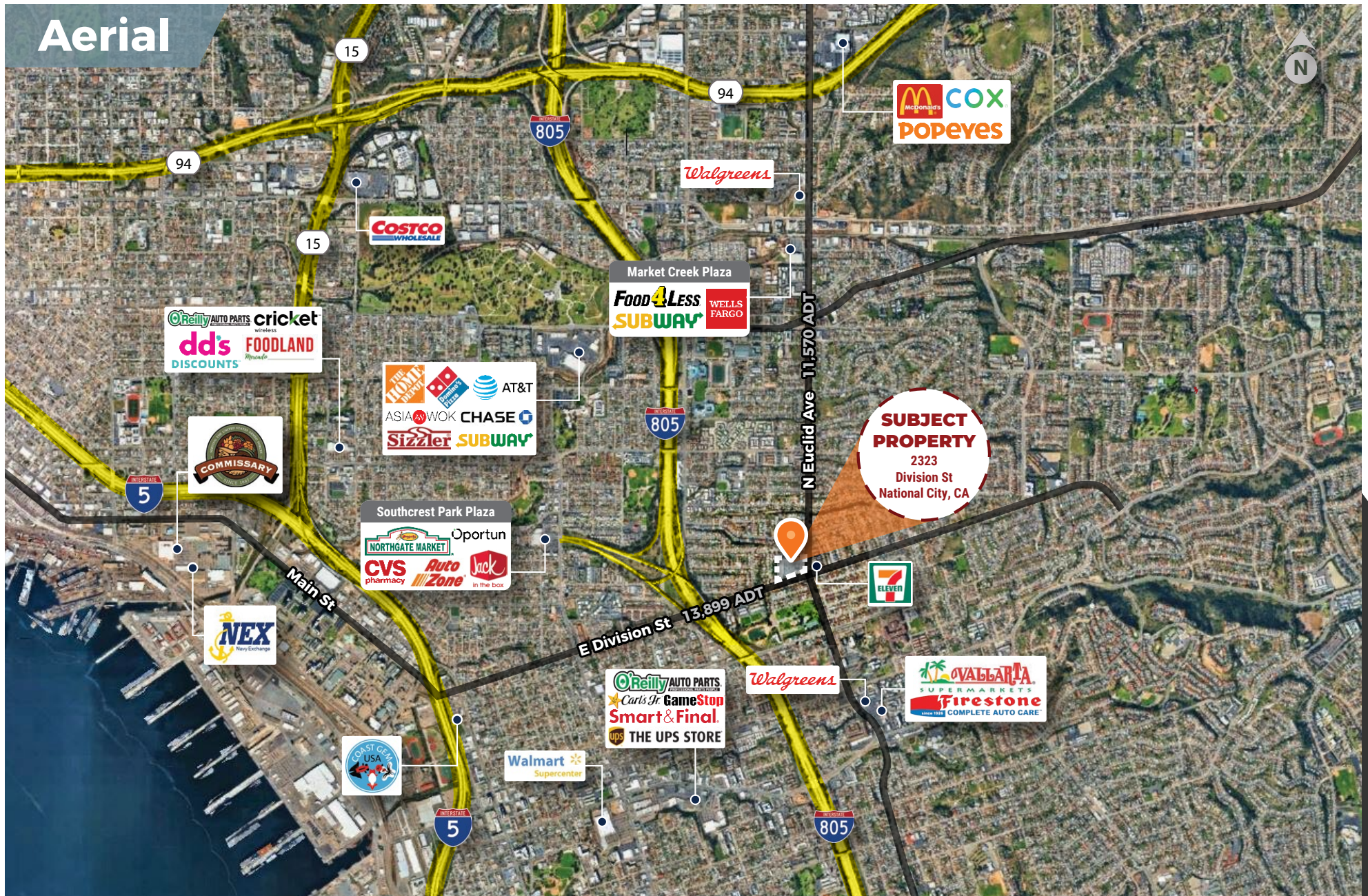
Kristin Ambrose
Sr Vice President Leasing
714-460-1564
kambrose@rmrginc.com

Ryan Jones
Leasing Associate
714-821-2178
rjones@rmrginc.com

1234 E 17th Street, Santa Ana, CA 92701



Aerial



National City Plaza
2323 E Division St, National City, CA



redmountaingroupinc.com

Kristin Ambrose
Sr Vice President Leasing
714-460-1564
kambrose@rmrginc.com

Ryan Jones
Leasing Associate
714-821-2178
rjones@rmrginc.com

1234 E 17th Street, Santa Ana, CA 92701

