



Space Profile for

Unit: #645

Area: 1536 sq ft

Address

645 N. Westhill Blvd.

Appleton, WI 54914



4300 West Cypress St., Suite 160

Tampa, FL, 33607

Westhill Plaza



RED MOUNTAIN GROUP
 1234 East 17th Street
 Santa Ana, CA 92701

Unit # 645
Ground Floor
+/- 1,536 SF

Square footage shown was measured on-site and adheres to BOMA standards.

Width
25'-3"

Depth
80'-2"

Revisions

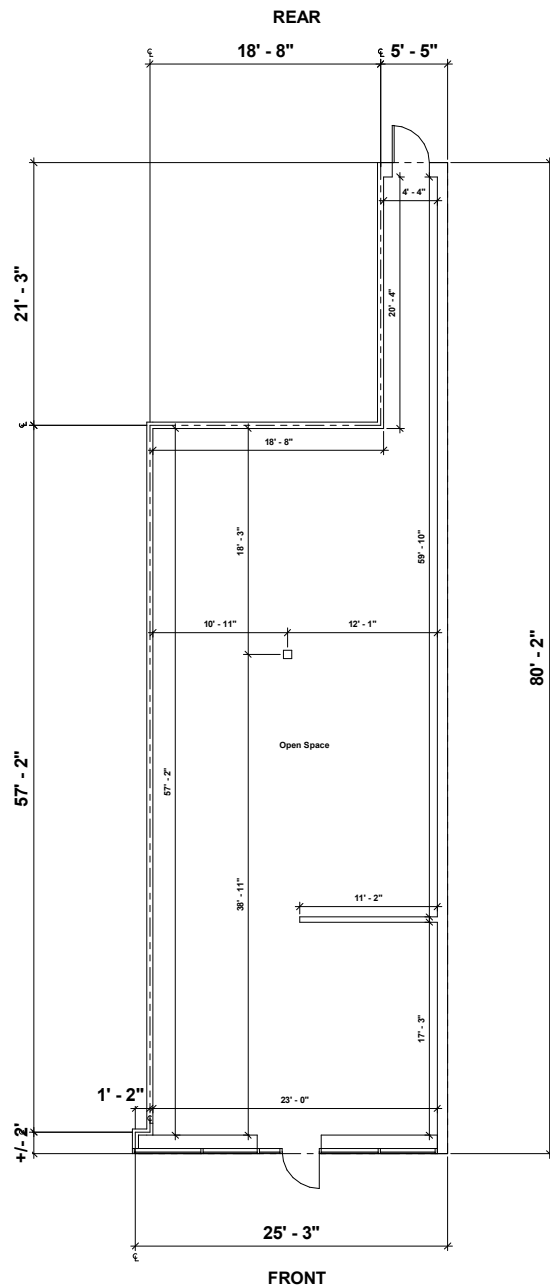
Floor Plan
 Prepared 03/27/2026
 Unit # 645

Plans Produced by:
ID PLANS

4300 West Cypress Street, Suite 160
 Tampa, FL 33607
 Phone: (866) 657-2645
 idplans.com

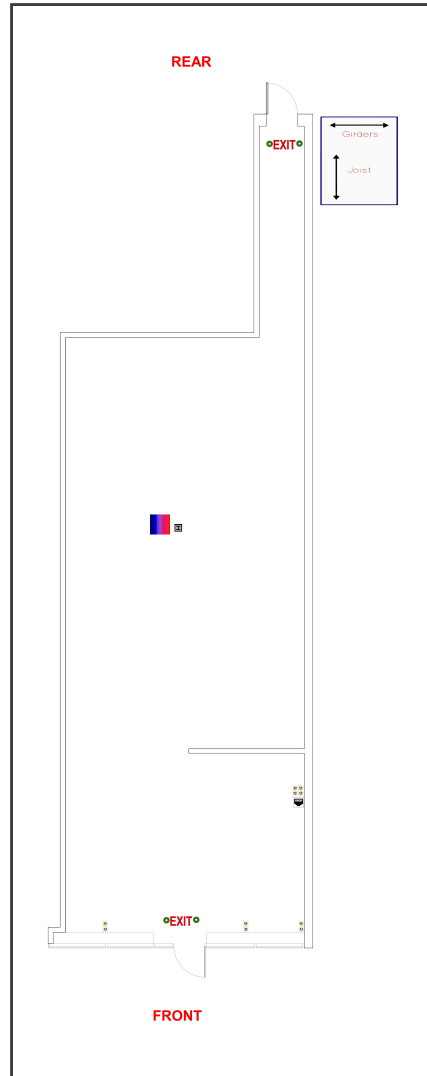


© 2026
 Floor plan is for general use and purposes only. ID Plans does not guarantee the accuracy or validity of provided information. Measurements are not intended to be architecturally used for construction purposes or accepted as replacement for documents, drawings, or media intended or claimed to be architecturally accurate and be binding. The client hereby has and reserves the right and responsibility to verify, change or alter the provided information at any time for any reason.



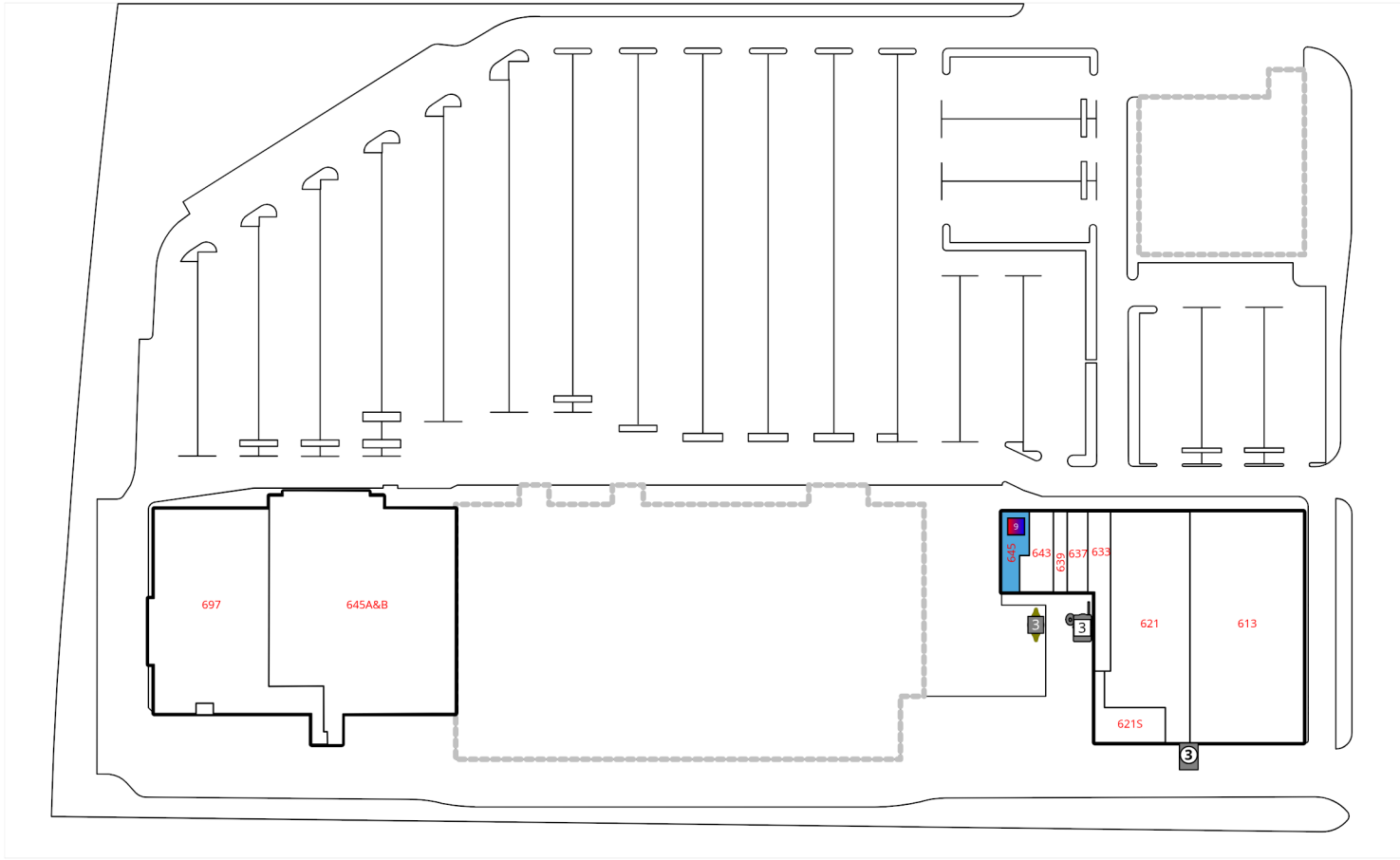
A1 MAIN FLOOR





Legend

	Tenant Water Meter		Air Handler		Rectangular Column		Disconnect
	Sub Water Meter		HVAC Unit		Appliance Outlet		Freezer
	House Water Meter		Blank Air Handler		Outlet		Can Light
	Blank Water Meter		Blank HVAC Unit		Service Panel		Recessed Light
	Tenant Gas Meter		Vertical Fire Riser		Water Heater		Ceiling Fan w/ Light
	Sub Gas Meter		Horizontal Fire Riser		RJ45		Ceiling Fan
	House Gas Meter		Fire Sprinkler		Backflow Preventer		Diffuser
	Blank Gas Meter		Fire Alarm Pull		Water Fountain		Air Vent
	Tenant Electric Meter		Fire Alarm		Grease Trap		Emergency Light
	Sub Electric Meter		Fire Extinguisher		Step Down Transformer		4 Bulb Fluorescent
	House Electric Meter		Thermostat		Floor Drain		2 Bulb Fluorescent
	Blank Electric Meter		Fire Alarm Control Panel		Tankless Water Heater		1 Bulb Fluorescent





Space Overview

Overview	Actual Square Footage	Measured Depth of Space
	1536 SQFT	80' 0"

Thickness	Front Wall	Rear Wall	Left Wall	Right Wall
	1' 6"	1' 2"	0' 6"	0' 10"

Flooring	Concrete	Carpet	Tile	Other	Unit	Total
	1177.35 SQFT		220.51 SQFT		1536 SQFT	1397.86 SQFT



Ceiling Information	Height From Floor To Ceiling	Height From Floor To Bottom Of Deck	Height From Floor To Bottom Of Joist	Height From Floor To Bottom Of Girder
	Front: 9' 0"	Front: 15' 6" Back: 14' 11"	Front: 13' 4" Back: 12' 10"	

Ceiling Information Cont.	Clear Ceiling Height
	9' 8"



Mechanical

HVAC	Reference	Manufacturer	Model	Serial	Tonnage	Year	Notes
	9	BRYANT	582JP05A115A2A0AAA	0917C64965	4	2017	

Not Present	Assets Not Present
	Air Handler



Electric

Disconnect	Reference	Amps	Location	UL Number	Manufacturer	Handle or Breaker	Notes
	1	100	Rear Exterior	Not Listed	Square D	Handle	

Electric Meter	Reference	Meter #	Location	Amps	Notes
	3	PNXZT44135	Rear Exterior		

Not Present	Assets Not Present
	Service Panel
	Step-Down Transformer

IDPlans does not provide an Ampacity Report



Plumbing

Not Present	Assets Not Present
	Water Heater
	Water Fountains
	Backflows

Water Meter	Reference	Meter #	Location	Meter Size	Meter Type	Notes
	3	78869702	Utility Room	3/4 inch	Tenant	



Waste

Not Present	Assets Not Present
	Grease Trap
	Grease Container



Fire

Not Present	Assets Not Present
	Fire Extinguisher
	Fire Alarm Control Panel

Sprinkler Heads	Sprinkler Type	Sprinkler Heads Present	Sprinklers Located in Space	Riser Located in Space	Additional Information
				Yes	No



Gas

Gas Meter	Reference	Meter #	Location	Size	Notes
	3	1783569 / 896231	Rear Exterior	1 1/4 inch	Utility company will not confirm name on account.



Room

Not Present	Assets Not Present
	Restroom