

LOMITA

100% LEASED

2155 Pacific Coast Hwy | Lomita, CA



BRENDA BENTER
SR VICE PRESIDENT LEASING
bbenter@rmrginc.com | 714-460-1500

JAI DYN PHONRATH
LEASING ASSOCIATE
jphonrath@rmrginc.com | 714-821-2172



SITE PLAN

LOMITA



#	TENANT
2155	Grocery Outlet
2155-B	AMVETS

BRENDA BENTER
 SR VICE PRESIDENT LEASING
 bbenter@rmrginc.com | 714-460-1500

JAIDYN PHONRATH
 LEASING ASSOCIATE
 jphonrath@rmrginc.com | 714-821-2172



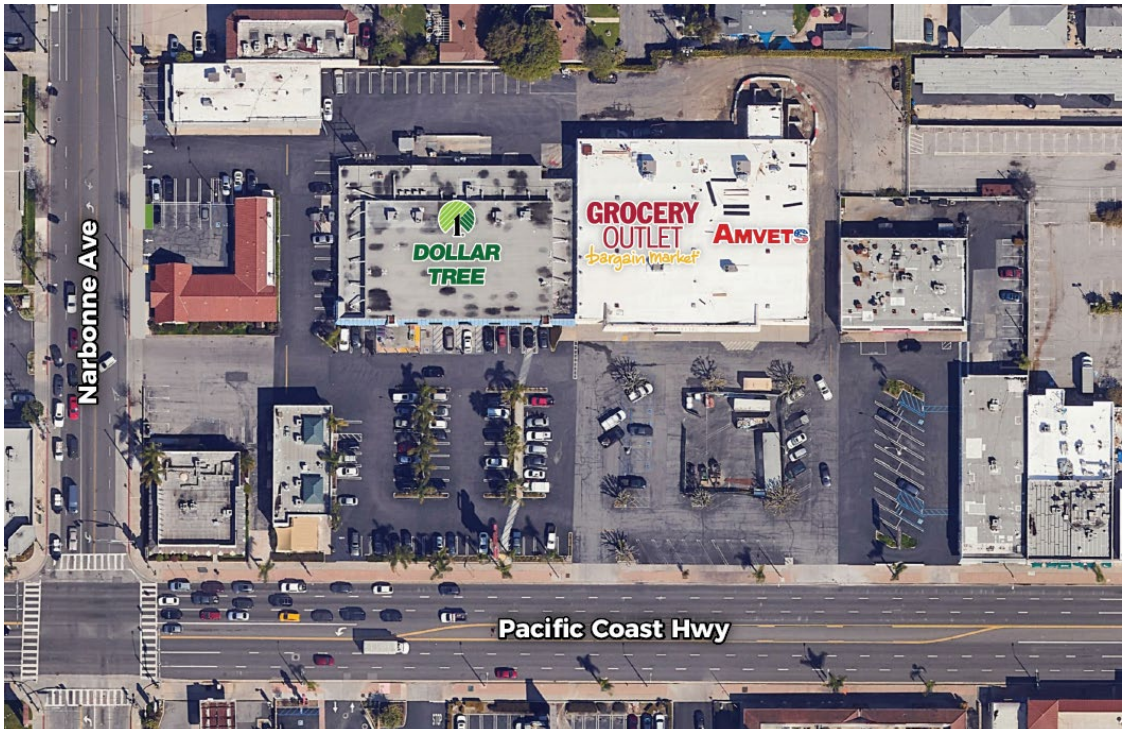



www.redmountaingroupinc.com

RED MOUNTAIN
 GROUP

AREA INFO

LOMITA







100% LEASED

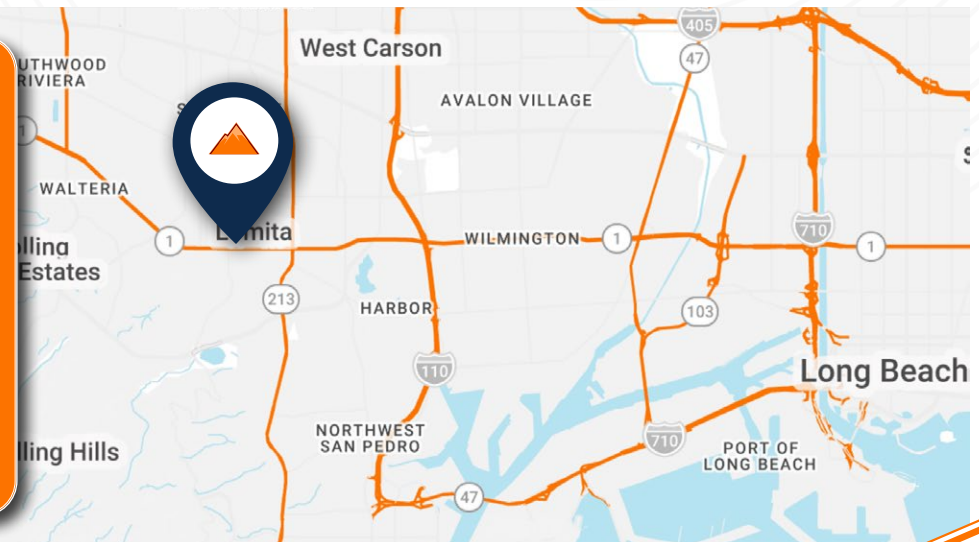
Located at the Intersection Narbourne Avenue and a Highly Traveled Portion of Pacific Coast Highway with an AADT count of more than 59,150

Located at the foot of Palos Verdes Estates and Rolling Hills Estates

NEARBY TENANTS:



	 POPULATION	 DAYTIME POPULATION	 TOTAL HOUSEHOLDS	 AVG HH INCOME
1 Mile	27,740	17,004	11,004	\$131,937
3 Miles	184,973	133,254	67,374	\$152,171
5 Miles	440,831	351,708	161,386	\$158,881



BRENDA BENTER
 SR VICE PRESIDENT LEASING
 bbenter@rmrginc.com | 714-460-1500

JAIDYN PHONRATH
 LEASING ASSOCIATE
 jphonrath@rmrginc.com | 714-821-2172






www.redmountaingroupinc.com

RED MOUNTAIN GROUP

AREA MAP



SUBJECT PROPERTY
 2155 Pacific Coast Hwy
 Lomita, CA

BRENDA BENTER
 SR VICE PRESIDENT LEASING
 bbenter@rmrginc.com | 714-460-1500

JAI DYN PHONRATH
 LEASING ASSOCIATE
 jphonrath@rmrginc.com | 714-821-2172



www.redmountaingroupinc.com

