

METaverse

911 

HOLOBOX

Life-Sized Holographic Display

HoloBox is a commercial-grade holographic display system that renders life-sized, photorealistic holograms inside a transparent optical enclosure. It creates the optical illusion that a real person, brand ambassador, or AI-powered agent is physically present — producing an immediate, unmistakable impact on anyone who encounters it.

The Challenge & The Solution

The Challenge

Every enterprise faces the same fundamental tension: the people who matter most — senior leaders, subject matter experts, brand ambassadors, customer service specialists — **cannot be everywhere they are needed**, at the scale and consistency that modern organisations demand.

Traditional substitutes — video screens, printed panels, digital signage, virtual meeting links — fail to create genuine human presence. **They are watched, not engaged with.**

The Solution

HoloBox delivers genuine human presence — at life size, with voice, with movement, and now with AI-powered intelligence — in a self-contained, commercially deployable unit.

Deploy your CEO at every location simultaneously. Staff your bank branch reception with an AI-powered holographic financial advisor available 24 hours a day, 7 days a week.



Four Ways HoloBox Delivers Presence

01 — Pre-Recorded Leadership Message

Record once — deploy everywhere. Works fully offline without any internet connection. Ideal for CEO messages and brand ambassadors.



02 — Touch-Based Application

Interactive Application for the Product Showcase. Visitors can know about your product and services in a more intuitive Manner.



03 — AI Avatar — Agentic Intelligence

Open-ended conversations powered by AI trained on your knowledge base. Available 24/7 for customer service and guidance.



04 — Live Holographic Streaming

Real-time telepresence. Leadership appears life-sized at any location without traveling. Up to 2K resolution.



Industry Applications



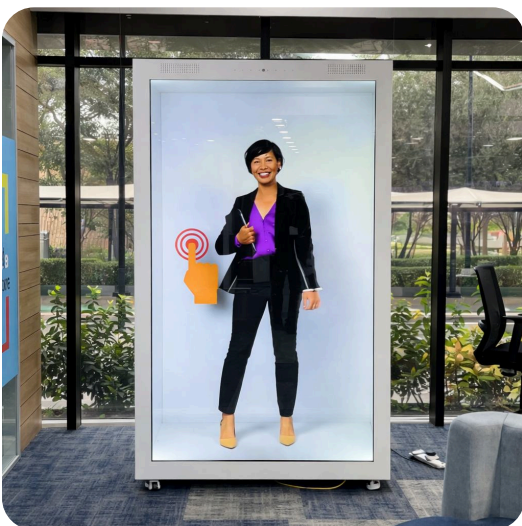
Banking & Financial Services

AI-powered HoloBox financial advisors provide always-available guidance on mortgages, investment products, and account services. Branch reception units handle wayfinding and basic queries.

After-Hours Service

Product Guidance

Branch Reception



Enterprise Corporate

Leadership presence at scale without travel. Corporate reception units create premium first impressions. Experience centers showcase innovation. L&D AI advisors support onboarding and compliance.

Reception Experience

All-Hands Meetings

L&D Training



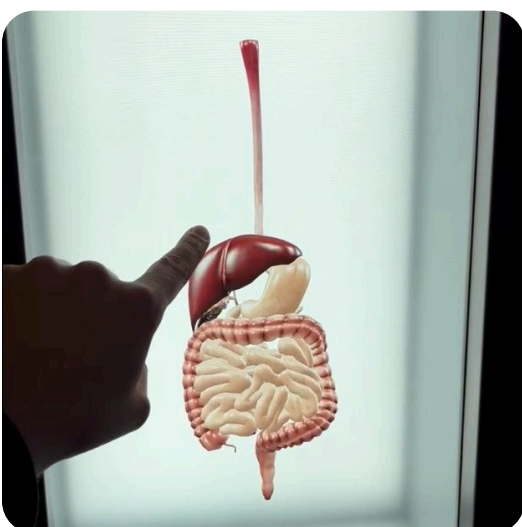
Manufacturing & Industrial

AI safety advisors deliver consistent safety briefings at production area entrances. Shopfloor training for equipment operation. Leadership communications to shift workers. Visitor reception for clients and prospects.

Safety Briefings

Training

Dealer Network



Healthcare & Hospitals

AI patient hosts provide wayfinding and check-in guidance. Pre-procedure information delivery in waiting areas. Remote specialist consultations via live streaming. Staff training for clinical protocols.

Patient Reception

Pre-Procedure Info

Remote Consultations



Retail & Hospitality

Brand ambassadors at store entrances create premium first impressions. AI product advisors provide brand storytelling and product discovery. New collection launches. AI concierge services in hotel lobbies.

Brand Welcome

Product Discovery

Concierge



Sales Representatives

Life-sized holographic sales advisor at every customer touchpoint — guiding prospects through products, handling objections, and qualifying leads around the clock. Consistent, high-impact selling at every location, without adding headcount.

Lead Qualification

Product Walkthrough

After-Hours Sales



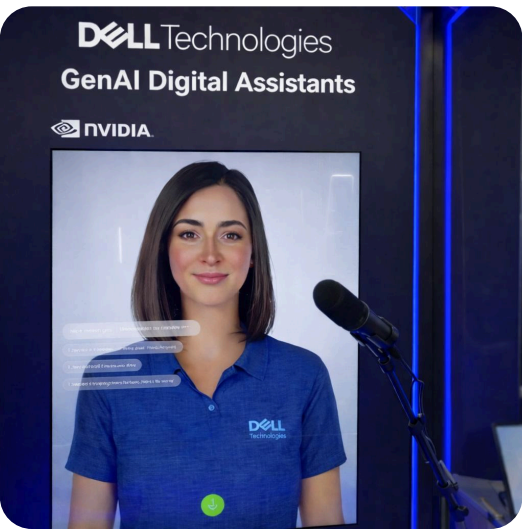
Insurance Companies

AI-powered HoloBox advisors explain policies, coverage, and claims in a natural, human-like interaction — reducing wait times and freeing human agents for complex cases. Available 24/7 across every branch.

Policy Guidance

Claims Assistance

Branch Reception



Company Onboarding & Training

Replace generic induction videos with a life-sized holographic trainer delivering consistent onboarding across every site — covering culture, compliance, and role-specific processes while reducing HR workload.

New Joiner Induction

Compliance Training

Multi-Site Rollout



Innovation Heads & L&D

Give L&D and Innovation leaders a flagship tool that brings learning to life. Deploy holographic instructors for skill-building, leadership development, and innovation showcases that static screens cannot replicate.

L&D Programmes

Innovation Showcase

Leadership Development



GCC & Gulf Enterprise

HoloBox projects leadership presence and brand authority across Gulf locations without travel. Bilingual AI ambassadors in Arabic and English support Vision 2030 transformation agendas with a bold, futuristic impact.

Arabic AI Advisor

Leadership Presence

Smart City Activation

WHERE CAN HOLOBOX BE USED?

Entrance of the Exhibit

Positioned to stop attendees in their tracks. Projects leadership messages or holographic greeters to increase booth traffic.

Product Demo Zones

Simulations of products in 3D exploded views facilitate deep understanding of complex items.

Brand Activation Area

A dedicated spot for visitors to record experiences with the hologram and share on social media.

Product Launching Area

Innovative 3D reveals for new products giving the launch a futuristic feel.

Corporate Experience Zone

A premier way to communicate important leadership or brand messages in reception areas.

Training & HR Pavilions

Ideal for onboarding videos, safety instructions, or virtual presenters in educational contexts.



Why HoloBox Is Categorically Different

A large-format screen is watched. A HoloBox is engaged with.

Feature	Traditional Displays	HoloBox
Visual Format	Flat 2D video on a screen	Life-sized hologram in 3D space
Attention Level	Medium — competes with surroundings	Very high — stops people
Interactivity	One-way content delivery	Two-way: touch or AI conversation
AI Integration	Not available	Full Agentic AI capabilities
Operating Hours	On during staffed hours	Continuous — 24/7

SPECIFICATIONS

Product Range

1-Foot HoloBox (30 cm)

Desktop & counter deployments

3-Foot HoloBox (90 cm)

Waist-to-head presentations

5-Foot HoloBox (152 cm)

Near-life-sized displays

7-Foot HoloBox (206 cm)

Full life-sized — flagship unit

Display Resolution: **4K (4096 × 3840)**

Audio System: **Dual 80W HiFi**

Touchscreen: **22" Interactive**

Power: **<40W operational**

AGENTIC AI

Advanced AI Capability

The AI Avatar is an autonomous agent that perceives, reasons, and responds in real-time through a life-sized holographic figure.

- ✓ Answer open-ended, unpredicted questions from your knowledge base
- ✓ Conduct multi-turn conversations with logical flow
- ✓ Available 24/7 across multiple locations simultaneously
- ✓ Log every interaction for analysis and compliance
- ✓ Operate in multiple languages for international environments
- ✓ Improve continuously with every interaction

Enterprise Applications:

Bank AI Financial Advisor • Corporate AI Receptionist • Hospital AI Patient Host • Manufacturing AI Safety Advisor • Retail AI Brand Consultant



Capgemini

Sector: IT Services & Consulting

Solution: 7-Foot HoloBox — Multi-Use Case Enterprise Deployment

Locations: Mumbai · Hyderabad (SEZ Sites)



The value delivered:

Installed a 7-foot HoloBox at Capgemini's Mumbai and Hyderabad locations, configured to support a range of enterprise use cases: live streaming of Capgemini leadership from France and other India locations directly into the experience centres, product showcase content, 3D application demonstrations, and client briefing presentations. The HoloBox functioned as the centrepiece of each experience centre — the technology that visitors remembered and referenced in subsequent conversations.



**MARUTI
SUZUKI**

Maruti Suzuki India Ltd.

Sector: Automotive OEM

Solution: HoloBox AI Avatar — Stage Deployment + Engagement Zone

Event: MQFC 2.0 — Dealer Network Convention



The value delivered:

Deployed a HoloBox AI avatar — trained comprehensively on Maruti Suzuki's product, sustainability, and brand content — in two phases. First, on the main convention stage in front of all 600 representatives, demonstrating the technology's capability in a high-visibility, high-stakes environment. Then, the same HoloBox was redeployed to a dedicated engagement zone where dealership professionals could interact 1:1 with the AI avatar across automobile features, sustainability credentials, and corporate strategy — in both English and Japanese, without requiring any human intermediary.



**IDFC FIRST
Bank**

IDFC First Bank

Sector: Finance Solution: HoloBox



The value delivered:

They launched India's first AI-Powered Hologram beaming the legendary Amitabh Bachchan at their top branches. With touch capability, it allows customers to interact with the avatar of Bachchan ji and learn about the banks' products and services like Zero Fee Banking, Monthly Interest Credits, Mobile Banking, and Current Account BRAVO.

PRODUCT SPECIFICATION

Product

7-Foot HoloBox units (86" display)

for optimal visibility and visual impact in both client-facing and employee-facing environments.

Technical Specifications

Display Resolution	4K (4096 × 3840 pixels)
Dimensions	206 cm (H) × 140 cm (W) × 60 cm (D)
Display Area	86" Diagonal
Audio System	Dual 80W HiFi front-facing speakers
Power Consumption	<40W operational; <0.5W standby
Connectivity	Ethernet, WiFi, 4G-ready, HDMI, USB
Touchscreen	22" Interactive Overlay (Included)



Our Offices



Immersive Experience Centre

Noida, India

India's first Metaverse Experience Centre, where over 300 CIOs and industry leaders have explored immersive technology. Serves as our global showcase and proof-of-concept facility.



Immersive Experience Centre

United Kingdom

Office 101, Building 220 Wharfedale Road, Winnersh Triangle, Wokingham RG41 5TP
Our UK base is your invitation to experience the full Metaverse911 portfolio in person — AR, VR, MR, holographic hardware, and AI solutions



XR Solutions Design Centre

Noida (NCR), India

Our core design and development operation, staffed by 35+ immersive technology specialists. Led by a VP Technology with 25+ years of experience in extended reality across the UK, Europe, and Asia.



XR Fabrication Hub

Zirakpur (Chandigarh), India

Our in-house manufacturing facility for holographic hardware — HoloBox, HoloFan, touch screen displays, and 15+ additional hardware products. Manufacturing in-house ensures quality control and competitive lead times for UK Dev.