

# Kumpula9





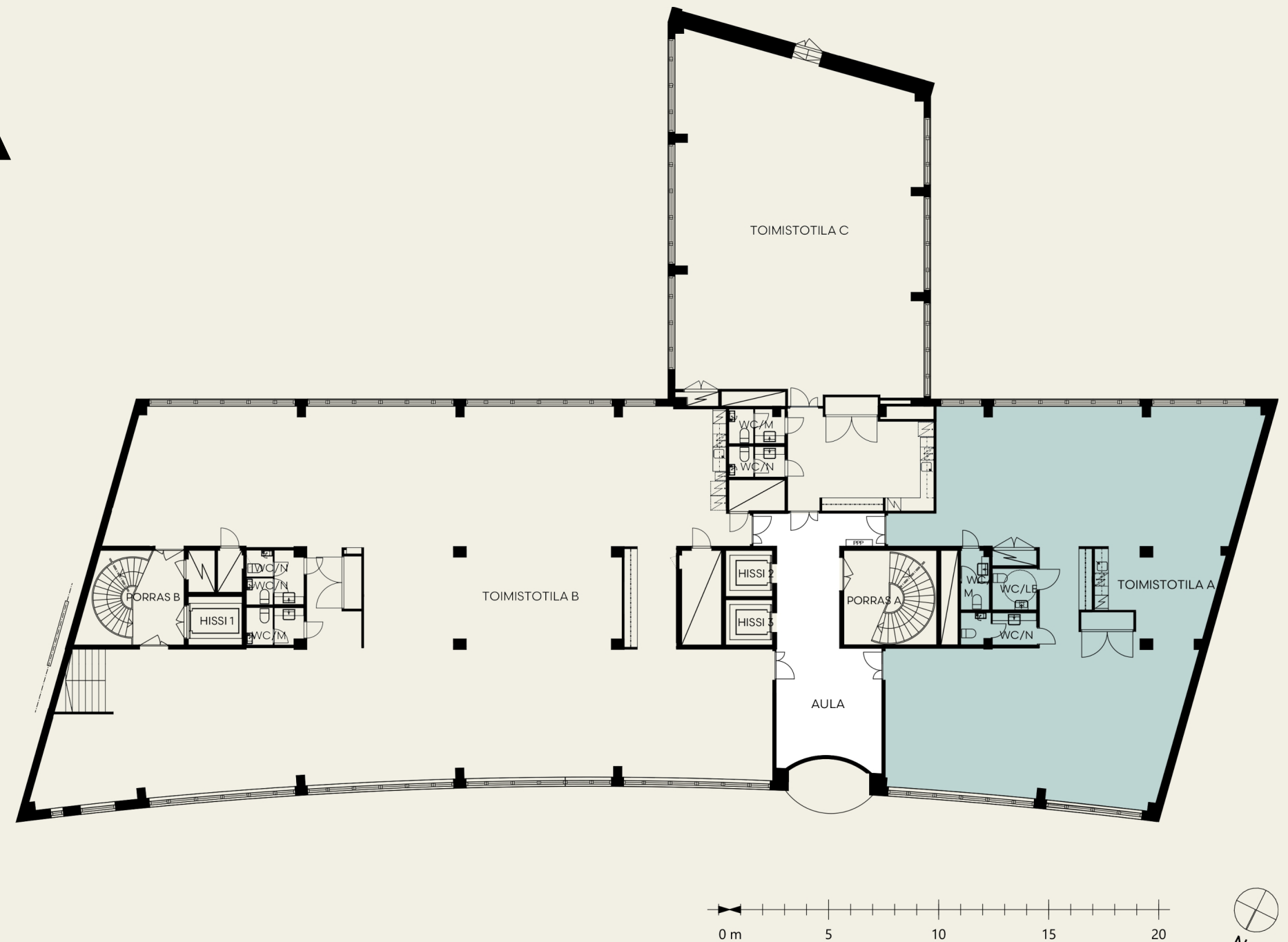
# Spaces for changing needs

The floor plans at Kumpula9 offer versatile and flexible possibilities for all kinds of needs. Choose from three different office floor units – or rent an entire floor. In addition to the building's efficient and functional facilities, Kumpula9's benefits

include the the great variety of services in the dynamic Vallila area, with excellent transportation connections to everywhere in the Helsinki region. Plus, everything is topped off with lush and green park views towards the Pasila district.

# Office space A

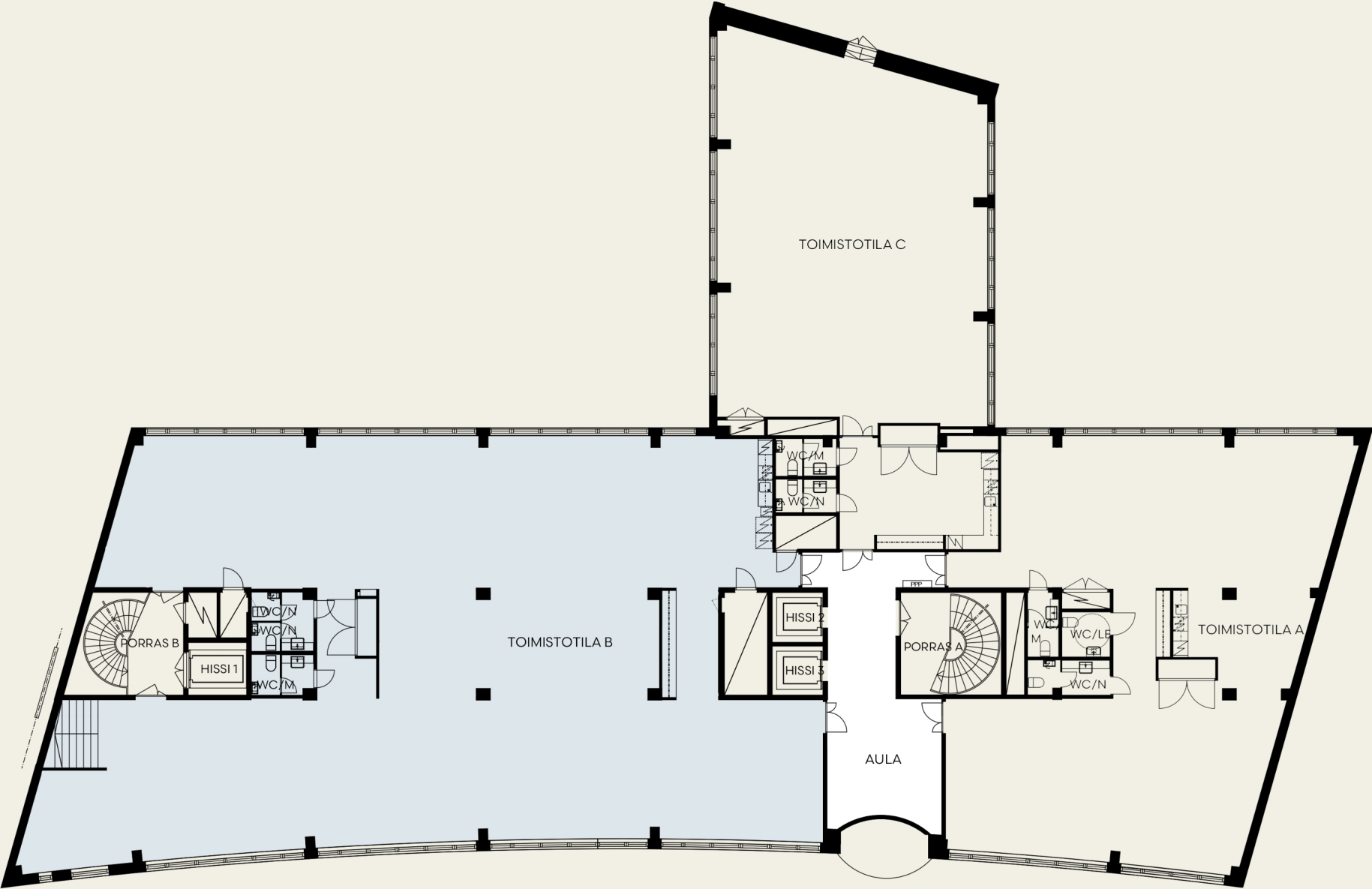
245 m<sup>2</sup>    €4,300 - 4,600 /month    Floors 2-6



Choose from three different office space units – or take over an entire floor. You can also choose your preferred interior style from our ready-made options.

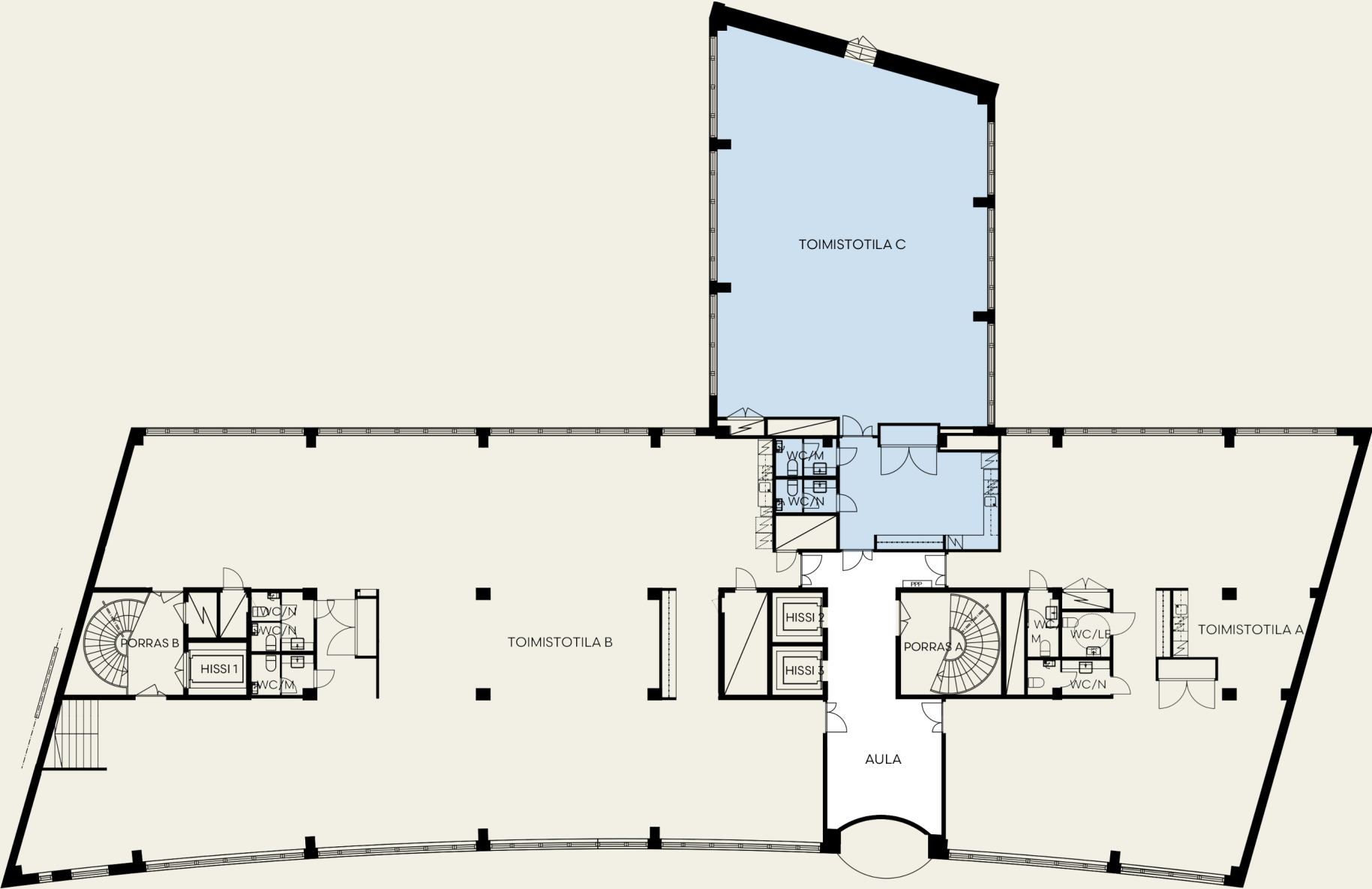
# Office space B

476 m<sup>2</sup>    €8,700 - 9,000 € /month    Floors 2-6



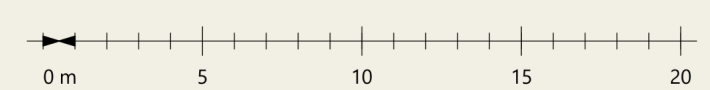
# Office space C

210 m<sup>2</sup>    €3,800-4 200 /month    Floors 2-6



# The whole floor

950 m<sup>2</sup>    €16,500 - 18,000 /month    Floors 2-6







Kumpula9