

# AARK-1M

## AUTO REF-KERATOMETER



Accuracy • User Friendly • Touch Screen

Diameter Measurement of Cornea & Pupil

- High Speed Thermal Printer
- Motorized Chinrest

# OPERATIONAL CONVENIENCE SUPPORTED BY ADVANCED TECHNOLOGY

## User friendly design

### 7-inch Touch Screen with Tilttable Colour LCD



The **AARK-1M** is fully operated through a 7-inch Touch Screen with Tilttable Colour LCD, It allows user to perform easier & more reliable operation. The Tilting function offers easy operation even for a standing operator.

### Joystick for Easy operation

**AARK-1M** uses a multidirectional Joystick for extremely smooth without any strain on hand. Alignment and measurement can be performed with a one handed operation. The control keys themselves feature a new, easy-to-press design that provides a greater level of comfort for virtually any user.



### One Touch Lock



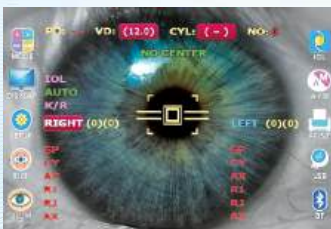
The main body can be fixed with the advanced one-touch lock. The press type locking mechanism will ensure a firm locking of the upper stage.

### Bluetooth Facility

The unique Bluetooth facility will help **AARK-1M** to transfer measurement data to any external Bluetooth enabled device like Mobile phone, Personal Computers & Other medical devices etc.,



### IOL Mode



After redesigning the whole system and making the improvement, even the cataract and IOL implanted patient can be measured.

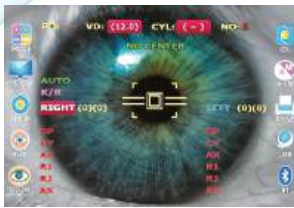
### Retro illumination & Anterior Segment Photography-Imaging

This is a very special feature which allows the user to take photographs of eyes with cataract. This helps in counseling the patient for further procedures.



## Reliable Measurement

### Refractometry & Keratometry Measurements



**AARK-1M** gives a wide dioptric measurement range from -25D to +25D for refractometry in steps of 0.12 and 0.25D. The radius of curvature for Keratometry is from 5.0 mm to 10.2 mm in steps of 0.05, 0.12 and 0.25D. The convenient operation allows us for immediate validation of results.

### CLBC (Contact Lens Base Curve)



Base curve of hard contact lens can be measured using contact lens holder on the back of the model eye. You can inspect the lens and distinguish between the right and left lenses.

### Measurement of Cornea & Pupil using Size mode



Measurement can be done easily by moving the two cursors on the display to the boundary of Cornea or pupil. This is useful for deciding the diameter of a contact Lens and for other Contact Lens fitting practices.

### Display Screen



Display screen will be used for displaying the stored data (maximum 10 data for each eye). REF, KER and CLBC data on the screen.

### Automatic PD Measurement

The pupil distance is automatically measured and displayed after refraction measurement of both eyes is performed.

### Auto Power save

To conserve energy and prevent any built-up of heat from electronic circuitry, the instrument incorporates an automated function to shut down the instrument when left unused for more than 5 minutes.

## Improved Functionality

### Motorized Chinrest



**AARK-1M** offers a motorized chinrest which will allow the operator to align the examinee's eye with the eye mark by just pressing the up/down buttons.

### Faster Printouts



Simply touch the print icon or press the Print button the built-in printer can immediately give us a complete print out of the test results.

### Colour Photo Target



A beautiful scenic color photo target will allow the examinee to be in a relaxed state, thereby making the eye fixation easier for both children and patient with difficult eyes.

### REFRACTOMETRY

Sphere (SPH)	-25D to +25D (when VD=12mm) (Increments: 0.12D and 0.25D)
Cylinder (CYL)	0D to $\pm 10D$ (Increments: 0.12D and 0.25D)
Axis (AX)	1° to 180° (Increments: 1° & 5°)
Cylinder Form	-, +, MIX
Minimum Pupil Diameter	Ø 2.0mm
Vertex Distance (VD)	0, 10, 12, 13.5mm, 15mm
Pupil Distance (PD)	10 to 85mm (Increments: 1mm)

### KERATOMETRY

Radius of Curvature	5.00 to 10.2mm (Increments: 0.01mm)
Refraction Index	1.3375
Corneal Power	33.00 to 67.50D (Increments: 0.05 / 0.12 / 0.25D)
Corneal Astigmatism	0D to -15D (Increments: 0.05 / 0.12 / 0.25D)
Axis	1° to 180° (Increments: 1° & 5°)

### OTHERS

Corneal Diameter	2.0 to 12.0mm (Increments: 0.1mm)
Memory	10 measurements for each eye
Printer	Thermal line printer with Auto cutter
Monitor	7 inch LCD colour monitor
Moveable distance of chinrest	65mm
Dimensions	Approx. 265(W) 480(L) 445(H) Approx.
Weight	20 kg
Data Output	USB, Video Terminal and Bluetooth
Accessories	a. Model eye b. Printer paper c. Dust cover d. Chinrest paper e. Operating Manual f. Power supply cable g. Dust proof cover
Power Supply	AC 100-240V, 50/60Hz
Stand by Time	5 min



European CE 2460  
ISO 13485:2016

Specifications are subject to change without prior notice

Manufactured by :



**APPASAMY ASSOCIATES**  
Empowering Vision™

Appasamy Associates Private Limited

R.S. No. 25/1,2 & 3, Thirubuvanai Village,  
Mannadipet Commune, Puducherry - 605107, INDIA.

Tel: +91-413-3200060, 3293507, Fax : +91-413-2641351

Email: info@appasamy.com, Website: www.appasamy.com

Marketed by :



**APPASAMY ASSOCIATES**  
Empowering Vision™

**APPASAMY ASSOCIATES (P) LTD.**

Corporate Office: 3<sup>rd</sup> Floor, Karuna Conquest IT Park,  
Sai Nagar, Ambattur Industrial Estate, Chennai - 600058, INDIA.

Tel: +91-44-4004 3430 | Email: info@appasamy.com

Website: www.appasamy.com