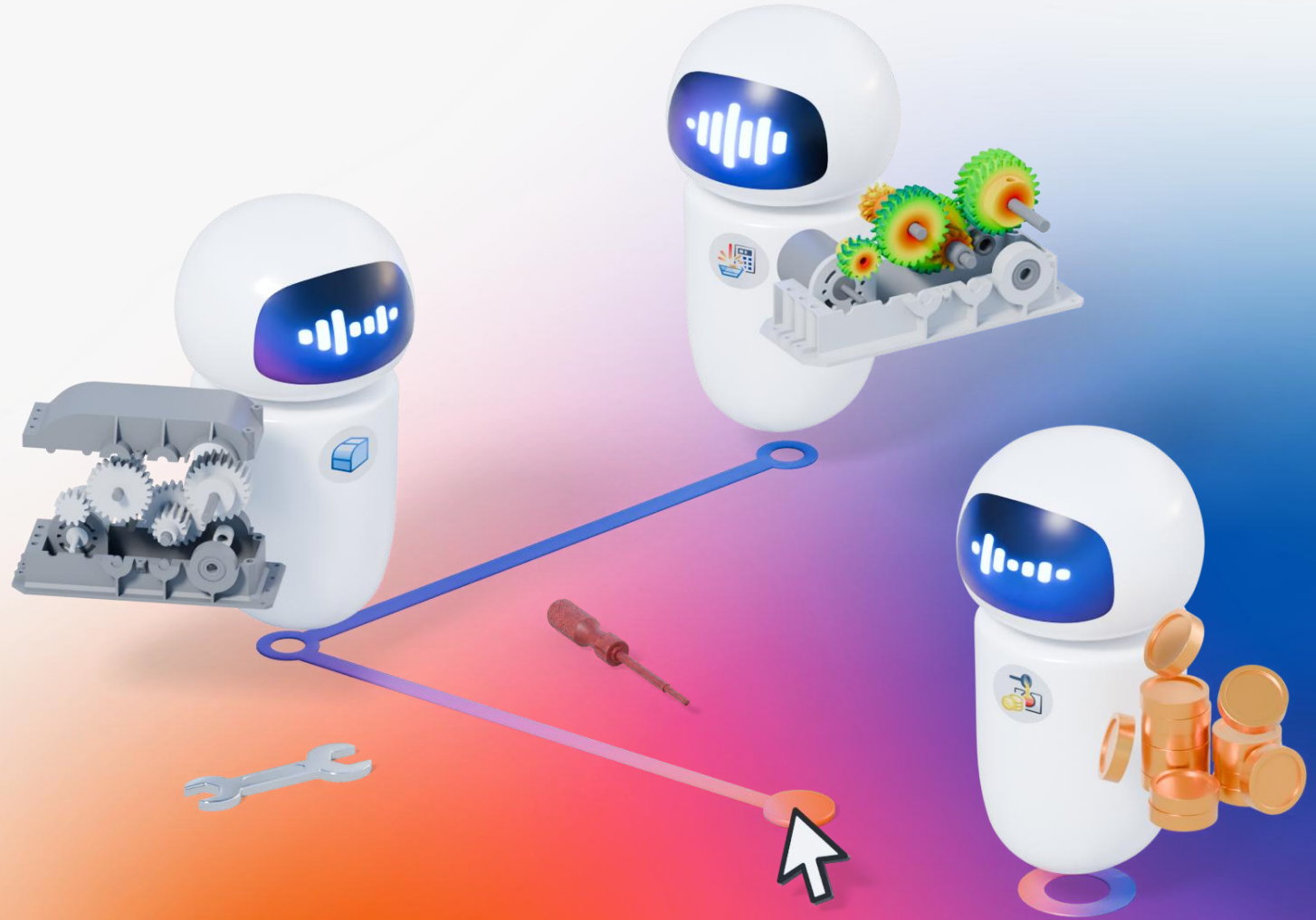


AI Agents in Engineering

Delegating complex tasks to Multi Agent Systems





AI Agents in Engineering

Delegating complex tasks to Multi Agent Systems



Ram Seetharaman
Head of AI



Dr. Moritz Maier
CEO Synera

Overview

1. Engineering challenges
2. Complex process example: Request for Quote (RFQ)
3. Single agent or Multi Agent System?
4. Building an Multi Agent System for RFQ
5. Summary

Q&A

1 Engineering Challenges



Engineering challenges

Talent
shortages



Productivity
pressure



Expertise
bottlenecks



“Shortfall of one
million engineers
by 2030

Engineering Skills Gap
Stonehaven 08/2023

Electromobility (e-mobility)

Company, business and industry news (other)

Volkswagen: Why the Group Needs China Speed for E-Cars

Four out of ten cars are sold by the Wolfsburg-based company in China, but lately, the brand has been faltering, even though the market is growing. The Chinese competition is catching up through electrification, is ahead in digitalization, and is developing much faster.



VISION mobility
2023

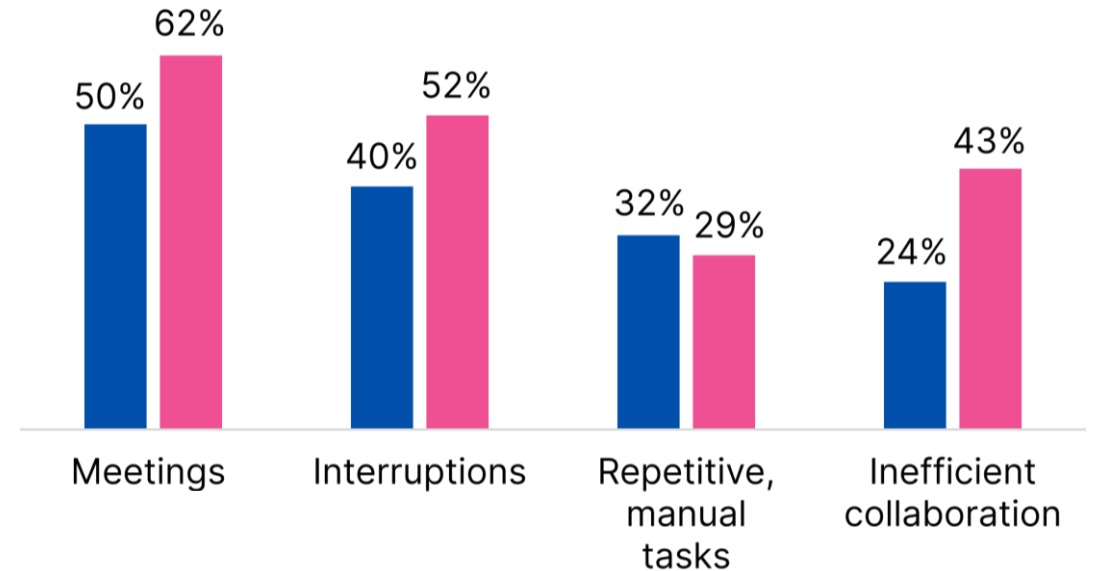
Engineering challenges

- Repetitive tasks and interruptions can be solved by single AI agents
- But what about the more collaborative tasks?

Where do engineers lose most of their time?

Company size

- Small to medium
- Large



Source: The Business Value of Reducing Engineering Time Wasters, Boucher 2022, Siemens/Tech-Clarity

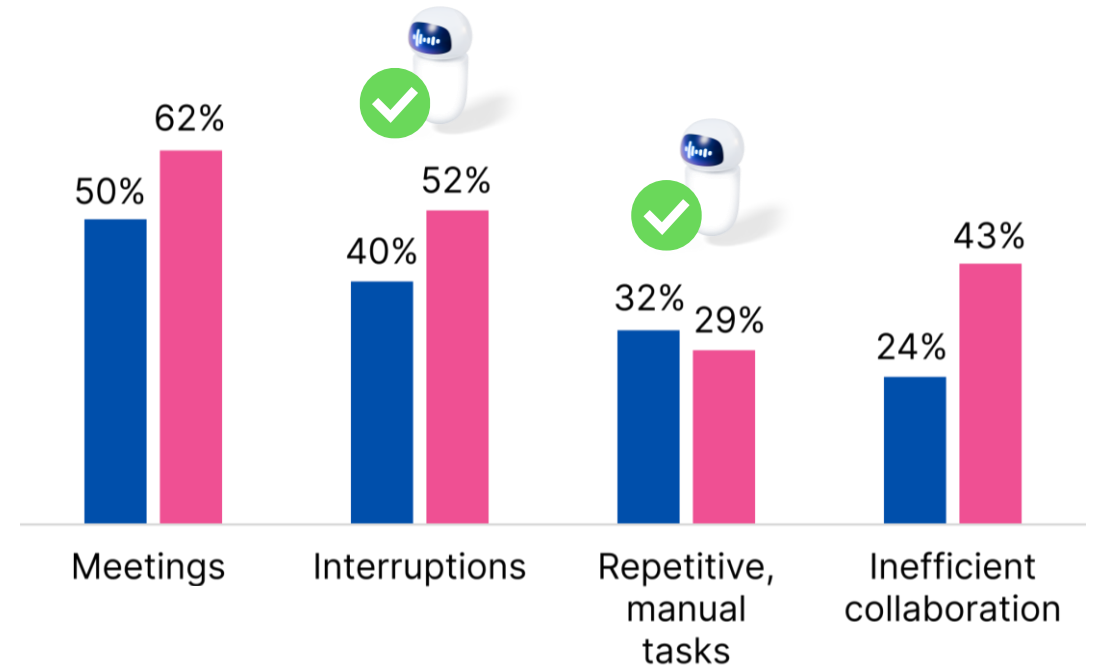
Engineering challenges

- Repetitive tasks and interruptions can be solved by single AI agents
- But what about the more collaborative tasks?

Where do engineers lose most of their time?

Company size

- Small to medium
- Large



Source: The Business Value of Reducing Engineering Time Wasters, Boucher 2022, Siemens/Tech-Clarity

Engineering challenges

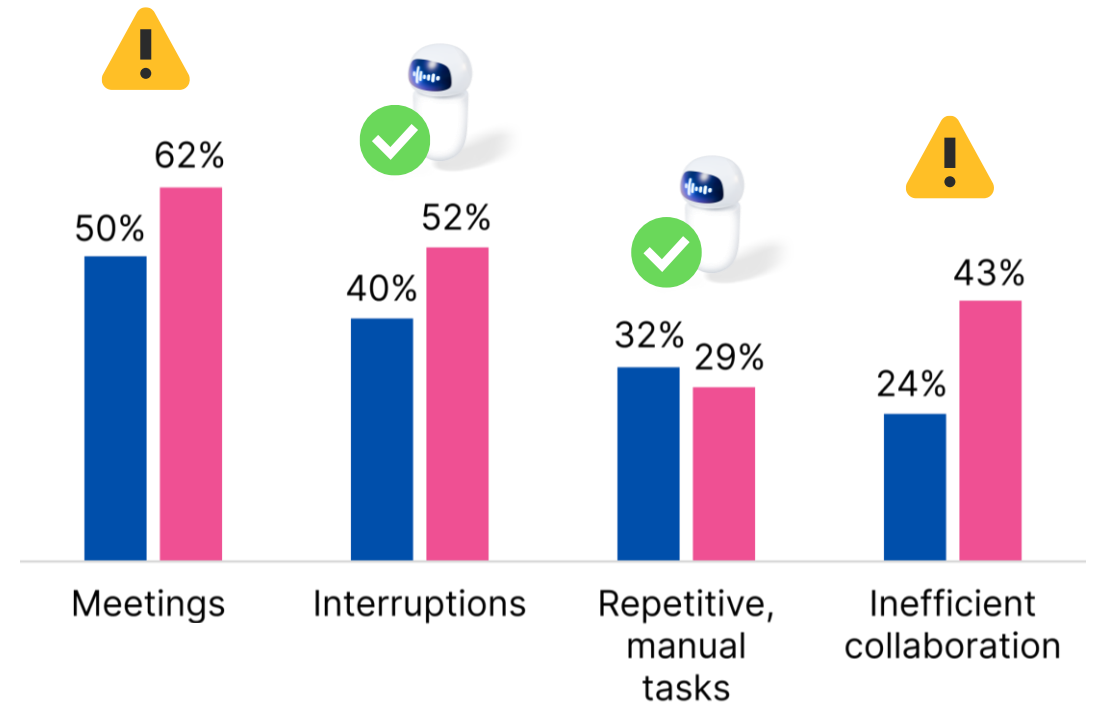
- Repetitive tasks and interruptions can be solved by single AI agents
- But what about the more collaborative tasks?

Where do engineers lose most of their time?

Company size

■ Small to medium

■ Large



Source: The Business Value of Reducing Engineering Time Wasters, Boucher 2022, Siemens/Tech-Clarity

Engineering challenges

- Complex processes require documentation and alignment
- They are often delayed by scheduling problems



Vacation

Project

Project



Vacation

Project

Project



Vacation

Vacation

Project

Engineering challenges

- Can agents team up and eliminate these delays?
- Can they create just the necessary documentation?



Project

Inactive

Project

Inactive



Inactive

Project

Inactive

Project

Inactive



Inactive

Project

Inactive

2

Example: Request for Quote





REQUEST FOR QUOTATION (RFQ)

NAME & ADDRESS OF FIRM:	DATE: 3 September 2010
	REFERENCE: UNDP/AFG/2010/0272 INSTALLATION OF SECURITY FENCE

You are requested to submit your offer to UNDP secure email address Bids.af@undp.org or in sealed envelope to the below address no later than **10 October 2010 at 14:00 hrs (Local time)**.

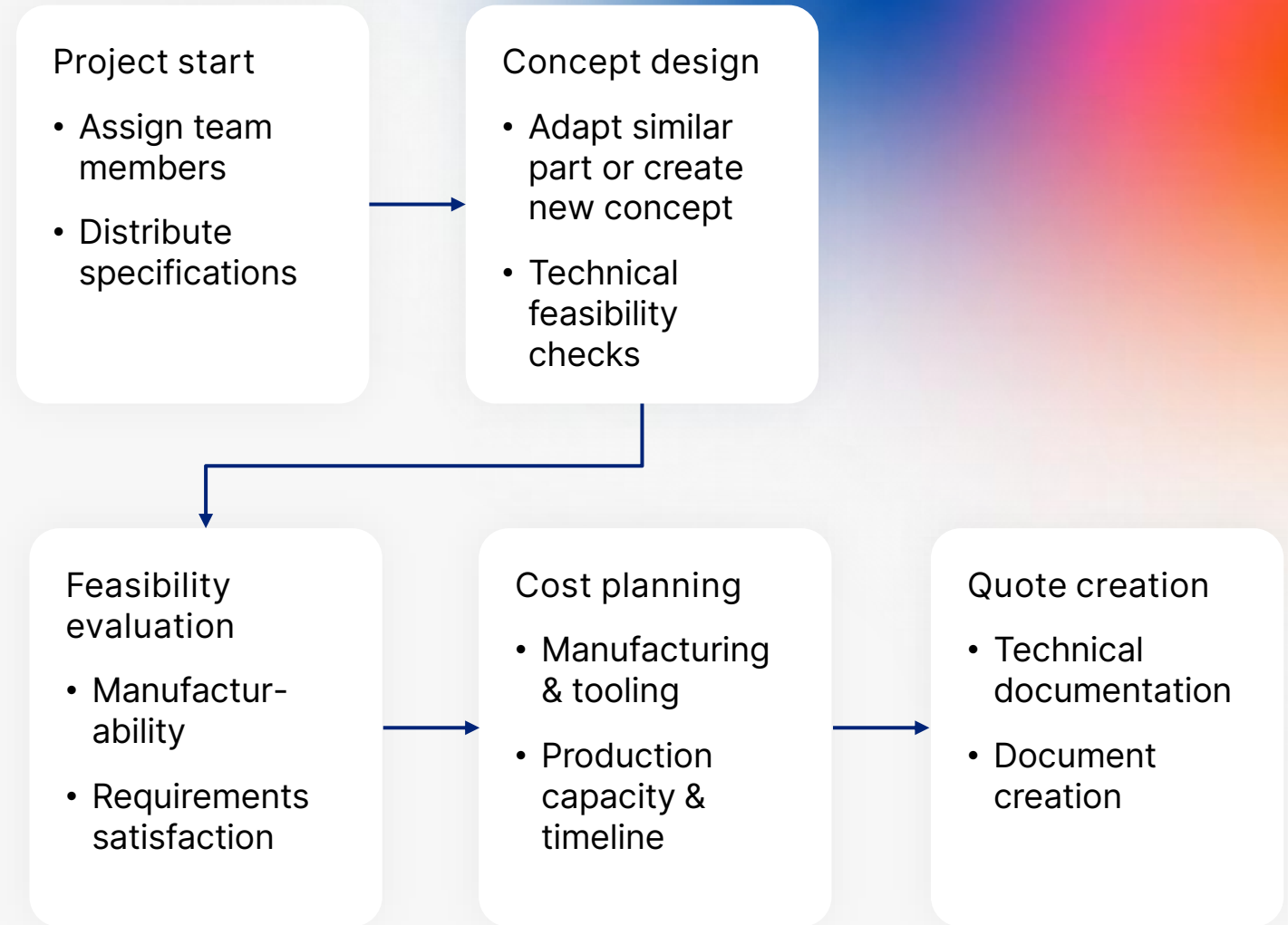
**United Nations Development Programme (UNDP),
Procurement Unit or UNDP
Shah Mahmood Ghazi Watt, Kabul, Afghanistan
Telephone :0202124148
E-mail Address: Bids.af@undp.org**

Note:
Site inspection will be conducted on Sunday 6 October 2010, at 10:00 AM (Kabul Time).

S/N	Specification and RFQ for security fence upgrading of Country office	Unit	Qty	Unit Cost USD	Total Cost USD
1	Demolition of existed steel cover at top of wall as applicable. The Contractor shall remove and dispose of all debris, concrete etc. The Contractor shall verify the location of debris disposal with the UNDP representative.	M3	6		
	Site preparation: Temporary site clearance including leveling of the site, foundation at top of the wall for RCC ring.	Ls	-		
	Reinforcement concrete (RCC) M200 to Engineer's approval	M3	8		
	clean prior to use	M2	4		

Example: RFQ

- Complex, multi-domain process
- Engineers involved: 4–6
- Target duration: days to weeks
- Possible time savings: up to 50%
- OEMs expect faster responses
- Highly competitive, response time directly impacts win rate



3

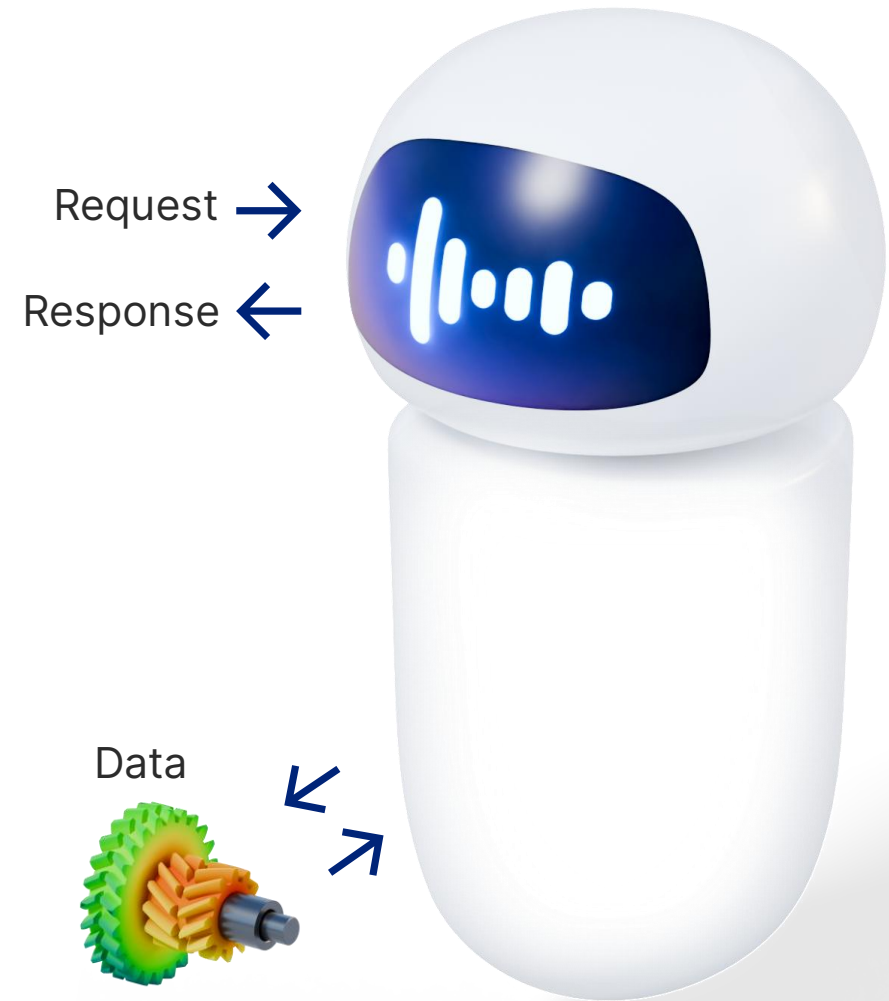
Single agent or Multi Agent System?



AI Agents

Agents combine two superpowers

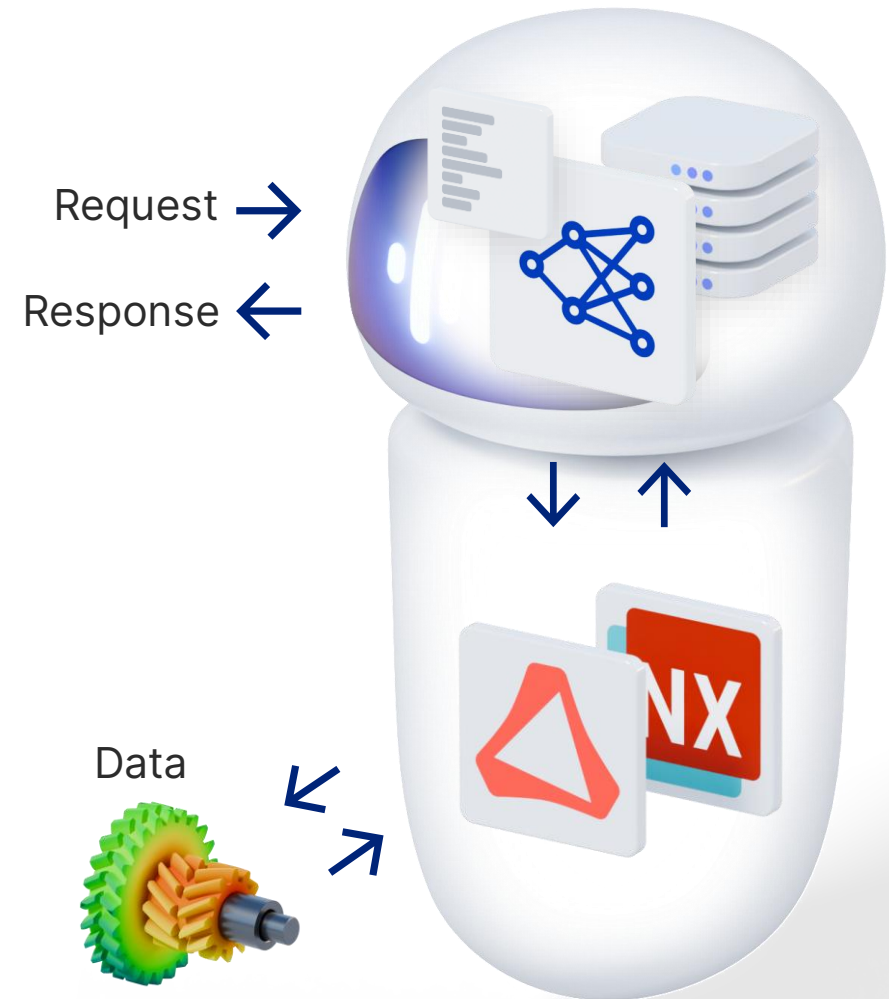
- Large language model & memory for communication & reasoning
- Engineering workflows to interact with software like CAD, CAx, Excel, etc.



AI Agents

Agents combine two superpowers

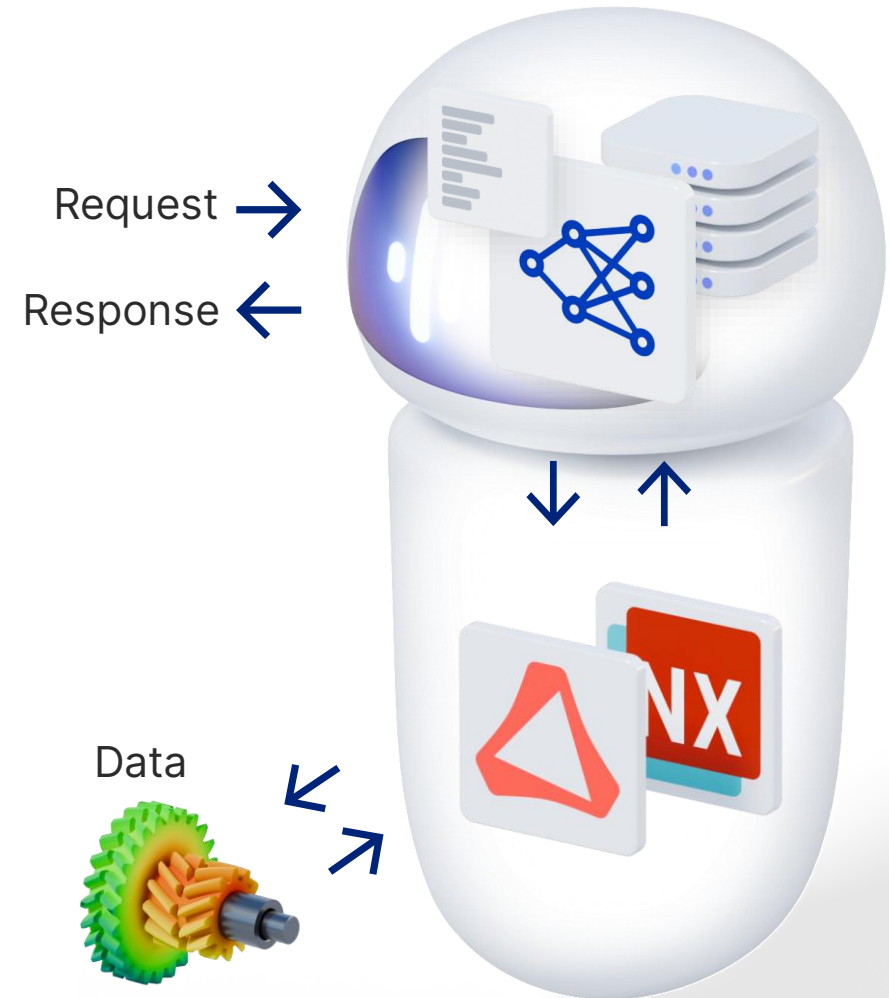
- Large language model & memory for communication & reasoning
- Engineering workflows to interact with software like CAD, CAx, Excel, etc.



AI Agents

Agents combine two superpowers

- Large language model & memory for communication & reasoning
- Engineering workflows to interact with software like CAD, CAx, Excel, etc.



Agent or Multi Agent System?



- Limited intelligence and model capability
- Focused memory and experience



Great for automating expert-scope, isolated tasks



Fail if task involves multiple domains or too many tools



- Combined intelligence and model capabilities
- Widespread knowledge



Great for automating complex, multi-domain tasks with flexible execution



Every additional agent introduces a randomness factor

Agent or Multi Agent System?



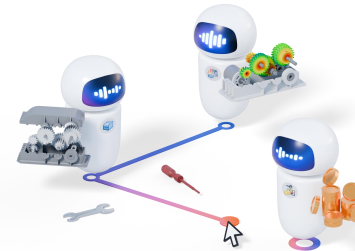
- Limited intelligence and model capability
- Focused memory and experience



Great for automating expert-scope, isolated tasks



Fail if task involves multiple domains or too many tools



- Combined intelligence and model capabilities
- Widespread knowledge



Great for automating complex, multi-domain tasks with flexible execution



Every additional agent introduces a randomness factor

Further reading



McKinsey Quarterly, July 24

Why agents are the next frontier of generative AI



Sreedhar & Chilton, 2024

Simulating Strategic Reasoning: Comparing the Ability of Single LLMs and Multi-Agent Systems to Replicate Human Behavior

4 Building a Multi Agent System for RFQ



RFQ Multi Agent System

Goal

- Whole RFQ process is completed by agents

Steps

- Process & organigram
- Building agents
- The supervisor
- Connecting the agents



Carl, Sales Engineer

BMW has requested a small filtration system. Please create a quote according to the requirement docs attached.

 request_for_quote.pdf

 specifications.pdf



RFQ Manager

Thans for providing the documents.

I'll get started with a commodity analysis to see if we already have a similar part available.



Commodity Agent

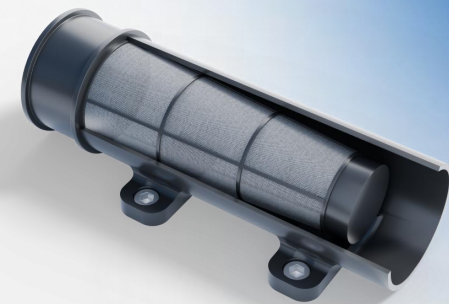
Checking our data base...

I found part no. 2938.32b that comes close to the required specs.



RFQ Multi Agent System

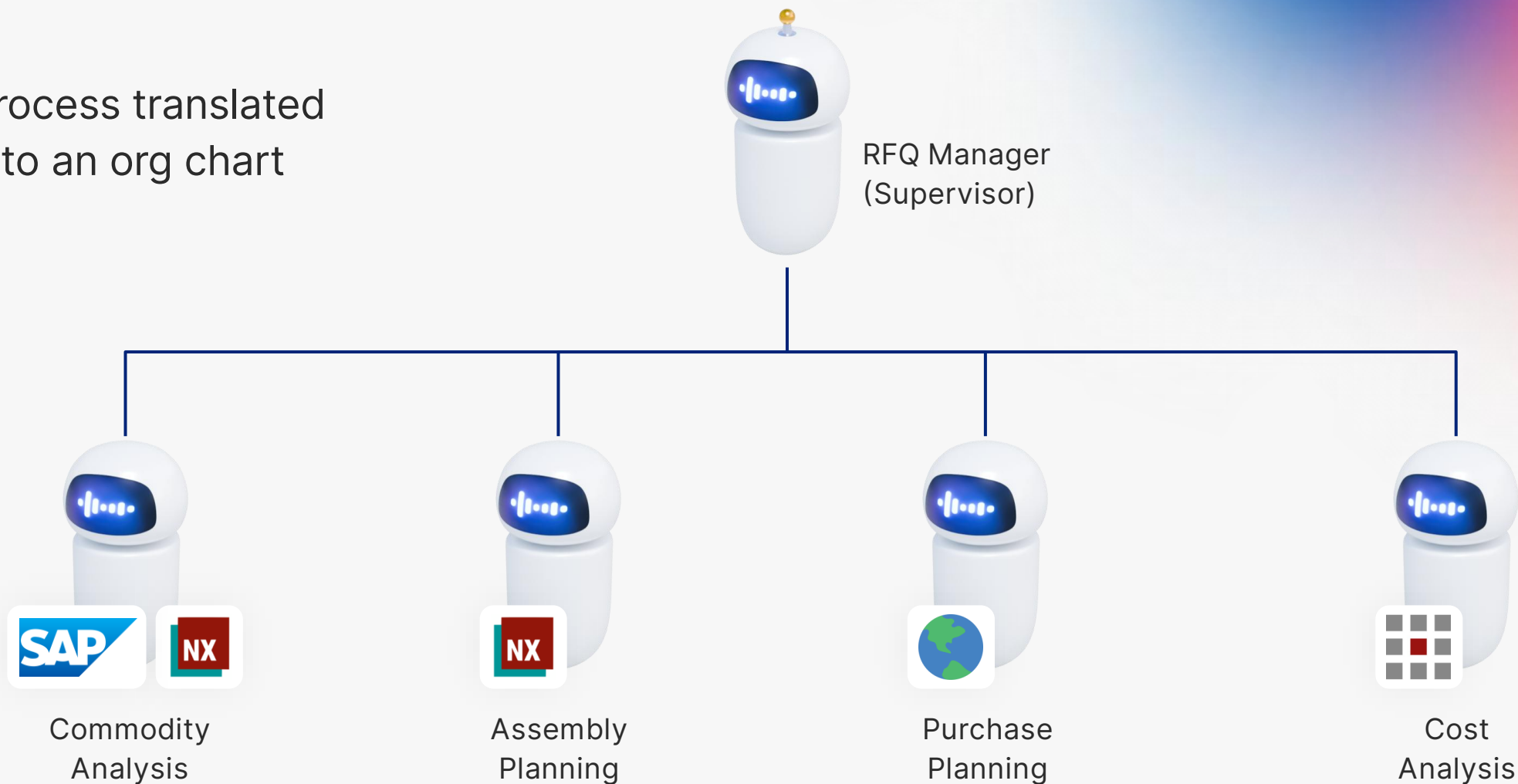
 Simplified process for a filtration system



RFQ Multi Agent System

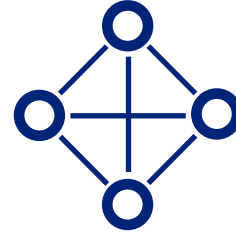


Process translated
into an org chart

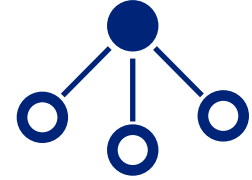


Setting up the structure

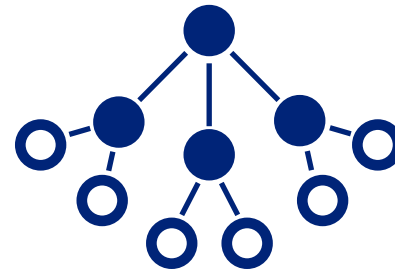
- Agents can theoretically be connected in any structure
- Some structures are more goal oriented than others



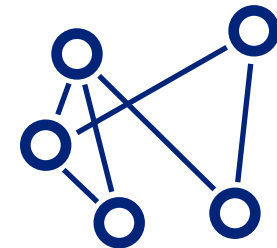
Network



Supervisor



Hierarchical

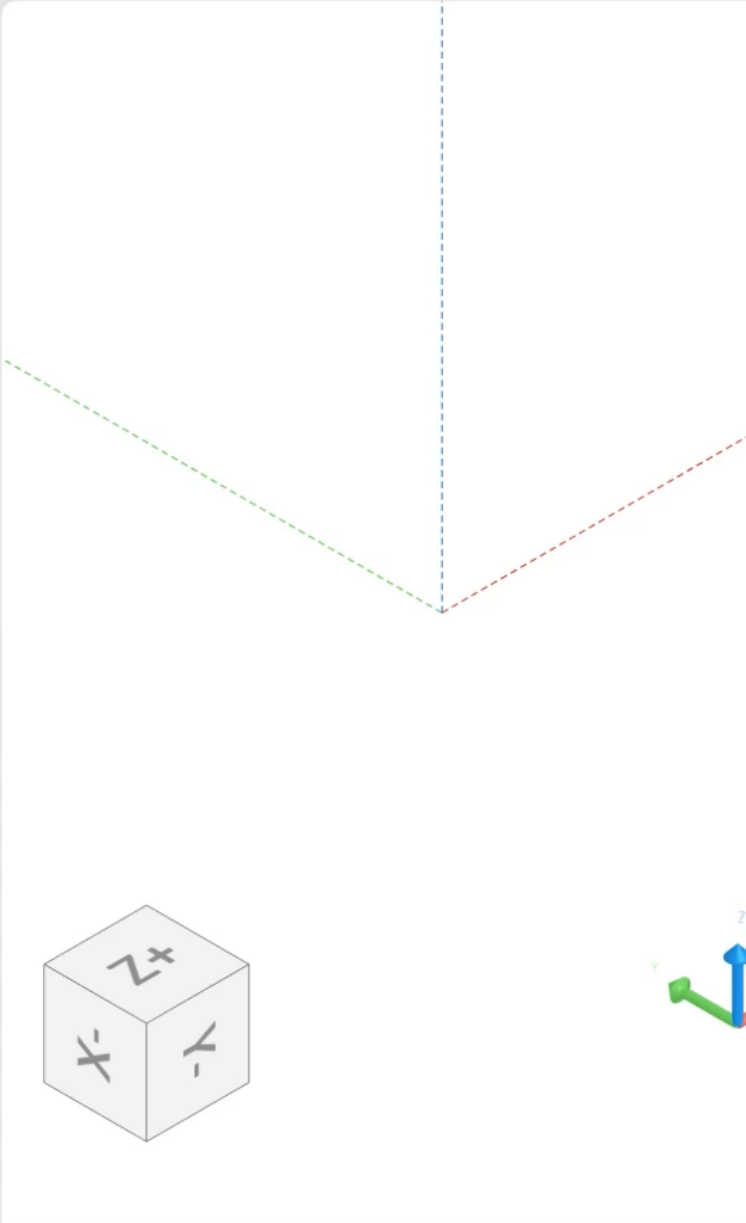


Custom

The supervisor

- Doesn't necessarily need workflows to interact with engineering software
- Coordinates the process flow and activates required agents
- Needs to know which agents are present and what their capabilities are
- Forms the point of contact with the human





Building the agents

Check out our last webinar on building engineering agents!



Building your first digital engineer

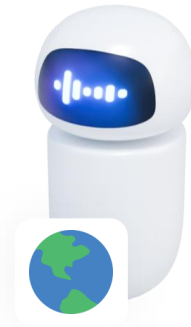
<https://www.synera.io/webinar/ai-agents-engineering-building-your-first-digital-engineer>



Commodity
Analysis



Assembly
Planning



Purchase
Planning



Cost
Analysis

Browse

Nodes Templates

Dat...
Control

Dat...
Import

Mat...
Export

Ref...
Excel

Cur...
FEA

Sur...
AM

Sol...
ML

Mes...
Con...

Vox...
MAS

Geo...
>

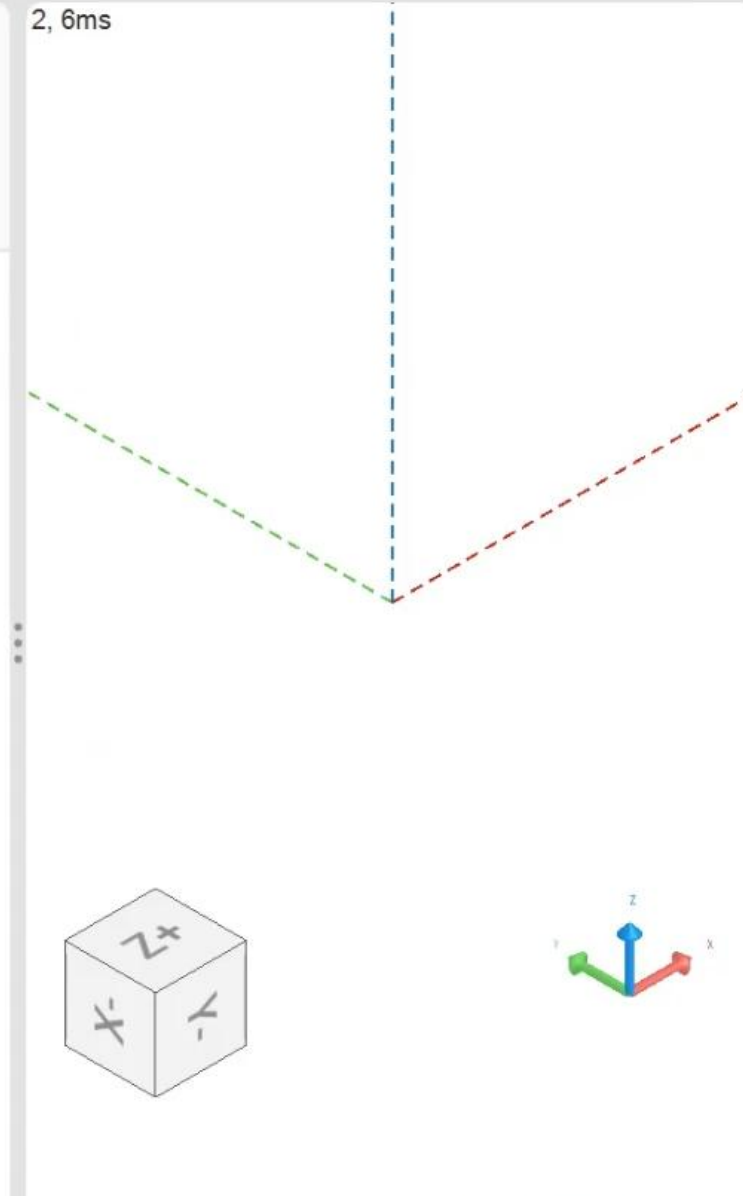
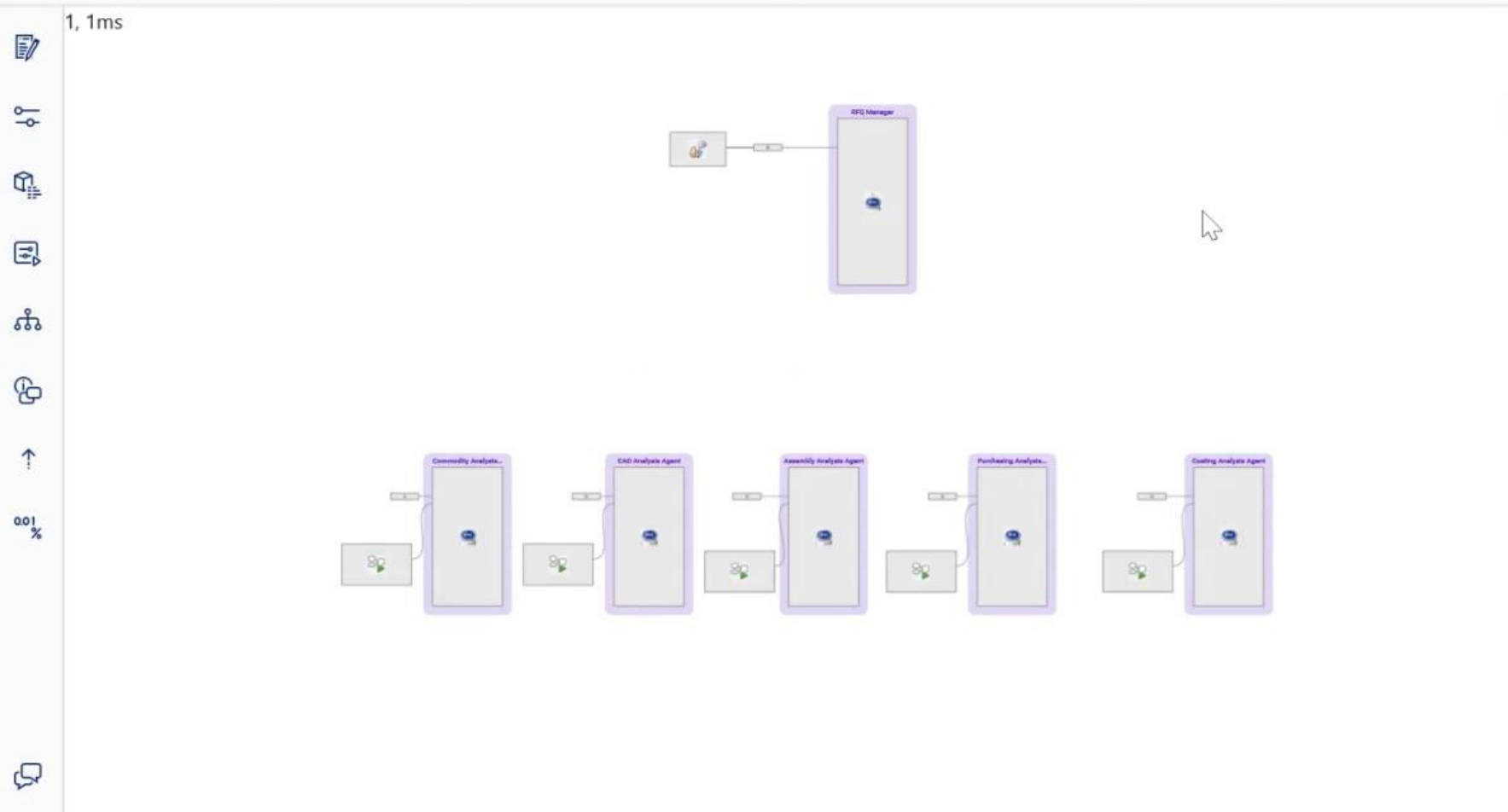
FEA
>

AM
>

ML
>

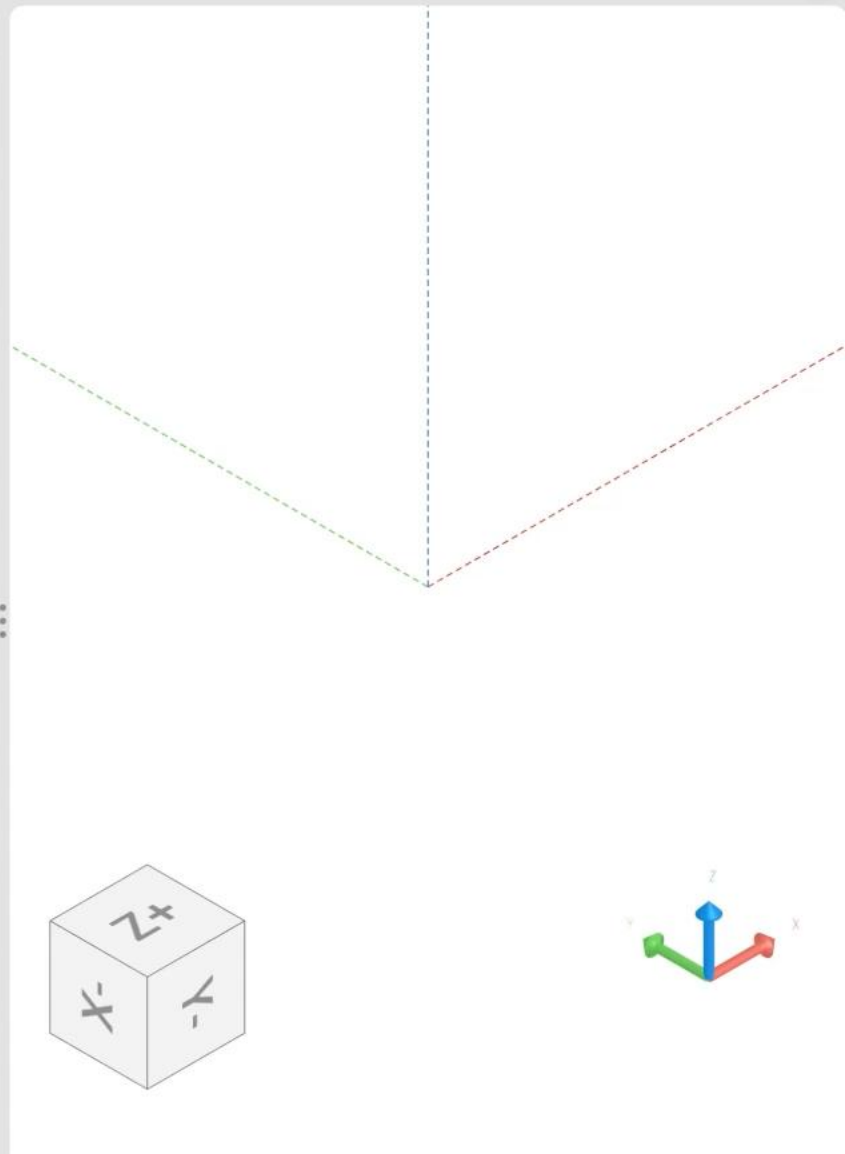
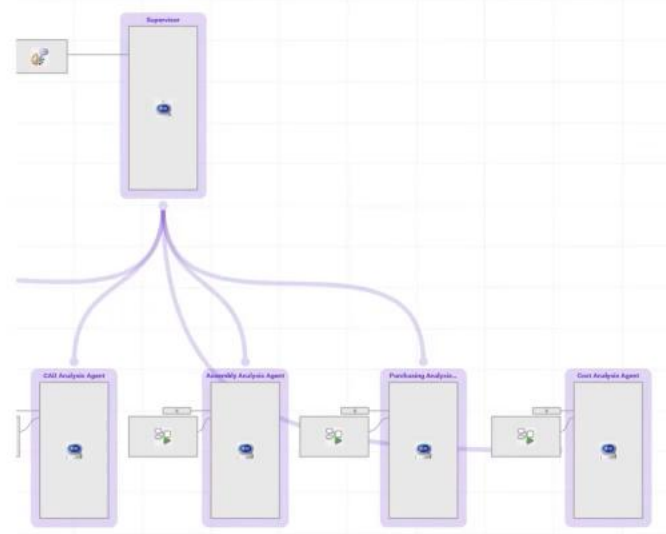
Con...
>

MAS
>



100%

Icons for various tools and functions.



5

Business Impact & Summary



Engineering is about to change

ARTIFICIAL INTELLIGENCE [Follow](#)

CEOs Start Saying the Quiet Part Out Loud: AI Will Wipe Out Jobs

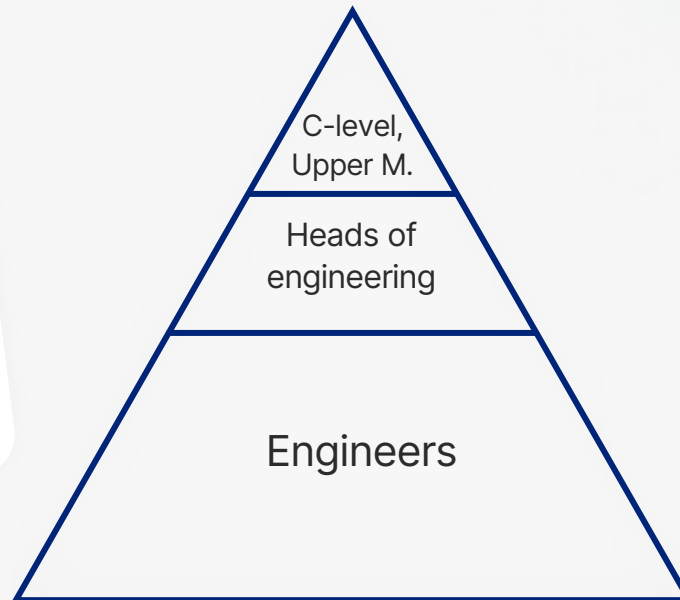
Ford chief predicts AI will replace 'literally half of all white-collar workers'

By [Chip Cutter](#) [Follow](#) and [Haley Zimmerman](#) [Follow](#)

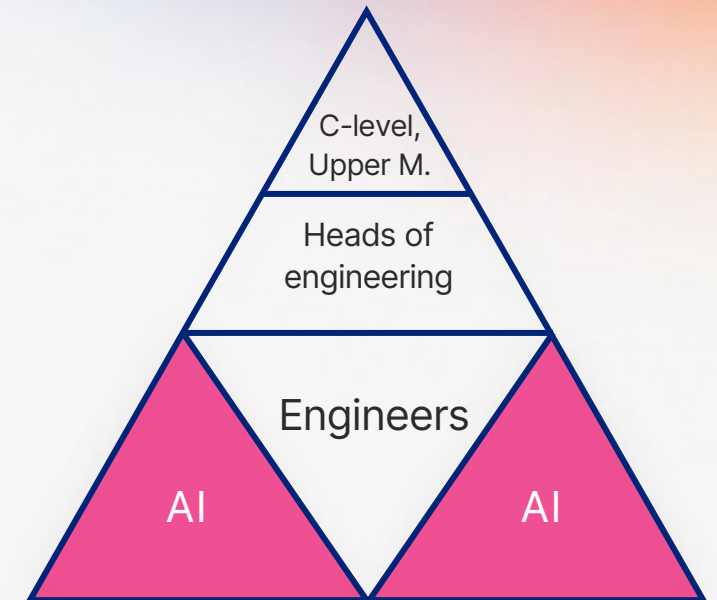
July 2, 2025 9:00 am ET

Wall Street Journal
2025

Organizational chart now



Organizational chart with AI



Summary



- Identify business critical engineering processes with multiple departments involved
- Design a suitable multi agent system
 - Segment the process into individual agents
 - Connect them via a supervisor agent
- Balance automation by creating tool workflows that break down the complexity of engineering software and make it digestible for an LLM

Learn more about Synera's AI Agents for engineering



Building your first digital engineer

<https://www.synera.io/webinar/ai-agents-engineering-building-your-first-digital-engineer>



Agents as engineering productivity boosters

<https://www.synera.io/webinar/ai-agents-in-engineering>

Q&A

