

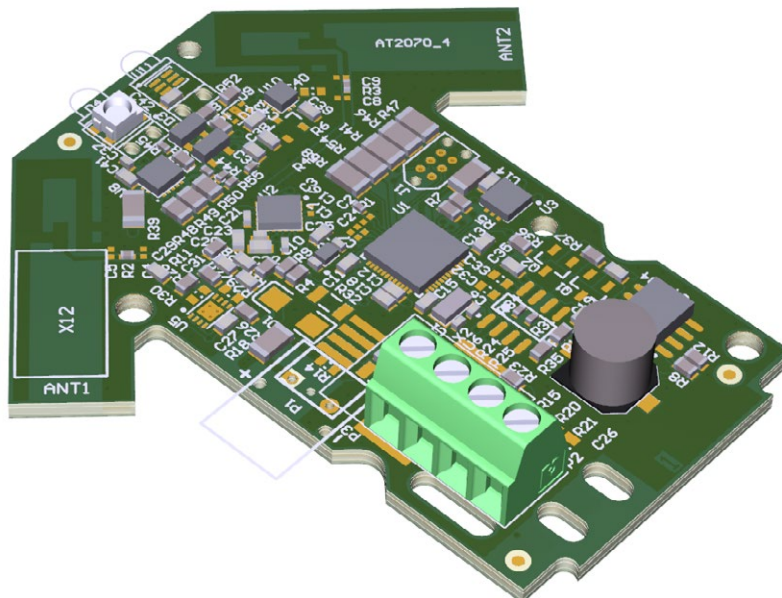
WCM-V2-RN

Long range intrinsically safe ATEX & IECEx Bluetooth Connectivity Module for integrating a DALI-2 & UART connected routing node.

The WCM-V2 (Wireless Control Module) integrates connected devices into a  Wirepas or  Bluetooth enabled Mesh network. The WCM-V2-RN is used to integrate a gateway into such a network.

Applications

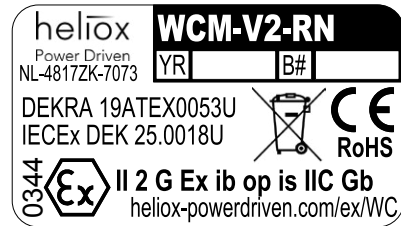
- ✓ Due to their ATEX and IECEx certificate, the WCM-V2-RN devices are mostly used in solutions in harsh environments.
- ✓ Main fields of operation for this type of device are the oil and gas industry, the mining industry and chemical plants.



Product type marking

Each WCM module is marked with a sticker. This sticker shows the following information:

- ✓ **Certification product type**
- ✓ **Identification numbers product**
- ✓ **Ex marking information**
- ✓ **Production year and batch number (blank in the example).**

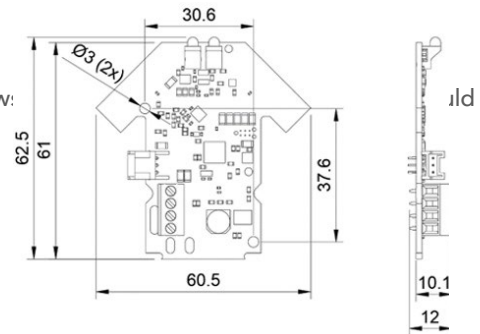


Mechanical installation

All WCM modules share the same mounting layout. Non-metallic M3 screw:

be used to secure the WCM on a non-metallic mounting plate. All other mounting solution can be reviewed by Heliox upon request.

When mounting the WCM V2, please ensure a minimal clearance of 1.5mm to the nearest metal component.



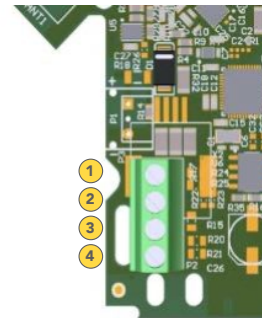
Electrical installation

The WCM-V2-RN has a green Phoenix Contact connector (P2) on board.

The pinout of connector P2 is as follows:

- 1 RS-485-A
- 2 Vin
- 3 RS-485-B
- 4 GND

Please ensure that – in the final mounting position – there is no mechanical stress on the wiring and/or connector.



Initial start-up

To configure the WCM-V2-RN, please power on within the range of a Bluetooth Mesh network. After power-up, follow the configuration steps in the network commissioning & configurator software tools.

Defective products

In case of a malfunctioning WCM, contact Heliox Power Driven for a replacement product. The WCM modules are not to be repaired by any other party

Entity parameters & Power supply

Connector P2 (screw terminals):

Ui= 7.14 V; Ii= 261 mA; Pi= 465 mW; Li= 0 µH; Ci= 7 µF.

Schedule of limitations

- ✓ Protecting enclosure required with IP20 rating minimum according IEC 60529
- ✓ Ambient temperature range is -40 °C to +75 °C.
- ✓ The clearance between the board parts and metal objects shall be 1.5 mm minimum
- ✓ The clearance between the LED and any object shall be 1.5 mm minimum.
- ✓ Maximum board temperature is 94 °C under fault conditions.
- ✓ Maximum component temperature is 147 °C, for components with a surface area < 1000 mm².

Applying a custom light guide directly to the WCM-V2 LED within a 1.5 mm distance will be assessed by the notified body during the total product assembly certification