

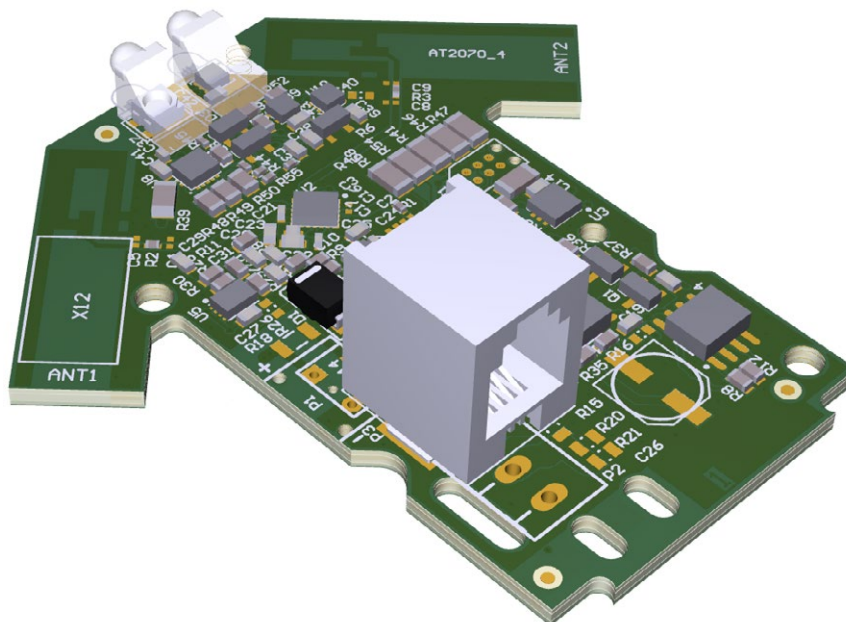
WCM-V2-LIGHT

Long range intrinsically safe ATEX & IECEx Bluetooth Connectivity Module for integrating a DALI-2 master

The WCM-V2 (Wireless Control Module) integrates connected devices into a  Wirepas or  Bluetooth enabled Mesh network. The WCM-V2-LIGHT is used to integrate an LED light fixture into such a network.

Applications

- ✓ Due to their IECEx and ATEX certificates, the WCM-V2-LIGHT devices are mostly used in light fixtures installed in harsh and explosive environments.
- ✓ The main fields of operation for this type of device are the oil and gas industry, chemical plants and industrial steelwork/foundry sites.

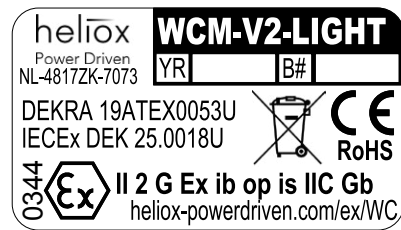


Product type marking

Each WCM module is marked with a sticker.

This sticker shows the following information:

- ✓ **Certification product type**
- ✓ **Identification numbers product**
- ✓ **Ex marking information**
- ✓ **Production year and batch number (blank in the example).**

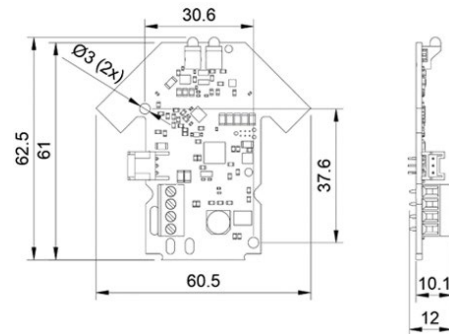


Mechanical installation

All WCM modules share the same mounting layout.

Non-metallic M3 screws or clip-on connectors should be used to secure the WCM on a non-metallic mounting plate. Heliox can review all other mounting solutions upon request.

When mounting the WCM V2, please ensure a minimal clearance of 1.5mm to the nearest metal component.



Electrical installation

The WCM-V2-LIGHT has a FCC 47 CFR Part 68 RJ-9 modular connector on board (P3).

The pinout of the connector is as follows:

- ① GND
- ② RS-485-A
- ③ RS-485-B
- ④ Vin

Please ensure that – in the final mounting position – there is no risk for mechanical stress on the wiring as well as on the connector.



Atex & IECEx Entity parameters & Power supply

Connector P3 (RJ-9 socket):

Ui= 7.14 V; Ii= 261 mA; Pi= 465 mW; Li= 0 µH;
Ci= 7,0 µF.

Schedule of limitations

- ✓ Protecting enclosure required with IP20 rating minimum according IEC 60529
- ✓ Ambient temperature range is -40 °C to +75 °C.
- ✓ The clearance between the board parts and metal objects shall be 1.5 mm minimum
- ✓ The clearance between the LED and any object shall be 1.5 mm minimum.
- ✓ Maximum board temperature is 94 °C under fault conditions.
- ✓ Maximum component temperature is 147 °C, for components with a surface area < 1000 mm².

Applying a custom light guide directly to the WCM-V2 LED within a 1.5 mm distance will be assessed by the notified body during the total product assembly certification

Initial start-up

To configure the WCM-V2-LIGHT, please power on (insert RJ-9 cable with correct pinout as shown above) within the range of a Bluetooth Mesh network. After power-up, follow the configuration steps in the network commissioning & configurator software tools.

Defective products

If the WCM malfunctions, contact Heliox Power Driven for a replacement product. The WCM modules may not be repaired by any party other than those approved by Heliox Power Driven.