



# International Union of Operating Engineers

## 2022 General Membership Construction Training Course Catalog

Visit <https://iuoe-its.org/> to view prerequisites and register for classes

<b>Course</b>	<b>Dates</b>
Earthmoving Fundamentals	January 3 - 7
Crane Operations - Intro To Tower Crane Operations	January 10 - 14
Topcon GPS Machine Control Training	January 10 - 14
Crane Operations - Intro To Tower Crane Operations	January 17 - 21
Trimble GPS Machine Control Training	January 17 - 21
SMAW Welding	January 17 - 21
Asphalt Paving Operations	January 18 - 20
Excavation Operations	January 24 - 28
Motorgrader Operations	January 24 - 28
Tractor Loader-Backhoe Operations	January 24 - 28
Asphalt Milling Machine Operations	January 25 - 27
Crane Operations - Practical Testing for NCCCO Certification	January 31 - February 4
Excavation Operations	January 31 - February 4
Crane Operations - Intro To Luffing Crawler Crane Operations	February 7 - 11
Crane Operations - Intro To Tower Crane Operations	February 7 - 11
Crane Operations - Level 1 Crane Operations for Beginners	February 7 - 11
Crane Operations - Steel Erection Crane Training	February 7 - 11
Topcon GPS Machine Control Training	February 7 - 11
Rigger Level 1 & Signaller Practical Exams for NCCCO Certification	February 7 - 11



# International Union of Operating Engineers

## 2022 General Membership Construction Training Course Catalog

Visit <https://iuoe-its.org/> to view prerequisites and register for classes

<b>Course</b>	<b>Dates</b>
SMAW Welding	February 7 - 11
Crane Operations - Level 2 Luffing Crawler Crane Operations	February 14 - 18
Crane Operations - LMI Setup & Crane Operations	February 14 - 18
Crane Operations - Tower Crane Written Test Prep & Practical Testing for NCCCO Certification	February 14 - 18
Trimble GPS Machine Control Training	February 14 - 18
Asphalt Milling Machine Operations	February 15 - 17
Crane Operations - Intro To Tower Crane Operations	February 21 - 25
Excavation Operations	February 21 - 25
Motorgrader Operations	February 21 - 25
Asphalt Paving Operations	February 22 - 24
Bulldozer Operations	February 28 - March 4
Earthmoving Fundamentals	February 28 - March 4
Topcon GPS Machine Control Training	February 28 - March 4
SMAW Welding	February 28 - March 4
Crane Operations - Intro To Tower Crane Operations	March 7 - 11
Crane Operations - Written Test Preparation for NCCCO Certification	March 7 - 11
Trimble GPS Machine Control Training	March 7 - 11
Bulldozer Operations	March 14 - 18
Crane Operations - Assembly/Disassembly of Luffing Crawler Cranes	March 14 - 25



# International Union of Operating Engineers

## 2022 General Membership Construction Training Course Catalog

Visit <https://iuoe-its.org/> to view prerequisites and register for classes

<b>Course</b>	<b>Dates</b>
Earthmoving Fundamentals	March 14 - 18
Tractor Loader-Backhoe Operations	March 14 - 18
Mig Welding	March 14 - 18
Asphalt Paving Operations	March 15 - 17
Crane Operations - Steel Erection Crane Training	March 21 - 25
Crane Operations - Tower Crane Jacking	March 21 - 25
Excavation Operations	March 21 - 25
Motorgrader Operations	March 21 - 25
Asphalt Milling Machine Operations	March 22 - 24
Topcon GPS Machine Control Training	March 28 - April 1
Level 1 Crane Operations for Beginners	April 4 - 8
Crane Operations - Intro To Tower Crane Operations	April 4 - 8
Trimble GPS Machine Control Training	April 4 - 8
Mechanics Training - Tier 4 Diesel Engine Air Induction & Emissions Control	April 4 - 8
Crane Operations - Practical Testing for NCCCO Certification	April 11 - 14
SMAW Welding	April 11 - 14
Crane Operations - LMI Setup & Crane Operations	April 19 - 29
Excavation Operations	April 19 - 23
Excavation Operations	April 25 - 29



# International Union of Operating Engineers

## 2022 General Membership Construction Training Course Catalog

Visit <https://iuoe-its.org/> to view prerequisites and register for classes

<b>Course</b>	<b>Dates</b>
SMAW Welding	April 25 - 29
Practical Testing for NCCCO Certification	May 2 - 6
Crane Operations - Intro To Tower Crane Operations	May 2 - 6
Excavation Operations	May 2 - 6
Mechanics Training - Electronic Fundamentals	May 2 - 6
Crane Operations - Tower Crane Written Test Prep & Practical Testing for NCCCO Certification	May 16 - 20
Excavation Operations	May 16 - 20
Tractor Loader-Backhoe Operations	May 16 - 20
SMAW Welding	May 16 - 20
Intro to Luffing Crawler Crane Operations	May 16 - 20
Level 2 Luffing Crawler Crane Operations	May 23 - 27
Level 1 Crane Operations for Beginners	May 23 - 27
Excavation Operations	June 6 - 10
Mechanics Training - Hydraulic Fundamentals	June 6 - 10
SMAW Welding	June 6 - 10
Drone Level 1 Training	June 13 - 17
Excavation Operations	June 13 - 17
Mechanics Training - Diesel Engine Fundamentals	June 13 - 17
Level 1 Crane Operations for Beginners	June 13 - 17



# International Union of Operating Engineers

## 2022 General Membership Construction Training Course Catalog

Visit <https://iuoe-its.org/> to view prerequisites and register for classes

<b>Course</b>	<b>Dates</b>
Mig Welding	June 21 - 24
Liebherr and Tadano Operations	June 21 - 25
LMI Setup and Crane Operations	June 21 - 25
Tractor Loader-Backhoe Operations	July 11 - 15
2 Week LMI Setup and Crane Operations	July 11 - 15
2 Week LMI Setup and Crane Operations	July 18 - 25
Excavation Operations	July 18 - 22
Level 1 Crane Operations for Beginners	July 25 - 29
Excavation Operations	July 25 - 29
Mechanics Training - Tier 4 Diesel Engine Air Induction & Emissions Control	July 25 - 29
SMAW Welding	August 1 - 5
Excavation Operations	August 15 - 19
Excavation Operations	August 15 - 19
Drone Level 2 Training	September 12 - 16
Tractor Loader-Backhoe Operations	September 12 - 16
Excavation Operations	September 19 - 23
Excavation Operations	September 26 - 30
Mechanics Training - Hydraulic Fundamentals	September 26 - 30
Crane Operations - Tower Crane Jacking	October 17 - 21



# International Union of Operating Engineers

## 2022 General Membership Construction Training Course Catalog

Visit <https://iuoe-itrs.org/> to view prerequisites and register for classes

<b>Course</b>	<b>Dates</b>
Excavation Operations	October 17 - 21
Mig Welding	October 17 - 21
Excavation Operations	October 24 - 28
Mechanics Training - Electronic Fundamentals	October 24 - 28
Drone Level 1 Training	November 7 - 11
Excavation Operations	November 14 - 18
Mechanics Training - Diesel Engine Fundamentals	November 14 - 18
Tractor Loader-Backhoe Operations	November 14 - 18
Excavation Operations	December 5 - 9
Mechanics Training - Hydraulic Fundamentals	December 5 - 9
Excavation Operations	December 12 - 16
Mechanics Training - Tier 4 Diesel Engine Air Induction & Emissions Control	December 12 - 16
Mig Welding	December 12 - 16

This schedule will be updated as classes are added throughout the year. Please visit <https://iuoe-itrs.org/> for the latest class descriptions, prerequisites, and to register for classes.



# International Union of Operating Engineers

## 2022 General Membership Construction Training Course Catalog

Visit <https://iuoe-its.org/> to view prerequisites and register for classes

### **NEW CRANE TECHNOLOGY & LMI OPERATIONS**

This course is an introduction to today's latest crane computers. You will have the opportunity to set up, configure, and operate some of the newest mobile and tower cranes in the construction industry. Manufacturer brands that will be onsite: Link Belt, Manitowoc, Grove, Leibherr, Terex, Tadano and Potain. This class is open to Local Union Instructors as well as the general membership.

### **EMERGENCY GENERATOR OPERATIONS & MAINTENANCE**

This is a journey level class for both "theory and practical" knowledge on diesel generator operation. The seminar will have three primary categories:

- 1) Diesel generator maintenance and operation
- 2) Safety with emphasis on OSHA standards, Title 29 1910 & 1926 Code of Federal Regulations
- 3) Basic electrical knowledge as per National Electrical Code guidelines

Students will have hands on time with a diesel generator package.

### **NCCCO / OECF PRACTICAL TRAINING & TESTING**

The IUOE Training & Education Center will be offering training and testing for these two industry certifications on alternating months.

### **MOBILE CRANE SET-UP/INSPECTIONS/OPERATIONS**

The IUOE Training & Education Center will be offering classes in all areas of crane operation from introductory to advanced, including Rigging, Assembly/Disassembly and Multiple Crane Lifts.

### **EXCAVATOR OPERATIONS**

The IUOE Training & Education Center will be offering classes in all areas of excavator operation from beginner through advanced. Topics covered: Trenching, Benching, Sloping, Trench Box Work, Backfilling, and Layout.

### **BULLDOZER OPERATIONS**

The IUOE Training & Education Center will be offering classes in all areas of bulldozer operation from beginner through advanced. Topics covered: Working on Slopes, Slot Dozing, Backfilling, Cuts and Fills, and Working with Grade Control.

### **TRACTOR LOADER BACKHOE OPERATIONS**

The IUOE Training & Education Center will be offering classes in all areas of TLB operation from beginner through advanced. Topics covered: Trenching, Benching, Sloping, Trench Box Work, Backfilling, and Layout.

### **GPS MACHINE CONTROL INSTRUCTION**

This course will take the member through a step-by-step system set up for GPS machine control electronics. After completion of this course the member will understand how to install and use the operational functions of these components on various pieces of equipment.





# International Union of Operating Engineers

## 2022 General Membership Construction Training Course Catalog

Visit <https://iuoe-its.org/> to view prerequisites and register for classes

*You can expect to train only with the best equipment when attending classes held at the International Training & Education Center. Here's a peek at the equipment you can look forward to training with:*

### MANITOWOC MLC165-1

The Manitowoc MLC165-1 provides a broad range of features that will undoubtedly be translated into jobsite benefits that increase productivity and save money.

#### Features:

- 180 Ton Capacity
- 160' Main Boom
- 120' Luffer



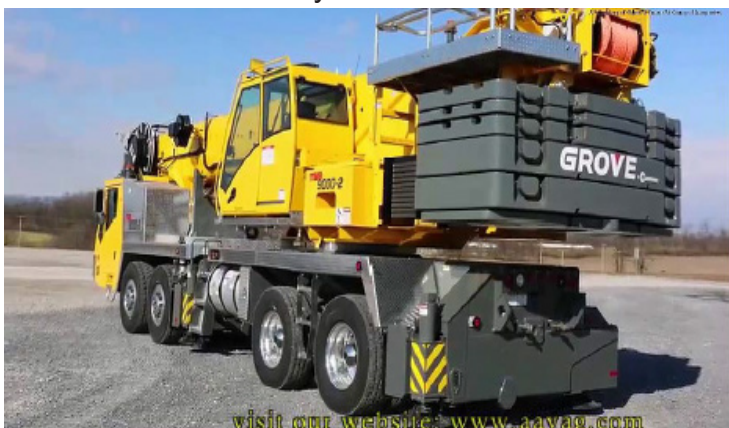
Manitowoc MLC165-1

### GROVE TMS9000-2

The TMS9000-2 is the premier truck-mounted crane in the industry. Features like the Grove MEGAFORM boom, optional extensions and counterweight removal system make the TMS9000-2 maneuverable and strong, making an impact on any jobsite.

#### Features:

- 115 Ton Capacity
- 169' Main Boom
- 57' Bi-fold Swing Away
- CCS Control System



Grove TMS9000-2





# International Union of Operating Engineers

## 2022 General Membership Construction Training Course Catalog

Visit <https://iuoe-itrs.org/> to view prerequisites and register for classes

### GROVE GRT8100

The GRT8100 has been designed and built for today's worldwide market with a 154 ft. 5 section main boom which provides better reach and greater versatility, combined with the NEW Manitowoc Crane Control System with user-friendly interface, tilting cab, impressive load charts, and extensive component testing.

#### Features:

- 100 Ton Capacity
- 154' Main Boom
- 56' Bi-fold Swing Away
- CCS Control System



Grove GRT8100

### POTAIN MDT 219

The MDT 219 has the highest capacity of all models in the MDT CCS City tower crane range, making it ideal for North American construction, where buildings are increasingly becoming taller and more complex.

#### Features:

- 8.8 Ton Capacity
- Fast and easy set-up – the crane can be calibrated in 15 minutes.
- Increased performance – CCS generates extra load chart increase.
- Optimized ergonomic control – new driver control unit for enhanced ergonomics and control.
- Easy maintenance – on-screen maintenance tool and optional remote monitoring through CraneSTAR Diag.
- Standardized components – easy spare parts availability.



Potain MDT 219



# International Union of Operating Engineers

## 2022 General Membership Construction Training Course Catalog

Visit <https://iuoe-its.org/> to view prerequisites and register for classes

### POTAIN MDT Igo T70A

The Igo T70A is an evolution of the Igo T70 with several technical improvements from its previous version: a closed loop slewing mechanism ensuring better operating sensation, SM1 trolley configuration for improved load chart capacity and the ability to accept 3 mast inserts for a maximum hook height of 35 m (115 ft).

#### Features:

- 4.4 Ton Capacity
- Self-Erecting Tower Crane
- Variable Mast Heights
- Multiple Operational Jib Configurations
- Optional Ultra View Cab or Cab 800
- 14.8 x 14.8 ft Footprint
- Wireless Remote Control
- 480v Three-Phase Power Hookup



Potain MDT Igo T70A







# International Union of Operating Engineers

## 2022 General Membership Construction Training Course Catalog

Visit <https://iuoe-its.org/> to view prerequisites and register for classes

### LINK-BELT 218HSL

#### Features:

- 110 Ton Capacity
- Maximum Main Boom & Jib
- Transport complete crane with base section
- Drums with rope and self assembly device
- Less counterweights at under 100,000 lbs
- Rated capacity limiter with full color graphic display
- Powerful winch package with wet brake design
- 7-piece counterweight system design with innovative counterweight removal system



Link-Belt 218HSL





# International Union of Operating Engineers

## 2022 General Membership Construction Training Course Catalog

Visit <https://iuoe-itr.org/> to view prerequisites and register for classes

### LINK-BELT 75RT

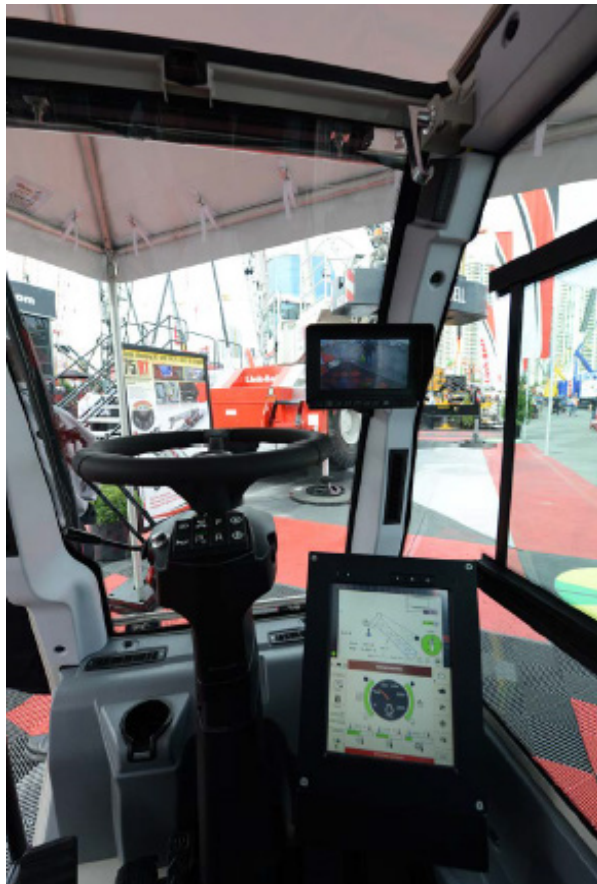
The 75RT impresses both on the road and off. It has outstanding reach for its tonnage class and a new operator's cab has elevated the experience of owning and operating a Link-Belt crane. It transports fully loaded with counterweight under 100,000 lbs. – and under 90,000 lbs. without counterweight. A six-speed transmission on the 75RT is powered by a Cummins Tier 4F QSB 6.7 270 hp (201 kW) diesel engine.

#### Features:

- 75 Ton Capacity
- 142' Main Boom
- Tilting Cab
- Pulse 2.0 Telematics



Link-Belt 75RT





# International Union of Operating Engineers

## 2022 General Membership Construction Training Course Catalog

Visit <https://iuoe-itrs.org/> to view prerequisites and register for classes

### **TADANO GR-750XL**

The Tadano GR750XL is a 75 ton rough terrain crane. It's 5 section full power boom has a maximum length of 141 ft. and its maximum jib length is 58 ft. It features a rugged frame and a hydraulic suspension system specially made to handle the toughest jobs and jobsites.

The Tadano GR750XL also features new Hello Net technology, allowing for easy access to job history, and also allowing the user to locate the crane at any moment. Asymmetrical Outriggers add another benefit by allowing operators and teams to stay safe while operating on jobs that require unconventional lifts. The onboard AML-C will slow stop when the crane is pushed to unsafe conditions, limiting safety hazards.

Two devices on the Tadano GR750XL help to reduce fuel consumption. The eco mode system reduces engine power when it isn't needed by 40%. The Positive Control System reduces fuel consumption while the crane is idle but still on by 60%. By limiting fuel consumption, cranes leave less of an impact on the environment and they save money.

#### **Features:**

- 75 Ton Capacity
- 140' Main Boom
- 42' Swing away



Tadano GR-750XL





# International Union of Operating Engineers

## 2022 General Membership Construction Training Course Catalog

Visit <https://iuoe-its.org/> to view prerequisites and register for classes

### TADANO GTC 800

The GTC-800 was built to meet the needs of power transmission, bridge and civil, and foundation construction, while also creating a broader appeal for general lifting applications.

Design of the GTC-800 incorporates a full-power, five-section telescopic boom, as well as Tadano winches, jibs, hydraulic cylinders, AML-C control system, and Hello Net telematics.

#### Features:

- 88 Ton Capacity
- 110' Main Boom



Tadano GTC 800