

What is Inner Imaging, PC?

Inner Imaging, P.C. offers advanced cardiac imaging called Coronary Calcium Scoring. Recognized as the Gold Standard in Heart Scanning, CCS is clinically proven to detect coronary artery disease (plaque) long before symptoms occur when it is preventable. For the past 88 years the number one cause of death in Fire Departments is Heart Disease.

Radiation?

ASIR (Adaptive Statistical Iterative Reconstruction) software reduces the dosage for the Heart Scan to **0.7 millisieverts**. This equals 2 months of radiation from the sun or 5 chest X-Rays or 8 round trip flights to CA.

Our advanced screening tests include:

- Heart Screening
- Lung Screening
- Full Body Screening
- Cancer Screening

Cost to members:

EXAM	FEE
Heart, Lung, Abdomen and Pelvis (Body Scan)	\$187.50

American Heart Association 2007

Recognized by the American Heart Association, Coronary Calcium Scoring is the most sensitive non-invasive test proven to assess your true risk of future heart attack.

The Saint Francis Heart Study

Published in the Journal of the American College of Cardiology July 2005, establishes the prognostic accuracy of Coronary Calcium Scoring greatly out-weigh that of the Framingham risk factor analysis. This landmark study is the largest randomized, population-based clinical study to date and involves more than 4,000 people representative of the American population.

Inner Imaging

LOCATION:

165 East 84th Street
New York, NY 10028
212-777-8900 Phone
212-991-5450 Fax

www.innerimagingpc.com



Inner Imaging, P.C.

*Early Detection of
Coronary Disease
for members of*

***Local 211
Operating Engineers***



Why This Test?

As in other things you do.....
If you catch the criminal or the victim early it saves lives. Catching coronary artery disease and lung disease early can save yours.

Here are some facts about CAD (Coronary Artery Disease)

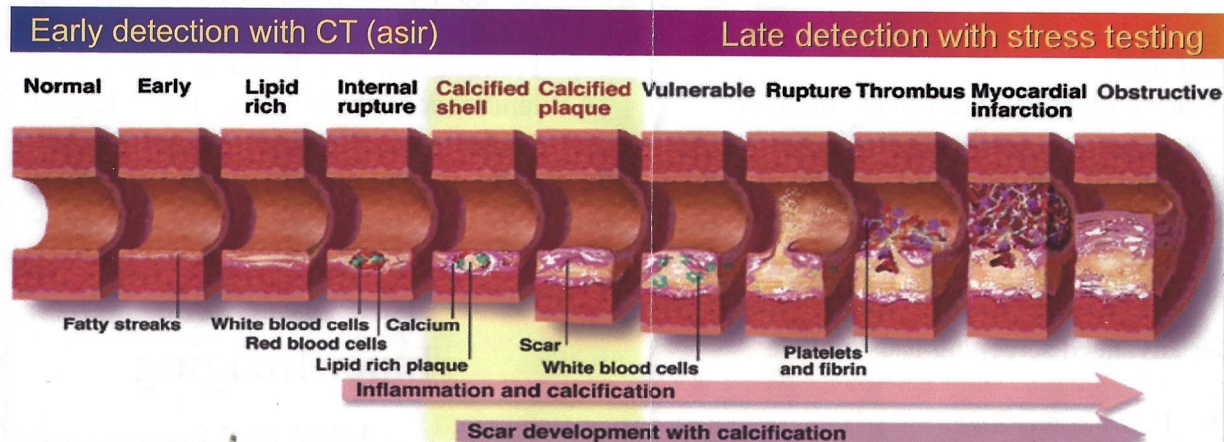
- 1,600,000 people will suffer a heart attack this year.
- For 500,000 people the first symptom of heart disease is death.
- One person per minute will die from a heart attack.
- Majority of heart attacks occur in people with normal cholesterol levels.
- 68% of heart attacks occur in arteries that are less than 50% blocked.
- 56% of those who pass their stress test have advanced coronary artery disease that will go undetected.

What is the best alternative?

Screening for Heart Disease using a Coronary Calcium Score can see coronary artery disease (plaque) as much as two decades before symptoms occur with an accuracy (sensitivity) of between 98-99%. It can find it early when treatment plans are optimized.

What is Atherosclerosis?

Coronary Artery Disease is called “the silent killer” because plaque can build up unknowingly in the arteries surrounding the heart. This condition called atherosclerosis or hardening of the arteries can block needed blood supply to the heart muscle. These plaques can also unexpectedly rupture causing a sudden heart attack.



Who should have the test?

Generally, men and women 35 and over, with one or more risk factors, should consider this Screening.

Stress testing detects advanced disease, when the artery is already blocked. Our Heart Scan can detect disease early when it is treatable, greatly reducing your risk of a heart attack.

Heart Scan Results

The results of this quick and easy Heart Scan provide you and your doctor with information that could save your life.

- True cardiac risk assessment
- Early detection of coronary plaque
- Determination of drug treatments
- Evaluate effectiveness of therapy

Risk Factors for CAD

- Family History of CAD
- Diabetes
- High Cholesterol
- High Blood Pressure
- Smoking History
- Lack of Exercise
- Obesity
- Stress