

collaborate without boundaries

creative.space®

powered by DigitalGlue

Managed Storage for Creatives

Collaboration | Workflows | Storage | Support

MADE SIMPLE



// ROGUE

Mobile NAS

Collaborate Anywhere

48TB HDD **OWN IT FOR \$4,795****



// AUTEUR

4K-Ready NAS Storage

Scalable Real-Time Performance for Small to Medium Teams

120TB HDD STARTING AT **\$995 PER MONTH***



// DEUS EX

Hybrid NVMe SSD and HDD

Medium to Large Teams and Image Sequences

120TB HDD STARTING AT **\$1,395 PER MONTH***



// BREATHLESS

All NVMe

Large Teams with High Demand

30TB SSD STARTING AT **\$1,795 PER MONTH***

* Monthly pricing based on 3 year contract billed annually
**For purchase only. Price includes 1 year of proactive support.

To learn more, email sales@digitalglue.com, call **888.519.2021**, or visit us at **creative.space**

Managed Storage for Creatives

No one knows the unique needs of your team better than you. That is why we have spent the last three years asking Creatives in the industry exactly what their requirements are and building a solution that meets them. creative.space is designed to make storage easy, taking the complex IT-centric tasks and simplifying them with a streamlined user experience backed by our DevOps support team.

Storage as a Service

- Hardware at Your Facility
- Intuitive Web and Desktop Software
- Proactive Support
- Fixed Monthly or Annual Payments

The creative.space Difference

- No IT Experience Required
- Consistent Support with Ongoing Dialog
- Flexible Contracts that Scale Based on Your Needs
- In-house Software Development Team

Collaborative Storage

Finally, a storage solution that adapts to the ever changing needs of creative teams. At its core, creative.space is a service built to give the time lost dealing with hardware and complicated software back to creatives so they can do what they do best: **create**.



Speed

- Real-Time Playback
- Render FPS
- Copy, Move, and Delete



Ease of Use

- Intuitive User Experience
- Support For Creative Apps
- Workflow Tools



Sustainability

- Proactive Support
- Hardware Maintenance
- Data Migration

Why We Chose ZFS for our File System

ZFS is an enterprise class file system and logical volume manager that is scalable and includes extensive protection against data corruption. It eliminates many of the deficiencies found in existing file systems and hardware RAID devices.

Multi-Tier Storage Strategy

The DigitalGlue team works alongside clients to build a solution that fits their unique creative, budgetary, and security needs. Transition seamlessly as capacity requirements grow while maintaining data integrity with the help of our dedicated support team.



Camera Media



Shuttle Drives



Production Storage



Archive



Cloud

Monthly Payments

Get the storage you need today with the ability to expand and upgrade based upon future needs. A creative.space service contract includes hardware, software, and support with options to pay monthly or annually.



1, 2, 3, or 5 Year
Commitment



Flexible Contract



Full Warranty
On-Site Spares Kit



Modular Upgrades

Latest Technology

Our architecture was built from the ground up to take advantage of the latest software and hardware technology to create the next generation of storage. All units ship with the current version of creative.space software, and any future releases are included in your contract and installed as soon as they become available.



12 GB/S SAS



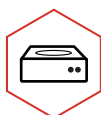
10/25/40/100GbE



Self-Healing



128-Bit File System



10/12/16 TB
Helium Filled HDDs



3.2/7.68/12.8 TB
NVMe SSDs



Multi-Core CPU
Load Balancing



DDR4 ECC Random
Access Memory

Proactive Support

Every system has built-in monitoring that tracks thousands of metrics triggering alarms, enabling remote support to pre-emptively diagnose and address potential bottlenecks and failures.



Throughput Analysis

Multi-tiered alarms notify support immediately if systems are being overtaxed.



S.M.A.R.T. Testing

Drive failures can be predicted months in advance and gracefully replaced.



Bandwidth Monitoring

Metrics provide insight into settings not configured properly which could result in dropped packets.



Planning For Growth

We work with you to scale efficiently and avoid the pitfalls of managing large datasets.

Client Success Stories

Post Production Services



"We go above and beyond [for our clients] and didn't think it was too much to expect the same from our storage vendors, but it took DigitalGlue and creative.space to find that level of service. They came on-site, trained our staff, and helped us understand how the product works and what makes it unique. They gave us the kind of service you'd expect if you were making a huge investment or dropping a pile of cash, but this is an affordable monthly fee – and still DigitalGlue delivered spectacularly."

– **Steve Bannerman**
CEO, Local Hero Post

Local Hero Post

Local Hero is a trusted full-service boutique of numerous high-profile clients such as HBO, Netflix, Lionsgate, and Apple with credits that include the recent movie Home Again starring Reese Witherspoon, and HBO series Big Little Lies and Sharp Objects. The post house is now working almost entirely on 4K projects and is starting to color HDR content as well. Steve Bannerman, Local Hero CEO, chose creative.space's //DEUS EX hybrid NVMe SSD and HDD media storage solution that balances solid state and spinning disk technology with a fully optimized internal architecture to provide seamless playback. Designed for uncompressed, high-resolution, end-to-end post-production workflows, //DEUS EX eliminates the need for separate online and nearline systems, allowing the entire team to work with collaborative workflows like those available in DaVinci Resolve and Adobe Creative Cloud.

Concerts + Events



"Our film crew of over 700 members operates 24 hours a day for 5 days capturing thousands of hours of content, from over 200 performances and an additional 38 crews filming mini-docs, interviews, and art pieces. There are over 240 camera cards being transferred daily, and the system ran smoothly the entire production"

– **Ryan Stiles**
Head Producer, Pickathon

Pickathon

Pickathon is a three-day music festival taking place every August at Pendarvis Farm in Happy Valley, near Portland, Oregon. The event began in 1998 as a bluegrass festival and has since expanded into a discovery festival for every type of music with hip-hop, punk, heavy metal, country, and indie rock. Over the course of five days, including setup and breakdown, a massive crew collects thousands of hours of content. Designed to empower creative teams to collaborate in real-time with high-resolution media, the //AUTEUR was the perfect solution to handle Pickathon's live event needs. The system built for Pickathon was the entry-level //AUTEUR, which comes half-filled with (12) 10TB drives for a total of 120 TB of RAW capacity and plenty of room to grow. The monitoring tools included in the creative.space web app UI allowed Pickathon to monitor usage in real-time, quickly identify any bottlenecks in their workflow, and keep production flowing efficiently.

"The //DEUS EX has met our expectations in terms of speed, connectivity, features, and security. Our main goal was really to get a connected storage solution that would allow people across our different verticals to utilize the spaces in their respective editing and finishing software. We need it to work with Adobe, Avid, and DaVinci seamlessly and grant administrators the controls they need to make sure the media is managed properly, which it absolutely does."

– Chase Logan

Head of Post Production, Brat TV



Content Creators

Brat TV

Brat TV is a digital network and production company that draws its name from "The Brat Pack" of '80s cinema. Its TV-quality programming such as Chicken Girls, Total Eclipse, and Mani are posted every day to YouTube and tailored to the Gen-Z audience. The Brat TV YouTube channel has more than 3.5 million subscribers. The DigitalGlue and Brat TV teams worked closely together to design and implement a creative.space solution that would seamlessly fit into their existing workflow, keep the AEs in control of media interchange, and replace the tedium of drive management with a shared storage space. Since the installation, projects are turned around quicker and more iterations can be made, resulting in a higher-quality final output. The time previously spent managing data between storage devices is now invested into creative output. By connecting marketing directly into the post production process, Brat TV has been able to be more strategic and explore additional forms of monetization.

"Seeing the well-designed management UI is enough to make you say yes, but then when you find out that you get the hardware and support for about the same cost as some companies' SLAs only, the choice is a no brainer."

– Larry Haley

VP of Engineering and Operations, Trinity Broadcasting Network



Networks

Trinity Broadcasting Network

Trinity Broadcasting Network (TBN) is the world's largest Christian television broadcast group, with 32 international networks reaching every major continent. TBN needed to add 1.2 PB of storage capacity without the high costs of scaling their existing clustered system. DigitalGlue's creative.space platform provided the perfect solution, a //DEUS EX with two //EXPANSION chassis, delivering industry-leading performance at a fraction of the cost of clustered solutions by removing the need for redundant hardware. TBN offloaded JUCE TV Network's content from their existing near-capacity storage onto the //DEUS EX for ongoing productions. The data migration utilizes creative.space's deduplication functionality to ensure maximum efficiency by providing a 1:1 duplicate on the front end, while reducing redundant data under the hood. The //DEUS EX connects to a network switch via 40 GbE, which connects to workstations via 10GbE over Cat6A.

Client Driven Design

Shared Spaces

Shared Spaces give users the ability to divide their storage into virtual partitions and take advantage of a system's full performance and capacity. Quotas and Reservations give users control over system usage while snapshots protect data from accidental deletion and ransomware attacks.

The screenshot shows the 'Space Configuration and Tuning for twelvebay/newport-beach' interface. It features a sidebar with 'Main Options' and 'Information' sections. The 'Main Options' section includes settings for quota, reservation, compression, atime, refquota, and refreservation. The 'Information' section displays creation, used, available, referenced, compression, and usedby snapshots. A 'Spaces' list on the left shows various SMB shares. A 'View Connected Users' button is visible. A modal window on the right displays a table of 11 Spaces with columns for Share Type, Active, Available, and Snapshots.

Spaces	Share Type	Active	Available	Snapshots
nfs://rogue03.local/opt/mounts/qg-mobile-3rautor	NFS	1.91 MB	19.25 TB	No Snapshots
smb://rogue03.local/compression	SMB	529.36 MB	19.25 TB	8 Snapshots
smb://rogue03.local/codememo	SMB	1.10 TB	19.25 TB	3 Snapshots
smb://rogue03.local/final-cut-pro	SMB	1.31 MB	19.25 TB	No Snapshots
smb://rogue03.local/jensdest	SMB	66.44 GB	19.25 TB	2 Snapshots
smb://rogue03.local/newport-beach	SMB	154.75 GB	1000.00 GB	1 Snapshot
smb://rogue03.local/sample-content	SMB	172.48 GB	19.25 TB	2 Snapshots
smb://rogue03.local/sneakylog	SMB	197.03 GB	19.25 TB	No Snapshots
smb://rogue03.local/space-for-copy-delete-testing	SMB	793.76 GB	19.25 TB	2 Snapshots
smb://rogue03.local/thomases2	SMB	32.65 GB	19.25 TB	1 Snapshot
smb://rogue03.local/transfer-from-rogue02	SMB	6.29 TB	19.25 TB	No Snapshots

Built-in User Management & Permissions

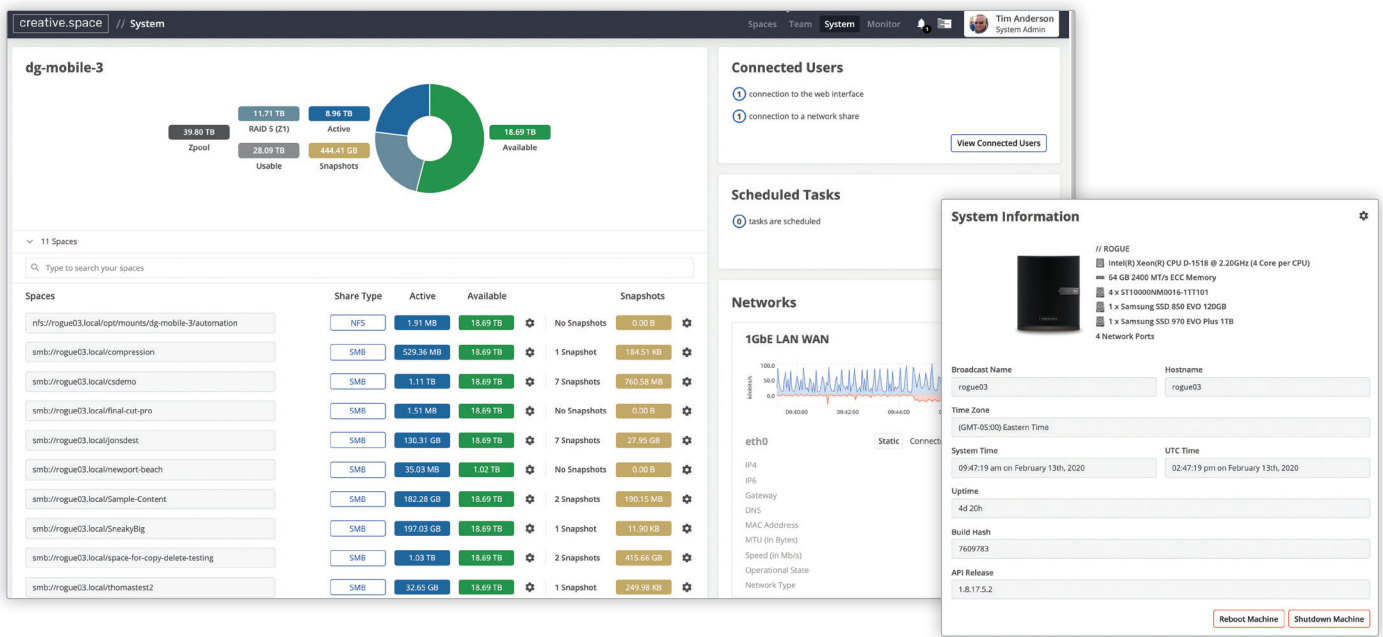
An enterprise LDAP user management authentication server is built into every system to give Administrators control over who can access Spaces, folders, and files without the need for an external dedicated server. Administrators can also see connected users and what they are accessing, as well as create groups to simplify permissions among users.

The screenshot shows the 'Team' management interface. It features a sidebar with 'Groups', 'Users', and 'Roles' sections. The 'All Users' section displays a list of users with their profiles, roles, and contact information. A modal window on the right shows the details for user 'tbafromca', including their role, email, phone number, and connections.

User	Role	Email	Phone Number
tbafromca	System Admin	tim.anderson@digitalglue.com	(949) 388-9078
nickanderson	System Admin	nick.anderson@digitalglue.com	(949) 388-9078
joanarc	Team Leader	ja@creative.space	(555) 555-5555
seanbusby	System Admin		
curtcobain	Team Member		
cecildemille	System Monitor		

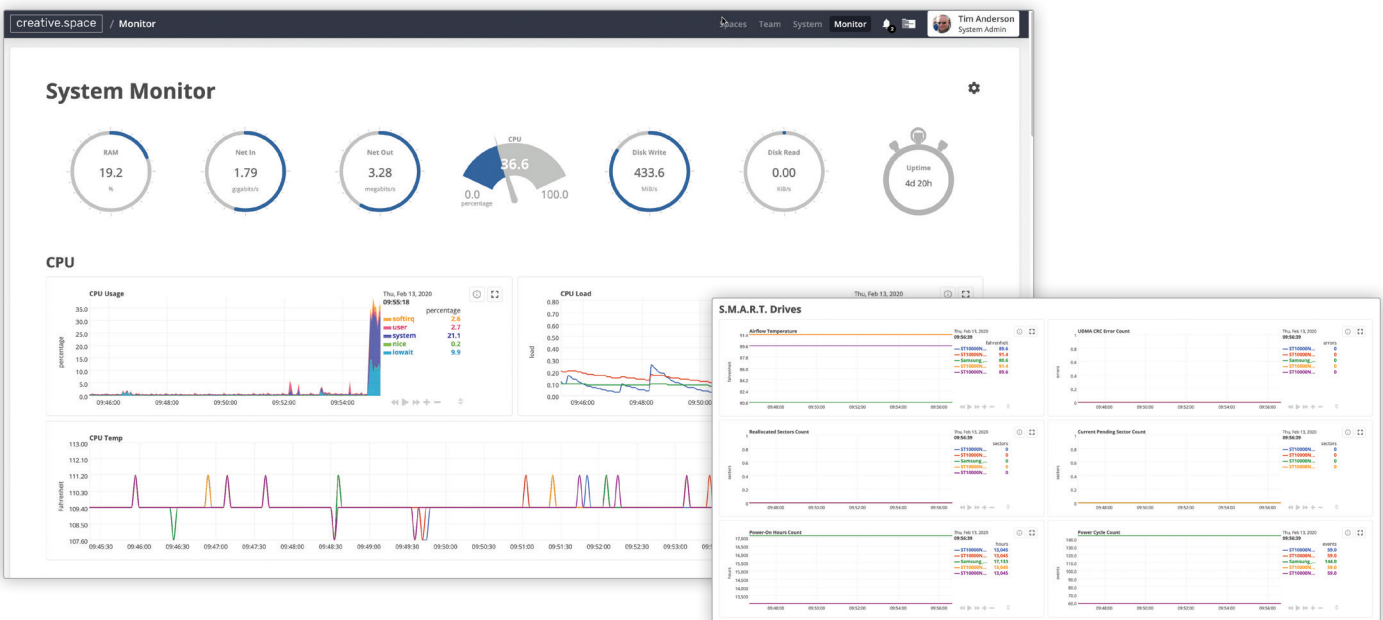
Streamlined System Management

A comprehensive system dashboard lets users quickly understand storage capacity and availability, connected users, scheduled tasks, network statistics, and system information.



Monitoring

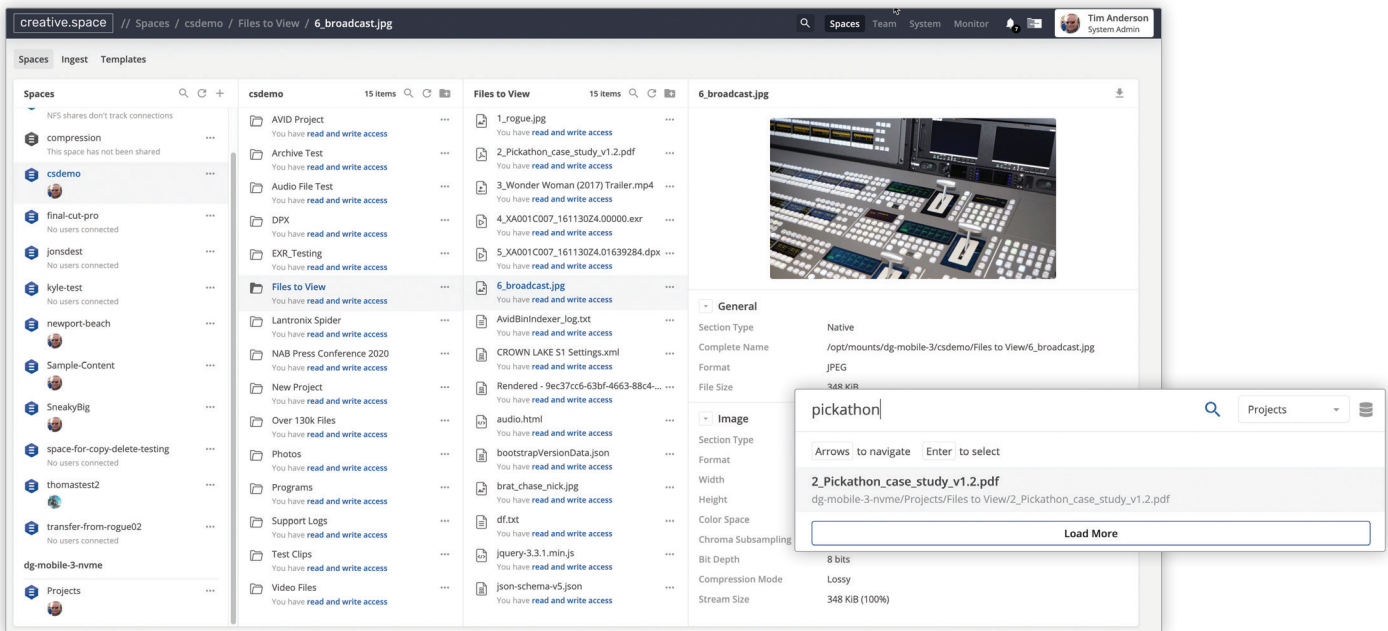
Thousands of metrics are captured every second to provide our proactive support team valuable insight into the health of a system. The intuitive system monitoring dashboard gives users the ability to diagnose failures and bottlenecks quickly.



Client Driven Design

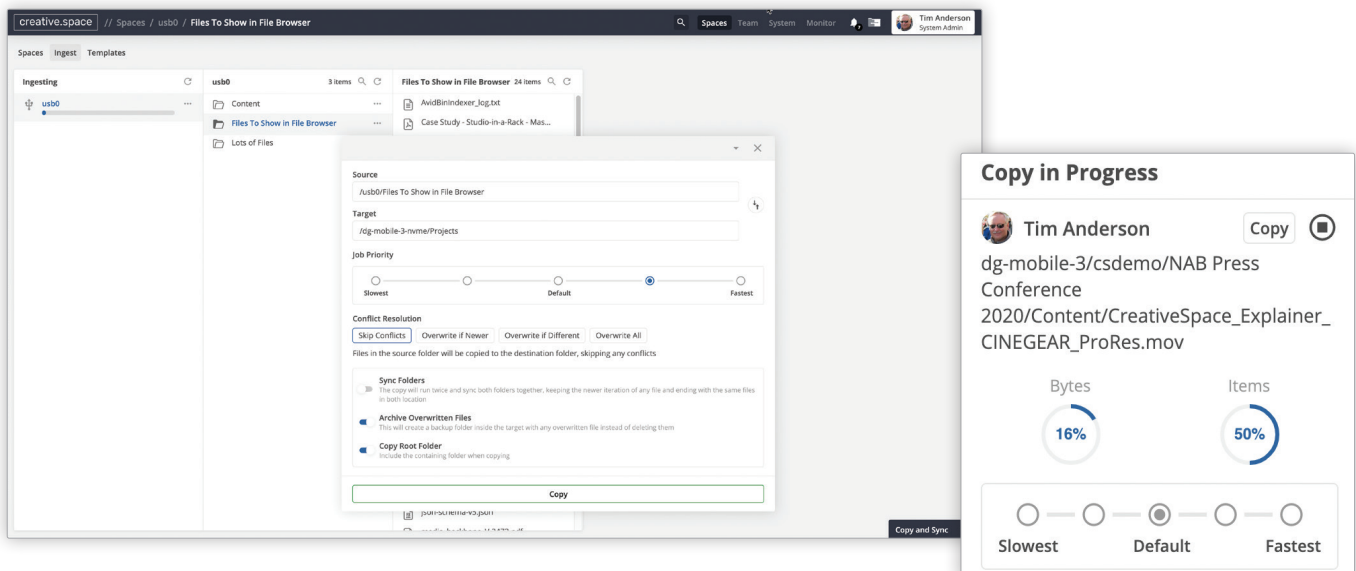
File Browser

Create, rename, and delete folders; assign permissions, copy links, compare and sync folders, apply folder structure templates, preview files, view metadata, and download files through the file browser. Easily find folders and files with built-in search functionality. Explore Spaces on a web browser with unique, enhanced keyboard navigation.



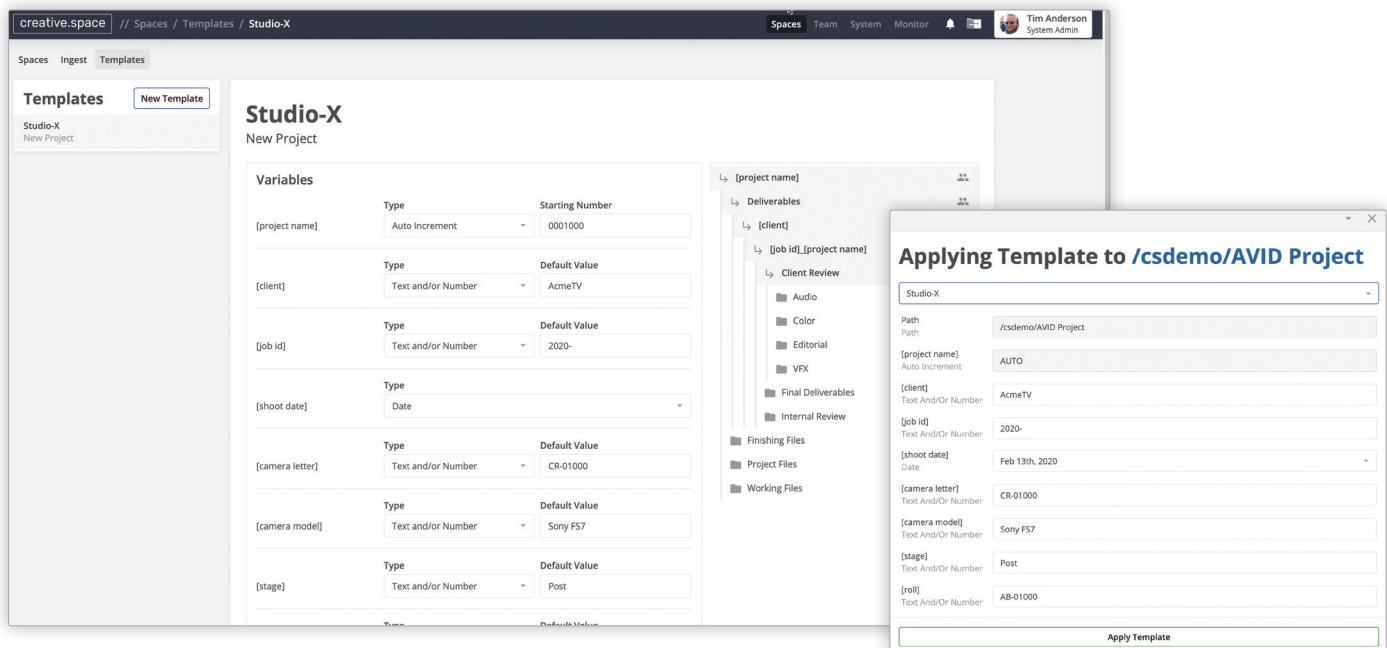
Compare and Sync

Powerful conflict resolution options allows users to compare and sync files between Spaces and attached USB devices. Need to consolidate project folders or ingest new files from a camera card that wasn't wiped first? No problem.



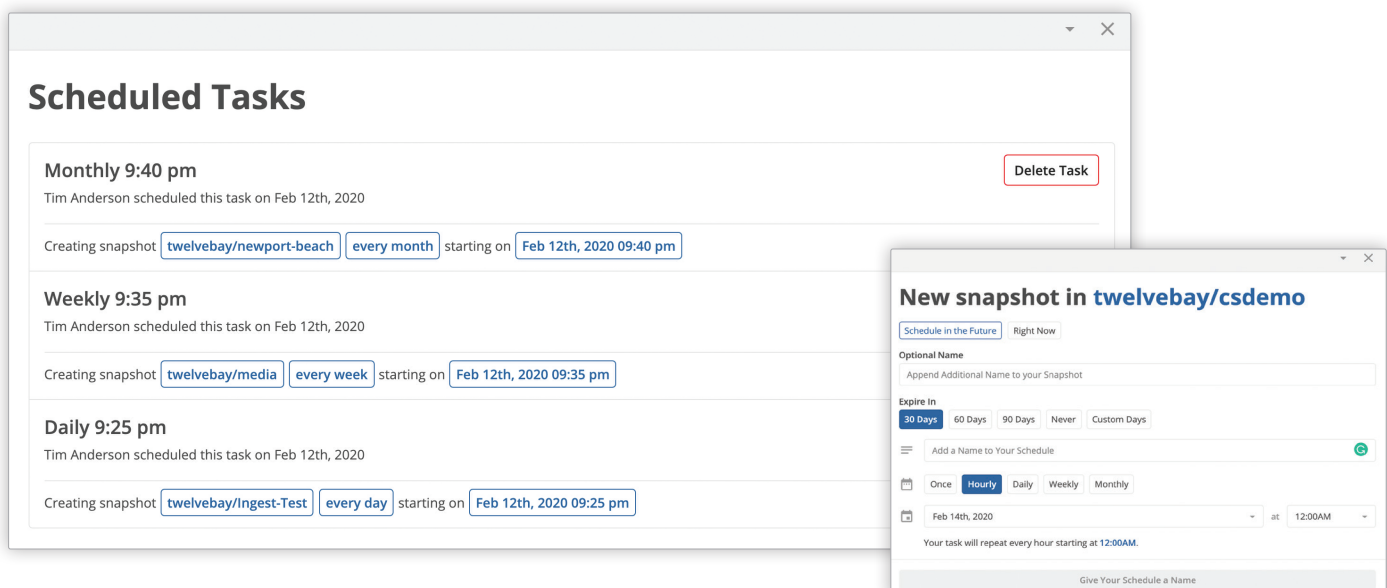
Folder Structure Templates

Easily manage projects by building folder structure templates. creative.space gives users a temporary storage mount to drag and drop folders and files. When creating a template, anything put in [brackets] becomes a variable and is applied to all files in designated folders. Administrators can then assign users and group permissions to each folder.



Scheduling Snapshots and Tasks

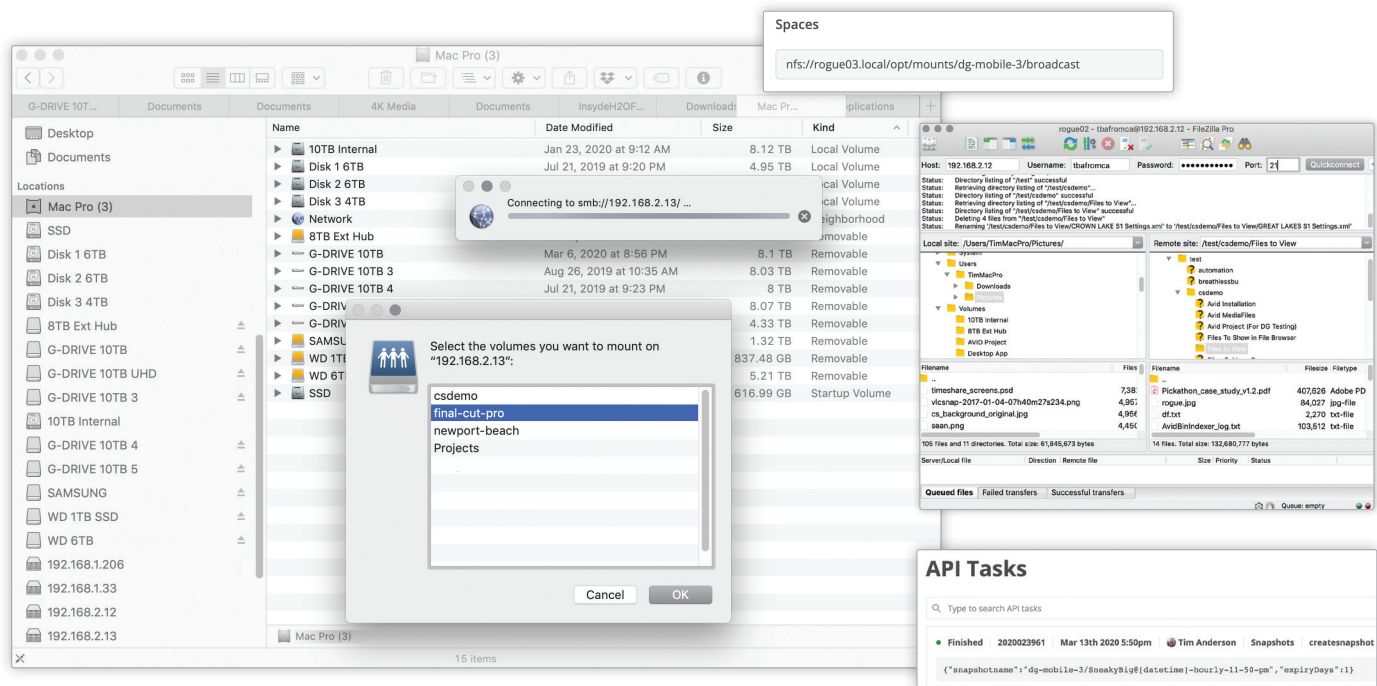
The integrated system scheduler allows users to create tasks for features like hourly, weekly, and monthly snapshots with automatic deletion after a set period of time.



Client Driven Design

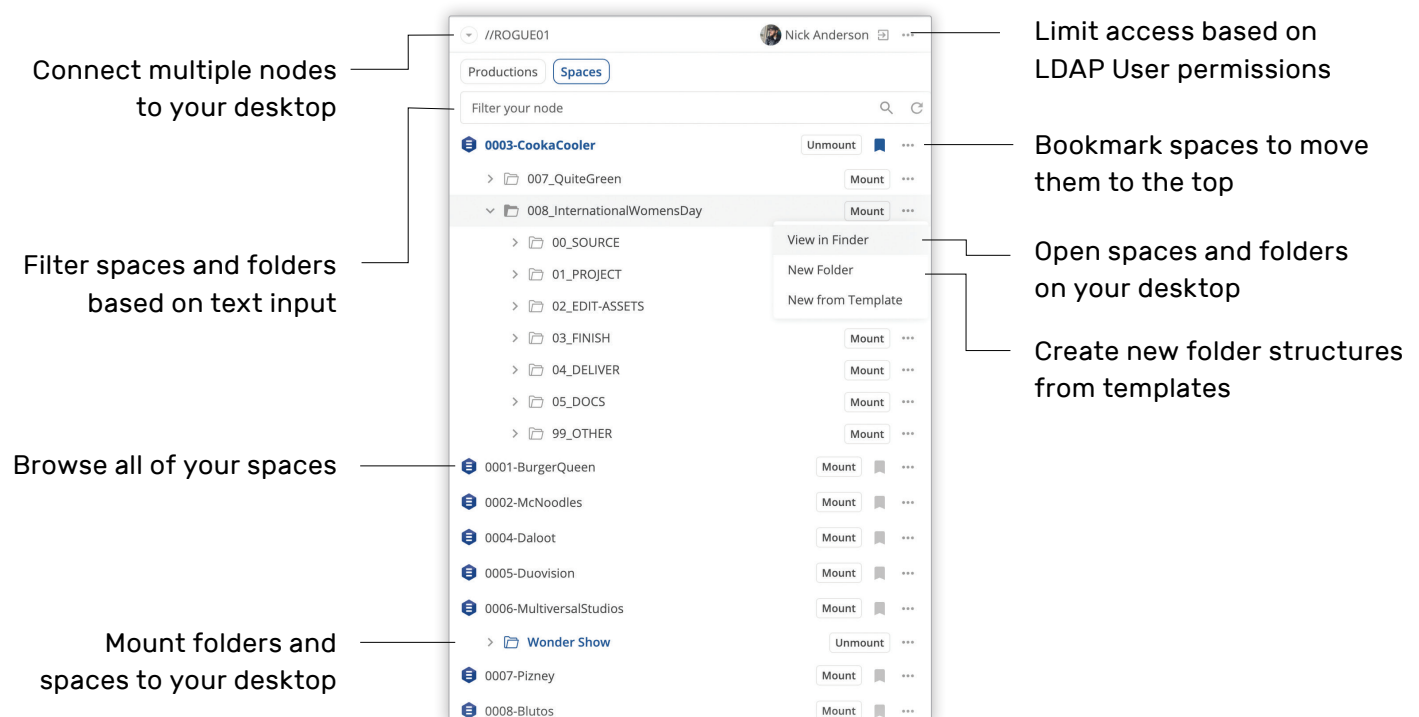
Get Connected

Mac, Windows, and Linux clients interact with the creative.space storage using industry-standard file protocols (SMB, NFS, FTP, or the REST API).



Desktop App

The creative.space desktop app makes it easy for creatives to connect to Spaces and collaborate without managing IP addresses.





//ROGUE

Portable, yet powerful. A compact enterprise storage server for a small team, capable of supporting 4K and compressed 8K workflows. With per-user speeds up to 1 GB/s, this mobile NAS is perfect for 2-4 users (expandable with a switch). The //ROGUE is the only creative.space system available for purchase, and comes with the same software as our enterprise systems as well as a year of free support.



//AUTEUR

Powerful, yet affordable. The //AUTEUR sets a new bar for entry-level storage by providing enterprise hardware that is 4K+ capable at a price point competitive with prosumer systems. Easily scale performance, capacity, and even density as needed. We build a custom-tuned appliance for your workflow.



//DEUS EX

The “Do Anything” Storage. If //AUTEUR is the starting point, the //DEUS EX is the finish line; adding up to 61.4 TB of NVMe SSD storage along with upgraded CPU and RAM to support real-time playback of Image Sequences. This hybrid system provides two tiers of storage in a single server.




//BREATHLESS

Performance at scale. The //BREATHLESS is ideal for high-performance and Image Sequence workflows, with 24 bays that can be filled with 7.68 or 12.8 TB NVMe SSDs. Each drive connects over PCIe with speeds up to 3 GB/s, providing performance that rivals much larger clustered systems, but at a fraction of the cost.

ALL SYSTEMS	FORM FACTOR	CAPACITY (RAW)	CONNECTIVITY	PERFORMANCE (PER USER)	EXPANSION
//ROGUE	DESKTOP	48 or 64 TB HDD	1 GbE (2x) and 10 GbE (2x)	Up to 1GB/s	N/A
//AUTEUR	SERVER (4RU)	120-384 TB HDD	Up to 12 1/10/25/40/100 GbE	Up to 3GB/s	Up to 3 per controller
//DEUS EX	SERVER (4RU)	120-384 TB HDD + 12.8 - 51.2 TB NVMe SSD	Up to 12 1/10/25/40/100 GbE	Up to 4GB/s	Up to 3 per controller
//BREATHLESS	SERVER (2RU)	30.4 - 307.2 TB NVMe SSD	Up to 6 1/10/25/40/100 GbE	Up to 8GB/s	N/A



creative.space®

powered by DigitalGlue 

The Top 10 Reasons to Choose creative.space

1. The creative.space enterprise-class collaborative storage is performance-tuned specifically for media production workflows.
2. Control dynamic access to network shares, the web, and applications based upon extended user, group, and role-based rights powered by a built-in LDAP server.
3. creative.space's comprehensive system dashboard lets you quickly understand storage capacity and availability, connected users and what they are accessing, scheduled tasks, network statistics, and system information all on a single web page.
4. The web-based Spaces explorer facilitates rapid searching, renaming, deleting, previewing, and downloading of files.
5. Built-in real-time performance and health monitoring provides insight into thousands of system metrics, charts, and alarms.
6. On-Premise Managed Storage as a Service (SaaS) provides clients the freedom to upgrade to the latest technologies, reduce capital expenditures, and rely on a controllable fixed monthly cost for hardware, maintenance, and support.
7. DigitalGlue's in-house software development team is focused on writing code to automate the time-wasting manual steps in your daily workflow.
8. Folder and file templates automate the creation of new projects with user-defined variables and custom permissions
9. Never lose valuable files to accidental deletion or ransomware again. Snapshots provide a safe way to recover data by creating a read-only backup.
10. Save network bandwidth and computer resources with creative.space's intelligent web-based interface to ingest, copy, sync, and archive data between pools, spaces, and external USB devices.

To learn more, email sales@digitalglue.com, call **888.519.2021**, or visit us at **creative.space**