

# House & Land Packages



## Bayside A

Stirling Green Stage 9  
Lot 57 Meyrick Close

4 bedrooms 2 bathrooms 2 car spaces 237sqm 595sqm

The Bayside with Coastal façade is a cleverly laid out family home that offers something for the entire family.

Offering Four spacious bedrooms two and a half bathrooms and large chefs' kitchen, generous living zones including media room the Bayside is sure to impress your family.

**Sovereign Hills  
Land Sales**

**02 6581 1711**  
[sovereignhills.com.au](http://sovereignhills.com.au)

**\$844,780\***  
(package)

**L**  
LEWIS  
LAND  
GROUP

# House & Land Packages



PYCON

Builders · Designers

## The Bayside

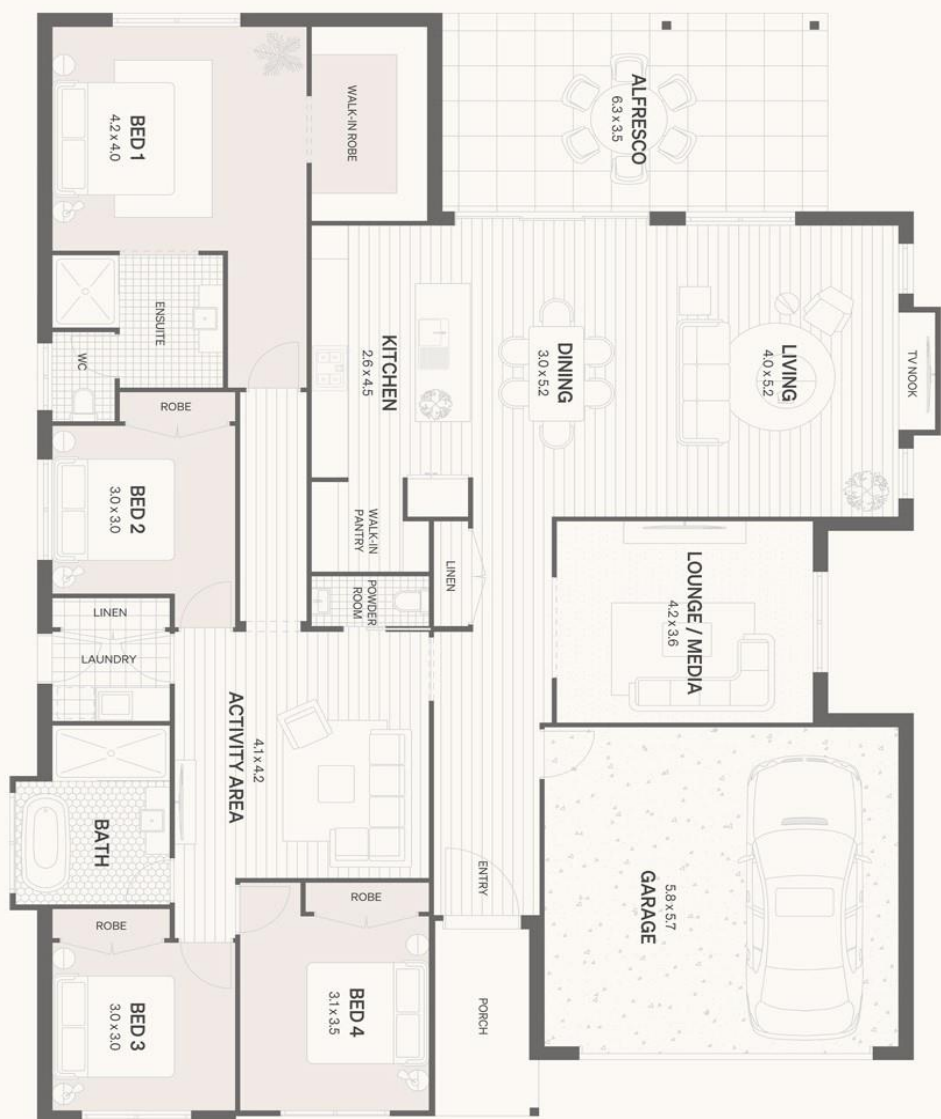
The large kitchen, complete with generous walk-in pantry, is the ideal workspace for the chef of the family to prepare the daily meals whilst overlooking the open plan living areas that spill out onto the large alfresco area. The kids are taken care of, with their dedicated space located just off the bedrooms. The master suite is located at the end of its own private hallway and features an enormous walk-in robe and spacious ensuite.

## House Dimensions

Total Area 237 sqm

Total Width 15.2 (m)

Total Depth 19.8 (m)



\*Disclaimer: Design is concept only. See builder for package inclusions. Package subject to land availability and purchaser securing the land through Sovereign Hills directly.