

BOARD ROOM

CAPACITY: **20** • SQFT: **550**
MINIMUM RENTAL: **2 HOURS**

STARTING AT \$300

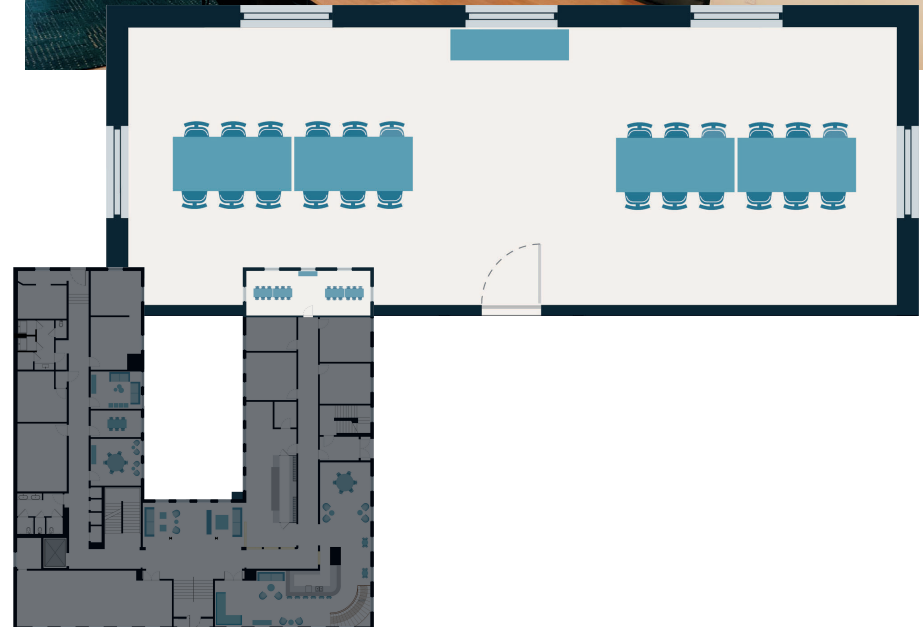
Gather your team or clients around one long walnut mid-century board room table or separate into four separate break out sessions. Feel free to request additional pop-in seating for overflow guests. This room was named to represent the importance a Board of Directors provides to both small and large companies. Step up to a rolling whiteboard and plan your next business venture.

WHAT'S INCLUDED IN THE SPACE

- Four walnut mid-century tables
- Black leather mid-century executive chairs
- 7' movable white board
- Gigabit internet
- Air conditioning
- All-gender and ADA accessible restrooms
- Water bottle filling station

ADDITIONAL OFFERINGS AVAILABLE

- Bluetooth Polycom Phone
- Easels (3)
- Food & beverage service upon request



FIRST FLOOR

CONTACT US TO DISCUSS CONFIGURATIONS DESIGNED TO
SUIT YOUR EVENT NEEDS: EVENTS@LABOURTEMPLE.COM