



YOUR FLEET, MADE SMART.

Digital solutions to maximise your productivity and reduce your costs while minimising your environmental impact.

For construction, mining, and quarrying.







UNLEASH THE DIGITAL POTENTIAL

SmartFleet^{DX} is a comprehensive approach to drive productivity, reduce costs, and enhance environmental and safety standards, reshaping the industry landscape.

SmartFleet^{DX} provides state-of-the-art hardware, software, and communication services, all tailored to meet your unique requirements.

WHY DX ?

It signifies 'Digital Transformation', the integration of digital technology into all areas of the business.

DX includes technologies such as sensing technology, the Internet of Things (IoT), data analytics, applications, software, networking capabilities, data, and Artificial Intelligence (AI).

The result? Increased efficiency and agility offering measurable advantages for your teams, customers, and shareholders.

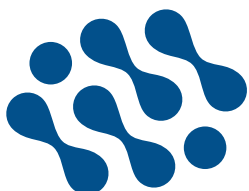
OUR MISSION

SmartFleet^{DX} strives to become the one-stop-shop and implementation partner for job site and mobile asset transformation, helping its mining, quarry and construction clients to maximize their outcomes while minimizing costs and environmental impact.

We are committed to innovation, excellence, and customer success, and strive to be a driving force behind the digital transformation of the industry.

MULTI-BRAND SOLUTION

SmartFleet^{DX} technology solutions aren't linked to any manufacturer and is compatible with all brands which empowers your industry to benefit from the perks of digital transformation in a single suite.



SMARTFLEETDX.COM







OUR COMMITMENT, YOUR BENEFITS.

Usage data and connected machines for faster decision-making and proactive management of your assets, fleet, and remote site operations.



BOOST YOUR PRODUCTIVITY

Optimise machine usage, improve cycles, enhance operators' skills, and ramp up job site efficiency to increase profitability.



CONTROL YOUR COSTS

Optimise production and costs, prolong asset lifespan with health monitoring, and reduce Total Cost of Ownership (TCO) through predictive maintenance.



SAFETY FIRST

Leverage data and connected machines to decrease risks of errors and simplify operator's onboarding.



REDUCE IMPACT

Monitor and reduce your fuel, oil, and CO₂ impact, and optimise operations to minimise construction materials.

Make your machines smarter
and safer with embedded
digital devices.

Manage your entire fleet
digitally, regardless of the
brand. Access equipment
details anywhere, anytime.

Centralise fleet
data and insights
for enhanced
productivity, cost-
efficiency, safety,
and environmental
footprint.

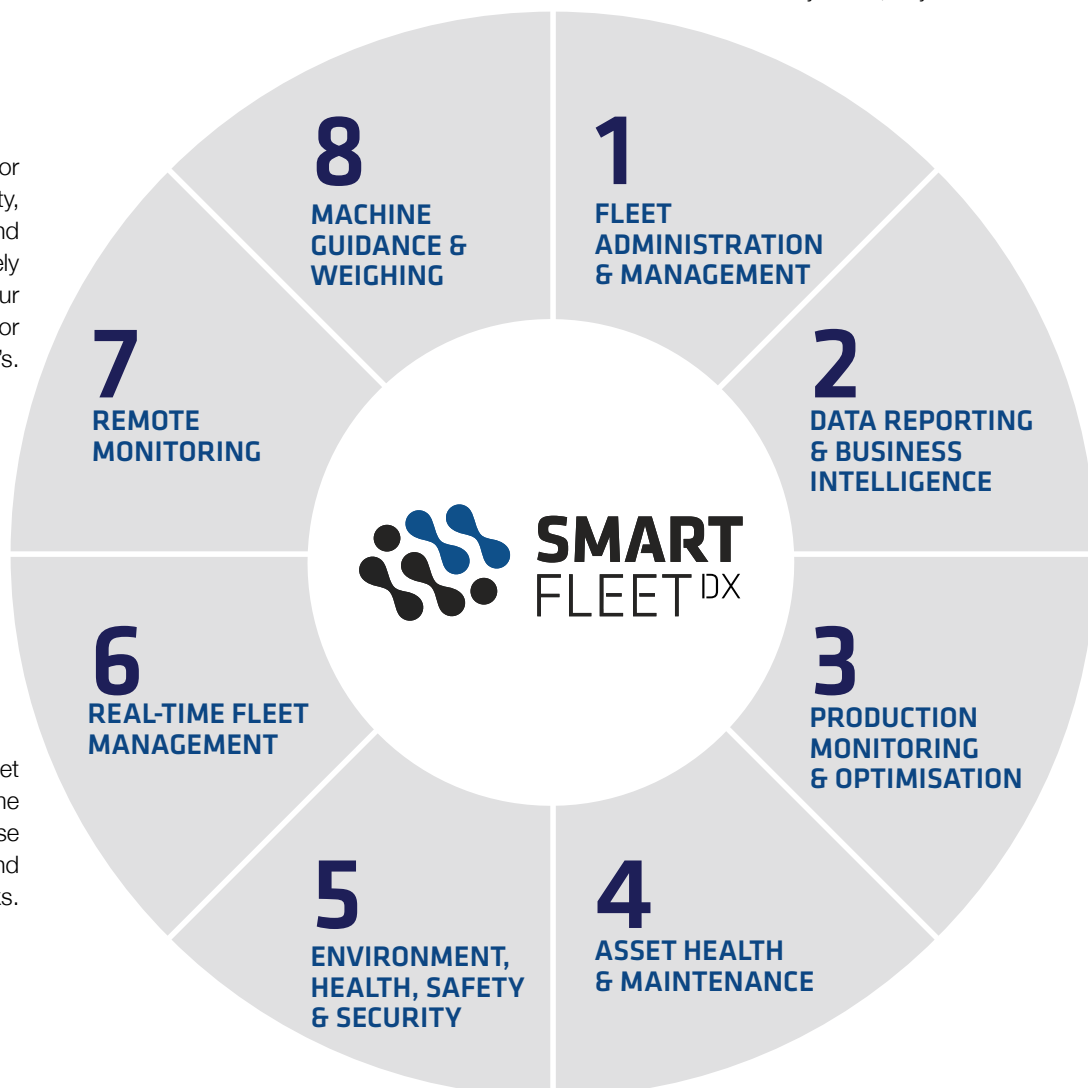
Gain insights into
cycles, payload,
and consumption
to boost
productivity.

Track equipment's health
and usage data to improve
uptime and lifespan while
reducing TCO.

Understand
machine usage and
operator's behaviour
to promote safe
practices.

Monitor
machine activity,
productivity, and
health remotely
from your
headquarters or
SmartFleet's.

Monitor fleet
activities in real-time
to optimise
performance and
minimise risks.

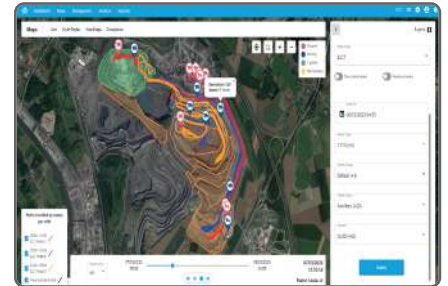


360° SOFTWARE SOLUTIONS



SmartFleet^{DX} Manage is a powerful digital platform that centralises all your equipment data, regardless of the brand.

It enables you to easily access and maintain important documentation, history, and the location of your equipment from anywhere at any time, maximising peak efficiency.



SmartFleet^{DX} Live is a powerful data driven mine management tool designed specifically for the mining and quarrying industry. It enables you to follow activities in real-time, to stay on track and to reach your production goals. Advanced asset tracking and performance analysis technology provide valuable insights into your equipment's health, regardless of the brand or model.

The result? Optimised efficiency, reduced downtime, and more control of your mining operation than ever.

The optimum Fleet Management System

Mining



Quarrying



Construction





SmartFleet^{DX} Insights is a cutting-edge business intelligence platform designed specifically for mining, quarrying and construction companies. It enables you to easily monitor the status and performance of your fleet, and overall productivity, as well as to track your carbon footprint.

The result? Data-driven decisions that optimise efficiency, maintenance, and productivity across your entire asset base, regardless of the brand or model of your equipment.



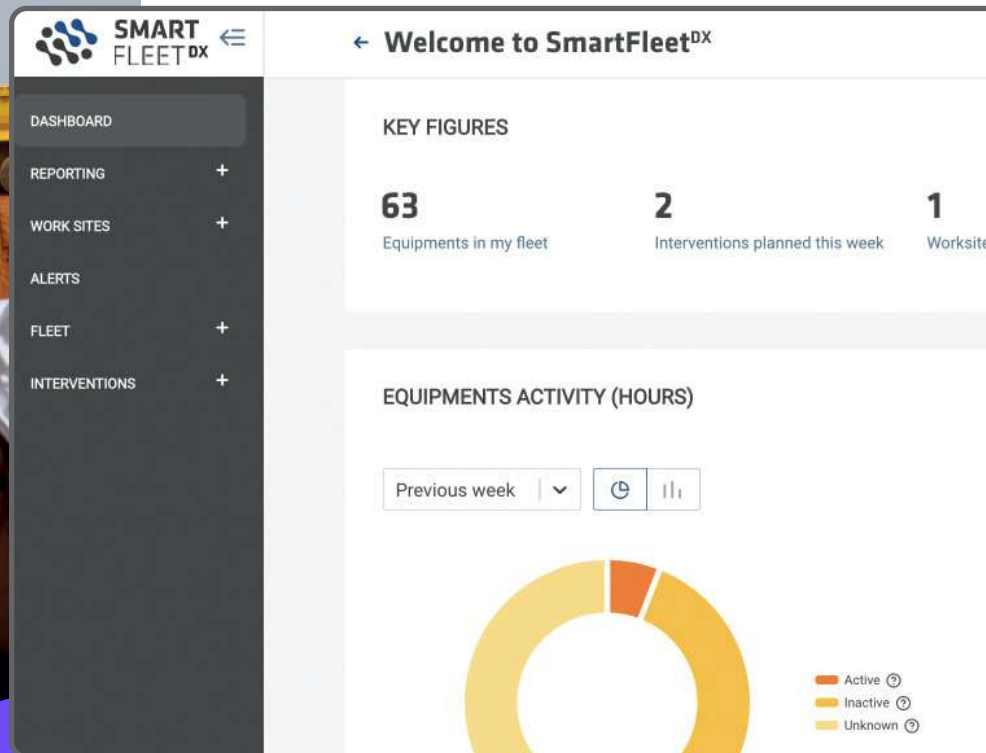
iVolve is a suite of complementary digital technology solutions designed for mining as well as quarrying production and vehicle maintenance. Focused on delivering process and efficiency improvements, iVolve helps mining companies increase productivity, reduce costs, and minimise risk. Its safety and vehicle maintenance solutions make it ideal for large size mines.

The result? Valuable operational insights to help you make informed decisions that drive success.

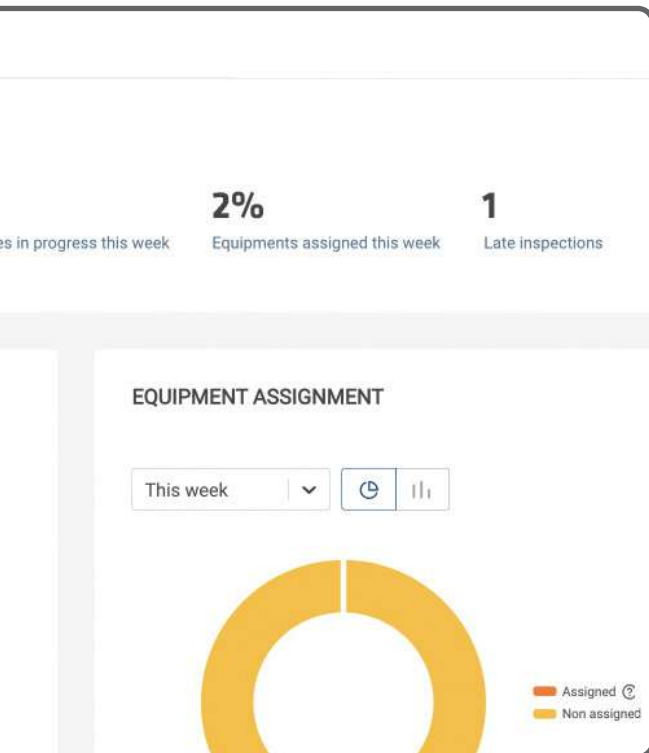


TOPCON and SmartFleet^{DX} offer a suite of innovative integrated surveying, guidance and weighing equipment as well as software and mobile solutions compatible with all site conditions and easy to manage. This enable customers to improve jobsite efficiency, operation costs, productivity, safety, traceability, and compliance.





ALL YOUR FLEET
INFORMATION AT
YOUR FINGERTIPS,
ONLINE, FROM
ANYWHERE, AT
ANYTIME, WITH A
DIGITAL TWIN.



**A powerful digital platform that centralises
all your fleet information for easy access
and improved efficiency.**

Unique benefits

- ✓ Maximise machine uptime and ROI.
- ✓ Save time on the planning and administration of your fleet.
- ✓ Reduce equipment maintenance time by anticipating machine needs.
- ✓ Enable easy equipment sharing between different job sites or other companies.



360° OVERVIEW

A comprehensive overview of your machine's operating hours, idle time, maintenance schedule, and geolocation.

- ✓ Fleet planning overview
- ✓ Fleet maintenance overview
- ✓ Fleet operating time overview
- ✓ Basic telematic data
- ✓ Maintenance alerts

DIGITAL TWIN

Centralised equipment administration access that enables you to manage certification and equipment allocation from your smartphone or computer.

- ✓ Equipment digital twins providing information on their health, maintenance needs, planning and operating hours
- ✓ A centralised data platform for convenient real-time access to equipment documentation and history logs

COMPATIBLE WITH





AD HOC DOCUMENT EXPORTS

Easily share equipment data and dedicated maintenance information with operators and maintenance engineers.



SMARTFLEET^{DX} SUPPORT

Get remote and onsite support from SmartFleet^{DX} representatives to solve all your challenges and issues as quickly as possible.

- ✓ Maintenance planning advice
- ✓ Remote application support



AND MORE

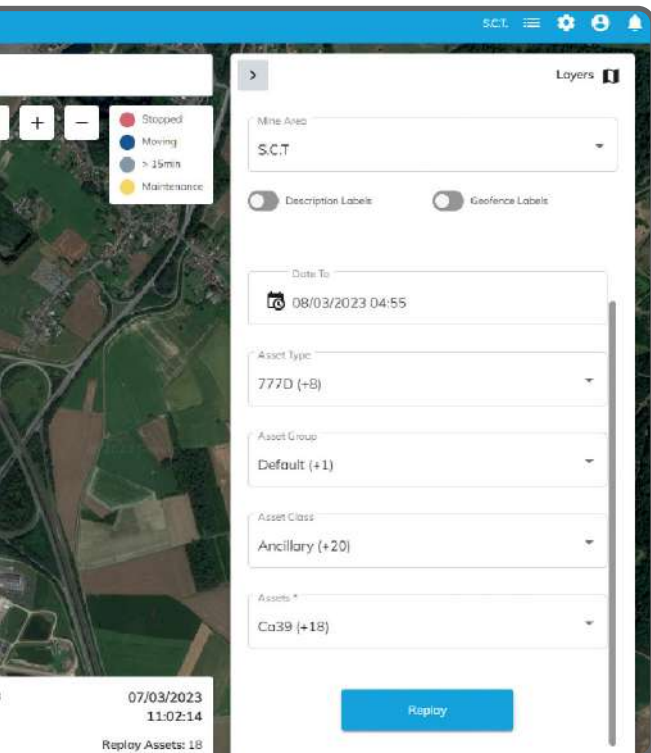


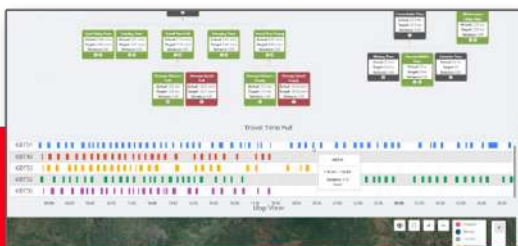
LIVE FLEET MANAGEMENT SOLUTION FOR MINING AND CONSTRUCTION SITES

Our data-driven management tool allows you to follow mining activities in real-time, ensuring optimum efficiency and control over your operations.

Unique benefits

- | | |
|---|---|
| ✓ | Decrease the cost per cycle |
| ✓ | Increase your loading accuracy |
| ✓ | Increase your machine uptime |
| ✓ | Reduce fuel consumption |
| ✓ | Avoid jobsite accidents |
| ✓ | Decrease your jobsite's CO ₂ emissions |

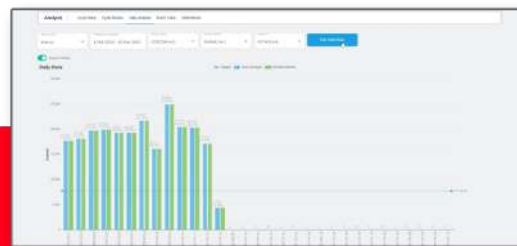




FLEET PRODUCTION INSIGHTS

Increase production efficiency across all connected job sites by monitoring opportunities for improvement.

- ✓ Live production data overview
- ✓ Fleet production data dashboard
- ✓ Live location and visual machine tracking
- ✓ Event replay abilities



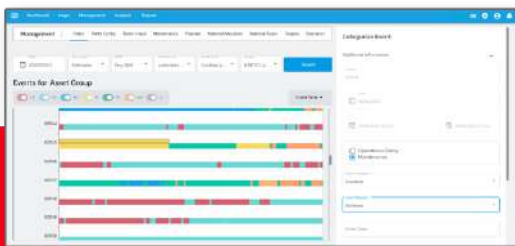
MACHINE USAGE INSIGHTS

Maintain optimal asset health conditions, productivity, safety, and residual value through continuous monitoring.

- ✓ Cycle efficiency measurements
- ✓ Live speed and idle time measurements
- ✓ Live machine monitoring
- ✓ Machine performance and misuse reports
- ✓ Machine performance benchmarks
- ✓ Operator performance overviews

COMPATIBLE WITH





DELAY MANAGEMENT

By effectively managing delays, organizations can transform non-productive times into valuable operational or maintenance events.



SMARTFLEET^{DX} SUPPORT

Get remote and onsite support from SmartFleet^{DX} representatives to solve all your challenges and issues as quickly as possible.

- ✓ Machine-use consultation and advice from industry experts
- ✓ Market benchmarks on important KPIs
- ✓ Maintenance reports with actionable insights



AND MORE



DECISION INSIGHTS AT YOUR FINGERTIPS

Make data-driven decisions to optimise efficiency, maintenance, and productivity with our business intelligence platform designed specifically for your industry.



Unique benefits

- ✓ Decrease the cost per ton hauled.
- ✓ Increase your machine uptime.
- ✓ Decrease your machine fuel consumption and CO² emissions.
- ✓ Increase output and production.
- ✓ Increase your profitability.
- ✓ Improve cycle and payload management.
- ✓ Decrease your machine TCO.



FLEET PRODUCTION INSIGHTS

Boost production efficiency across all connected job sites by monitoring opportunities for improvement.

- ✓ Overall fleet production data dashboard
- ✓ Machine-level performance overview
- ✓ Machine performance benchmarks
- ✓ Production performance reports
- ✓ Cycle efficiency measurements



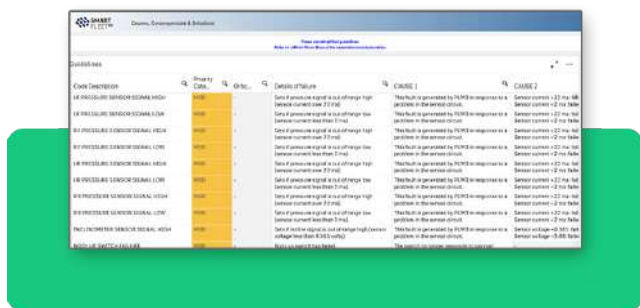
MACHINE USAGE INSIGHTS

Maintain optimal asset health conditions, productivity, safety, and residual value through continuous remote monitoring.

- ✓ Fuel consumption and cycle efficiency measurements
- ✓ Get speed measurements
- ✓ Access to idle time measurements
- ✓ Remote machine health monitoring
- ✓ Misuse reports

COMPATIBLE WITH





PREDICTIVE MAINTENANCE

Go from reactive to predictive maintenance of all equipment brands, including recommendations for parts that need to be replaced.

- ✓ Alerts
- ✓ Predictive warnings on safety and damage risks
- ✓ Planned maintenance and parts replacement to increase machine uptime and equipment lifetime
- ✓ Key information available on smartphones

SMARTFLEET^{DX} SUPPORT

Get remote and onsite support from SmartFleet^{DX} representatives to solve all your challenges and issues as quickly as possible.

- ✓ Machine-use consultation and advice from industry experts
- ✓ Market benchmarks on important KPIs
- ✓ Maintenance reports with actionable insights



BELL

BOMAG
FAYAT GROUP

VOLVO

DOOSAN

CASE
CONSTRUCTION

AND MORE

PRODUCTION OPTIMISATION AT SCALE. MADE SIMPLE.

Our suite of digital solutions aimed at improving processes and efficiency in mining and quarrying production, and vehicle maintenance.

Unique benefits

- ✓ Fleet management simplicity
- ✓ Real-time access to vehicle data
- ✓ Maximised production and operator utilisation
- ✓ Significant TCO Reduction
- ✓ Significant time savings
- ✓ Increased output quality at reduced in-out costs





PRODUCTION

iVolve Mine4D Production enables real-time decision-making in two ways: By providing real-time, in-cab operator feedback as well as by monitoring and recording the truckload cycle.

This way it offers a real-time snapshot across the entire production fleet with user-friendly graphic visualisation tools that aid to dispatch personnel and to enable shift managers to make timely decisions.

- ✓ Optimise truck loading
- ✓ Optimise circuit operation
- ✓ Improve labour efficiencies
- ✓ Communicate directly with operators directly
- ✓ Save time on data collection
- ✓ Improve data collection accuracy
- ✓ Early intervention to correct mistakes
- ✓ Optimise vehicle utilisation
- ✓ Easily locate vehicles and operators

MAINTENANCE AND TYRES

iVolve Mine4D Maintenance provides real-time equipment health data feeds. This data is displayed graphically via iReport dashboards at fleet and individual asset levels, with full data history available for informal and scheduled reporting.

iVolve Mine4D Tyre™ provides mine site management, safety and maintenance teams with real-time access to tyre temperatures and pressures. Respond to over-temperature and under/over-pressure events before the tyre reaches critical status.

- ✓ Identify early vehicle issues
- ✓ Monitor and manage machine abuse
- ✓ Monitor and manage overloads
- ✓ Extend component life
- ✓ Increase the availability of equipment
- ✓ Minimise unscheduled downtimes
- ✓ Identify equipment problems before failures occur

COMPATIBLE WITH





GUIDANCE

iVolve Mine4D Guidance is an innovative approach to the use of technology in mining and quarrying. Specifically designed to optimise operator activities, Guidance seamlessly integrates machine guidance and fleet management tasks.

By combining real-time operational data with advanced machine guidance and control precision, Guidance offers numerous benefits to mining and quarrying operations.

- ✓ Compliance with design surface
- ✓ Improve payload distribution
- ✓ Improved dig location accuracy
- ✓ Increase truck productivity
- ✓ Improved material management
- ✓ Move material once, reduce rework and rehandle
- ✓ Better road design execution allows for maintained speeds
- ✓ Reduce wear and tear of equipment
- ✓ Operate vehicles safely with precise vehicle location

PROXIMITI™

Proximiti™ integrates a long-range, high-speed GPS based collision awareness system with a short-range, low-speed radar proximity detection system to provide enhanced situational awareness for operators of heavy, medium, and light vehicles on mine sites.

- ✓ Operators work efficiently and confidently having knowledge of their surroundings
- ✓ Easily report on incident investigation
- ✓ Easily investigate incidents
- ✓ Presence of small vehicles and personnel within the working proximity of large machines
- ✓ Alerts for keep out zones and speed limits



AND MORE



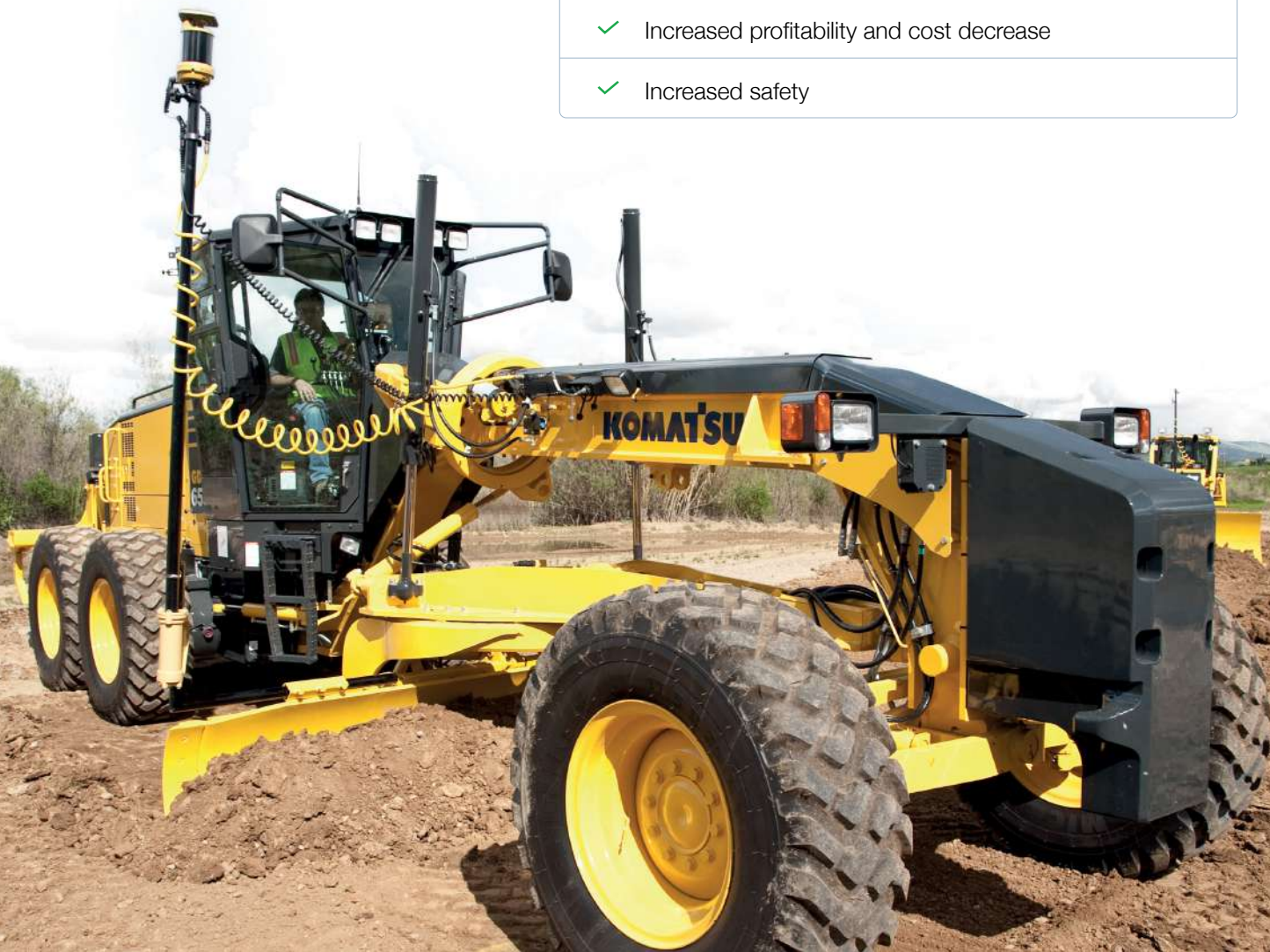


OPTIMAL AND ACCURATE RESULTS. FASTER, SAFER.

Our complete solution for precise positioning in guidance, weighing and surveying, equipped with innovative measurement systems, software, and mobile solutions, makes your projects more profitable, productive, and smart.

Unique benefits

- | | |
|---|---|
| ✓ | Increased production accuracy |
| ✓ | Increased productivity |
| ✓ | Increased profitability and cost decrease |
| ✓ | Increased safety |





3D GUIDANCE SYSTEMS

Tasks are performed precisely and efficiently, right from the first attempt.

- ✓ **Dozers:** system with or without masts
- ✓ **Graders:** UNIQUE millimeter GPS system
- ✓ **Pavers:** UNIQUE "SmoothRide" system
- ✓ **Milling Machines:** UNIQUE "SmoothRide" system
- ✓ **Excavators & Compactors:** Retrofit system or canbus connection

WEIGHING SYSTEMS

On-board weighing system designed for wheeled loaders and excavators. For tons-per-hour performance, greater efficiency, reduced fuel usage, machine and tyre wear.

- ✓ RDS Payload – Loadmaster Alpha 100 for wheeled loaders
- ✓ RDS Loadex 100 for excavators

COMPATIBLE WITH





GEOLOCALISATION SYSTEMS

Topcon's innovative optical and GNSS technology is focused on productivity.

- ✓ GNSS receiver: Hiper VR
- ✓ Field notebook: FC-6000
- ✓ Robotic Total station: GT-1200
- ✓ Manual Total station: OS-200 & GM-50
- ✓ Lasers: RL-H5A & RL-HV2S
- ✓ Auto levels : AT-B2, AT-B3 et AT-B4
- ✓ Digital Levels : DL-500

SOFTWARE

The productivity gains through the digitalisation and automation of construction sites.

- ✓ Sitelink3D™ v2
- ✓ 3D Office
- ✓ MAGNET® Collage
- ✓ MAGNET® Field
- ✓ MAGNET® Enterprise



AND MORE

THE SMARTFLEET^{DX} OFFER TO MANAGE ALL BRANDS



Fleet administration & management		
Data reporting & Business Intelligence		
Production monitoring & optimisation		
Asset health & maintenance		
Environment, Health, Safety & Security measurement/triggers		
Real-time fleet management system (FMS) & production monitoring		
Remote monitoring		
Machine Guidance & Weighing		







SMART
FLEET^{DX}

YOUR FLEET,
MADE SMART.



WHY TRUST US? OUR PROMISES.

120 YEARS OF INDUSTRY EXPERIENCE

SmartFleet^{DX} services are built on years of industry experience. With a rich history in mining, quarry and construction, as well as a long-standing presence in Europe and Africa, our expert team of mining, quarry and construction specialists have worked with a wide range of clients. They are providing exceptional service and support backed by extensive industry know-how. You can always rely on us to get the job done.

LOCAL SUPPORT, GLOBAL REACH

Local knowledge and onsite assistance constitute the cornerstones of our operation. But, we don't stop there; our well-structured organisation also provides the convenience of seamless remote support when required.

VALUE, QUALITY AND USER-FRIENDLY SOLUTIONS

Our solutions offer exceptional value for money, facilitating your digital transformation journey without straining your resources.

SINGLE POINT OF CONTACT

Emphasising convenience and clear communication, we offer a single touchpoint for all our services. This unified approach simplifies processes and ensures effective, consistent communication.

DEDICATED TO YOUR SUCCESS

Our team of accomplished field technicians and remote data analysts is committed to your success. At each stage, we work hand in hand with you, ensuring prompt resolution of issues - be it onsite or remotely.

MULTIBRANDS SUPPORT: UNLIMITED COMPATIBILITY & CONNECTIVITY



KOMATSU

LIEBHERR

HITACHI

 **TEREX**

 **WIRTGEN**

BELL

 **BOMAG**
FAYAT GROUP

VOLVO

DOOSAN

CASE
CONSTRUCTION

AND MORE



LET'S EXPLORE NEW OPPORTUNITIES TOGETHER.

BELGIUM

Rameistraat, 123
3090 Overijse
Belgium

Tel: +32 (0)2 / 689 28 11

BENIN

Rue 400
Quartier Saint Jean
Cotonou, Benin

Tel. +229 94 23 02 76

BURKINA FASO

Sis à Koubri – Axe National n°5
8,5 km de l'échangeur
Ouagadougou, Burkina Faso

Tel: +243 84 84 43 000

CAMEROON

BP 1935, Z.I. de Bassa, Ex
base Sumoca, Rue du Com-
plexe CCC
Douala, Cameroun

Tel. +237 657 70 00 01

DR CONGO

Avenue Hewa Bora 17,
Quartier Industriel,
Lubumbashi, DR Congo

Tel. +243 84 84 43 000

GUINEA

BP 732 – Nongo
Commune de Ratoma
Conakry, Guinea

Tel. +224 621 35 66 35

IVORY COAST

Rue Louis Lumière
Zone 4
Abidjan, Ivory Coast

Tel. +225 21 35 85 41

MALI

Route De Sotuba, Zone
Industrielle rue 845
Bamako, Mali

Tel. + 223 20 22 21 43

MAURITANIA

Ilôt B 151 Nord
Tevragh Zeina
Nouakchott, Mauritania

Tel. +222 45 25 23 94

MAURITIUS

Level 4, NeXTeracom
Tower 1 MU, 72201,
Ebène, Mauritius

Tel. +230 40 26 700

NETHERLANDS

Laan van de Stier 80
7324 CV
Apeldoorn, Netherlands

Tel. +31 88 303 2200

SENEGAL

Km 18.5 Route de
Rufisque, Zone industrielle
de Mbao
Dakar, Senegal

Tel. +221 33 87 90 030

TOGO

203 BD du 13
Janvier
Lomé, Togo

Tel. +228 22 61 07 75

ZAMBIA

Natwange Road,
Parklands,
Kitwe, Zambia

Tel. +260 968 49 32 49

