



BESPOKE MURANO GLASS LIGHTING **PROJECT TECHNICAL GUIDE 2026**

Technical specifications, workflow and compliance overview
for architects and interior designers.



www.pro.bottega-veneziana.com

About Us

Bottega Veneziana is a Venetian glass furnace specialized in bespoke Murano glass lighting for high-end residential and hospitality projects.

All pieces are handcrafted in Venice using traditional glassmaking techniques and developed in close collaboration with architects and interior designers worldwide.

Our installations are engineered to meet the technical and electrical standards required for US and EU projects, combining artisanal craftsmanship with structured project management.



Our Bespoke Process

1. Concept Review

We analyze drawings, references and spatial requirements.

2. Technical Development

Dimensions, suspension systems and structural integration are defined.

3. 2D / 3D Drawings

Detailed technical drawings are provided for approval before production.

4. Sample Production

Upon request, glass samples or finish prototypes can be produced prior to full production to validate color accuracy, scale proportions and material quality.

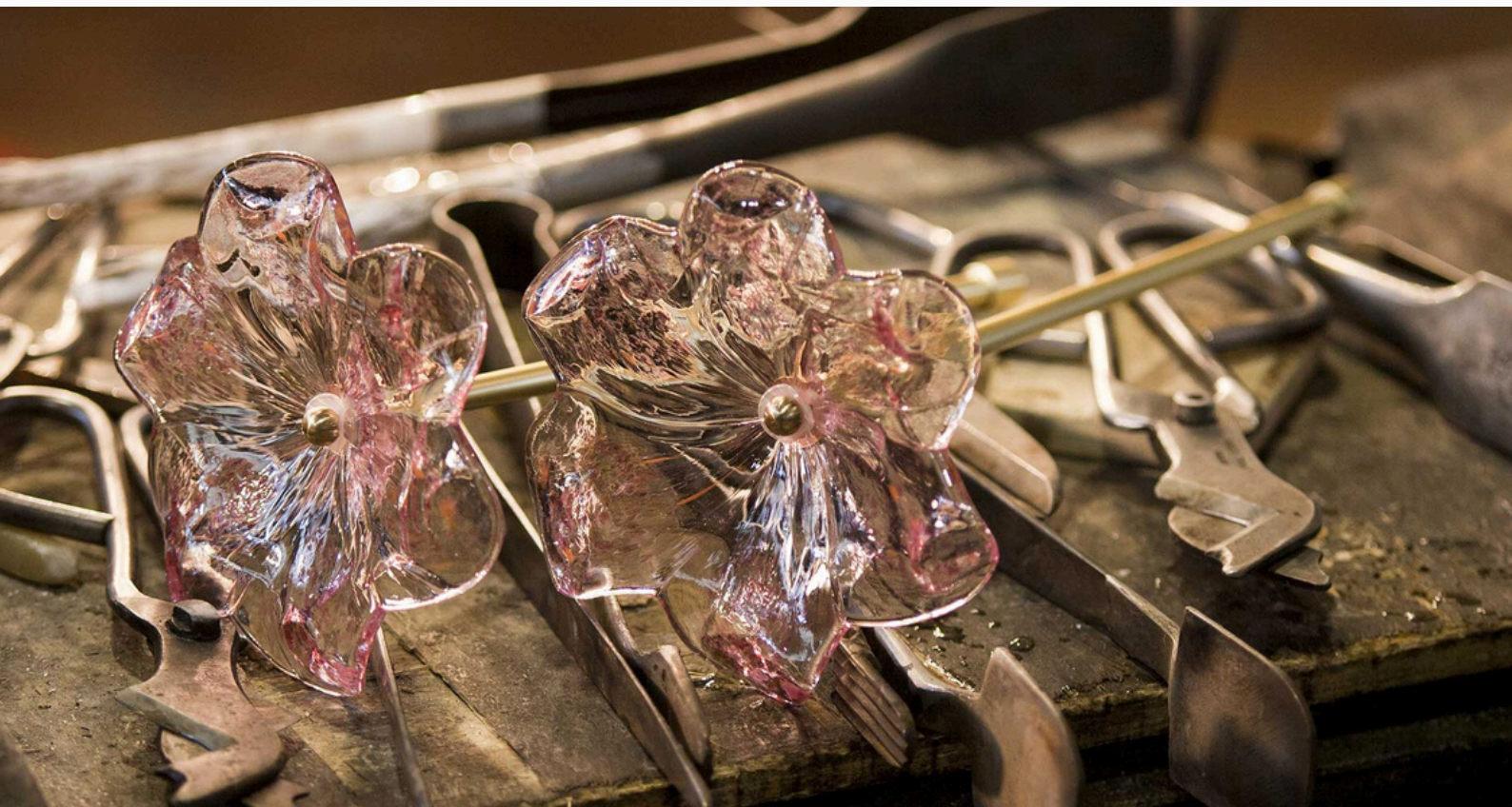
This step is particularly recommended for hospitality and large-scale custom installations.

5. Handmade Production

All glass elements are handcrafted in Murano.

6. Shipping & Installation Support

International coordination with installation guidance when required.



Electrical & Installation

1. UL-ready wiring available upon request
2. E12, E14 and E26 compatibility
3. Dimmable LED systems
4. Custom canopy and ceiling plate solutions
5. Coordination with US junction box standards
6. Multi-point suspension systems for large installations
7. Technical Documentation Package available upon request, including detailed drawings and installation guidelines.



Engineering & Structural Solutions

1. Fully customizable dimensions
2. Modular large-scale compositions
3. Linear installations up to 4 meters and beyond
4. Double-height staircase installations
5. Ceiling integration strategies
6. Weight-optimized configurations
7. Direct collaboration with design teams, contractors and on-site electricians when required.



Zoey Deschanel & Jonathan Scott Residence

Manhattan, NY

High-End Residential Installation

- **Project Type:** Private residence
- **Configuration:** Multi-tier custom chandelier
- **Electrical:** Adapted to US standards
- **Lead Time:** 6 weeks

Bespoke Murano glass installation developed as a central architectural lighting element within a Manhattan luxury residence.

Luxury Hospitality Installation

Miami, Florida — USA

Murano glass lighting installation developed for a luxury hospitality environment in Miami.

- **Project Type:** High-end hospitality venue
- **Configuration:** Custom modular chandelier installation
- **Scale:** Extended linear development
- **Integration:** Structural ceiling coordination
- **Electrical:** Adapted to US standards
- **Lead Time:** 6 weeks

The custom composition was engineered to integrate with the architectural layout and structural ceiling requirements, maintaining dimensional precision and balanced weight distribution while preserving handcrafted quality.

Ristorante “La Bellezza”

Birmingham, UK

Hospitality Installation

- **Project Type:** International hospitality venue
- **Configuration:** Custom chandelier installation
- **Integration:** Ceiling-adapted suspension system
- **Optimization:** Balanced weight distribution
- **Lead Time:** 8 weeks

Murano glass lighting installation developed for a high-traffic hospitality environment, combining sculptural presence with structural stability.



Production Workflow

1. Design & Technical Approval

Final drawings and specifications are approved prior to production.

2. Sample & Prototype Validation (If Required)

Upon request, glass samples or finish prototypes can be produced before full production to validate color accuracy, scale proportions and material quality.

This step is recommended for hospitality or large-scale custom installations.

3. Order Confirmation

Production is initiated upon deposit confirmation.

4. Handmade Production

Standard production time: 6 weeks.

Timelines may vary depending on project scale, customization level, or specific scheduling requirements.

Priority scheduling may be available upon request.

5. Final Balance & Shipping Coordination

Remaining balance prior to shipment.

International logistics support available (EXW or DDP upon request).

6. Project Coordination

Direct collaboration with design teams, contractors and on-site electricians when required.



Trade Program for Design Professionals

Structured pricing and priority production scheduling for long-term professional collaborations.

EXCLUSIVE TRADE DISCOUNTS

Preferential pricing based on project value and volume.

CUSTOM PRODUCTION

Fully bespoke dimensions, finishes and configurations.

TECHNICAL SUPPORT

2D drawings, technical sheets and installation guidance.

SAMPLE DEVELOPMENT

Material or glass samples can be produced upon request before full production.

FLEXIBLE LEAD TIME

Standard lead time: 6 weeks, flexible based on project requirements.

Start Your Project

Submit your drawings or project brief for a preliminary technical assessment.

Our team will respond within 48 hours.

General Office

info@bottega-veneziana.com

Technical Office

franco.sponchiado@bottega-veneziana.com

Sales Office

clienti@bottega-veneziana.com

Office

MAGLASS srl
Via Venier, 1 30020 Marcon
Murano Glass Lighting
Venice, Italy

Contact

Phone: +393289780731
www.pro.bottega-veneziana.com
Social Media: [@bottegaveneziana_official](https://www.instagram.com/bottegaveneziana_official)

