

Print NW

Artwork Submission Specifications for Digital Printing

File Format • Adobe Acrobat PDF (Version 1.6 or later) • InDesign Packaged File (include links and fonts)

Layout Scale • Full Scale Preferred • Single Pages Document (16 page Book will have 16 pages)

Art with Bleed • Final size + .125 inch perimeter bleed

Color Specs

- CMYK
- Pantone (PMS) as Process spot colors of the material its on
- Please convert all spot color that are not printing in PMS to CMYK
- Recommended: solid black as 4-Color rich blacks (C: 60, M: 40, Y:40, K:100)

Type

- All Fonts included as resource files • Or else, Convert to outlines or paths
- Black Type as 100% K (Black) value

Images • All images as CMYK

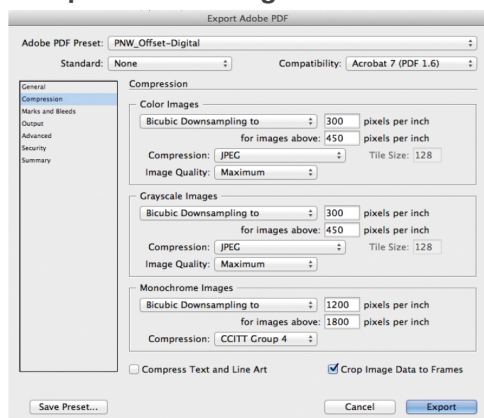
Print Resolution • 300 ppi (High Quality prints) • 150 ppi (Standard output)

Output Profiles • Compression settings: Color Bitmap Images = to 300 for images above 450
Grayscale Bitmap Images = to 300 for images above 450
Monochrome Bitmap Images = to 1200 for images above 1800

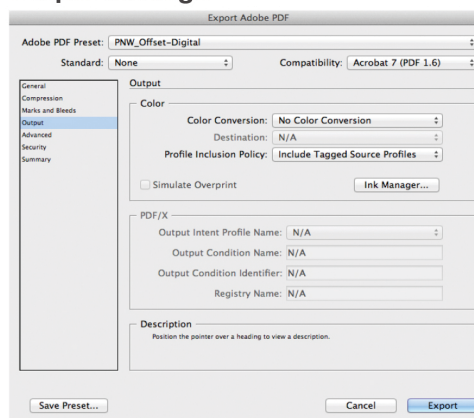
• OUTPUT settings: Color Conversion = No Conversion
Profile Inclusion Policy = Include Tagged Source Profiles

Acrobat Distiller Settings - Whenever possible, download our Print NW settings from:
https://assets.printnw.net/PrintNW_Acrobat_Settings.zip, otherwise use the settings shown below

Compression Settings



Output Settings



Acrobat Settings

Please review PDF before Submission

MAC:

- When Acrobat is open
- Go to drop down>Preferences>General
- Select Page Display Tab
- Make sure Use Overprint Preview = Always
- Make sure Default Transparency Blending = Working CMYK

PC:

- When Acrobat is open
- Go to Edit > Preferences
- Select Page Display Tab
- Make sure Use Overprint Preview = Always
- Make sure Default Transparency Blending = Working CMYK

Artwork Submissions:

Electronic Delivery

• FTP / Website - Please go to <https://www.printnw.net/upload-a-file> and select your Sales Representative

Digital Media - Please supply files on one of the following physical formats:

• CD • Flash / Thumb Drive • Removable Hard Drive

If you have any further questions, your Account Manager will be happy to assist!