

END OF YEAR REPORT

2024 | 2025



Colorado
Homeschool
Enrichment





Table of Contents

- 01 Letter from CEO
- 02 Who, What, How
- 03 Programs + Score Card
- 04 Growth
- 05 Leadership
- 06 Looking Ahead



Growth with Purpose

LETTER FROM CEO



This year has been one of extraordinary growth both in numbers and in mission. What started as a bold idea to serve homeschooling families has multiplied faster than we anticipated: from 41 branch and micro-campuses to 77, from 1,400 students to over 2,700 spots requested for the coming year. It's been a whirlwind, but we've stayed committed to who we are and why we do this.

At the center of this growth is our staff and contractors. From regional directors to campus leaders, from finance to front of house, these are the people who made it work. They've

shown grit, grace, and a willingness to lead through complexity. They've built systems, launched campuses, solved problems, and stayed relentlessly mission focused. Being part of CHE, and leading a team of this caliber, has been both a gift and a privilege.

I'm proud not just of the numbers, but of the culture we're building. A culture of clarity, accountability, and encouragement. A place where excellence and humility are expected in equal measure. Our growth has been intentional, and as we plan for the future, I'm confident we're building on a strong foundation.

Renee Miller
CEO



CHE IS A NEW BREED OF HOMESCHOOL ENRICHMENT

Education Empowered by **CHE**

Who is CHE?

CHE is a tuition-free Homeschool Enrichment Program.

What does CHE do?

CHE invests in your child's potential through enriching educational experiences.

How do families benefit?

CHE connects families to supportive communities, publicly-funded enrichment programs, and exciting educational opportunities.

Portfolio of Programs

2024–2025 Score Card



CHE’s diverse programs—from music and sports to tutoring, ski lessons, and adventure learning—reflect our commitment to holistic, lifelong education. Rooted in truth, beauty, and goodness, these initiatives fostered growth and strengthened community across the student journey.

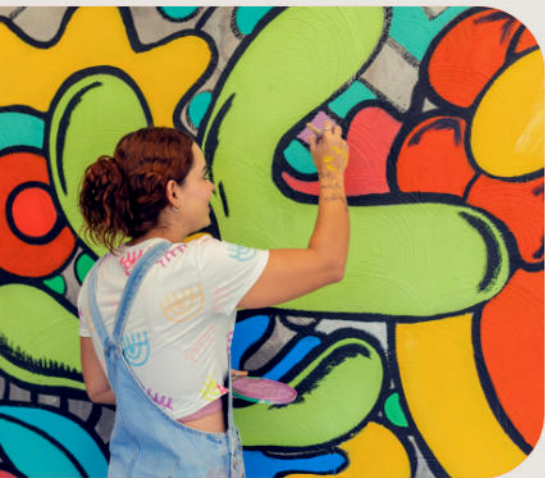
Adventure

516 unique students participated in Adventure classes during the 2024–25 school year. These offerings included wilderness first aid, canyoneering, rock climbing, nature studies, hiking, and camping. Designed to challenge physical limits and build resilience, these experiences deepened students’ connection to the natural world while cultivating confidence, teamwork, and practical survival skills.



STEAM

567 unique students engaged in STEM programming, exploring subjects such as coding, science experiments, geology, and biology. Through hands-on activities and real-world applications, students developed critical thinking and problem-solving skills while gaining a deeper appreciation for the role of science and technology in everyday life.



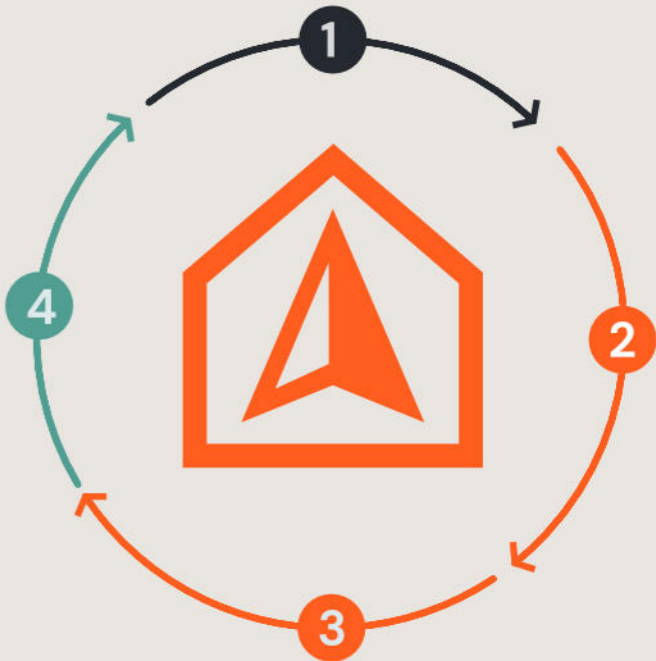
Art

953 unique students took part in Arts classes throughout the year, making it our most popular enrichment track. Offerings included music, dance, drawing, and painting, providing students with meaningful outlets for creativity and self-expression. These experiences not only nurtured artistic talent but also supported emotional well-being and personal growth through the transformative power of the arts.

98.3% Average

This scorecard presents a snapshot of each program’s performance at the close of the 2024–25 academic year. Data was collected from all departments within the ER BOCES to provide a well-rounded, accurate reflection of program status and outcomes.

This quarterly scorecard highlights key indicators of program success and growth, serving as a tool for continued improvement, transparency, and celebration of impact.



Quarter	Teacher of Record	Attendance	Engagement	Compliance	Financials	Parent Satisfaction	Total	%
1	5	5	5	5	3	5	28	93.3%
2	5	5	5	5	5	-	25	100%
3	5	5	5	5	5	5	30	100%
4	5	5	5	5	-	-	20	100%

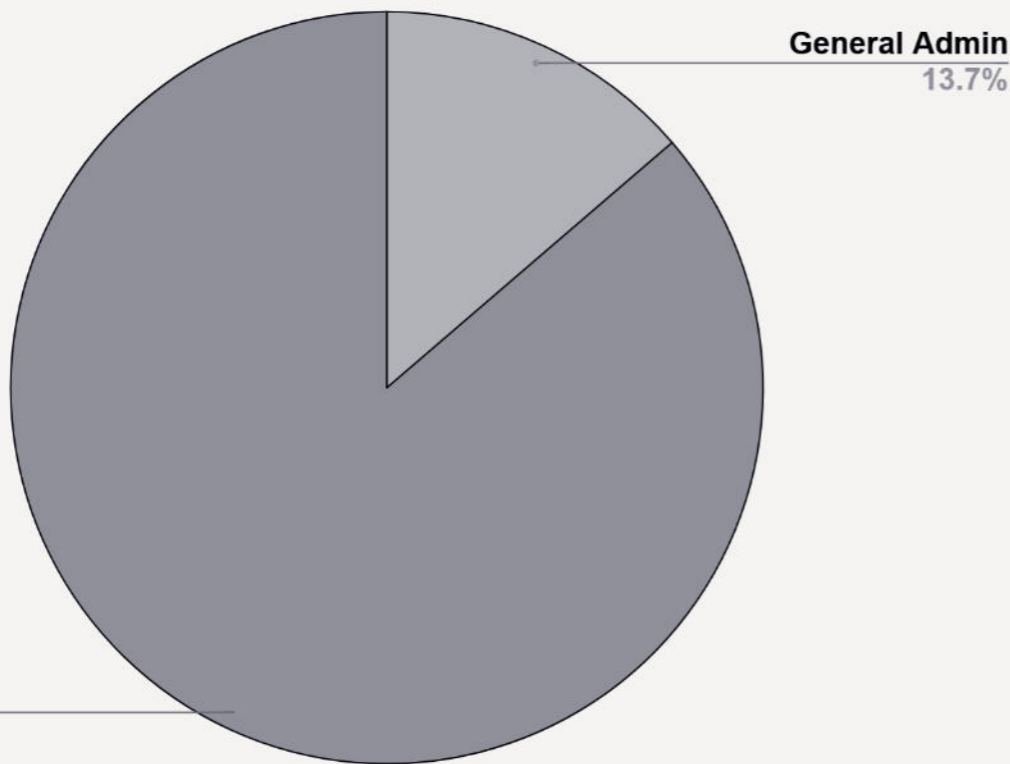
All values shown are on a 1–5 scale, where 1 indicates the lowest rating and 5 the highest.

Measuring Growth



Financial

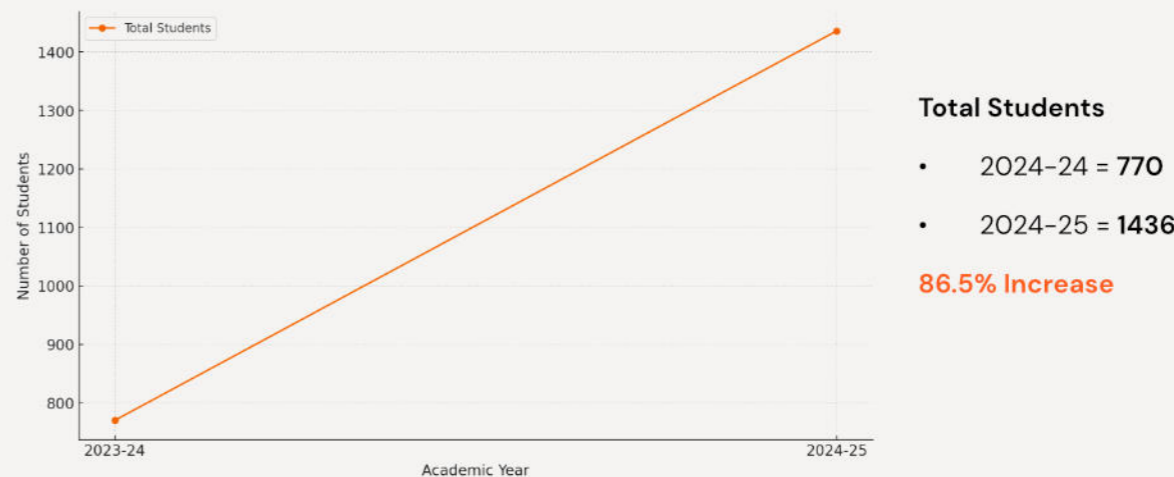
Program & Admin Funding



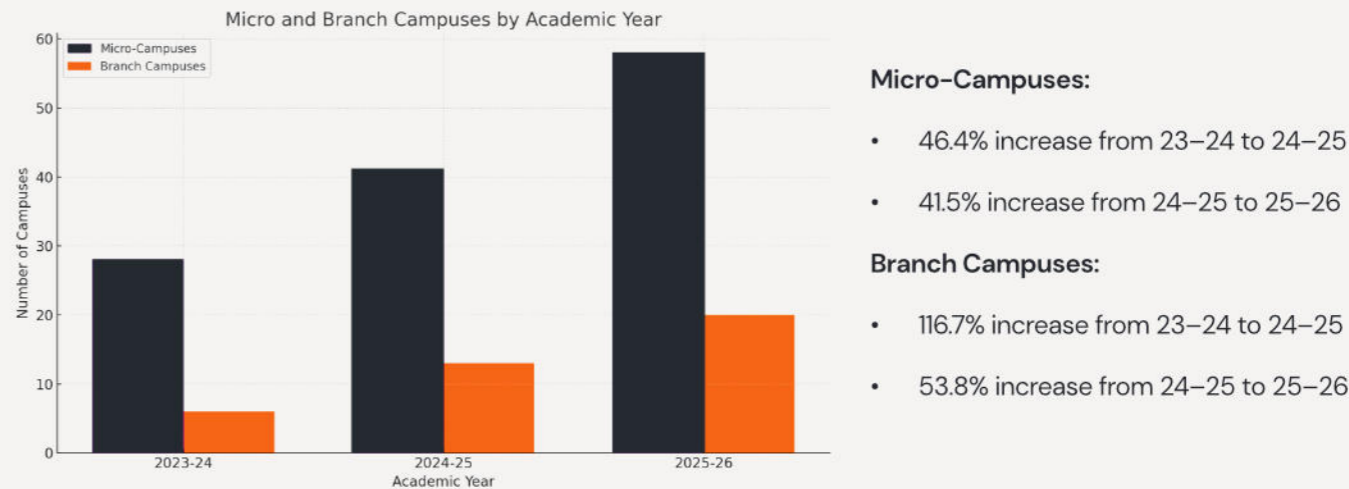
For the fiscal year that concluded in June 2025, Colorado Homeschool Enrichment (CHE) allocated approximately 86% of expenses to programming, continuing our focus on supporting students and families across the state. All other spending, including general administration, represented about 13.7%, reflecting our ongoing investment in staffing and infrastructure. These preliminary figures reinforce our commitment to prioritizing educational impact while maintaining the operational support necessary to serve a growing homeschool community.

Enrollment

Total Enrollment



Campus Growth



CHE Leadership



Renee Miller

CHIEF EXECUTIVE OFFICER



Jeff Cooper

CHIEF OPERATIONS OFFICER



Joshua Gallardo

DIRECTOR OF STRATEGIC DEVELOPMENT



Mike Carter

CAMPUS DIRECTOR



Dawn Lamping

RESEARCH AND DEVELOPMENT

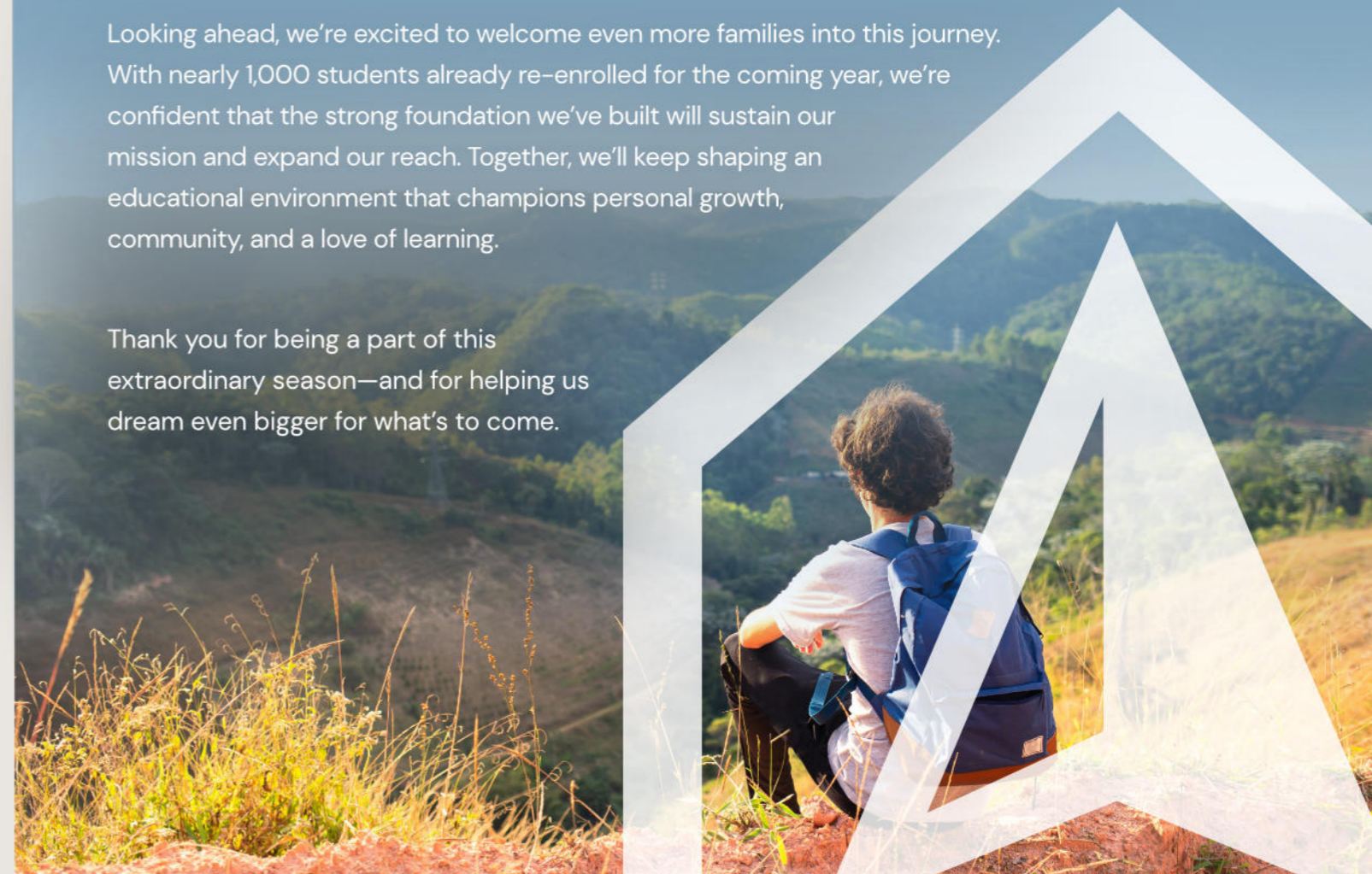
Looking Ahead

As we reflect on the 24-25 school year, we are both humbled and energized by what this community has accomplished together. In just one year, CHE has nearly doubled in size—growing from 770 to over 1,400 students, expanding from 34 to 54 campuses, and laying the groundwork to serve nearly 2,800 students across 78 campuses next year. This remarkable growth tells a story not just of numbers, but of trust, dedication, and shared vision.

At the heart of this momentum is our incredible team. From regional directors to campus leaders, finance to front-of-house, each person has contributed their expertise and passion to build something lasting. They've embraced complexity, innovative systems, and nurtured a culture of clarity, accountability, encouragement, and excellence. Because of their commitment, CHE continues to be a place where families are supported, students are challenged, and curiosity thrives.

Looking ahead, we're excited to welcome even more families into this journey. With nearly 1,000 students already re-enrolled for the coming year, we're confident that the strong foundation we've built will sustain our mission and expand our reach. Together, we'll keep shaping an educational environment that champions personal growth, community, and a love of learning.

Thank you for being a part of this extraordinary season—and for helping us dream even bigger for what's to come.





CHE empowers homeschool families by providing unique, tuition-free enrichment opportunities that enhance education, build community, and help children thrive.

che.school

