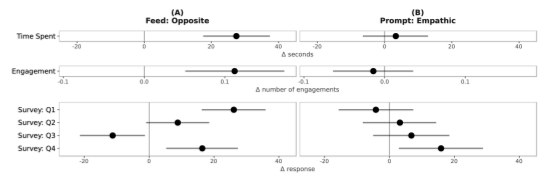
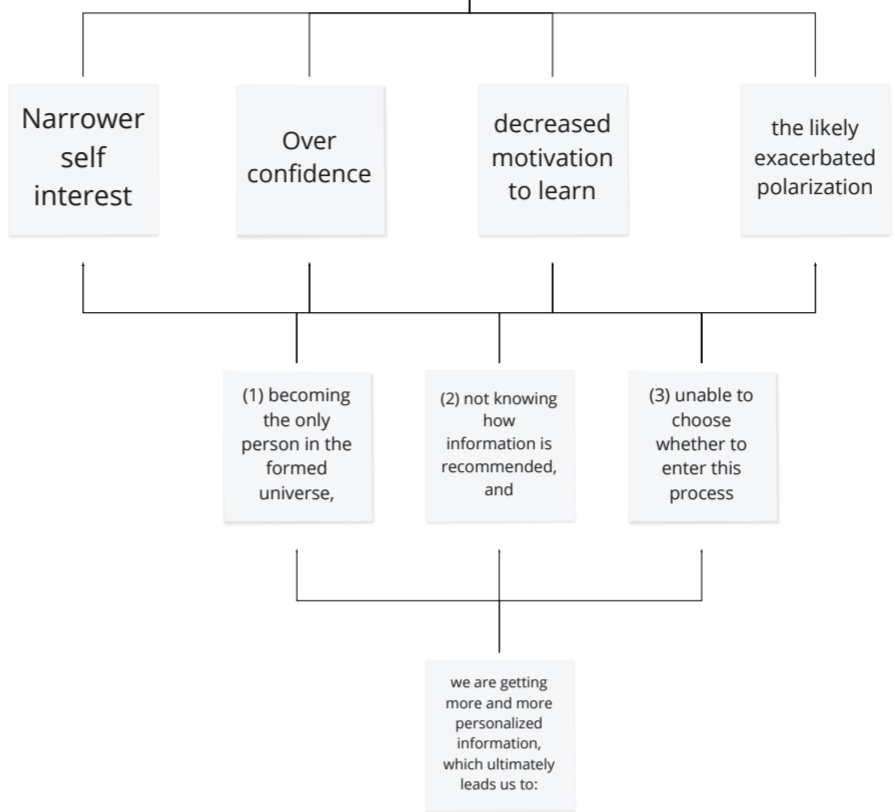


The analysis of the hashtags diffusion over the network allows us to understand that the reason for the echo chamber effect to become weaker in time is to be found in the increase of the interactions between users with opposite opinions.

People do not live into echo chambers; they instead go in and out as a response to external inputs.

some social media, such as Facebook or Twitter, are known to be more prone to yield the conditions for the emergence of echo chambers than others, such as Reddit.

how to diversify the recommendation results



Our experimental intervention is de-ployed through a Google Chrome extension that allows Twitter users to replace the content in their feeds with content from another real left or right leaning Twitter account's feed.

2 These destination feeds are approximate chronological reconstructions of a real Twitter user's feed in order to cultivate an experience of seeing Twitter from another user's point of view with the highest possible fidelity

After installing the extension, the user presses the "Flip my feed" button under their profile picture, which randomly selects one of 200 pre-curated "destination feeds" to replace their own.

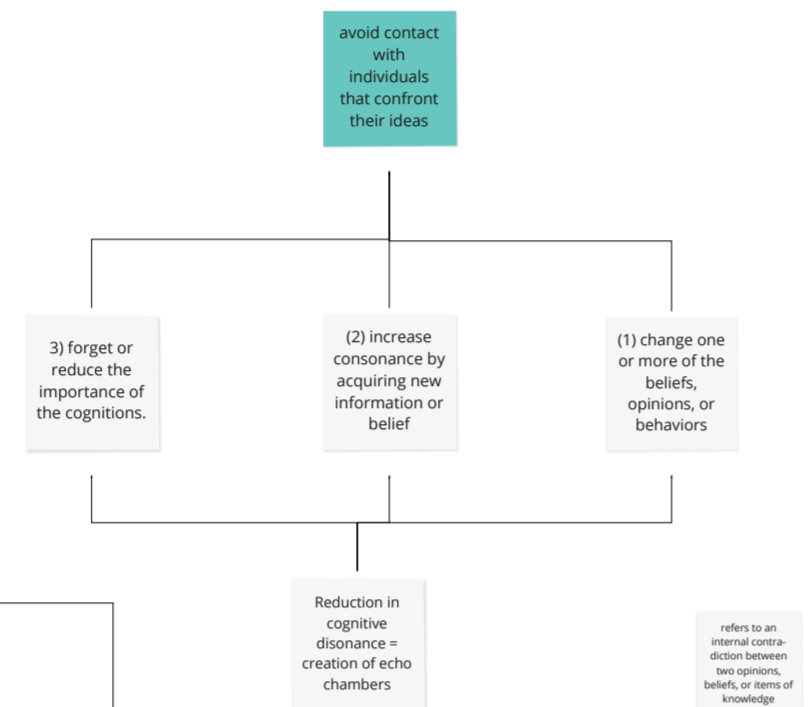
- Q1: "This feed is different from what I'm used to seeing"
- Q2: "I learned something new from browsing this person's feed"
- Q3: "I can understand why some people might identify with the views shown in this feed"
- Q4: "In the future, I would be interested in having a conversation with this feed's owner"

the complete dissolution of ties with those users with whom one disagrees should be discouraged, for example by providing alternative mechanism

Some social media platforms are experimenting with solutions like snooze buttons [1]—or the possibility to block only certain types of information, but not others.

Another approach is to alert users who are about to unfollow their only conduits to certain types or sources of information.

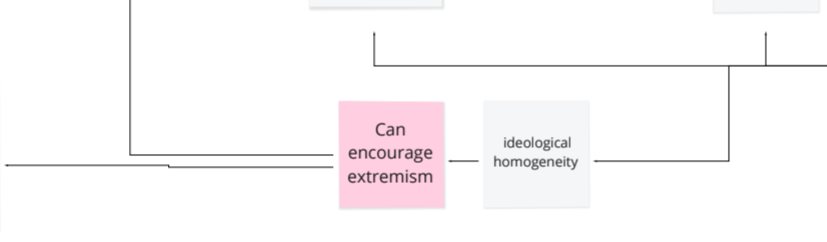
By exposing the sources of information reposted by our friends and recommending similar users, social media platforms encourage linking choices that maximize triadic closure.



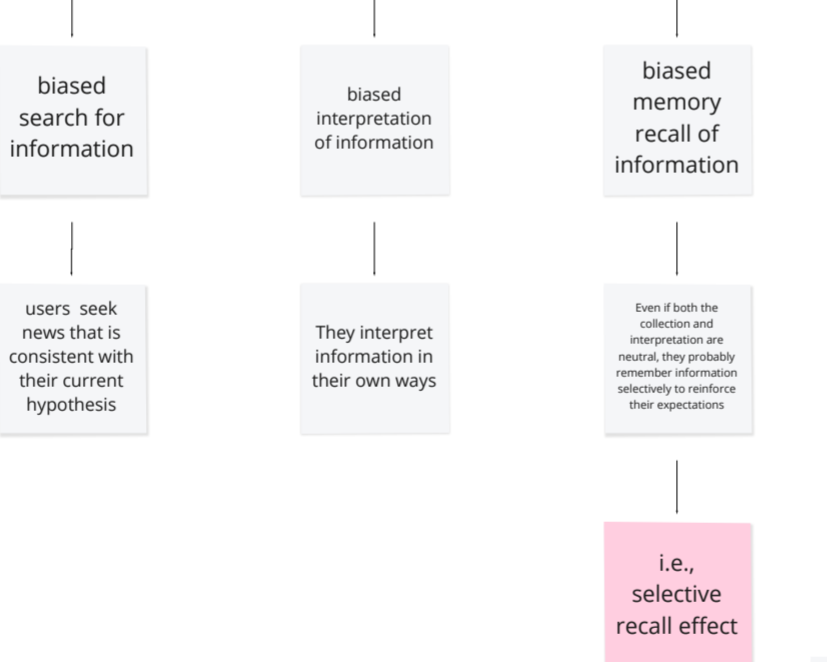
For example, the act of tweeting or posting contents on social media websites

(1) one's commitment to their thought will increase dramatically if it has been written down and disseminated to a public audience

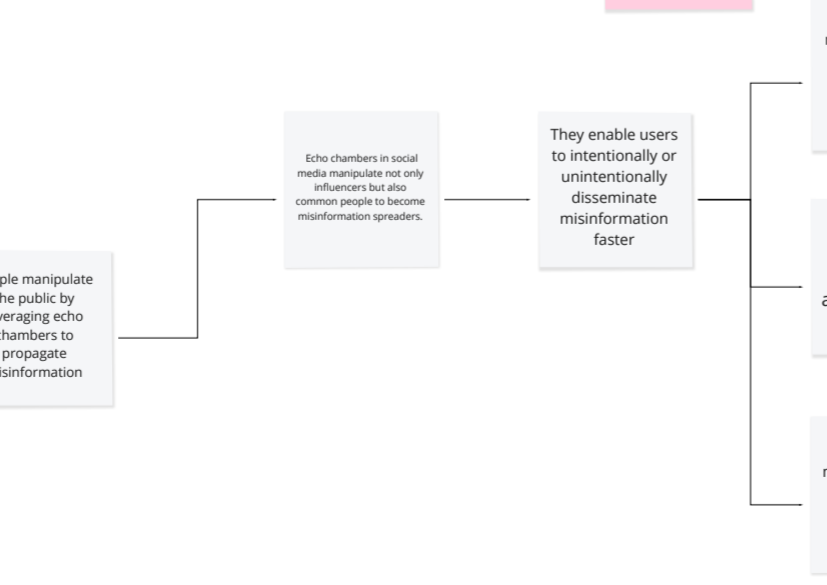
(2) discussion with like-minded individuals as well as the social support will reinforce the correctness of that belief



Feedback Loop



i.e., selective recall effect



- (1) similar misinformation is frequently scrolled and repeated to the users
- (2) the contents are inflammatory and emotional; and
- (3) meant to mislead people by exploiting social cognition and cognitive biases

Their analysis indicated that the higher involvement in the echo chamber enables more negative mental behaviors.

emotional contagion can occur without direct interaction between people, and in the complete absence of nonverbal cues.

EEmotional contagion

Attributes

Diffusion of misinformation

Conspiracy Theories

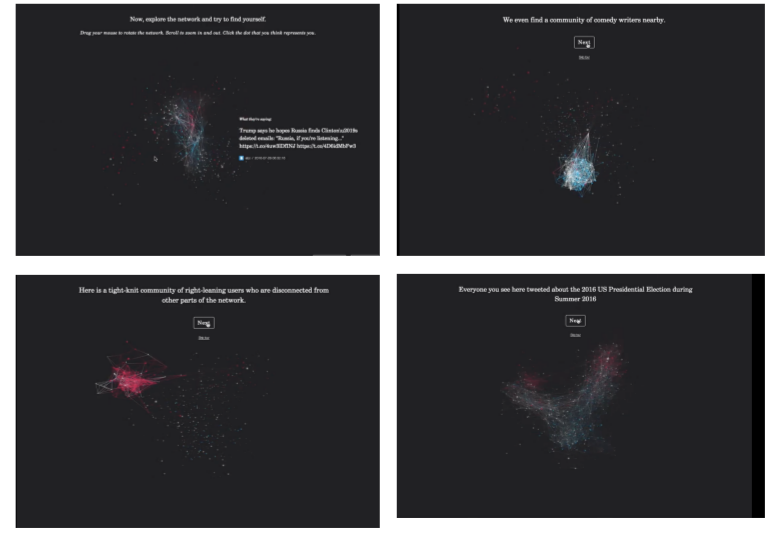
<https://www.media.mit.edu/projects/social-media-mirror/overview/>

We can help cultivate intellectual humility and motivate more diverse content-sharing and information-seeking behaviors

Our main hypothesis is that by presenting social media users with a bird's eye view of an ideologically fragmented social network and asking them to identify their positions within it

Depending on which experimental treatment the user is enrolled in, she may also see a list of suggested accounts to follow that would increase her diversity score.

Social Mirror is a web application that allows users to explore a sample of their politically-active Twitter connections.



These connections are visually-depicted in the form of a social network.