



RECOMA

WALL SYSTEMS

CE

+



RECOMA

+

240520955

+

Wall systems with Packwall

In this document, you will find different types of wall systems with Recoma Packwall as a component. You can see the performance of the different walls in terms of acoustics and fire rating, as well as their total and fossil CO₂e emissions.

As you will quickly notice, Recoma stands out from the crowd, especially when it comes to acoustics and carbon emissions. Here, our board contributes significantly improved sound insulation and a markedly substantial reduction in CO₂e emissions.

Not all wall systems have undergone all tests; therefore, some individual values are missing for certain configurations. If you have any questions regarding any wall system or its performance, you are warmly welcome to contact us.



NB 3062



Ackred. nr. 10445
Provning
ISO/IEC 17025



Table of Contents

p. 4

Steel stud + Rockwool

Steel stud + Mineral wool

p. 5

Woodstud + Hunton Nativo

Steel stud + Hunton Nativo

p. 6

Greenwall

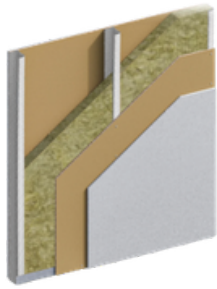
Wood stud + Rock wool

p. 7




70mm Steelstud with no insulation

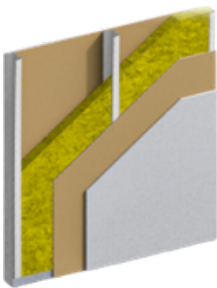
Wall systems with air cavity and gypsum board

95mm Steel stud with no insulation


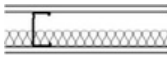
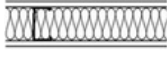

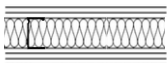


Steel stud + Rockwool

Construction	Acoustic rating**	Fire rating**	GWP Total CO2e kg/m2*	GWP Fossil CO2e kg/m2*
 <p>12,5mm RECOMA PackWall 70mm MR steel stud + Rockwool insulation 12,5mm RECOMA PackWall</p>	52 Rw (dB)		-13,7	5,2
 <p>12,5mm plasterboard 12,5mm RECOMA PackWall 70mm MR steel stud + Rockwool insulation 12,5mm RECOMA PackWall 12,5mm plasterboard</p>	58 Rw (dB)	EI 90	-10,5	9,6
 <p>12,5mm RECOMA PackWall 95mm MR steel stud + Rockwool insulation 12,5mm RECOMA PackWall</p>	56 Rw (dB)		-13,7	5,2
 <p>12,5mm plasterboard 12,5mm RECOMA PackWall 95mm MR steel stud + Rockwool insulation 12,5mm RECOMA PackWall 12,5mm plasterboard</p>	60 Rw (dB)	EI 90	-10,5	9,6

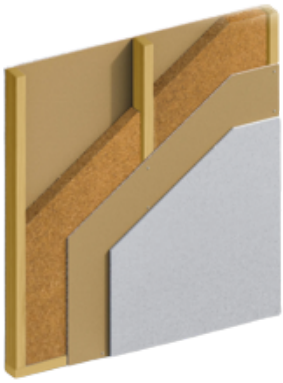


Steel stud + Mineral wool



Construction	Acoustic rating**	Fire rating**	GWP Total CO2e kg/m2*	GWP Fossil CO2e kg/m2*
 <p>12mm RECOMA PackWall 95mm C+ studs 12mm RECOMA PackWall</p>	44 Rw (dB)		-18,0	4,2
 <p>12mm RECOMA PackWall 95mm C+ studs with 45mm mineral wool 12 mm RECOMA PackWall</p>	52 Rw (dB)		-17,5	4,7
 <p>12mm RECOMA PackWall 95mm C+ studs with 95mm mineral wool 12mm RECOMA PackWall</p>	54 Rw (dB)		-17,1	5,2
 <p>13mm plasterboard 12mm RECOMA PackWall 95mm C+ studs with 95mm mineral wool 12mm RECOMA PackWall 13mm plasterboard</p>	59 Rw (dB)	EI 120	-13,9	9,6
 <p>13mm plasterboard 12mm RECOMA PackWall 70mm C+ studs with 70mm mineral wool 12mm RECOMA PackWall 13mm plasterboard</p>	58 Rw (dB)	EI 120	-14,0	9,4

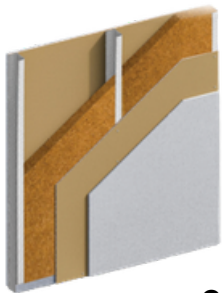
* Data from ProdiKt.com (A1-A3 GWP)

** Fire and acoustic results on 70 & 95mm frames are also valid on 120mm constructions









Wood stud + Hunton Nativo

Construction	Acoustic rating**	Fire rating**	GWP Total CO2e kg/m2*	GWP Fossil CO2e kg/m2*
 <p>12,5mm RECOMA PackWall 70mm wood stud + Hunton Nativo 12,5mm RECOMA PackWall</p>	48 Rw (dB)		-30,6	2,2
 <p>12,5mm plasterboard 12,5mm RECOMA PackWall 70mm wood stud + Hunton Nativo 12,5mm RECOMA PackWall 12,5mm plasterboard</p>	49 Rw (dB)	EI 60	-27,4	6,6
 <p>12,5mm RECOMA PackWall 95mm wood stud + Hunton Nativo 12,5mm RECOMA PackWall</p>	48 Rw (dB)		-30,6	2,2
 <p>12,5mm Plasterboard 12,5mm RECOMA PackWall 95mm wood stud + Hunton Nativo 12,5mm RECOMA PackWall 12,5mm Plasterboard</p>	51 Rw (dB)	EI 60	-27,4	6,6



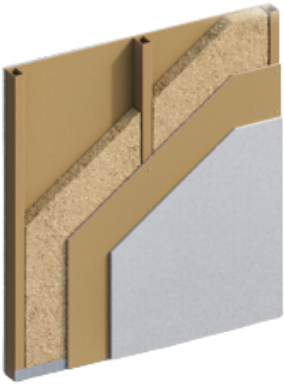
Steel stud + Hunton Nativo

Construction	Acoustic rating**	Fire rating**	GWP Total CO2e kg/m2*	GWP Fossil CO2e kg/m2*
 <p>12,5mm RECOMA PackWall 70mm metal stud + Hunton Nativo 12,5mm RECOMA PackWall</p>	51 Rw (dB)		-22,6	5,2
 <p>12,5mm plasterboard 12,5mm RECOMA PackWall 70mm metal stud + Hunton Nativo 12,5mm RECOMA PackWall 12,5mm plasterboard</p>	57 Rw (dB)	EI 60	-19,4	9,6
 <p>12,5mm RECOMA PackWall 95mm metal stud + Hunton Nativo 12,5mm RECOMA PackWall</p>	54 Rw (dB)		-22,6	5,2
 <p>12,5mm Plasterboard 12,5mm RECOMA PackWall 95mm metal stud + Hunton Nativo 12,5mm RECOMA PackWall 12,5mm Plasterboard</p>	57 Rw (dB)	EI 60	-19,4	9,6
 <p>12mm RECOMA PackWall 70mm Metal stud + 45mm Hunton Nativo 12mm RECOMA PackWall</p>	50 Rw (dB)		-22,6	5,2
 <p>12mm Plasterboard 12mm RECOMA PackWall 70mm metal stud + 45mm Hunton Nativo 12mm RECOMA PackWall 12mm Plasterboard</p>	57 Rw (dB)	EI 60	-19,4	9,6

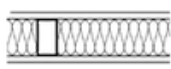
* Data from ProdiKt.com (A1-A3 GWP)

** Fire and acoustic results on 70 & 95mm frames are also valid on 120mm constructions

Greenwall



Construction



12.5mm RECOMA PackWall
70mm Wood Tube studs with Ekolution HF
12.5mm RECOMA PackWall

Acoustic
rating**

44 Rw (dB)

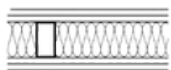
Fire
rating**

GWP Total
CO2e kg/m2*

-27,9

GWP Fossil
CO2e kg/m2*

2,1

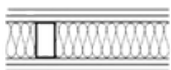


2x 12.5mm RECOMA PackWall
70mm Wood Tube studs with Ekolution HF
2x 12.5mm RECOMA PackWall

52 Rw (dB)

-49,1

3,1



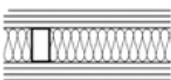
12.5mm plasterboard
12.5mm RECOMA PackWall
70mm Wood Tube studs with Ekolution HF
12.5mm RECOMA PackWall
12.5mm plasterboard

53 Rw (dB)

EI 60

-24 , 8

6,5



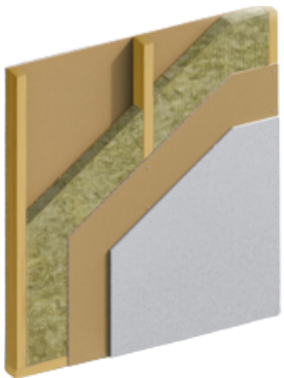
2x 12.5mm plasterboard
12.5mm RECOMA PackWall
70mm Wood Tube studs with Ekolution HF
12.5mm RECOMA PackWall
2x 12.5mm plasterboard

56 Rw (dB)

EI 120

-21,6

10,9



Wood stud + Rock wool

Construction



12.5mm RECOMA PackWall
70mm Wood stud + Rockwool
12.5mm RECOMA PackWall

Acoustic
rating**

Coming soon

Fire
rating**

GWP Total
CO2e kg/m2*

GWP Fossil
CO2e kg/m2*



12.5mm plasterboard
12.5mm RECOMA PackWall
70mm Wood Stud + Rockwool
12.5mm RECOMA PackWall
12.5mm plasterboard

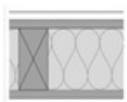
Coming soon

Coming soon



12.5mm RECOMA PackWall
95mm Wood stud + Rockwool
12.5mm RECOMA PackWall

Coming soon



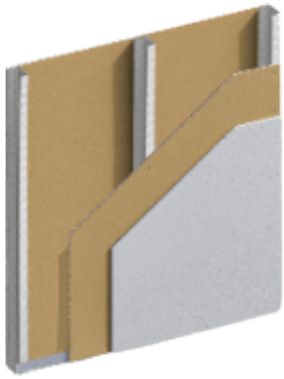
12.5mm Plasterboard
12.5mm RECOMA PackWall
95mm Wood stud + Rockwool
12.5mm RECOMA PackWall
12.5mm Plasterboard

Coming soon

Coming soon

* Data from ProdiKt.com (A1-A3 GWP)

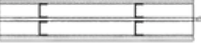
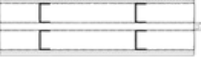

** Fire and acoustic results on 70 & 95mm frames are also valid on 120mm constructions




70mm Steel stud with no insulation

Construction	Acoustic rating	Fire rating	GWP Total CO2e kg/m2*	GWP Fossil CO2e kg/m2*
 <p>12,5mm Plasterboard 12mm RECOMA PackWall 70mm MR steel stud (no insulation)</p>	33 Rw (dB)		-5,8	5,9
 <p>12mm RECOMA PackWall 70mm MR steel stud (no insulation) 12mm RECOMA PackWall</p>	40 Rw (dB)		-18,0	4,2
 <p>12,5mm Plasterboard 12mm RECOMA PackWall 70mm MR steel stud (no insulation) 12mm RECOMA PackWall 12,5mm Plasterboard</p>	50 Rw (dB)		-14,8	8,6

Wall systems with air cavity and gypsum board

Construction	Acoustic rating	Fire rating
 <p>12,5mm Plasterboard 12,5mm RECOMA PackWall 2x 95mm C+ metal stud 12,5mm RECOMA PackWall 12,5mm Plasterboard</p>	64 Rw (dB)	
 <p>12,5mm Plasterboard 12,5mm RECOMA PackWall 2x 70mm C+ metal stud 12,5mm RECOMA PackWall 12,5mm Plasterboard</p>	60 Rw (dB)	EI 30
 <p>12,5mm Plasterboard 12,5mm RECOMA PackWall 95mm C+ metal stud 12,5mm RECOMA PackWall 12,5mm Plasterboard</p>	52 Rw (dB)	

95mm Steel stud with no insulation

Construction	Acoustic rating
 <p>12,5mm RECOMA PackWall 95mm C+ metal stud 12,5mm RECOMA PackWall</p>	44 Rw (dB)