



# RECOMA

## Väggsystem

## Säkerhetsväggar

CE

+



RECOMA

+

240520955

+

# Säkerhetsväggar med Packwall

I detta dokument finner du alla väggsystem med Packwall som uppfyller säkerhetsklass 2 enligt SSF 1047. Säkerhetsklass 2 uppnås när två lager 12 mm Recoma Packwall monteras på angreppssidan av regelverket (trä eller stål, minst 45x70 mm), med max c/c 450 mm och i enlighet med angiven skruvbild och förankring (bilaga 2 i provningsrapport P124519 Rev2 av RI.SE). För SK2 från båda sidor krävs två lager Recoma Packwall på respektive sida av regeln.

Alla väggsystem har inte genomgått alla tester, därför saknas enstaka värden på vissa uppsättningar. Om du har frågor kring något väggsystem eller dess prestanda är du varmt välkommen att kontakta oss.



NB 3062

**RI** Fire  
**SE** Research



Ackred. nr. 10445  
Provning  
ISO/IEC 17025



# Innehållsförteckning

**S. 4**

**Ståregel + Stenull**

**Ståregel + Mineralull**

**S. 5**

**Träregel + Hunton Nativo**

**Ståregel + Hunton Nativo**

**S. 6**

**Greenwall**

**70mm Ståregel  
utan isolering**

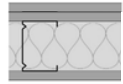
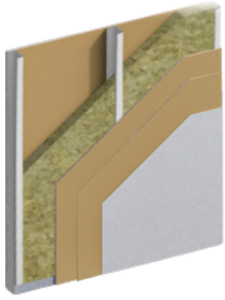
**S. 7**

**Väggsystem med luftspalt och gips**

**95mm Ståregel utan isolering**



## Ståregel + Stenull



### Konstruktion

2x 12,5mm RECOMA PackWall  
70mm MR ståregel + Rockwool isolering  
12,5mm RECOMA PackWall

Akustik\*\*

**56 Rw (dB)**

Brandklass\*\*

GWP Total  
CO2e kg/m2\*

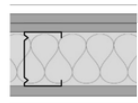
**-27,7**

GWP Fossil  
CO2e kg/m2\*

**5,7**

Säkerhetsklass

**SK2**



12,5mm gipsskiva  
2x 12,5mm RECOMA PackWall  
70mm MR ståregel + Rockwool isolering  
12,5mm RECOMA PackWall  
12,5mm gipsskiva

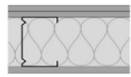
**60 Rw (dB)**

**EI 90**

**-24,6**

**10,1**

**SK2**



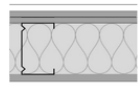
2x 12,5mm RECOMA PackWall  
95mm MR ståregel + Rockwool isolering  
12,5mm RECOMA PackWall

**59 Rw (dB)**

**-27,7**

**5,7**

**SK2**



12,5mm gipsskiva  
2x 12,5mm RECOMA PackWall  
95mm MR ståregel+ Rockwool isolering  
12,5mm RECOMA PackWall  
12,5mm gipsskiva

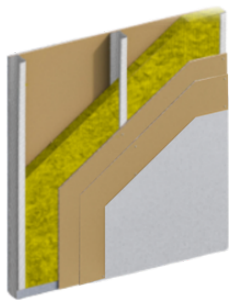
**62 Rw (dB)**

**EI 90**

**-24,5**

**10,1**

**SK2**



## Ståregel + Mineralull



### Konstruktion

2x 12mm RECOMA PackWall  
95mm C+ regler  
12mm RECOMA PackWall

Akustik\*\*

**47 Rw (dB)**

Brandklass\*\*

GWP Total  
CO2e kg/m2\*

**-28,6**

GWP Fossil  
CO2e kg/m2\*

**4,7**

Säkerhetsklass

**SK2**



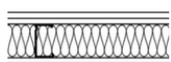
2x 12mm RECOMA PackWall  
95mm C+ regler med 45mm mineralull  
12 mm RECOMA PackWall

**54 Rw (dB)**

**-28,1**

**5,2**

**SK2**



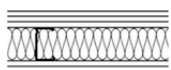
2x 12mm RECOMA PackWall  
95mm C+ regler med 95mm mineralull  
12mm RECOMA PackWall

**56 Rw (dB)**

**-27,7**

**5,7**

**SK2**



13mm gipsskiva  
2x 12mm RECOMA PackWall  
95mm C+ regler med 95mm mineralull  
12mm RECOMA PackWall  
13mm gipsskiva

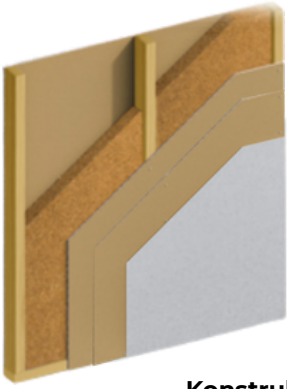
**61 Rw (dB)**

**-24,5**

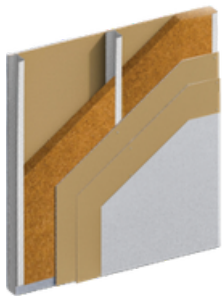
**10,1**

**SK2**






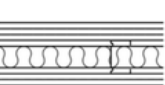
## Träregel + Hunton Nativo



Konstruktion	Akustik**	Brandklass**	GWP Total CO2e kg/m2*	GWP Fossil CO2e kg/m2*	Säkerhetsklass
 2x 12,5mm RECOMA PackWall 70mm träregel + Hunton Nativo 12,5mm RECOMA PackWall	<b>49 Rw (dB)</b>		<b>-41,2</b>	<b>2,7</b>	<b>SK2</b>
 12,5mm gipsskiva 2x 12,5mm RECOMA PackWall 70mm träregel + Hunton Nativo 12,5mm RECOMA PackWall 12,5mm gipsskiva	<b>51 Rw (dB)</b>	<b>EI 60</b>	<b>-38,0</b>	<b>7,1</b>	<b>SK2</b>
 2x 12,5mm RECOMA PackWall 95mm träregel + Hunton Nativo 12,5mm RECOMA PackWall	<b>49 Rw (dB)</b>		<b>-41,2</b>	<b>2,7</b>	<b>SK2</b>
 12,5mm gipsskiva 2x 12,5mm RECOMA PackWall 95mm träregel + Hunton Nativo 12,5mm RECOMA PackWall 12,5mm gipsskiva	<b>53 Rw (dB)</b>	<b>EI 60</b>	<b>-38,0</b>	<b>7,1</b>	<b>SK2</b>



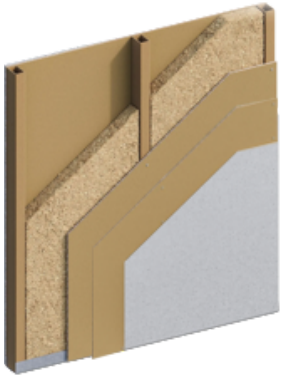
## Ståregel + Hunton Nativo

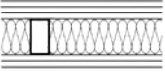
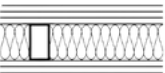
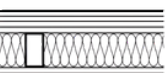
Konstruktion	Akustik**	Brandklass**	GWP Total CO2e kg/m2*	GWP Fossil CO2e kg/m2*	Säkerhetsklass
 2x 12,5mm RECOMA PackWall 70mm ståregel + Hunton Nativo 12,5mm RECOMA PackWall	<b>55 Rw (dB)</b>		<b>-33,2</b>	<b>5,7</b>	<b>SK2</b>
 12,5mm gipsskiva 2x 12,5mm RECOMA PackWall 70mm ståregel + Hunton Nativo 12,5mm RECOMA PackWall 12,5mm gipsskiva	<b>59 Rw (dB)</b>	<b>EI 60</b>	<b>-30,0</b>	<b>10,1</b>	<b>SK2</b>
 2x 12,5mm RECOMA PackWall 95mm ståregel + Hunton Nativo 12,5mm RECOMA PackWall	<b>57 Rw (dB)</b>		<b>-33,2</b>	<b>5,7</b>	<b>SK2</b>
 12,5mm gipsskiva 2x 12,5mm RECOMA PackWall 95mm ståregel + Hunton Nativo 12,5mm RECOMA PackWall 12,5mm gipsskiva	<b>60 Rw (dB)</b>	<b>EI 60</b>	<b>-30,0</b>	<b>10,1</b>	<b>SK2</b>
 2x 12mm RECOMA PackWall 70mm ståregel + 45mm Hunton Nativo 12mm RECOMA PackWall	<b>54 Rw (dB)</b>		<b>-33,2</b>	<b>5,7</b>	<b>SK2</b>
 12mm gipsskiva 2x 12mm RECOMA PackWall 70mm ståregel + 45mm Hunton Nativo 12mm RECOMA PackWall 12mm gipsskiva	<b>59 Rw (dB)</b>	<b>EI 60</b>	<b>-30,0</b>	<b>10,1</b>	<b>SK2</b>

\* Data from ProdiKt.com (A1-A3 GWP)

\*\* Fire and acoustic results on 70 & 95mm frames are also valid on 120mm constructions

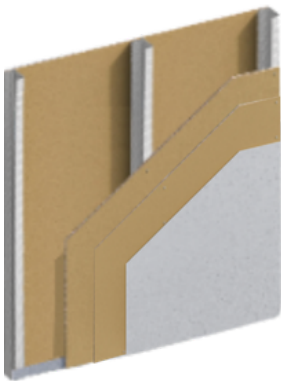
# Greenwall



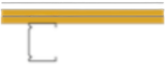


Konstruktion	Akustik**	Brandklass**	GWP Total CO2e kg/m2*	GWP Fossil CO2e kg/m2*	Säkerhetsklass
 <p>2x 12,5mm RECOMA PackWall 70mm Wood Tube reglar med Ekolution HF 2x 12,5mm RECOMA PackWall</p>	<b>52 Rw (dB)</b>		<b>-49,1</b>	<b>3,1</b>	<b>SK2</b>
 <p>12,5mm gipsskiva 2x 12,5mm RECOMA PackWall 70mm Wood Tube reglar med Ekolution HF 12,5mm RECOMA PackWall 12,5mm gipsskiva</p>	<b>54 Rw (dB)</b>	<b>EI 60</b>	<b>-35,4</b>	<b>7,0</b>	<b>SK2</b>
 <p>2x 12,5mm gipsskiva 2x 12,5mm RECOMA PackWall 70mm Wood Tube reglar med Ekolution HF 12,5mm RECOMA PackWall 2x 12,5mm gipsskiva</p>	<b>57 Rw (dB)</b>	<b>EI 120</b>	<b>-32,2</b>	<b>11,3</b>	<b>SK2</b>



## VÄGGSYSTEM - Sound Reduction Index




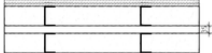
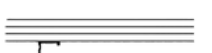
# 70mm Ståregel utan isolering

Konstruktion	Akustik	Brandklass	GWP Total CO2e kg/m2*	GWP Fossil CO2e kg/m2*	Säkerhetsklass
 <p>12,5mm gipsskiva 2x 12mm RECOMA PackWall 70mm MR ståregel (utan isolering)</p>	<b>37 Rw (dB)</b>		<b>-16,4</b>	<b>6,4</b>	<b>SK2</b>
 <p>2x 12mm RECOMA PackWall 70mm MR ståregel (utan isolering) 12mm RECOMA PackWall</p>	<b>45 Rw (dB)</b>		<b>-28,6</b>	<b>4,7</b>	<b>SK2</b>
 <p>12,5mm gipsskiva 2x 12mm RECOMA PackWall 70mm MR ståregel (ingen isolering) 12mm RECOMA PackWall 12,5mm gipsskiva</p>	<b>54 Rw (dB)</b>		<b>-25,4</b>	<b>9,0</b>	<b>SK2</b>


\* Data from ProdiKt.com (A1-A3 GWP)

\*\* Fire and acoustic results on 70 & 95mm frames are also valid on 120mm constructions

**Väggsystem med luftspalt och gips**

Konstruktion	Akustik	Brandklass	Säkerhetsklass
 <p>12,5mm gipsskiva 2x 12,5mm RECOMA PackWall 2x 95mm C+ stålregel 12,5mm RECOMA PackWall 12,5mm gipsskiva</p>	<b>66 Rw (dB)</b>		<b>SK2</b>
 <p>12,5mm gipsskiva 2x 12,5mm RECOMA PackWall 2x 70mm C+ stålregel 12,5mm RECOMA PackWall 12,5mm gipsskiva</p>	<b>62 Rw (dB)</b>	<b>EI 30</b>	<b>SK2</b>
 <p>12,5mm gipsskiva 2x 12,5mm RECOMA PackWall 95mm C+ stålregel 12,5mm RECOMA PackWall 12,5mm gipsskiva</p>	<b>54 Rw (dB)</b>		<b>SK2</b>

**95mm Stålregel utan isolering**

Konstruktion	Akustik	Säkerhetsklass
 <p>2x 12,5mm RECOMA PackWall 95mm C+ stålregel 12,5mm RECOMA PackWall</p>	<b>47 Rw (dB)</b>	<b>SK2</b>