



# RECOMA

## Väggsystem

CE

+



RECOMA

+

240520955

+

# Väggsystem med Packwall

I detta dokument finner du olika typer av väggsystem med Packwall som en beståndsdel. Du kan se de olika väggarnas prestanda vad gäller akustik och brandklass men även dess totala och fossila CO<sub>2</sub>e utsläpp.

Som du snabbt kommer att märka så särskiljer sig Recoma från mängden framförallt när det kommer till akustik och koldioxidutsläpp. Här bidrar vår skiva med en avsevärt förbättrad ljudisolering och en minst sagt betydlig minskning av CO<sub>2</sub>e utsläpp.

Alla väggsystem har inte genomgått alla tester, därför saknas enstaka värden på vissa uppsättningar. Om du har frågor kring något väggsystem eller dess prestanda är du varmt välkommen att kontakta oss.



NB 3062

RI Fire  
SE Research



Akkred. nr. 10445  
Provning  
ISO/IEC 17025



# Innehållsförteckning

## S. 4

Ståregel + Stenull

Ståregel + Mineralull

## S. 5

Träregel + Hunton Nativo

Ståregel + Hunton Nativo

## S. 6

Greenwall

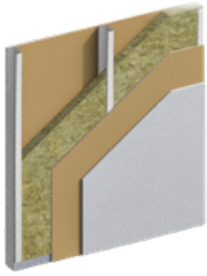
Träregel + Stenull

## S. 7


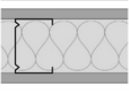

70mm Ståregel utan isolering

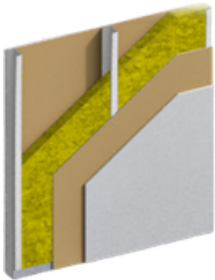
Väggsystem med luftspalt och gips

95mm Ståregel utan isolering


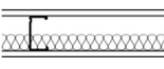
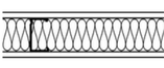
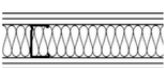


## Ståregel + Stenull

Konstruktion	Akustik**	Brandklass**	GWP Total CO2e kg/m2*	GWP Fossil CO2e kg/m2*
 <p>12,5mm RECOMA PackWall 70mm MR ståregel + Rockwool isolering 12,5mm RECOMA PackWall</p>	<b>52 Rw (dB)</b>		<b>-13,7</b>	<b>5,2</b>
 <p>12,5mm gipsskiva 12,5mm RECOMA PackWall 70mm MR ståregel + Rockwool isolering 12,5mm RECOMA PackWall 12,5mm gipsskiva</p>	<b>58 Rw (dB)</b>	<b>EI 90</b>	<b>-10,5</b>	<b>9,6</b>
 <p>12,5mm RECOMA PackWall 95mm MR ståregel + Rockwool isolering 12,5mm RECOMA PackWall</p>	<b>56 Rw (dB)</b>		<b>-13,7</b>	<b>5,2</b>
 <p>12,5mm gipsskiva 12,5mm RECOMA PackWall 95mm MR ståregel+ Rockwool isolering 12,5mm RECOMA PackWall 12,5mm gipsskiva</p>	<b>60 Rw (dB)</b>	<b>EI 90</b>	<b>-10,5</b>	<b>9,6</b>

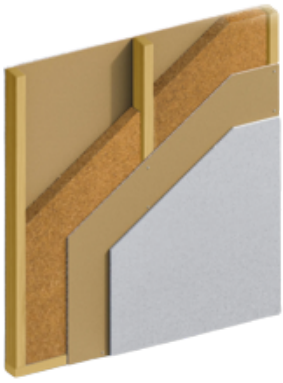


## Ståregel + Mineralull

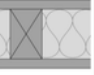
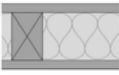


Konstruktion	Akustik**	Brandklass**	GWP Total CO2e kg/m2*	GWP Fossil CO2e kg/m2*
 <p>12mm RECOMA PackWall 95mm C+ reglar 12mm RECOMA PackWall</p>	<b>44 Rw (dB)</b>		<b>-18,0</b>	<b>4,2</b>
 <p>12mm RECOMA PackWall 95mm C+ reglar med 45mm mineralull 12 mm RECOMA PackWall</p>	<b>52 Rw (dB)</b>		<b>-17,5</b>	<b>4,7</b>
 <p>12mm RECOMA PackWall 95mm C+ reglar med 95mm mineralull 12mm RECOMA PackWall</p>	<b>54 Rw (dB)</b>		<b>-17,1</b>	<b>5,2</b>
 <p>13mm gipsskiva 12mm RECOMA PackWall 95mm C+ reglar med 95mm mineralull 12mm RECOMA PackWall 13mm gipsskiva</p>	<b>59 Rw (dB)</b>		<b>-13,9</b>	<b>9,6</b>

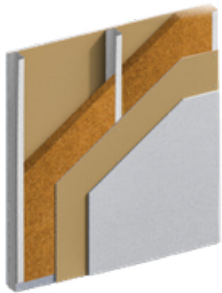
\* Data from ProdiKt.com (A1-A3 GWP)

\*\* Fire and acoustic results on 70 & 95mm frames are also valid on 120mm constructions









## Träregel + Hunton Nativo

Konstruktion	Akustik**	Brandklass**	GWP Total CO2e kg/m2*	GWP Fossil CO2e kg/m2*
 <p>12,5mm RECOMA PackWall 70mm träregel + Hunton Nativo 12,5mm RECOMA PackWall</p>	<b>48 Rw (dB)</b>		<b>-30,6</b>	<b>2,2</b>
 <p>12,5mm gipsskiva 12,5mm RECOMA PackWall 70mm träregel + Hunton Nativo 12,5mm RECOMA PackWall 12,5mm gipsskiva</p>	<b>49 Rw (dB)</b>	<b>EI 60</b>	<b>-27,4</b>	<b>6,6</b>
 <p>12,5mm RECOMA PackWall 95mm träregel + Hunton Nativo 12,5mm RECOMA PackWall</p>	<b>48 Rw (dB)</b>		<b>-30,6</b>	<b>2,2</b>
 <p>12,5mm gipsskiva 12,5mm RECOMA PackWall 95mm träregel + Hunton Nativo 12,5mm RECOMA PackWall 12,5mm gipsskiva</p>	<b>51 Rw (dB)</b>	<b>EI 60</b>	<b>-27,4</b>	<b>6,6</b>



## Ståregel + Hunton Nativo


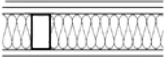
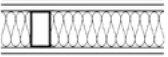
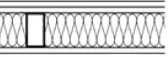
Konstruktion	Akustik**	Brandklass**	GWP Total CO2e kg/m2*	GWP Fossil CO2e kg/m2*
 <p>12,5mm RECOMA PackWall 70mm ståregel + Hunton Nativo 12,5mm RECOMA PackWall</p>	<b>51 Rw (dB)</b>		<b>-22,6</b>	<b>5,2</b>
 <p>12,5mm gipsskiva 12,5mm RECOMA PackWall 70mm ståregel + Hunton Nativo 12,5mm RECOMA PackWall 12,5mm gipsskiva</p>	<b>57 Rw (dB)</b>	<b>EI 60</b>	<b>-19,4</b>	<b>9,6</b>
 <p>12,5mm RECOMA PackWall 95mm ståregel + Hunton Nativo 12,5mm RECOMA PackWall</p>	<b>54 Rw (dB)</b>		<b>-22,6</b>	<b>5,2</b>
 <p>12,5mm gipsskiva 12,5mm RECOMA PackWall 95mm ståregel + Hunton Nativo 12,5mm RECOMA PackWall 12,5mm gipsskiva</p>	<b>57 Rw (dB)</b>	<b>EI 60</b>	<b>-19,4</b>	<b>9,6</b>
 <p>12mm RECOMA PackWall 70mm ståregel + 45mm Hunton Nativo 12mm RECOMA PackWall</p>	<b>50 Rw (dB)</b>		<b>-22,6</b>	<b>5,2</b>
 <p>12mm gipsskiva 12mm RECOMA PackWall 70mm ståregel + 45mm Hunton Nativo 12mm RECOMA PackWall 12mm gipsskiva</p>	<b>57 Rw (dB)</b>	<b>EI 60</b>	<b>-19,4</b>	<b>9,6</b>

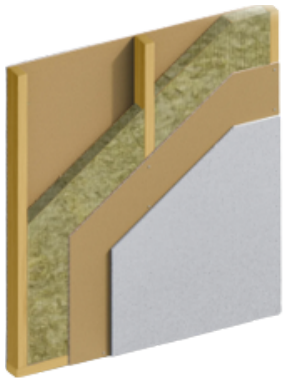
\* Data from ProdiKt.com (A1-A3 GWP)

\*\* Fire and acoustic results on 70 & 95mm frames are also valid on 120mm constructions



# Greenwall

Konstruktion	Akustik**	Brandklass**	GWP Total CO2e kg/m2*	GWP Fossil CO2e kg/m2*
 12,5mm RECOMA PackWall 70mm Wood Tube reglar med Ekolution HF 12,5mm RECOMA PackWall	<b>44 Rw (dB)</b>		<b>-27,9</b>	<b>2,1</b>
 2x 12,5mm RECOMA PackWall 70mm Wood Tube reglar med Ekolution HF 2x 12,5mm RECOMA PackWall	<b>52 Rw (dB)</b>		<b>-49,1</b>	<b>3,1</b>
 12,5mm gipsskiva 12,5mm RECOMA PackWall 70mm Wood Tube reglar med Ekolution HF 12,5mm RECOMA PackWall 12,5mm gipsskiva	<b>53 Rw (dB)</b>	<b>EI 60</b>	<b>-24,8</b>	<b>6,5</b>
 2x 12,5mm gipsskiva 12,5mm RECOMA PackWall 70mm Wood Tube reglar med Ekolution HF 12,5mm RECOMA PackWall 2x 12,5mm gipsskiva	<b>56 Rw (dB)</b>	<b>EI 120</b>	<b>-21,6</b>	<b>10,9</b>

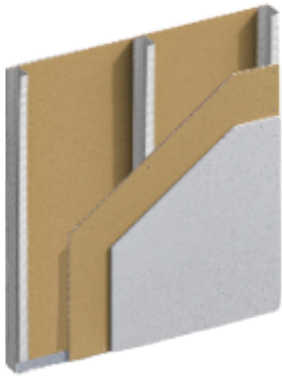





# Träregele + Stenull

Konstruktion	Akustik**	Brandklass**	GWP Total CO2e kg/m2*	GWP Fossil CO2e kg/m2*
 12,5mm RECOMA PackWall 70mm träregele + Rockwool 12,5mm RECOMA PackWall	<i>Coming soon</i>			
 12,5mm plasterboard 12,5mm RECOMA PackWall 70mm träregele + Rockwool 12,5mm RECOMA PackWall 12,5mm plasterboard	<i>Coming soon</i>	<i>Coming soon</i>		
 12,5mm RECOMA PackWall 95mm träregele + Rockwool 12,5mm RECOMA PackWall	<i>Coming soon</i>			
 12,5mm gipsskiva 12,5mm RECOMA PackWall 95mm träregele + Rockwool 12,5mm RECOMA PackWall 12,5mm gipsskiva	<i>Coming soon</i>	<i>Coming soon</i>		

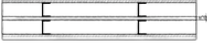


\* Data from ProdiKT.com (A1-A3 GWP)

\*\* Fire and acoustic results on 70 & 95mm frames are also valid on 120mm constructions



**70mm Stålsregel utan isolering**

Konstruktion	Akustik	Brandklass	GWP Total CO2e kg/m2	GWP Fossil CO2e kg/m2
 <p>12,5mm gipsskiva 12mm RECOMA PackWall 70mm MR stålsregel (utan isolering)</p>	<b>33 Rw (dB)</b>		<b>-5,8</b>	<b>5,9</b>
 <p>12mm RECOMA PackWall 70mm MR stålsregel (utan isolering) 12mm RECOMA PackWall</p>	<b>40 Rw (dB)</b>		<b>-18,0</b>	<b>4,2</b>
 <p>12,5mm gipsskiva 12mm RECOMA PackWall 70mm MR stålsregel (ingen isolering) 12mm RECOMA PackWall 12,5mm gipsskiva</p>	<b>50 Rw (dB)</b>		<b>-14,8</b>	<b>8,6</b>

**Väggsystem med luftspalt och gips**

Konstruktion	Akustik	Brandklass
 <p>12,5mm gipsskiva 12,5mm RECOMA PackWall 2x 95mm C+ stålsregel 12,5mm RECOMA PackWall 12,5mm gipsskiva</p>	<b>64 Rw (dB)</b>	
 <p>12,5mm gipsskiva 12,5mm RECOMA PackWall 2x 70mm C+ stålsregel 12,5mm RECOMA PackWall 12,5mm gipsskiva</p>	<b>60 Rw (dB)</b>	<b>EI 30</b>
 <p>12,5mm gipsskiva 12,5mm RECOMA PackWall 95mm C+ stålsregel 12,5mm RECOMA PackWall 12,5mm gipsskiva</p>	<b>52 Rw (dB)</b>	

**95mm Stålsregel utan isolering**

Konstruktion	Akustik
 <p>12,5mm RECOMA PackWall 95mm C+ stålsregel 12,5mm RECOMA PackWall</p>	<b>44 Rw (dB)</b>