



RECOMA

Wall Systems

Security Walls

CE

+



RECOMA

+

240520955

+

Security walls with Packwall

In this document, you will find all wall systems with Packwall that meet security class 2 according to SSF 1047. Security class 2 is achieved when two layers of 12 mm Recoma Packwall are installed on the attack side of the framework (wood or steel, minimum 45x70 mm), with a maximum c/c of 450 mm and in accordance with the specified screw pattern and anchoring (Appendix 2 in test report P124519 Rev2 by RI.SE). For SK2 from both sides, two layers of Recoma Packwall are required on each side of the stud.

Not all wall systems have undergone all tests, therefore some values are missing for certain configurations. If you have any questions regarding a wall system or its performance, you are very welcome to contact us.



NB 3062



Ackred. nr. 10445
Provning
ISO/IEC 17025



Table of Contents

p. 4

Steel stud + Rockwool

Steel stud + Mineral wool

p. 5

Woodstud + Hunton Nativo

Steel stud + Hunton Nativo

p. 6

Greenwall

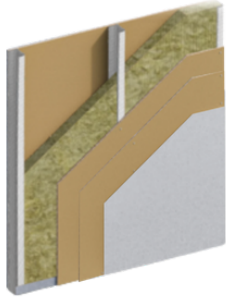
**70mm Steel stud
with no insulation**

p. 7

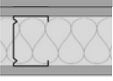
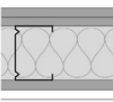
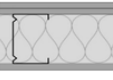

**Wall systems with air cavity and
gypsum board**

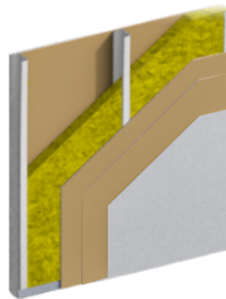
95mm Steel stud with no insulation




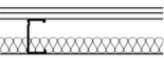
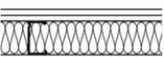



Steel stud + Rockwool

Construction	Acoustic rating**	Fire rating**	GWP Total CO2e kg/m2*	GWP Fossil CO2e kg/m2*	Security Class
 <p>2x 12,5mm RECOMA PackWall 70mm MR steel studs + Rockwool insulation 12,5mm RECOMA PackWall</p>	56 Rw (dB)		-25,8	7,4	SK2
 <p>12,5mm plasterboard 2x 12,5mm RECOMA PackWall 70mm MR steel studs + Rockwool insulation 12,5mm RECOMA PackWall 12,5mm plasterboard</p>	60 Rw (dB)	EI 90	-22,6	11,8	SK2
 <p>2x 12,5mm RECOMA PackWall 95mm MR steel studs + Rockwool insulation 12,5mm RECOMA PackWall</p>	59 Rw (dB)		-24,6	8,6	SK2
 <p>12,5mm plasterboard 2x 12,5mm RECOMA PackWall 95mm MR steel studs + Rockwool insulation 12,5mm RECOMA PackWall 12,5mm plasterboard</p>	62 Rw (dB)	EI 90	-21,4	13,0	SK2



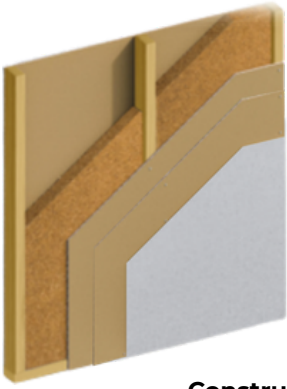
Steel stud + Mineral wool

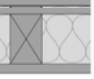



Construction	Acoustic rating**	Fire rating**	GWP Total CO2e kg/m2*	GWP Fossil CO2e kg/m2*	Security Class
 <p>2x 12mm RECOMA PackWall 95mm C+ studs 12mm RECOMA PackWall</p>	47 Rw (dB)		-28,6	4,7	SK2
 <p>2x 12mm RECOMA PackWall 95mm C+ studs with 45mm mineral wool 12 mm RECOMA PackWall</p>	54 Rw (dB)		-26,7	6,5	SK2
 <p>2x 12mm RECOMA PackWall 95mm C+ studs with 95mm mineral wool 12mm RECOMA PackWall</p>	56 Rw (dB)		-24,6	8,6	SK2
 <p>13mm plasterboard 2x 12mm RECOMA PackWall 95mm C+ studs with 95mm mineral wool 12mm RECOMA PackWall 13mm plasterboard</p>	61 Rw (dB)		-21,4	13,0	SK2

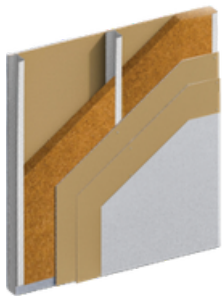
* Data from ProdiKt.com (A1-A3 GWP)

** Fire and acoustic results on 70 & 95mm frames are also valid on 120mm constructions







Wood stud + Hunton Nativo



Construction	Acoustic rating**	Fire rating**	GWP Total CO2e kg/m2*	GWP Fossil CO2e kg/m2*	Security Class
 2x 12,5mm RECOMA PackWall 70mm wood studs + Hunton Nativo 12,5mm RECOMA PackWall	49 Rw (dB)		-40,9	2,5	SK2
 12,5mm plasterboard 2x 12,5mm RECOMA PackWall 70mm wood studs + Hunton Nativo 12,5mm RECOMA PackWall 12,5mm plasterboard	51 Rw (dB)	EI 60	-37,7	6,9	SK2
 2x 12,5mm RECOMA PackWall 95mm wood studs + Hunton Nativo 12,5mm RECOMA PackWall	49 Rw (dB)		-42,4	2,8	SK2
 12,5mm plasterboard 2x 12,5mm RECOMA PackWall 95mm wood studs + Hunton Nativo 12,5mm RECOMA PackWall 12,5mm plasterboard	53 Rw (dB)	EI 60	-39,2	7,2	SK2



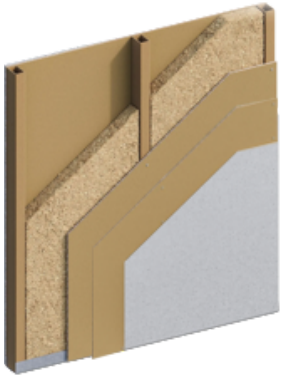
Steel stud + Hunton Nativo

Construction	Acoustic rating**	Fire rating**	GWP Total CO2e kg/m2*	GWP Fossil CO2e kg/m2*	Security Class
 2x 12,5mm RECOMA PackWall 70mm steel studs + Hunton Nativo 12,5mm RECOMA PackWall	55 Rw (dB)		-33,0	5,4	SK2
 12,5mm plasterboard 2x 12,5mm RECOMA PackWall 70mm steel studs + Hunton Nativo 12,5mm RECOMA PackWall 12,5mm plasterboard	59 Rw (dB)	EI 60	-29,8	9,7	SK2
 2x 12,5mm RECOMA PackWall 95mm steel studs + Hunton Nativo 12,5mm RECOMA PackWall	57 Rw (dB)		-34,3	5,8	SK2
 12,5mm plasterboard 2x 12,5mm RECOMA PackWall 95mm steel studs + Hunton Nativo 12,5mm RECOMA PackWall 12,5mm plasterboard	60 Rw (dB)	EI 60	-31,2	10,2	SK2
 2x 12mm RECOMA PackWall 70mm steel studs + 45mm Hunton Nativo 12mm RECOMA PackWall	54 Rw (dB)		-31,5	5,0	SK2
 12mm plasterboard 2x 12mm RECOMA PackWall 70mm steel studs + 45mm Hunton Nativo 12mm RECOMA PackWall 12mm plasterboard	59 Rw (dB)	EI 60	-28,3	9,4	SK2

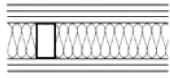
* Data from ProdiKt.com (A1-A3 GWP)

** Fire and acoustic results on 70 & 95mm frames are also valid on 120mm constructions

Greenwall



Construction



2x 12.5mm RECOMA PackWall
70mm Wood Tube studs with Ekolution HF
2x 12.5mm RECOMA PackWall

Acoustic
rating**

52 Rw (dB)

Fire
rating**

GWP Total
CO2e kg/m2*

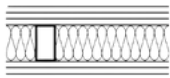
-49,1

GWP Fossil
CO2e kg/m2*

3,1

Security Class

SK2



12.5mm plasterboard
2x 12.5mm RECOMA PackWall
70mm Wood Tube studs with Ekolution HF
12.5mm RECOMA PackWall
12.5mm plasterboard

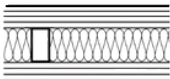
54 Rw (dB)

EI 60

-35,4

7,0

SK2



2x 12.5mm plasterboard
2x 12.5mm RECOMA PackWall
70mm Wood Tube studs with Ekolution HF
12.5mm RECOMA PackWall
2x 12.5mm plasterboard

57 Rw (dB)

EI 120

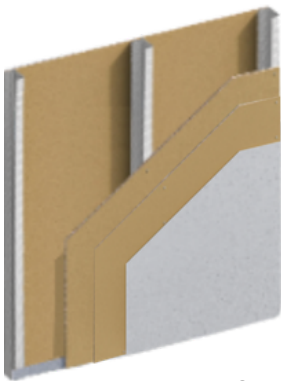
-32,2

11,4

SK2

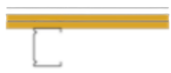


WALL SYSTEMS - Sound Reduction Index



70mm Steel stud with no insulation

Construction



12.5mm plasterboard
2x 12mm RECOMA PackWall
70mm MR steel studs (no insulation)

Acoustic
rating

37 Rw (dB)

GWP Total
CO2e kg/m2*

-16,4

GWP Fossil
CO2e kg/m2*

6,4

Security Class

SK2



2x 12mm RECOMA PackWall
70mm MR steel studs (no insulation)
12mm RECOMA PackWall

45 Rw (dB)

-28,6

4,7

SK2



12.5mm plasterboard
2x 12mm RECOMA PackWall
70mm MR steel studs (no insulation)
12mm RECOMA PackWall
12.5mm plasterboard

54 Rw (dB)

-25,4

9,0

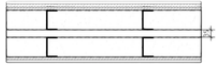
SK2

* Data from ProdiKt.com (A1-A3 GWP)

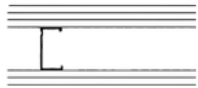
** Fire and acoustic results on 70 & 95mm frames are also valid on 120mm constructions

Wall systems with air cavity and gypsum board
Construction


12,5mm plasterboard
2x 12,5mm RECOMA PackWall
2x 95mm C+ steel studs
12,5mm RECOMA PackWall
12,5mm plasterboard

Acoustic rating
66 Rw (dB)
Fire rating
Security Class
SK2


12,5mm plasterboard
2x 12,5mm RECOMA PackWall
2x 70mm C+ steel studs
12,5mm RECOMA PackWall
12,5mm plasterboard

62 Rw (dB)
EI 30
SK2


12,5mm plasterboard
2x 12,5mm RECOMA PackWall
95mm C+ steel studs
12,5mm RECOMA PackWall
12,5mm plasterboard

54 Rw (dB)
SK2
95mm Steel stud with no insulation
Construction


2x 12,5mm RECOMA PackWall
95mm C+ steel studs
12,5mm RECOMA PackWall

Acoustic rating
47 Rw (dB)
Security Class
SK2