



**Honouring legacy, nurturing
with care, & creating
partnerships for impactful
education beyond school**



South Campus PYP - Primary Brochure

www.bischool.com



*Honouring legacy, nurturing with care, & creating partnerships
for impactful education beyond school.*



Mission

Our mission is to combine passionate, technologically innovative, student-centered approaches to teaching and learning with shared community values to foster a love of inquiry and therefore, a dedication to positive action around the world.

Vision

Our vision is to develop students who can apply knowledge, skills, and principles to contribute to the global community.

Thus, Bogaerts International School curriculum focuses on the individual learner and seeks to foster both personal and academic growth through relevant and forward-thinking learning experiences.

Key words to understand the BIS South Campus Spirit

We believe we can be a good fit
for families that value:



INTEGRITY

We model the behaviours and practices we expect our parents and students to display.

We believe in transparency before accountability.



FAMILY & COMMUNITY

We value our students' and parents' input. We value their contributions and their involvement. We want them to be a part of our ethos.



INNOVATION

We embrace novel pedagogies that seek to transform teachers, students and families. Where others see challenges, we see opportunity.



RESPECT

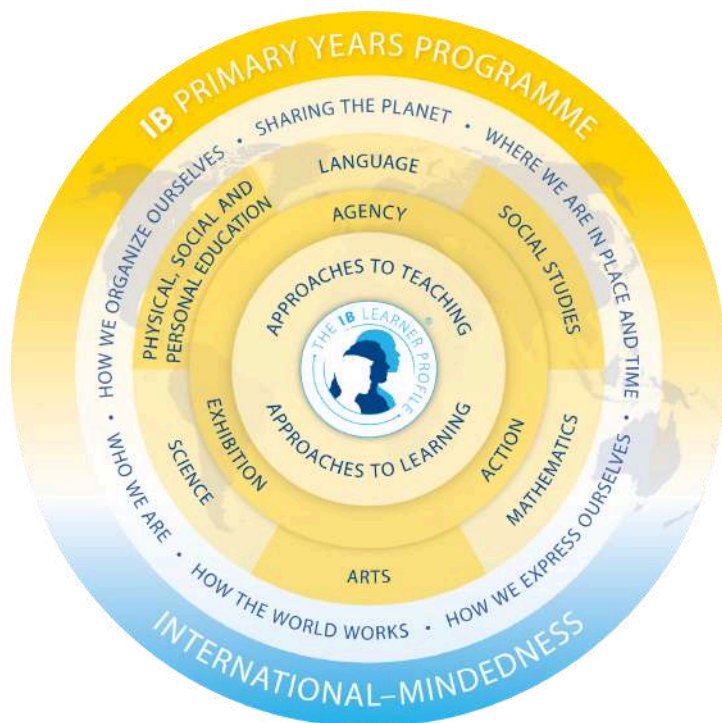
Our multicultural community celebrates diversity. We see strength rather than differences. This is what makes us unique.



COLLABORATION & PARTNERSHIPS

We strive to uphold the partnerships we establish with parents, organisations, and schools. We are committed to contributing to our local community.

The Core of our Curriculum



The PYP is more than just education—it's an invitation for students to see knowledge, skills, and personal growth as interconnected.

Through the PYP's flexible, student-centered approach, each school creates its unique learning journey, tailored to reflect the spirit and identity of its community. With the PYP, education becomes an adventure in curiosity, action, and meaningful change!













Our Concept-Based Inquiry Curriculum

At the heart of the PYP are six transdisciplinary themes that bring learning to life:

- Who We Are
- Where We Are in Place and Time
- How We Express Ourselves
- How the World Works
- How We Organize Ourselves
- Sharing the Planet

These themes break down traditional subject barriers, encouraging students to engage with real-world issues. By weaving together knowledge from multiple disciplines, PYP learners gain a deeper understanding of their studies and discover how to make a difference in their communities and beyond.

TD Themes	Who we are	Where we are in place and time	How we express ourselves	How the world works	How we organise ourselves	Sharing the planet
Reception EY1/EY2	Earth's population consists of a diversity of living things		People use different ways to communicate feelings and ideas	Natural phenomena determine people's daily routines	Humans interact with nature to create structures	
EY3	Stories mirror our culture and unite individuals	 Animals migrate for numerous reasons throughout the year	People disagree and collaborate in a harmonious community	Patterns help people understand the natural world	Signs and symbols are part of human-made systems that facilitate local and global communication	
PYP 1	Daily choices may create consequences for the individual and others	People's uses of materials vary depending on location and era	Today's lifestyle, based on amenities, may shape tomorrow's environmental equilibrium.	 Chained environmental structures constitute regional ecosystems	Effective decision-making sparks action	People can recognize atmospheric patterns regardless of their geographical location
PYP 2	Cultural elements reflect today's generation's identity	Geometry's presence defines civilizations around the world	 Diverse contexts define the way we express our emotions and ideas	Gases may lead to changes in the environment based on humans' actions	Humans utilize trade as a tool to satisfy needs and wants	Organisms' co-existence and prosperity depend on multiple variables
PYP 3	Education can empower humans in different ways to remain free	Every generation of humankind constitutes an evolution of continuity in time	People classify uniqueness through culture and religion	Energy's transferability depends on various patterns and occasions	Society functions as a diverse algorithm that constitutes a unique habitat	Mindful distribution of resources leads to less personal and social poverty
PYP 4	Efficient relationships between a network can constitute an authority	Technological advancements continue to change the world until today	 Arts evolve as people use contemporary materials	Different forms of energy facilitate the community to move	Transparent economic activities lead to a system of justice	Geology can help scientists predict the planet's future
PYP 5	Environmental patterns may function as catalysts to human genetics	 Human migration, akin to animal migration, has been an enduring and fundamental aspect of human existence since the dawn of time.	People's creativity surfaces globally regardless of the context	Time and space may offer the tools to explore Earth's origin	Humans need systems in place to live in a socio-political community	PYP Exhibition

The IB Learner Profile



Students at Bogaerts International School strive to develop the attributes and qualities necessary to become responsible members of the local and international community.

These qualities go beyond academics to become target qualities in everyday life. You will find posters which explain these attributes in every classroom. We refer to the IB learner profile in our every day teaching and learning.

Read below how you can develop each one of the attributes:

- **Principled:** I act with integrity, honesty, fairness and justice.
- **Open Minded:** I consider new perspectives and respect the ideas of others.
- **Inquirer:** I am a curious life-long learner. I can learn independently and with others.
- **Thinker:** I think critically and creatively to solve complex problems.
- **Balanced:** I create time and space for different interests (intellectual, physical and emotional).
- **Communicator:** I listen carefully and express myself confidently to collaborate.
- **Caring:** I am kind, empathetic and compassionate to myself and those around me.
- **Risk taker:** I try new approaches and show resilience when challenged.
- **Knowledgeable:** I understand and learn big ideas of local and global significance.
- **Reflective:** I think back to understand my strengths and weaknesses in order to keep improving.

Approaches to Learning (ATLs) Skills



The International Baccalaureate (IB) doesn't just teach students—it equips them with the tools to learn how to learn.

Throughout the IB Programmes—PYP, MYP and DP—the ATL skills are woven into every lesson, creating a common language for students and teachers to explore learning together.

Organized into five key categories, ATL skills build both individual strengths and academic expertise:

- **Thinking skills**
- **Communication skills**
- **Social skills**
- **Self-management skills**
- **Research skills**

This holistic approach prepares students to thrive in the classroom and beyond, ensuring they're not only mastering subjects but becoming confident, lifelong learners. By adopting the ATL framework, schools foster both personal growth and academic excellence, empowering students for success in the 21st century!



Key Concepts

At the heart of an IB education is a concept-driven curriculum that empowers students to think critically and apply their learning in diverse situations. Concepts are the key to transdisciplinary learning, bridging knowledge across subjects and cultures. While facts may change, these concepts stay relevant, helping students see the big picture.

In the Primary Years Programme (PYP), we focus on seven universal concepts:

- **Form**
- **Function**
- **Causation**
- **Connection**
- **Change**
- **Perspective**
- **Responsibility**

These concepts guide students as they explore real-world issues, revealing connections across subjects and deepening their understanding. By mastering these ideas, students gain the skills to tackle complex challenges and apply their learning to both local and global contexts. It's a learning approach that stays with them for life!



Singapore Math / Mindsets Mathematics

In the PYP, we combine the proven strategies of **Singapore Math** with **Jo Boaler's Mindset Mathematics** to build strong, confident math learners. Singapore Math focuses on deep conceptual understanding, using visual models to help students grasp complex ideas. Paired with Mindset Mathematics, which encourages a growth mindset and creative problem-solving, students are empowered to embrace challenges and see mistakes as opportunities for learning. Together, these approaches promote critical thinking, persistence, and a love for math that prepares students for real-world applications.



Our Assessment Model in PYP



We believe assessment is key to improving both teaching and learning. Think of it as taking snapshots of your child's educational journey. Our teachers continuously observe and assess student progress, gathering insights to understand what each child knows, understands, and can do as they grow.

By involving students in the assessment process, we empower them to take charge of their own learning. They become adept at using feedback to set personal goals and identify the steps needed to achieve them. Timely, constructive feedback from teachers helps students recognize their strengths and areas for improvement, fostering a proactive learning environment.

Parents and guardians play a crucial role too! By staying informed about their child's learning objectives and progress, they can offer support that reinforces skills and understanding. Together, we can create a vibrant learning community that celebrates growth and curiosity.

At the start of each unit, we provide a unit roadmap, outlining the learning goals for each subject. This helps you understand the journey ahead. Before assessments, we collaborate with your child to develop an assessment tool shared with you in advance, so you're always in the loop.

Throughout the assessment process, we capture special moments of your child's learning on Seesaw, offering real-time insights into their progress. About a week after each assessment, you'll receive a brief update on their performance, highlighting achievements and areas for growth.

Additionally, report cards will be available twice a year, in February and July, with notifications sent via email to access them on ManageBac.

By using assessment wisely, we not only enhance our teaching strategies but also ensure that our school is an even better place for learning, focused on nurturing caring, informed global citizens.



What makes our South Campus unique?

We offer an unparalleled educational journey nestled in the tranquil, green surroundings of Uccle. Our unique approach combines the Primary Years Programme (PYP) framework with a commitment to developing well-rounded global citizens.

Personalized Learning: Our small-sized classrooms allow for individualized attention, ensuring that every student receives the support they need to thrive academically and personally.

Multicultural Community: With a diverse staff representing various cultures and backgrounds, we enrich our students' learning experiences and prepare them to navigate an interconnected world with confidence and empathy.

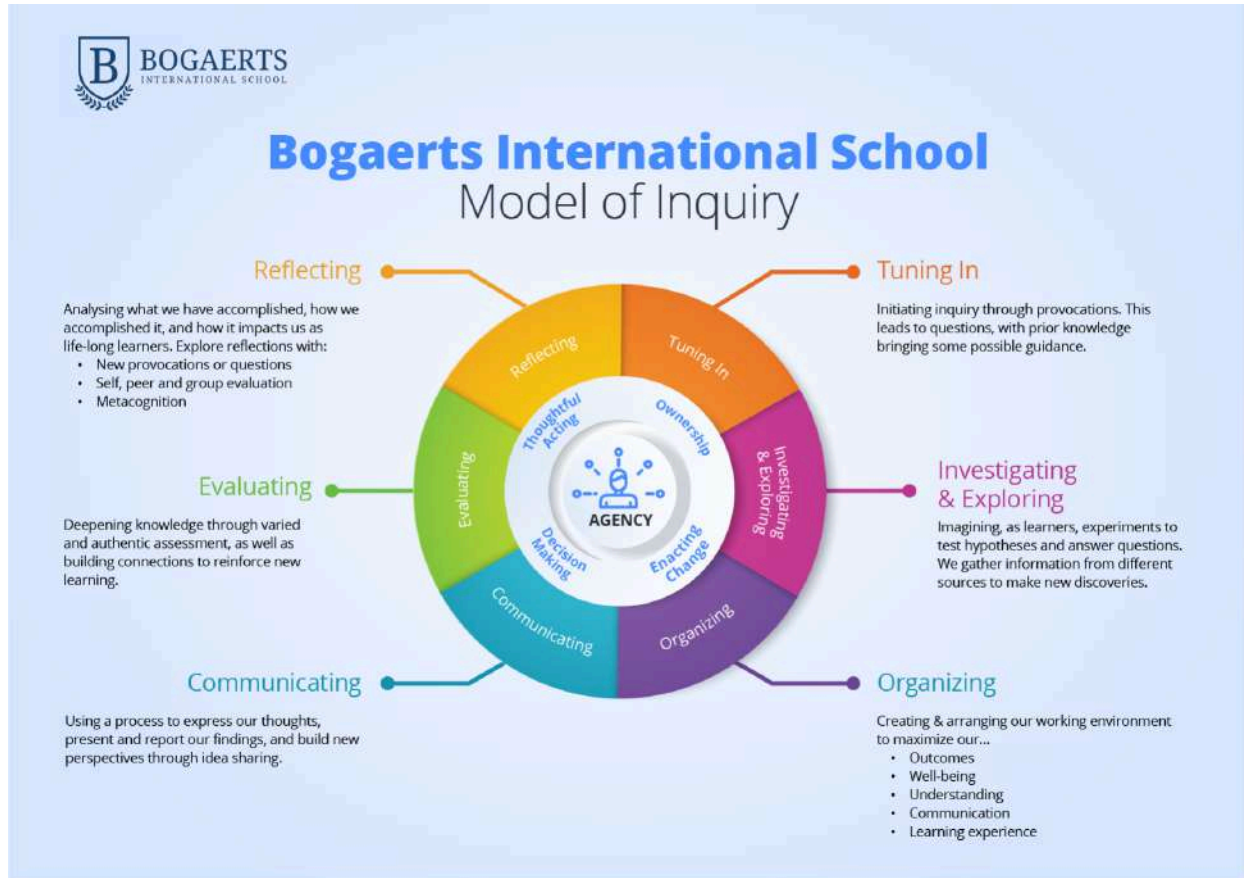
Dynamic Student Environment: The vibrant interactions among our students foster a collaborative spirit, encouraging them to respect and celebrate differences while building lasting friendships.

Rigorous Curriculum: Our challenging curriculum promotes critical thinking, creativity, and problem-solving skills, equipping students with the tools they need for future success.

Family-Oriented Atmosphere: We prioritize a warm, family-like environment where parents, teachers, and students work together to cultivate a supportive community dedicated to each child's growth.

Our vision for the future is in line with the IB mission statement, which emphasizes developing kind, informed, and tolerant people who are ready to change the world.

Experience the distinction at BIS South Campus, where top-notch instruction and a caring atmosphere coexist amid breathtaking natural surroundings. Come help us shape tomorrow's leaders!



Model of Inquiry

Our Model of Inquiry places student agency at its core, empowering learners to take ownership of their educational journey. This framework promotes a dynamic cycle of learning that engages students in **critical thinking**, **problem-solving**, and **collaborative exploration**.

The process begins with **Tuning In**, sparking curiosity and framing questions through prior knowledge. Students then progress to **Investigating & Exploring**, gathering information and testing ideas through experimentation. During **Organizing**, they structure their environment and thinking to optimize outcomes and understanding. **Communicating** encourages students to articulate their findings and share insights effectively.

Through **Evaluating**, learners deepen their understanding by connecting knowledge and assessing progress authentically. Finally, **Reflecting** allows them to analyze their achievements, fostering metacognition and a commitment to lifelong learning.

This inquiry-based approach develops resilience, adaptability, and a holistic understanding of the world, ensuring our students are equipped to thrive in an ever-changing global landscape.



Physical and Health Education and our commitment with well-being

We place a special emphasis on Physical and Health Education because we firmly believe it is a catalyst for happiness, relationship building, collaboration, resilience, and challenge-taking in adolescents. Physical and Health Education is more than just promoting fitness; it is integral to the holistic development of our students.

Our Physical and Health Education curriculum aims to help students develop a deep understanding of social responsibility and the importance of leading a healthy lifestyle. They are encouraged to take on leadership roles within their teams, promoting not only their own well-being but also that of their peers. As part of this comprehensive approach, our students attend a sports camp at ADEPS, where they have the opportunity to apply what they've learned in a dynamic and collaborative environment, further strengthening their physical and social development.

Eco School Together we go green



We embraced sustainability and environmental awareness, incorporating the principles of an "Eco-School." This program is a global initiative that encourages schools to foster a sense of responsibility toward the environment among students and staff. Here are a few highlights about how BIS integrates eco-friendly practices:

1. Green Practices and Facilities

The school actively reduces its environmental footprint through energy-saving initiatives, waste reduction, and water conservation. They prioritize sustainable campus maintenance, including green spaces and eco-friendly designs that promote biodiversity.

2. Curriculum Integration

Sustainability is a part of the curriculum across various subjects. Students engage in projects and learning that emphasize the importance of environmental stewardship.

BIS encourages hands-on learning experiences, such as recycling projects, gardening, and environmental science, to connect theoretical knowledge with real-world applications.

3. Student and Community Involvement

BIS fosters a student-led approach to environmental initiatives, encouraging students to take on leadership roles in projects focused on sustainability.

The school community, including parents and local organizations, often collaborates on eco-projects, reinforcing a community-wide commitment to environmental impact.

4. Global Eco-Schools Certification

As part of the Eco-Schools program, BIS achieved certification levels that recognize its progress and commitment. This aligns with the UN's Sustainable Development Goals, and certified schools like BIS serve as role models in eco-education.

Through these and other eco-conscious efforts, Bogaerts International School not only prioritizes high-quality education but also ensures that students develop into environmentally responsible global citizens.



Family Engagement Network - FEN



Bogaerts International School recognises parents bring invaluable insights, diverse experiences, and unique talents that can greatly enrich our school. Parents' perspectives and contributions help us create an environment that is not only academically strong but also nurturing, inclusive, and reflective of the values we all hold dear. When parents and the school work together, we can provide the best possible support for our students, ensuring they thrive both in and outside of the classroom.

Our Family Engagement Network (FEN) has made fantastic contributions through its participation and organisation of many events on campus, including the Halloween Party, St Nicolas, Charity fundraisers, International Day, and many more. Our FEN takes the lead in exploring initiatives that can contribute to enriching our community. E.g. expanding our library or adding resources for our student leisure spaces.

The invitation to join the FEN is extended to any parent or carer that joins our school.

[illegible]



BOGAERTS
INTERNATIONAL SCHOOL
One school - Two campuses
Since 1969



South Campus

Rue Engeland 555
1180 Uccle, Belgium

+32 2 230 03 39
south@bischool.com

www.bischool.com