

INTRODUCING

# Multi-Eye Hyperspectral Imaging Technology

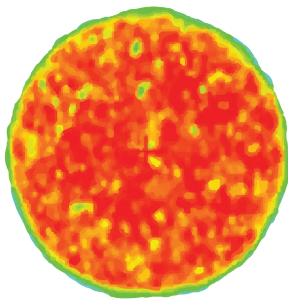
Multi-Eye Hyperspectral Imaging Technology enables advanced inspection of food products within the non-visible spectrum, offering the ability to extract the chemical fingerprint of a product's surface. For the baking industry, **hyperspectral imaging offers vital quality control applications** to manage product consistency and food safety.



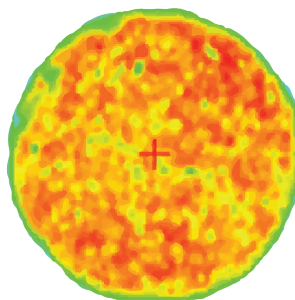
Available in  
online and at-line  
configurations.



TRUE COLOR IMAGE



MOISTURE MAPPING  
(10 MIN)



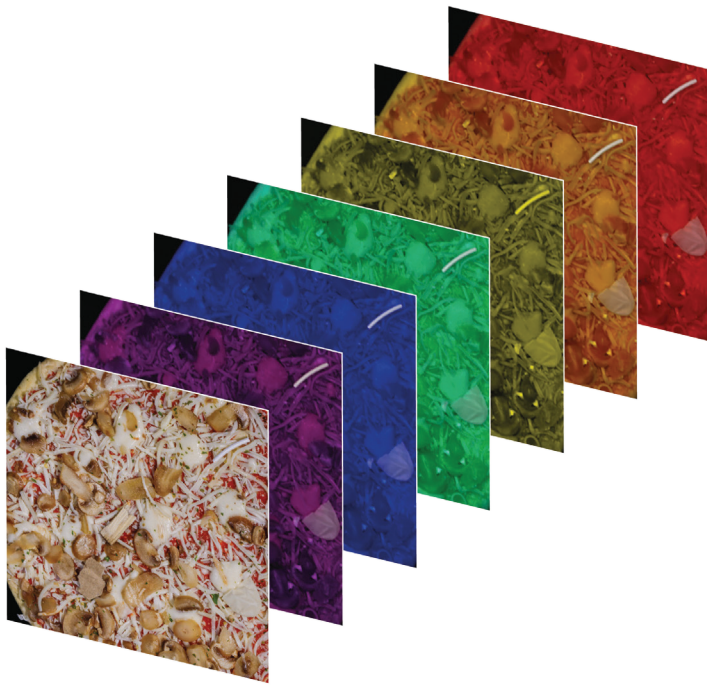
MOISTURE MAPPING  
(20 MIN)

Advanced Moisture  
Measurement and Moisture  
Distribution Mapping

LOW MOISTURE HIGH MOISTURE

Advanced Foreign  
Body Detection and  
Classification





## What is Hyperspectral Imaging?

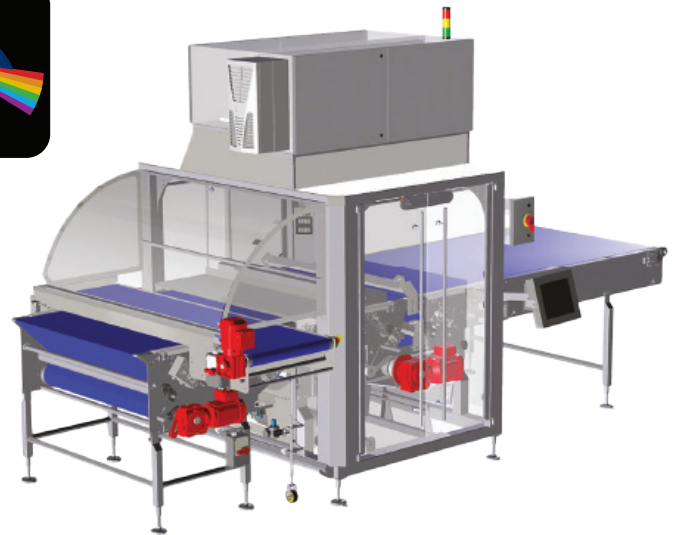
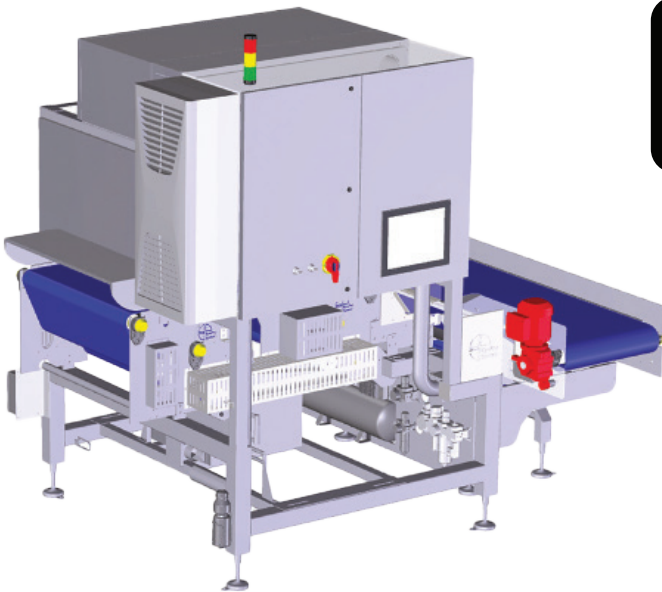
Hyperspectral imaging combines spectroscopy and imaging technologies from the Visible spectrum, to the Near Infrared (NIR) and up to the Short Wave Infrared (SWIR) spectrum.

This combined technology offers the possibility for real-time and online image analysis of features typically not detectable with traditional technologies (True Color Vision, Metal Detector and X-Ray).

### Typical applications:

- Advanced foreign body detection
- Advanced moisture measurement and moisture distribution mapping
- Product composition analysis
- Fat content analysis

## Multi-Eye can be Integrated as an Additional Vision Module to Any EyePro Inspection System



## CONTACT US TO LEARN MORE

[sales@kpmanalytics.com](mailto:sales@kpmanalytics.com) | +1 774.399.0500

### KPM Analytics

8 Technology Drive | Westborough, MA 01581 USA

Phone: +1 774.399.0500

[www.kpmanalytics.com](http://www.kpmanalytics.com) | [sales@kpmanalytics.com](mailto:sales@kpmanalytics.com)

© Copyright 2025. All rights reserved. 09.024.0464.EN.v1

