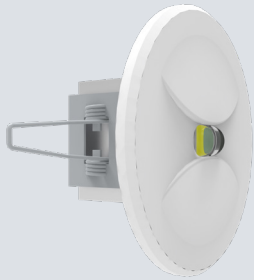
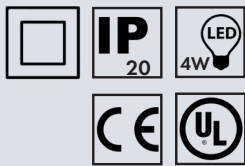


CL-4014F

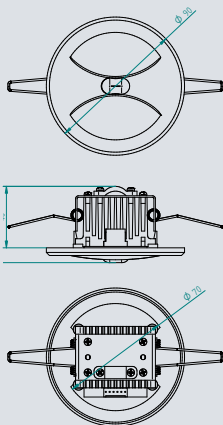
Emergency Light



Details



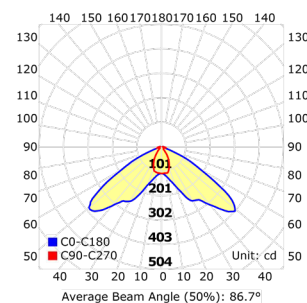
Schematic



Type	LED emergency light
Mounting	Ceiling recessed
Light source	50.000h operational time, 6000K color temperature
Luminous flux	24V:380 lm ACAC/ACDC: 342 lm CON/MB 324 lm
Warranty	5-years warranty
Dimensions	90mm x 69mm x 46mm
Housing color and material	White, black plastic
Cable connection	Max. 2.5mm ² cross-section solid or sleeved twisted wire
Operating mode:	Non-maintained
Constant nominal ambient temperature range	0 °C < T _a < 45 °C

Aesthetic LED safety light for recessing into the ceiling. It is available with lens for corridors. It has a great effective range, its practical design makes it easy to install.

Mounting height (m)	2,5	3	4	6	8	10	15
Transverse mounting	10,3	11,3	12,3	10,7	11,1	11,1	11,6
Escape route min 1 lux	4,4	4,6	3,6	4,2	4,2	4,2	3,7
Axial mounting	5,8	6,1	7	8,3	10,2	10,6	12,3
	2,3	2,6	3	3,8	4	4,4	3,9



Product name	System type	Main supply	Input current	Battery type/time	Product code
CL-4014F Slave/Con/MB	Conventional main battery	AC 120-240V	21mA	NIMH 600mA 1 h	300167
CL-4014F Slave/Con/MB	Conventional main battery	AC 120-240V	21mA	NIMH 2400mA 3 h	300168
CL-4014F Slave/Con/CB ACAC	Conventional central battery	AC 120-240V	29mA	-	300189
CL-4014F Slave/Con/CB ACDC	Conventional central battery	AC/DC 120-240V	29mA	-	300177
CL-4014F Slave/Con/CB/24V	Conventional central battery	DC 24-32V	230mA	-	300338
CL-4014F Slave/MB	Addressable main battery	AC 120-240V	21mA	NIMH 600mA 1 h	300165
CL-4014F Slave/MB	Addressable main battery	AC 120-240V	21mA	NIMH 2400mA 3 h	300164
CL-4014F Slave/RF/MB	Addressable wireless main battery	AC 120-240V	21mA	NIMH 600mA 1 h	-
CL-4014F Slave/RF/MB	Addressable wireless main battery	AC 120-240V	21mA	NIMH 2400mA 3 h	-
CL-4014F Slave/CB 24V	Addressable central battery	DC 24-32V	230mA	-	300276
CL-4014F Slave/CB	Addressable central battery	AC 120-240V	29mA	-	300171
CL-4014F Slave/CB AC-DC	Addressable central battery	AC/DC 120-240V	29mA	-	-