

Local Australian Fabricators of Mezzanine Floors and Structural Steel Packages

CGA Engineering delivers turnkey mezzanine floor and structural steel packages for industrial, commercial, and warehouse projects.

From our base in **Epping, Victoria**, we work closely with builders, developers and asset owners to provide engineered, compliant and cost-efficient structural steel and mezzanine projects - from design through to installation.

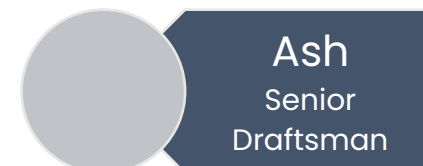
By delivering the full scope under one contract, we cut out trade clashes, keep designs practical, and reduce risk on site.

Who We Are

About CGA Engineering

CGA Engineering delivers structural steel and mezzanine packages that are designed to install smoothly – removing common site headaches through practical engineering, clear coordination, and a single team responsible for delivery.

CGA Engineering's head office, in-house design team, and manufacturing facility are centrally located in **Epping, Victoria**, allowing us to maintain **direct control over quality, coordination and lead times.**



Cutting Edge Technology

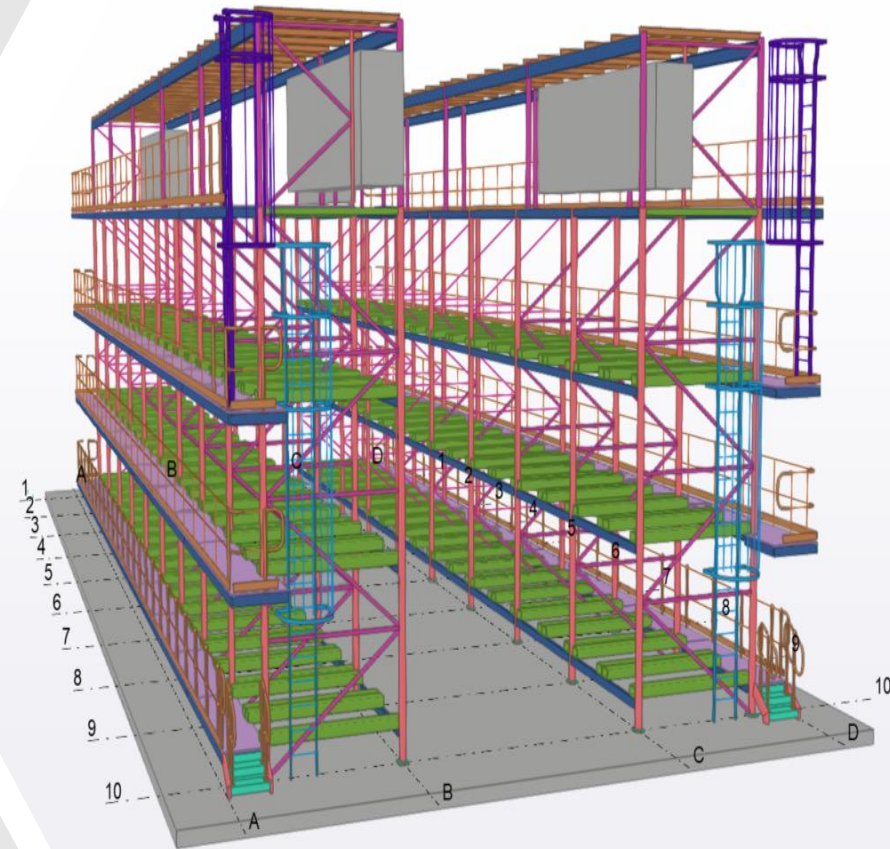
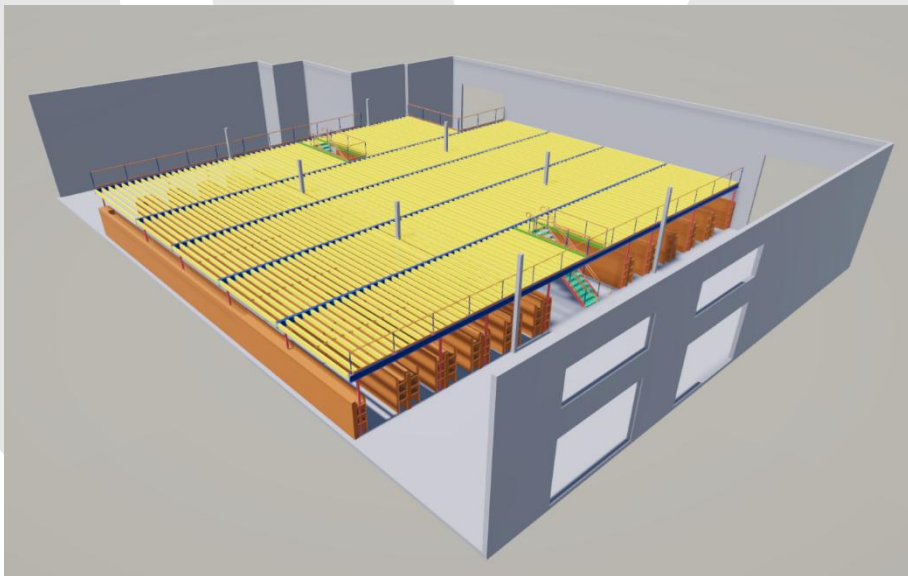
Technology that reduces on-site issues

3D Laser Scanning

Site conditions are captured accurately before design, allowing steel and mezzanine works to be modelled around existing structures, services, and constraints – reducing clashes and rework at installation.

Tekla Structures (BIM Modelling)

Highly detailed 3D models are used for structural engineering and steel detailing, ensuring components fit first time and are coordinated before fabrication and installation.



What We Deliver

Structural steel and mezzanine packages – designed, supplied, and installed

CGA Engineering delivers a single-point-of-responsibility package, managing all elements from design through to installation to reduce trade interfaces and on-site issues:

- Structural design coordination and engineering
- Structural steel supply and erection
- Structural flooring systems (plywood, particleboard, specialty finishes)
- Staircases, handrails, balustrades, and edge protection
- Installation works including cramage, access equipment, and site coordination
- Compliance documentation and project handover

By delivering all elements in-house, CGA Engineering reduces risk and helps keep construction schedules on track.



Key Services



Design & Engineering Coordination

Structural steel and mezzanine works engineered to suit operational requirements, while avoiding over-designed solutions and unnecessary steel weight and cost.



Structural Steel Fabrication & Erection

Primary and secondary steelwork fabricated and erected to Australian Standards, with detailing focused on efficient installation and site coordination.



Flooring Systems

Structural flooring systems supplied and installed to suit load and use requirements, including plywood, particleboard, and specialty finishes where required.



Access & Safety Systems

Integrated staircases, handrails, balustrades, kick rails, and edge protection delivered as part of a coordinated package to meet NCC and WHS obligations.



Project Delivery & Installation

Fully coordinated site works including cranes, access equipment, fixings, and installation – delivered by one team to reduce interfaces and on-site issues.

Why Builders Choose CGA Engineering

Turnkey Delivery – one contractor, one scope, one program

Cost-Optimized Designs – elimination of over-engineered solutions

Reduced Trade Interfaces – fewer delays and coordination issues

Australian-Based Manufacturing & Installation

Fast Turnaround – design-to-install efficiency

Compliance-Driven – designed and installed to applicable Australian Standards

Our Facilities

Our all-in-one facility in Epping, Victoria houses all the skills and equipment required to deliver complex customised structural steel and mezzanine projects.

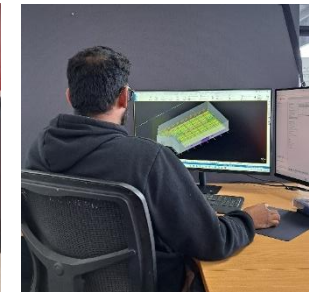
Our 1800m² facility is equipped with multiple welding bays, an in-house paint booth, and dedicated installation equipment, allowing fabrication and finishing to be completed under one roof.

This setup supports better quality control, shorter lead times, and smoother coordination from workshop through to site. A client display area is also being developed to allow clients to view products and finishes firsthand.

In-house fabrication, welding and paintwork



Experienced Design Team



Skilled Installer Teams



1600m² Floor Space with six Welding Bays and Paint Booth



Quality, Safety & Compliance

All works carried out in accordance with relevant **Australian Standards**

Engineered load ratings including (but not limited to) **3.0 & 5.0 kPa live load** mezzanine applications

Site-specific SWMS, risk assessments, and installation methodologies

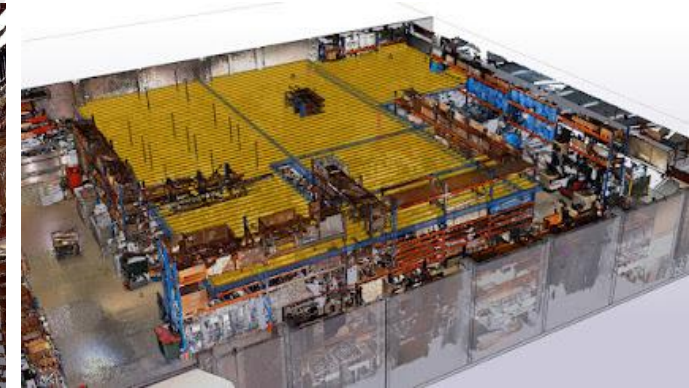
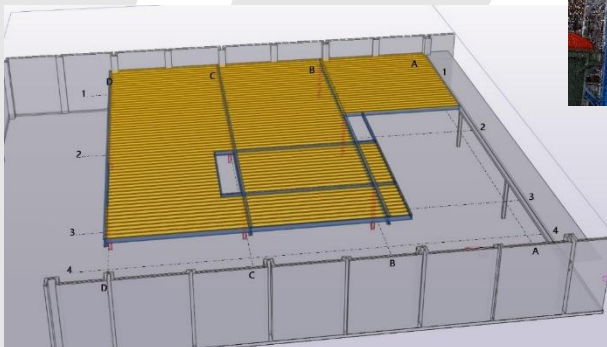
Focus on safe erection sequencing and minimal disruption to surrounding trades

Past Projects

Moorabbin Project

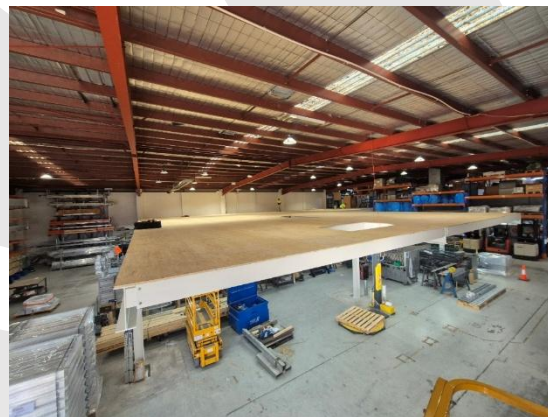
Design Phase

Client's site was 3D scanned and mezzanine design was overlaid to evaluate clashes with existing infrastructure.



Installation Phase

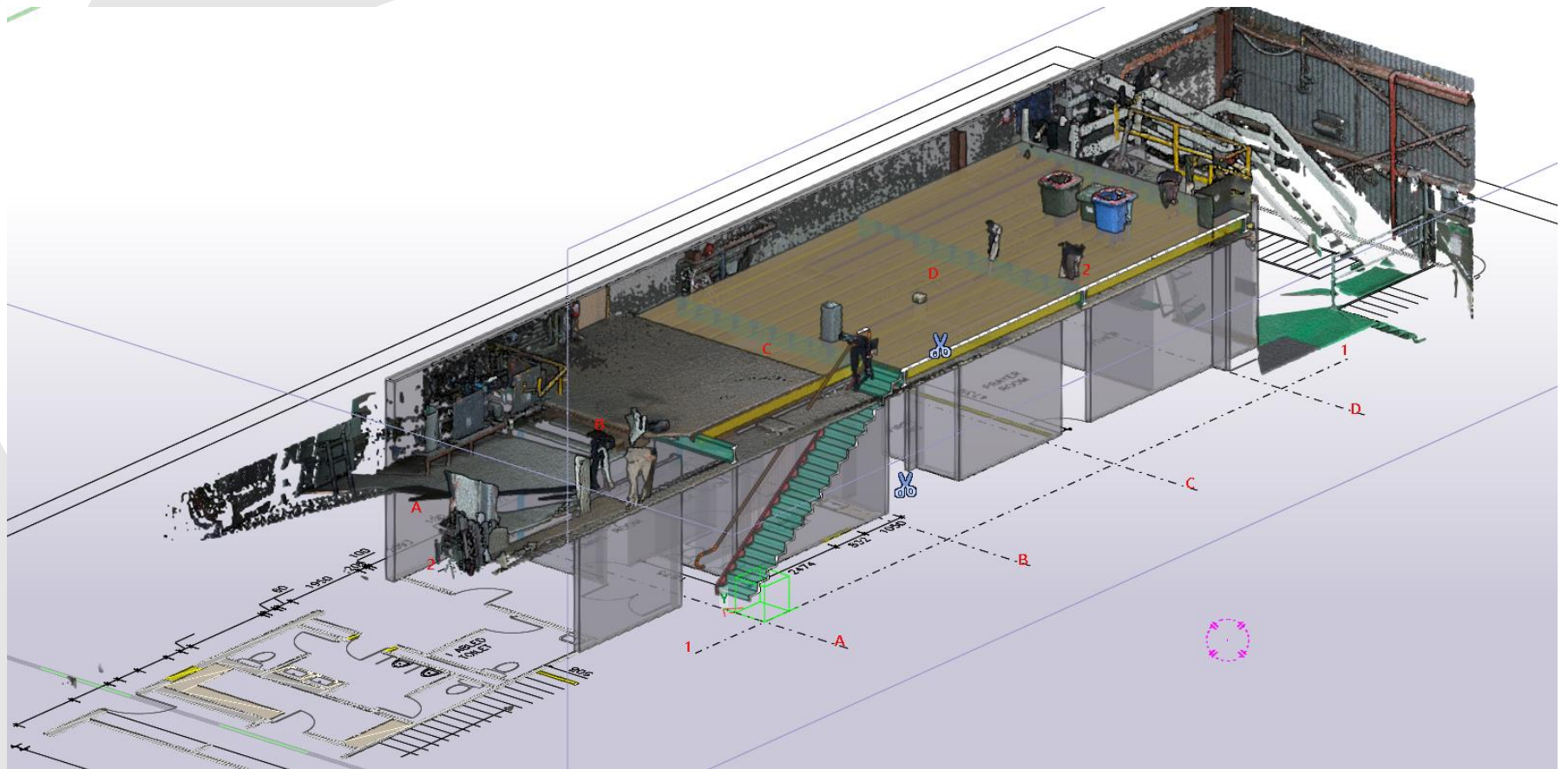
600m² Mezzanine was custom fabricated and installed on tight time frames & after hours to minimize client's disruption to production.



The completed mezzanine was seamlessly integrated into the client's production processes.

Past Projects

3D scanning allowed the design to account for existing structures upfront, resulting in a customised installation that fits cleanly within the client's operations.



Past Projects

SA Project

Multi-tier custom mezzanine with integrated access equipment



Past Projects

Cranbourne Project

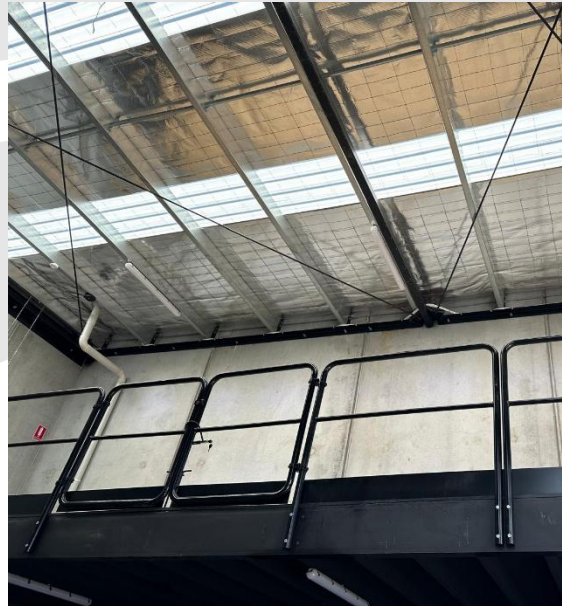
Structural steel project involving demolition of the existing roof, followed by lifting and extending the structure to integrate with the existing building.



Past Projects

Sunshine Factories project

Structural steel and mezzanine works supplied to exterior and interior of structures, installed with extensive coordination with other trades in a complex site environment.



Interior mezzanine works



Exterior structural steel work

Past Projects

Architectural
Rolled Sections for
a Visitor Center
Dunkeld VIC

