

The Papanui Quarterly

— THE —
PAPANUI
CLUB • DINING • BARS • FITNESS



Issue 10 ~ December 2025



A warm welcome to our Summer Newsletter!



With the long days warming up and the festive season in full swing, it's great to inform what we have in store for our 10,000 plus members.

Look inside to find the latest news, upcoming events and exciting entertainment lined up for the New Year.

The board & management would like to wish all our members a happy & safe festive season. May 2026 bring new adventures, opportunities, and continued friendships within our Club.

This issue:

A word from
our Club President

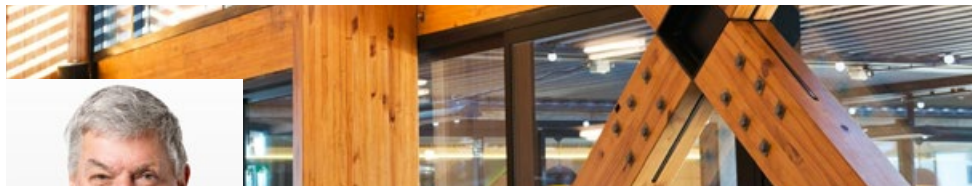
Message from our
General Manager

News from our
Club Sections

Club information
and updates

What's on - events
and entertainment

310 Sawyers Arms Rd, Christchurch • PO Box 20140, Bishopdale, Christchurch 8543
Phone: 03 359 9586 • Email: reception@papanuiclub.co.nz • papanuiclub.co.nz



A word from our President

Hello members.

Christmas has arrived and the new Founders Cafe & Bar is now open and thriving.

Our 12 Gifts of Christmas & Raffle Day was enjoyed by all, and a big thank you to all the members who donated gifts under the Christmas Tree - these have gone to Aviva.

The board is currently consulting our legal adviser about the new rate bill from City Council.

If you're interested in Outdoor Bowls,

our club will help co-host the Bowls New Zealand Nationals, which includes singles and pairs events for men, women, and people with disabilities over nine days.

On behalf of the board, staff, and myself, we wish you a Merry Christmas and Happy New Year.

Terry Stewart
PRESIDENT



Congratulations to all the lucky winners of our 12 Gifts of Christmas promotion.

Christmas present donations to Aviva.

Thanks to all our generous members for their thoughtful donations of presents for families in need this Christmas.

Your kindness and support will truly make a difference, bringing joy and smiles to those who may have otherwise gone without during the festive season. Together, we've shown that the spirit of giving is alive and well in our community.





Message from the General Manager

Just like that, another year is almost over. 2025 has been a busy and exciting year for everyone at The Papanui.

Back in February, our Family Fun Day saw a huge turnout, with around 1,500 people through the field and our membership growing to over 10,000. Be sure to mark your calendars for next year's event on **Sunday 15 February**.

In April we ran our All Blacks promotion, sending our lucky winners to Wellington for two nights to watch the All Blacks take on France in the test matches. August brought our Big Bag Grab promotion, with three lucky members each taking home a \$1,000 prize.

August also marked the beginning of a significant chapter for the Club, as we farewelled Embers and commenced our renovation project. In September, we proudly welcomed **Founders**, a fresh, bright and contemporary café and function space that incorporates the rich history of the Club, taking us back to our roots in 1959/60.



John Meates winner of the Nespresso coffee machine

In conjunction with the grand opening of Founders Cafe & Bar we ran a competition giving away a Nespresso Vertuo Lattissima coffee machine which was won by John Meates.

As we close out the year, we've just enjoyed another successful **12 Gifts of Christmas and Raffle Day**, with

many members once again filling their freezers. Congratulations to our major prize winners, and thank you to everyone who joined us on the day. I certainly enjoyed it.

We continue to sincerely appreciate the ongoing support of our members. Your support allows us, as a Club, to keep investing, evolving, and continuously driving forward with positive and progressive improvements for the benefit of our entire community.

We'll finish off 2025 and welcome

in 2026 with **Simmer live on stage** this New Year's Eve. So let your hair down, put on your dancing shoes, and celebrate the night with us.

On behalf of our management team and all our staff, we wish you a very Merry Christmas and a Happy New Year. Please stay safe, look after each other and enjoy the festive season.



Mark Belton
GENERAL MANAGER





Outdoor Bowls

The Papanui Club Outdoor Bowls Club is in great heart and has had a very successful Spring with over 40 teams of various ages and sizes competing in the very competitive Christchurch Interclub competition.

We are proud to say that this has resulted in 3 titles. Joseph Van Der Pennen won the Men's Christchurch Centre singles title then paired up with Kate Kennedy Newton to win the Mixed Pairs in the same competition.



Joseph Van Der Pennen



Joseph Van Der Pennen and Kate Kennedy Newton

As well as this remarkable success, Jono Radka and Greg Hughes were successful in winning the Christchurch Any Combination Pairs title.

Our Ultimate Bowls Tournament has also recently concluded. This is a six week competition played on Monday nights and targeted at new and social bowlers wishing to have a crack at our sport. This was every well attended and thoroughly enjoyed by all participants.

We are also holding regular Club Days on Saturdays where friendly matches are played and members get the chance to socialise with each other in our friendly club environment.

Club members are welcome to join us for these Saturday afternoon sessions – feel free to come on down, check us out and join the Lawn Bowls revolution!

If you would like to join Outdoor Bowls or get more information please contact:

Chairperson:

Trevor Sutherland 027 369 7849

Secretary:

Lynore Weeks 027 284 8111



Jono Radka and Greg Hughes



The Ultimate Bowls Tournament

**Lock in
NYE for 2025!**

LIVE BAND

New Year's Eve!

SIMMER



*Enjoy a free night of entertainment,
singing & dancing to all your favourite songs!*

Matches Sports Bar from 8pm.

Special New Year's Eve Buffet from 6pm.
Shuttle service available.

Free Entry

— THE —
PAPANUI
CLUB • DINING • BARS • FITNESS

Family Fun Day!

The Papanui
Sunday 15th Feb 2026
from 12-4pm

Live Band

BLACK & GOLD

ENCORE
ENTERTAINMENT

All proceeds from
the Sausage Sizzle
will be donated
to Hoa Motuhake
Sports Trust



Hoa Motuhake
Changing lives
through sport

Everyone Welcome!

A day to bring our community together.



Cornhole Section

GREAT YEAR FOR THE WRANGLERS!

On the 31st October, the Cornhole Section gathered together for an end of year tournament and dinner. The club prepared us a beautiful buffet down in the bowls pavilion where we played a round robin competition.

Jacob Root & Joe Sefton won the tournament and we also recognised some of our stand out members. Our most improved player of the year (Rising Wrangler) is Philip Thomas, who joined our section at the start of the year, quickly making his way up our leader board. Our most supportive player, the biggest cheerleader of the section (Wrangler's Wingman), is James



Peck, who is always encouraging others and offers endless coaching. Our True Grit Troupers, the members who continue to show up each week and give 100%, despite the outcome, are Brioney Falconer & Joe Sefton.

We honoured Lisa & Pete, from the bowls section, who continue to provide great bar service and conversation, and at times, step in to play, we now claim them both as part of our cornhole family.

We also wish to express our gratitude to Jenny & Paul Fowler, who have organised our raffle nights over the past two years, we appreciate your commitment.

KIWIS CLAIM MORE TITLES!

The NSW State Championship was held in Sydney on the 29th and 30th November. Four members from our section traveled over to compete; James & Khloe Peck and Tim & Joe Sefton. The tournament was held at Cabra Bowls, an outdoor venue, while Sydney was hit with wind speeds over 40km, making it a challenging weekend for all competitors.

The Singles tournament was held on day one and began with four games to determine ranking. James & Khloe both qualified for the Tier One competition, with James sailing into

King Seat position. He met Andy Lawler, from Illawarra, in the final, Andy winning 21-13 and 21-5 in the epic showdown for James to claim Runner Up.

Tim & Joe qualified for the Tier Two competition, with Joe remaining undefeated to land the Queen Seat position and meeting Carl Bowers, also from Illawarra, in the final. Joe took the title with a 23-10 win.

Day two we had husband/wife teams in the doubles tournament, with both couples making their way into the Tier One competition but facing each other in the first match of the bracket. The Seftons took lead and eventually placed 4th with The Pecks placing 7th.

Viewers were treated to excellent commentary again by James Peck, who stepped in to narrate a couple of games.

A huge thank you to Paul Clarke and Daniel Turner for running an excellent event and for inviting the New Zealanders over to compete. Also to the rest of the Australians we interacted with over the weekend, us Kiwis cannot wait to wrangle against you at the next event.

We would like to add that during the tournament set up on the Friday, James was showing a young Cabra Bowls representative, Jayden

Gebbie, how to play cornhole. He then registered for the Singles Competition the following day and made it through to the Tier One bracket. That is a remarkable result for someone so new to the sport, so perhaps there is some synergy between bowls and cornhole?

If you're interested in learning about Cornhole, please come along to

the Bowls Pavilion, we play every Wednesday evening from 5.30pm.*

*Cornhole takes a break from 17th December to 27th January.

If you would like to join the Cornhole Section or require further information, please contact Joe Sefton (Chairman) email: papanuicornhole@gmail.com



— THE —
PAPANUI
CLUB • DINING • BARS • FITNESS

FOUNDERS

CAFE & BAR

Open 7.30am ~ 3pm

Coffee • Breakfast • Fresh Baking • Functions





Darts Section

December 6th the darts Section held our end of year Christmas do and prize giving.

The awards went to;

Most 180's for 2025

Jared Court with 22

Cricket Pairs Winners 2025

Jared Court & Nick Drury

Grade 1 Winner for 2025

Willy Bainbridge

Grade 2 Winner for 2025

Chris Turner

Grade 3 Winner for 2025

Paul Craig

Mixed Pairs Winners for 2025

Jared Court & Rosalie Richie

Most Improved Play of the Year 2025 – Paul Craig

Open Singles Winner 2025

Barry Davis

Presidents Cup 2025 Winners

Nathan MacLennon & Mathew Wall

Pairs 2025 Winners

Jared Court & David Jones

CCCD A SUMMER LEAGUE

(5th November 2025 – 18th February 2025)

After 7 rounds the standings so far are:

Section 1 made up of 11 teams

Papanui A currently 11th

Papanui C currently 8th

Section 2 made up of 11 teams

Papanui B currently 5th

Papanui D currently 7th

CCCD A EVENTS

DNZ South Islands tournament being held in Oamaru March 4th to March 7th 2025. Papanui will have a small team of 8 representing the club.

Monday evening Public nights and practice games for members.

This is open for the public to attend free of charge. Starts at 7pm every Monday.

This is going well with on average of one person every 2 weeks enquiring of joining.

We also have Brooke, who is in a wheel chair and his carer Clayton that come down and join in every Monday night, they are a pleasure

to have around and fitted in with the group with ease.

If you are interested in joining the Darts section or require more information please email Barry: papanuidarts@gmail.com or call 021 678 415.



Willy Bainbridge grade 1 winner.



Rosalie Ritchie and Jared Court Mixed pairs.

The Papanui are
proud supporters of:





NOR'WEST BUFFET

NYE

Buffet

31st December

All you can eat for only

\$39.50 per head

Kids - \$1.50 per year of age up to 11.

Kids - 12 years and over full price.

Open for dinner from 6pm.

Plus

**Live music - SIMMER
from 8pm in Matches Bar**

Burger & Fries

\$12.50

Every
Monday



GORDON'S
PINK & SODA

NEW
ON TAP

— THE —
PAPANUI

Cheers!
cheers.org.nz

GORDON'S
...SHALL WE?





Cards Section

2025 has been a busy & productive year for the Card Section.

Pam Houghton & Brent Berg **won** the **SI Euchre Pairs** at Richmond.

Peter Alexandre **won** the **National Crib** in Auckland.

John Marshall was **1st equal** in the **National 500** at Weymouth.

Pam Houghton finished **2nd** in the **National Euchre** in Auckland.

Pam also finished **3rd** equal along with Len Gee in the **South Island 500** at Kaiapoi.

A great year for Pam.

Our Monday Flag 500 & Wednesday Euchre games continue to attract more players from all over Christchurch (open to anybody), with many also joining the card section & playing in the Interclub Competition from May to August.

Several are also now playing in the South Island & National Tournaments as they grow in confidence.

On top of that, there are also Sunday Tournaments which open to anyone and are played every Sunday around all the Christchurch Clubs.



Pam Houghton & Brent Berg pairs winners at South Island Euchre Tournament at Richmond.



Peter Alexandre won at 2025 Crib Nationals at Papanui.

So lots to choose from, for those who just want a fun afternoons game of cards with like minded people, to those who want to play in South Island & National tournaments.

Play for the year finishes the week before Xmas & restarts on Monday 12th January.

Merry Christmas to you all.
Alan Neale - Secretary.



Our Papanui team at National 500 Champs at Weymouth Club, Left to right: Phil Ainsworth, John Marshall, Valerie Hore, Alan Neale & Pam Gifkins (front).



Pam Houghton & Len Gee Papanui in the winners circle at the South Island 500 Tournament at Kaiapoi with other place getters from Kaiapoi & Oxford.



John Marshall receiving runner up trophy at National 500 at Weymouth from Jude Harding tournament conveyer.



Hosting National Crib in May.



— THE —
PAPANUI
 CLUB • DINING • BARS • FITNESS

Don't forget to follow us on facebook!

Thank You

Volunteer of the Year Award

JOHN MARSHALL

This years recipient of the Bob Johnson Trophy was John Marshall for services to the Cards section.

John is a committed Card Section and Club member who applies himself with vigour to any task assigned.

John also has an entertaining personality and aside from Cards you will also often find him having a flutter at the TAB or partaking in a pint in the Club Bar.

THE BOB JOHNSTON TROPHY:

This trophy is presented each year to an outstanding volunteer who works hard to improve their section or the Club. It is in memory of Bob Johnston who died 17 years ago was donated by his children Robin and Donna.

If you have someone from your section that goes above & beyond, volunteering their time, please nominate them so that this trophy can keep going in his memory.





Live Music

Becky Mayes

**Club Bar 6.45pm
Friday 16th January**



NEW

GUINNESS 0%

**ALL THE TASTE
NONE OF THE
ALCOHOL**

Cheers!
cheers.org.nz

Triple Treat

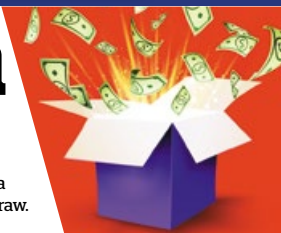
THURSDAYS

Please
note:
Pick 'n Win
Returns
8th Jan

Pick 'n Win

**Be in to win up to \$350 in points
every Thursday at 6pm!**

Every \$10 spent on food & beverage between 4-6pm earns you a
ticket to place in any of the \$50, \$100 or \$200 boxes to be in the draw.

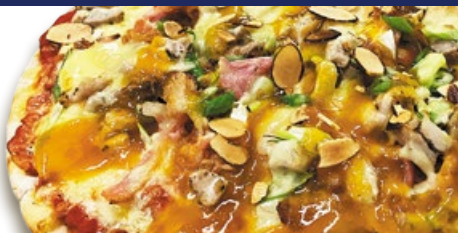


15% Off

Drinks all day and the
Nor'Wester Buffet from 5.30pm

2_{for} \$30 Pizza

All day Thursday





**Looking for a great venue
to hold your function?**

FOUNDERS

CAFE & BAR

Founders Cafe & Bar at The Papanui could be just what you're looking for.

For groups from 20 - 100 with fantastic ambience it is the perfect venue for corporate functions, parties or any special occasion.

- Great indoor or outdoor flow
- Private function room
- On-site bar and catering
- Superb food options
- Plenty of on-site parking
- Just 10 minutes from the city!

For further information call **359 9586** or email **functions@papanuiclub.co.nz**





Indoor Bowls Section

It has been a busy three months for Indoor Bowls as we wrap up our season for 2025.

First off the block is our Championship Fours. Four teams qualified for post section play, John Blackburn, Kylie Gould, Garry Hall and Graeme Bayley. Garry's team of Brad Henry, Ken Blackler and John Newton defeated Graeme's team of Christine Prattley-Cook, Sue Blackler and Kelly Grey by 6-5 to become one finalist while Kylie's team of Katrina Wealleans (replaced by Neil McConachie for post section), Jalene Gould & Phil Thomas defeated John's team of Gaynor Stevenson, Tony Cook

and Andrew Lane by 7-6. The final saw a win to Kylie Gould by 10-5.

Papanui has been well represented at both Canterbury Chartered Clubs and Canterbury Indoor Bowls Association levels over recent months. Simon Thomas, Kylie Gould, Julie Thomas and Sue Blackler placed second in the Chartered Clubs Championship Fours and our Ladies team of Christine Prattley-Cook, Gaynor Stevenson, Sue Blackler and Kylie Gould won the Challenge Shield. Our Men's team of Gordon Dixon, Brad Henry Neil McConachie, Trevor Stowell and John Blackburn finished third in the Bush Kennedy



Championship Fours winners, left to right: Kylie Gould, Jalene Gould, Neil McConachie and Phil Thomas.



Challenge Shield winners, left to right: Gaynor Stevenson, Sue Blackler, Christine Prattley-Cook and Kylie Gould.



CCC Championship Fours runners up, left to right: Sue Blackler, Julie Thomas, Simon Thomas & Kylie Gould.

tournament. Kylie Gould went on to win the Canterbury Chartered Clubs Champion of Champion Singles.

We had our AGM during September and our section committee for the coming year is as follows:

President: Neil McConachie

Secretary: Christine Prattley-Cook

Treasurer: Gillian Fallow

Committee: Gordon Dixon, Sue Blackler, Ken Blackler, Noeline Newton, Trevor Stowell and Dave McKay.

Club Captain: Gordon & Dave are sharing the role for the coming season.



Dave McKay, recipient of Life Membership of the Indoor Bowls Section.

Finally, the section bestowed life membership on Dave McKay.

Dave already has life membership of the Papanui Club and has been a long time member of the section committee. In recent years, he has juggled both President and Club Captain roles.

The life membership was conferred at our annual dinner and prizegiving function held at the club.

On behalf of the Indoor Bowls Section, we wish all readers, a very Merry Christmas and a Happy New Year!



Our end of season function.

HURRY
Almost sold out!



CLUBS NZ

@METHVEN

SUNDAY 25TH JANUARY

RACING FUN IN THE CANTERBURY SUN

COURSE ENTRY

ACCESS TO CLUBS NZ VILLAGE

BBQ LUNCH & REFRESHMENTS

LIVE ENTERTAINMENT

BEST DRESSED PRIZES

SWEEPS & INTERCLUB COMPETITION

PER PERSON

\$90

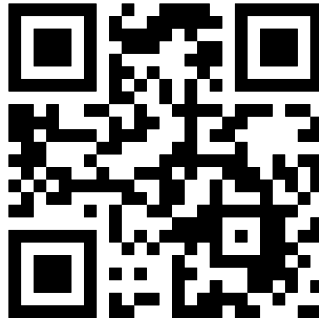
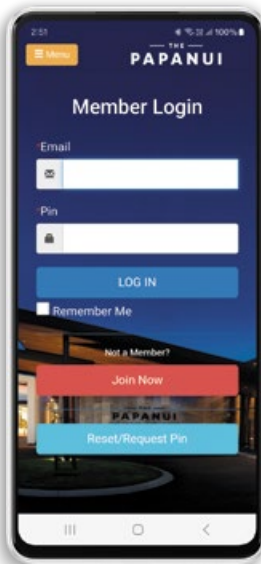
60'S & 70'S THEME

ON SALE TUESDAY 9TH DECEMBER 9am
ONLY 49 SEATS AVAILABLE
FIRST IN FIRST SERVED



CLUBS
NEW ZEALAND INC

Download our Mobile App



Join or renew membership, earn and view loyalty points, view transactions and enjoy all our Club discounts and promotions!

1. Simply scan the QR code above, or visit Google Play for Android or the AppStore for Mac and search The Papanui.
2. Download the The Papanui app, to install.
3. Existing members - click the light blue RESET/REQUEST PIN button and follow the instructions.
4. New members - click the red JOIN NOW button to join and follow the instructions.
5. Please be aware when joining for the first time or resetting your PIN number your email confirmation may appear in your SPAM or JUNK folder.
6. When you log in, click on the Remember Me box to avoid having to log in every time.
7. Your membership details and Club information are now at your fingertips.

Please make sure you check My Details are all correct to be part of our Club discounts and promotions!



Garden Section

Full steam ahead for the garden section!

We have had a great time over the last 3 months with a talk from David Barwick of the Botanical Gardens on Colour in our Borders. Our Spring members garden tour featured 2 interesting gardens with a cup of coffee to finish with. In October we had an interesting talk from Hungry Worms, also in October we had our bus trip to Rakaia & Rolleston and November a visual presentation on the 2025 Taranaki Garden festival.

We have a great time on our bus trips enjoying a selection of beautiful gardens and sharing morning & afternoon tea.

We have also started a casual morning tea for our members on the 4th Thursday of the month in Founders Café. This gives us a chance to get to know each other better over a coffee and cake!

New members are always welcome, we meet on the second Wed of the month 7pm in meeting room 1.





SHARING SPECIAL

Every Weekend 2~7pm

**Ploughman's
or Seafood Platter**

only

\$25



**Or try our
Smokehouse
Sharing
Board**



only

\$62

For 2-4 people

Our Week Every Week

MONDAY

\$12.50 Burgers & Fries

TUESDAY

NZ's Biggest Weekly **Quiz Night**
plus \$15 Wraps - add fries \$3.50

SuperGold Card

\$15 Roast until 5pm*



WEDNESDAY

Club Members **2 for 1 Meal Deal****

THURSDAY

2 for \$30 Pizzas

15% OFF drinks all day and the
Nor'West Buffet from 5.30pm***

FRIDAY

The Papanui Cash Draw 6.30pm

SATURDAY & SUNDAY

\$25 Platters 2pm - 7pm

Antipasto or Seafood Platter or try
our **Smokehouse Sharing Board**
for 2-4 people for only **\$62**

Nor'West Buffet

Open Thursday to Saturday
from 5.30pm. Sunday from 5pm

Shuttle Service

Available Thursday to Sunday
from 3pm

Raffles

Thursday to Saturday from 4pm
Sunday from 3pm

* You must present your SuperGold card to receive the roast deal.

** See Wednesday Menu for T&Cs.

*** The Nor'West Buffet is open to all members and non-members,
Thursday to Saturday from 5.30pm and Sunday from 5pm.

Reception - open Monday to Thursday 9am-5pm,
Friday 9am-6.30pm, Saturday & Sunday 11am-2pm.

**Download our
Mobile App**





Leisure Marching Section

Papanui Leisure Marching Team - Fun, friendship and fitness.

Another quarter of the year completed, and what a time! The team is back outside practicing every Tuesday at 5 :00 PM at Cotswold School; then we go back to the club for a chat and a drink.

In October, the team marched at the South Island Leisure Marching day in Nelson with 27 other teams. It was a fantastic event, and everyone had a great time marching, dancing, singing, and sharing lots of laughter.

We are now working towards the NZ Leisure March display day to be held

in Rangiora on March 27- 28 2026. Any past marchers a welcome come out to enjoy the display and catch up with old friends.

We hosted a very successful car boot sale, thanks to the Papanui Club, staff, and friends who helped make this a success. We all felt very supported by the clubs team, thanks.

Anyone who would like to give marching a try can approach one of the team or call the number on the brochure in the foyer.

Merry Christmas, and by the left, quick march into 2026.





FOMS

(Friends of Multiple Sclerosis & Parkinson's Canterbury)

The Papanui is proud to announce that members have raised \$5,000 for FOMS from ham raffles this year with an additional \$500 from the Charity Raffle Week.

Opposite shows Lina Stroud from MS & Parkinson's Canterbury gratefully accepting the donation from Tony Baillie at their annual Christmas luncheon held recently.

Thank you to all our members who helped support this charitable society.

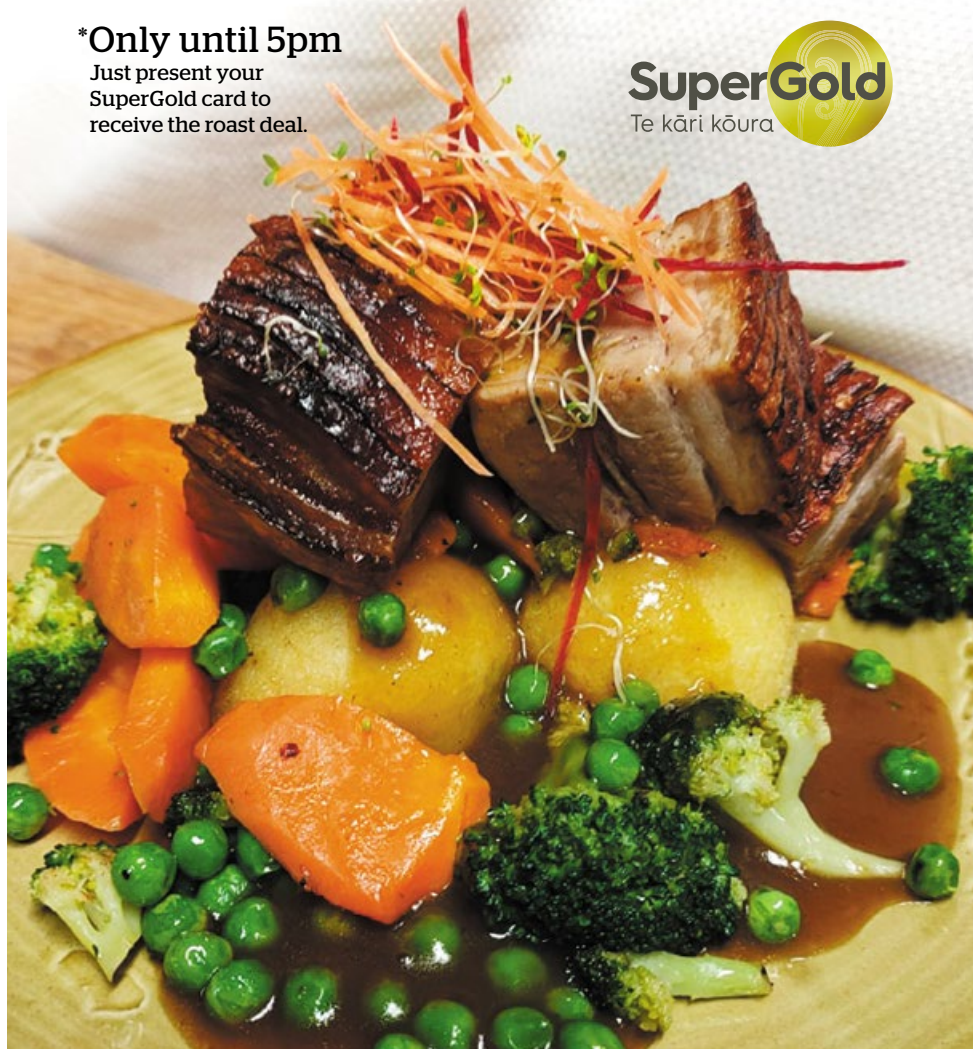


Tuesday SuperGold Card

\$15 Roast*

***Only until 5pm**

Just present your
SuperGold card to
receive the roast deal.





Petanque Section

Since our last update in September our section has welcomed several new members - so a big welcome to our new members - George, Francis, Clare and Charles.

Great to see you all enjoying playing petanque here at Papanui.

Meanwhile some of our members have been busy competing in three separate competitions.

One of the competitions was an interclub competition between Ashburton, Christchurch and

Papanui clubs in which our club members participated well.

The other two were our own competitions.

We had our Annual General meeting at the Papanui Club on Sunday 30 November, and this was followed by a Christmas buffet for the members with a great turnout for the meeting and the meal. It was an excellent buffet and great company.

The newly Elected Committee for 2025-2026 is:



Art and Anne.



Marion and Colin.

Club Chairperson – Caroline Kinloch,

Vice Club Chairperson – Cheryl Armour,

Club Secretary – Robyn Draper,

Club Treasurer – John Smart,

Committee Members - Bruce Cameron, Fee Penny, Catherine Patey and Teresa Newman.

Match Committee – Jim Tait and Graham Harper.

RECENT CLUB COMPETITION RESULTS

On 30 September we held the Gordon Forrester Club Drawn Pairs

1st - Art Vernon and Anne Clarkson

2nd - Maryon Beer and Colin Wafer

On 14 October we held the Stewart Trophy Club Drawn Triples Championship

1st - Art Vernon, Linda Kay, Phil Patey

2nd - Rob Armour, Maree Preston, Caroline Kinloch

Many thanks to the Match Committee members, Graeme Harper and Jim Tait, for the smooth running of our club competitions.

We have several competitions ahead of us for 2026 with good interest from members wishing to compete. The competitions are a great way to learn more skills and pick up some great playing tips, plus they are good social events. Good luck to all our members who compete.

Our section practices days are Tuesday and Sundays - 12.45pm to 3.00pm. Do come and to see what Petanque is about. You will be welcomed on any of the practice days by our friendly members who are keen to pass on their skills and knowledge of petanque.



Art, Linda and Phil.



Rob, Maree and Caroline.

IGNITE

FITNESS



The best kept secret in the North West

Lose weight, feel stronger & get toned.
Friendly trainers, programmes available,
ample free parking and great modern facilities.

Mon-Fri: 5:30am-9:30pm
Weekends/Public Holidays: 5:30am-6:30pm.

Join today **only** **\$400**
12 Months Subs

03 359 9586 Ext 706 • gym@papanuiclub.co.nz



Now on tap

Indulgent, creamy with rich flavours of espresso coffee and a touch of sweetness.

KIRIN 氷結[®] HYOKETSU

A refreshing blend of vodka, soda, and frozen natural lemon juice that delivers intense flavour.

Now
on tap





Golf Section

What a year it has been for our Golf Section! Thanks to everyone who joined us throughout 2025 — whether you played one round or every round, you helped make it memorable.

MONTH-BY-MONTH HIGHLIGHTS

January – Amberley Golf Club

We kicked off the year at Amberley with our traditional Ambrose format — a great start to the season.

February – Ellesmere Golf Club

A well-attended outing as we began the first of four qualifying rounds for the Club Champs.



A chilly morning in July at the Kaiapoi Golf Club.



Enjoying a refreshment stop on the way home from Tinwald Golf Course in April.

March – Waimakariri Gorge

A slight hiccup when bookings went astray and we found ourselves sharing with Richmond Golf Club. The “responsible party” received a thorough reminder of their duties at the AGM afterwards! Most committee members were re-elected, and we were pleased to welcome Craig Rhodes to the committee.

April – Tinwald Golf Club

The bus down was quick... the return trip, however, seemed significantly slower. No official explanation offered - but we suspect refreshment delays may have played a role.

May – Back to Winter Reality

A promising sunny start turned into cold rain and wind by the 9th hole. The vote was unanimous: 9 holes was plenty!

June – Amberley Again

The top 8 battled it out for a place in the Club Champs semi-finals.

July – Kaiapoi Golf Club

Chilly but enjoyable — golfers are hardy creatures.

August – Bottle Lake Golf Club

Semi-final time! Great player turnout, though that did mean a little extra waiting on tees.

September – Greendale Golf Club

Where Bottle Lake had great numbers... Greendale did not. Fewer than 20 braved the day — thanks to those who did!

October – Rangiora Golf Club

Freshly cored greens made putting very... creative. With the clubhouse closed due to illness, our fearless leader saved the day with food and

drinks back at the Papanui Club — enjoyed by all.

November – Hororata Golf Club Club Champs Finals Day!

Congratulations to Sue Collins and Dan Johnson on their titles.

December – McLeans Island Golf Club Ambrose

We started with an Ambrose, so it made perfect sense to finish with one. Very hot, very windy, and very enjoyable! Followed by our end-of-year function and prizegiving at the Papanui Bowling Club.

A note from the Committee

We'd like to raise a small but important concern: raffle assistance. Raffles are the only revenue generator for our Golf Section - and yet, whenever help is asked for, it feels a bit like pulling teeth.

A huge thank-you to the dedicated few who consistently step up. But to keep our section strong and thriving, we need everyone to lend a hand now and then. Many hands make

light work - especially if those hands are already holding clubs!

Season's Greetings

Have a Merry Christmas and a Prosperous New Year!

Enjoy the break - and we look forward to seeing you at our first game of 2026:

11 Jan 2026 - Amberley Golf Club

**Thank you for your continued support.
Your hard-working committee.**



Chris Turner (Moose) celebrating the worst net of the day at Hororata!



A big thumbs-up for a great day at Hororata!

2025 CLUB CHAMPIONS



Senior Mens - Wayne Pluck.



Ladies - Sue Collins.



Intermediate - Grant Milner.



Junior - Craig Morganty.

2025 MATCH PLAY CHAMPIONS



Winner - Sue Collins.



Plate Winner - Dan Johnson.

"Heart of the Northwest"

— THE —
PAPANUI
CLUB • DINING • BARS • FITNESS



Join The Papanui today

Annual membership is just **\$35** and the perks are amazing!
Here's what you'll enjoy:



Free Birthday Buffet

Valued at \$33.50, celebrate your special day on us!



3% Reward Points

Earn points every time you spend and enjoy the rewards.



Exclusive Promotions

Enter members-only cash draws and major giveaways!



Members-Only Deals

Savour our 2-for-1 Wednesday Meal Deal!



Affordable Shuttle Service

Convenient and budget friendly transportation.



Activities - 17 different sport and social sections to join.



Modern & Clean Facilities

Relax in style and comfort.



Live Entertainment

Enjoy top-notch performances as part of the fun!



Digital Membership Card/

Mobile App – Enjoy seamless access to your benefits, exclusive offers and updates all in one place!



Don't miss out on these amazing benefits.

Join or renew today!

Joining is as easy as downloading our mobile app
or going to our website [www.papanuiclub.co.nz/
membership-information](http://www.papanuiclub.co.nz/membership-information) or visiting our reception.

**Download our
Mobile App**



Holiday Hours

The Papanui

Closed 25th Dec Christmas Day

Office

Open 24th Dec 9am - 1pm

Office closed 25th - 28th Dec

Open 29th - 31st Dec, 10am - 1pm

Office closed 1st - 4th Jan

Open 5th - 18th Jan limited hours:
9am - 1pm, Mon - Fri

Returns to normal 19th January.

Buffet

Christmas themed buffet \$39.50
4th - 21st December (Thurs - Sun)

Closed 25th Dec - 7th Jan

New Years Eve Buffet \$39.50
from 6pm

Live music - SIMMER
from 8pm in Matches Bar

Returns to normal 8th January.

Founders Cafe

Closed 25th - 26th Dec.

Closed 1st Jan.

Returns to normal 2nd January.

Quiz

16th Dec Xmas Quiz - final for year.

Returns to normal 13th January.

2 for 1 Meals

10th December final one for the year.

Returns to normal 7th January.

Cash Draws

19th December final one for the year
and is a **SUPERDRAW** plus Reminisce
with Anthony playing live, Club bar.

Returns to normal 8th January.

Shuttles

As normal except New Year's Eve:
New Year's Eve from 4pm

Download our Mobile App





Wine & Food

And just like that 2025 is nearly over! What a year it has been too...

Another great assortment of speakers came along this year with I think the highlight being Eldred and his Paella, and I was so looking forward to watching his demonstration but ended up missing it. However, so many took delight in telling me what a great night it was.

We tasted many great wines, with some fantastic stories behind them. Marisco wines had one of our biggest sales of wines ever and Helen and Wayne made light work of bagging these all up. A pat on the back to the tireless workers that they are.

Choice Fruit products also had a very interesting evening with a huge assortment of products for sale on the night, of which our members availed of in large amounts.

Stu from Butterfly and Scotch in Redcliffs bought his gold award winning bacon and cooked it up for us – very very tasty and also did excellent sales on the night.

The bacon can be bought from Fresh Choice Merivale.

We ended the year with Limoncello and tasted, orangecello, chococello and a rose petal cello which was new to his range – again large orders were done with many being bought as Christmas presents.

We had our Christmas dinner at the club on Monday night with a large attendance of 114 members. We followed the dinner with karaoke which was so much fun. Fortunately we have a couple of good voices within our section and one entertainer who got the crowd clapping and singing. No names mentioned.

Merry Christmas and wishing you all a safe and happy New Year.







Walking Group

We have had some great walks recently discovering or rediscovering parts of Christchurch.

A handful of the section did the Pink Ribbon Walk this year dressed in our lovely outfits. Our yearly trip of a long weekend away has just been. 22 of us ventured to Oamaru and were lucky with the weather.



Our first walk was along Caroline Bay in Timaru on the way. Then on to our motel in Oamaru. On the Saturday morning it was off to Moeraki for a beach walk among the boulders and then a bush walk to the caves at Trotters Gorge. Next day was Sunday so we all went to the market which was fun to see. A small group tried the mini train that runs from the train station to the penguin colony, and visited the colony at night. The Oamaru Gardens, like our beautiful gardens in Christchurch were enjoyed especially with spring flowers out.

We all meet at the Club every Sunday morning at 9.00 am at present with daylight saving & car share to events. There is a small group who meet on Monday and walk from the Club. Both groups welcome new Club Members.

**If you would like to join the Walking Group please contact:
Chairperson Cindy Hey on
027 424 2670 or Secretary
Diane Evans 021 684 165.**





The Travel Section

TRAVEL SECTION XMAS DINNER AT PAPANUI CLUB

Early in December the Travel Section hosted their annual Christmas dinner buffet at the Papanui Club for 49 members. We enjoyed a menu of salads/hot vegetables/ham/fillet of beef and condiments. The desserts were very popular. We enjoyed mini Christmas puddings/brandy snaps/meringues and ice cream etc.

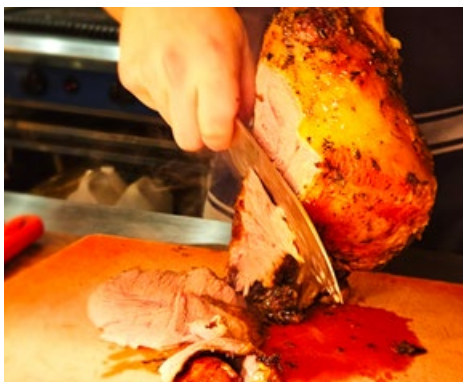
Three members won Christmas basket raffles made up of fine foods other goodies.

On behalf of the Travel Section we would like to wish all Members and staff a very Merry Christmas.

The Travel Section is a friendly group and new members are always welcome. Meeting times are on the 3rd Wednesday of the month at 11am.

If you would like to join or would like more information please phone

Wayne Lovell 03 323 8637
or **Dale Baillie 03 352 0262.**



Newsletter Sections content



All contributions must be in electronic form (email) and if you could please keep copy limited to a maximum of 250 words. Please forward copy and images to gm@papanuiclub.co.nz

The Papanui are
proud supporters of:



**Multiple Sclerosis
& Parkinson's**
CANTERBURY



The Papanui Shuttle Service



Phone: 0800 472 726

Thursday to Sunday from 3pm. Cost: \$2 for 15 years+ (under 15 years free).

NEW MEMBER

Special Join Up Offer*

Get January **FREE**
when you join as a full member
until to 31st March 2027

For
only

\$35

THE
PAPANUI
CLUB • DINING • BARS • FITNESS

1234 JOE BLOGGS
01/01/2026 31/03/2027



*Join from 1st - 31st January 2026.
Membership Renewals start 1st Feb 2026.