

The Papanui Quarterly

— THE —
PAPANUI
CLUB • DINING • BARS • FITNESS



Issue 12 ~ June 2026

The winter warm-up: Food, friends & fantastic sport at The Papanui!

Welcome to Winter at The Papanui, where the season invites you to slow down, warm up and connect with friends old and new.

Settle in for a season of great food and beverages, from hearty winter favourites to lighter bites for a relaxed evening out. Enjoy our winter promotions and all the live action and entertainment on our big-screen TVs.

Remember to keep an eye out for our weekly What's On emails and The Papanui mobile app for exclusive offers and exciting promotions coming your way!

This issue:

A word from
our Club President

Message from our
General Manager

News from our
Club Sections

Club information
and updates

What's on - events
and entertainment

310 Sawyers Arms Rd, Christchurch • PO Box 20140, Bishopdale, Christchurch 8543
Phone: 03 359 9586 • Email: reception@papanuiclub.co.nz • papanuiclub.co.nz



A word from our President

Hello members

The election for the new board for the next two years has now taken place.

As Judy Herkess chose not to stand again, we welcome Rob Armour as a new board member. Welcome, Rob.

I would also like to take this opportunity to personally thank Judy for all the years of service she has given on the board she will be missed by all.

All other current board members will remain in their positions.

Only 352 members voted, and 81 attended the AGM.

Although these numbers were low,

this may suggest that members are satisfied with how the club is being run.

Congratulations to our new Life Members: Helen Lovell, Wayne Lovell and Judy Herkess.

Another highlight since the last report was the ANZAC parade held at The Papanui, and run in conjunction with the Papanui RSA. It was a great day, and if you missed it, we hope to see you there next year.

Thanks for all your support.

Terry Stewart

PRESIDENT



**Live
& Loud!**

ALL BLACKS

Nations Championship



All Blacks v France

Saturday 4 July • 7.10pm kick-off • Christchurch

All Blacks v Italy

Saturday 11 July • 5.10pm kick-off • Wellington

All Blacks v Ireland

Saturday 18 July • 7.10pm kick-off • Auckland

Catch all the action on our big screens!



Message from the General Manager

Can you believe we are already over halfway through the year?

As winter settles in and the days become shorter, it is a timely reminder of the importance of making the most of our warm Club and the facilities. Whether it's enjoying a meal with friends, catching up over a coffee in Founders, trying your luck in the gaming room, attending section activities, or simply escaping the cold for a few hours, every visit helps support the Club and the services we provide. We encourage members to make The Papanui their destination this winter.

To start with, I would personally like to thank Judy for the tremendous contribution she has made to the Club during her years on the Board. The dedication and commitment she has shown will not be forgotten, and I have no doubt she will continue to be someone we can rely on for

support, advice, and the occasional helping hand.

I would also like to welcome Rob Armour to the Board of Directors and congratulate him on his election for the next two-year term.

I would also like to congratulate Judy, along with the lovely Mr and Mrs Lovell, on receiving Life Membership. This recognition is thoroughly deserved, and we sincerely appreciate everything you have done for the Club over many years.

As you will have seen from our end-of-year

reports, the Club has enjoyed another year of strong growth and positive progress. We are excited about what the future holds and remain focused on continuing to improve the facilities, services, and experiences available to our members.

“The Club has enjoyed another year of strong growth and positive progress”

One project currently underway is the development of a major new members' promotion. Subject to approval at our upcoming Board meeting, we will be able to roll out the advertising and share all the details with you. We think it is something members will be excited about, so keep an eye out for further announcements in the coming weeks.

Please stay warm, healthy, and safe throughout winter. Enjoy reading what we having coming up around the club next and I'll see you around the club.

Chat soon.



Mark Belton

GENERAL MANAGER



**Celebrate
Matariki 2026**

- with -

LEVEL 6



**Matches Bar
Friday 10th July ~ 7.30pm**

Thursdays

at The Papanui

Pick 'n Win!

Be in to win
up to \$600 in
points every
Thursday 6pm!*

Every \$10 spent on food & beverage
between 4-6pm earns you a ticket to
place in any of the \$100, \$200 or \$300
boxes to be in the draw.

*Members only.



2 for \$35 Pizza

All day
Thursday

12" Pizzas - see
our menu for the
different varieties.





Cornhole Section

The Cornhole Section Represents NZ!

The Papanui Wranglers took a team of nine to the ACL Australia Cornhole Open #2 over the weekend of 22-24th May.

This was the largest Australian tournament to date with 72 players from Western Australia, Tasmania, Queensland, Victoria, New South Wales and NZ competing with four professional players from The States.





The level of competition was extremely high and our team, Tim & Joe Sefton, Alister & Janean Rance, James & Khloe Peck, Jeff, Kelly & Jacob Root, played very well.

Jeff Root placed 5th in the Tier 2 Singles with the Sefton pair placing 5th in the Tier 2 doubles. Special mention to Jacob Root for scoring an impressive 10 PPR (points per round) in one of his showdowns.

A huge thank you to ACL Australia for running another epic tournament and inviting the Kiwis over again. It is amazing to see the growth of cornhole in Australia and we are

passionate about growing it here in New Zealand.

We also thank our generous sponsors for their support with getting the team there; Signify, Isaac Construction and Level Electrical, as well as our entire section.

Cornhole is a lot of fun while still having that competitive element and we'd love for you to try it for yourself! We play every Wednesday evening in the bowls pavilion at The Papanui, all skill levels are welcome, please reach out to Joe at papanuicornhole@gmail.com for more information.

Burger & Fries

\$15

Every
Monday



— THE —
PAPANUI
CLUB • GYM • BAR • FITNESS

Thank you

9,000

followers!



IGNITE

FITNESS



The best kept secret in the North-West

Lose weight, feel stronger and get toned.
Friendly trainers, programmes available,
ample free parking and great modern facilities.

Mon-Fri: 5:30am-9:30pm
Weekends/Public Holidays: 5:30am-6:30pm.

Join today **only** **\$500**
12 Months Subs

Other terms and payment options are available.

03 359 9586 Ext 706 • gym@papanuiclub.co.nz



Wine & Food

Wow that is the first month of winter over – how quick did that go, especially when we had a day of 24.7 degrees!

Beer Thief brewing came along to Wine and Food in April and we got to taste their craft beer. Though not to everyone's liking orders were placed.

Banh Mi came along in May and while it was also our AGM it was close to one of our biggest nights ever for members turning up – Neptune came along from the Banh Mi factory at the top end of Harewood Road and showed us how to make one (for those who don't know – it is a bread roll made to their recipe filled with chicken or pork). This is a Vietnamese staple. She also brought along enough for everyone to try – hands down very scrummy! I am sure they have had a lot of our members turn up at the shop to buy one.

Brockenchack Wines attended in June – they are an Australian based company who contacted us. We sampled six of their wines and large orders were placed. Helen and Wayne



do a fantastic job of getting the orders delivered to their place and then bagging them for our members – this is a very tedious job ensuring that everyone gets the right order. So a big thanks to them.

Tonight we are off to Thai Gardens in Cranford Street as a function out. This is owned by The Asian Cooking School and Banh Mi shop – everyone is looking forward to tasting very scrumptious food. In October we are organising a bus trip for when the weather should be warmer.

To belong to our section, you must be a financial member of The Papanui and pay an annual subscription of \$10 to belong to the Wine & Food section. For more info please contact: Marilyn Townshend 027 603 1478 or Ady Russell 027 598 6655.



Cheers!
cheers.org.nz

GORDON'S
PINK & SODA

NOW
ON TAP

— THE —
PAPANUI



FOUNDERS
CAFE & BAR

SPECIALS!

MONDAY

FOUNDERS
Breakfast
Burger

ONLY \$15



TUESDAY

FOUNDERS
Breakfast
Burrito

ONLY \$15



Open 8.30am • Coffee • Breakfast • Fresh Baking

**Live
& Loud!**



Catch the NPC on our big screens!



BUNNINGS WAREHOUSE NPC

1 Aug • v Auckland • 7.10pm*

9 Aug • v Otago • 2.05pm

15 Aug • v Bay of Plenty • 2.05pm*

20 Aug • v Northland • 7.10pm*

29 Aug • v Taranaki • 2.05pm

5 Sept • v Waikato • 7.10pm

12 Sept • v Wellington • 7.10pm*

20 Sept • v North Harbour • 2.05pm

26 Sept • v Southland • 5.05pm*

3 Oct • v Manawatu • 2.05pm

9-11 Oct • Quarter Finals

16-17 Oct • Semi-Finals

24 Oct • Final

**Home Games at One NZ Stadium*



No copyright
infringement intended



Indoor Bowls Section

The last three months have been busy for the Indoor Bowls Section, having played off three championships and contributed extensively to both Chartered Clubs and Canterbury Indoor Bowls Association tournaments.

Internally, our first Championship was the Mixed Pairs. 3 teams qualified for the playoffs; Kylie Gould and Phil Thomas, Gordon Dixon and Sue Blackler and finally Trevor Stowell and Gaynor Stevenson. In the semi

final, Gordon and Sue defeated Kylie and Phil by 8 - 7. Gordon and Sue then went on to defeat Trevor and Gaynor in the final decisively, 10 - 3.

Our Championship Singles this year saw 8 players qualify for post section play. Kathleen Gilchrist defeated Trevor Stowell, Sue Blackler defeated John Blackburn, Phil Thomas defeated Ken Blackler and Ashleigh Tanfield defeated Brad Henry. The semifinals saw Ashleigh defeat



Ashleigh Tanfield, Championship Singles winner.



Kylie Gould and Ashleigh Tanfield, Championship Pairs winners.

Kathleen 12 -3 and Sue defeat Phil by 11 - 7. The final saw a win to Ashleigh over Sue by 13 - 5.

Finally we have also had our Championship Pairs. 4 teams qualified. The pairing of Kylie Gould and Ashleigh Tanfield defeated Christine Prattley-Cook and Sue Blackler by 13 - 7 in one semifinal with Brad Henry and Kathleen Gilchrist defeating Neil McConachie and Trevor Stowell by 7 - 4 in the other. Kylie and Ashleigh went on to win the final over Brad and Kathleen by 9 - 8.

The Chartered Clubs Nationals Men's tournament takes place in Whanganui in mid June hosted by the St. John's club. We wish our team of Gordon Dixon, Garry Hall, Ian Sale and Neil McConachie well on their trip north. The Ladies Nationals are being hosted by the Hornby Club here in Christchurch during July.



Ashleigh Tanfield and Daryl Gallagher, Osborne Pairs winners.



Ian Sale, Canterbury Open Singles runner up



Julie and Simon Thomas, winners from the South Island Chartered Clubs Easter tournament.

Outside of the club, Papanui saw success in the Osborne Pairs with Ashleigh Tanfield and Daryl Gallagher winning the competition held at CIBA centre in Kearneys Road.

The Henselite Singles saw a win to Kylie Gould over Simon Thomas in

the final with Julie Thomas finishing third equal. All three are members of the Papanui Indoor Bowls Section. Ian Sale finished runner up in the Canterbury Open Singles as well.

Over the Easter weekend, the Richmond club hosted the South Island Chartered Clubs tournament. Several Papanui members took part with Simon and Julie Thomas winning the Pairs, combining with Ashburton member Michael Lawson to win the Triples and adding Daryl Gallagher to win the Fours. A great weekend for our Section and the Club.

Coming up, we still have the Club Championship Triples and Fours along with the Nationals. So busy times ahead.

If you're interested in Indoor Bowls call Neil McConachie 021 258 9626 or Christine Prattley-Cook 027 788 9925



Sue Blackler and Gordon Dixon, Championship Mixed Pairs winners.




Our Week Every Week

MONDAY

\$15 Burgers & Fries

TUESDAY

NZ's Biggest Weekly **Quiz Night** 
plus \$15 Wraps - add fries \$3.50
SuperGold Card \$15 Roast until 5pm*

WEDNESDAY

Club Members **2 for 1 Meal Deal****

THURSDAY

Pick 'n Win - be in to win up to \$600 in points every Thursday at 6pm***
2 for \$35 Pizzas

FRIDAY

The Papanui Cash Draw 6.30pm***

SATURDAY & SUNDAY

\$30 Platters 2pm - 7pm. Antipasto or Seafood Platter or try our **Smokehouse Sharing Board** for 2-4 people for only **\$65**

Nor'West Buffet

All members and non-members welcome.
Open Thursday to Saturday from 5.30pm.
Sunday from 5pm.

Shuttles

Available Thursday to Sunday from 3pm.

Raffles

Thursday - Saturday from 4pm,
Sunday from 3pm.

Everyone Welcome!

* You must present your SuperGold card to receive the roast deal.

** See Wednesday Menu for T&Cs.

*** All weekly draws are for The Papanui members only, see our website for T&Cs.

Reception - open Monday to Thursday 9am-5pm,
Friday 9am-6.30pm, Saturday & Sunday 11am-2pm.
www.papanuiclub.co.nz

**Download our
Mobile App**





The Travel Section

TRAVEL SECTION - VISIT TO FERRYMEAD

End of March, 28 of us travelled by bus to Ferrymead Heritage Village. We enjoyed walking around the Village with a self-guided map.

Most popular was the Hall of Flame which was manned by retired fire fighters who were only too happy to explain the many vehicles and exhibits.

The Church came from Ellesmere - it had a beautiful painted organ dating back to the 1800s. Next was the Cobb Cottage/Police Station/Rural History. Museum and much more.



Next stop Valley Inn Tavern where we enjoyed a drink and a very nice hot meal. We were fascinated with the old brick lined artesian well situated in the Bar. The well was sunk in the 1860s - from which they drew water for the animals working on the Railway Tunnel which opened in 1867.

The predicted rain forecast for earlier kept away and appeared before we boarded the bus back to the Papanui Club.

If you would like to join or would like more information please phone **Wayne Lovell 03 323 8637** or **Dale Baillie 03 352 0262.**



A vibrant yellow background featuring various tropical and leisure items: a woven straw hat, a pair of sunglasses, a white cup of coffee on a saucer, a seashell, and some green palm leaves.

**Papanui Club Travel Section
30th Anniversary Celebration**

**Sunday 19th July 2026
in Founders Cafe**

Cost \$20
Commencing at 5pm. Tea included.

All previous members welcome.

**R.S.V.P by 10th July to
Dale Ph: 352 0262 or
Wayne Ph: 021 045 0524**



NOR'WEST BUFFET

Midwinter

Christmas

Dinner Buffet

**Saturday 18th July
and Sunday 19th July**

Only \$39.50
per head

Kids - \$2 per year of age up to 11.

Kids - 12 years and over full price.

Bookings Essential

Shuttle Service



Thursday to Sunday
From 3pm - \$4 per ride
(Under 15 years free)

10 ride concession card **\$30**
available at the bar, only



Leisure Marching Section

Celebrating 25 years of friendship, teamwork, and marching pride.

This year marks a very special milestone for the Papanui Paraders Leisure Marching Team as we celebrate 25 years with the Papanui Club. In March, we enjoyed a small celebration with some of our original members, making it a memorable afternoon for everyone who attended. It was a wonderful opportunity to catch up with both current and former team members, share stories of trips away, enjoy plenty of laughter, cut the celebration cake, and take a moment to remember those who are no longer with us. It was a fitting way

to honour the past while looking forward to the future.

The team also took part in the NZ Display Day held in Rangiora in March. We all put our best foot forward, and everyone was extremely proud of the display we presented. It was a great chance to represent our club and celebrate the spirit of leisure marching alongside others who share the same passion.

Now, as the new season begins, the team is busy learning a new marching plan for the year ahead. There is plenty of enthusiasm as we prepare for another exciting season together.



We are also delighted to welcome four new team members this year. At the same time, we have had to say goodbye for now to our longest-serving marching team member, Sandy, who has decided to put her boots up for the time being. We thank Sandy for her years of dedication and look forward to seeing her again in the future.

Looking ahead, we are excited to be marching in the South Island Display

on 16-17 October. We will also be holding another car boot sale on Sunday 4 October, so be sure to mark the date in your calendars and come along to support the team.

As always, we are grateful to the club for its ongoing support, which helps make all of these activities possible. Here's to another wonderful year of friendship, fun, and marching – and to the next 25 years ahead.

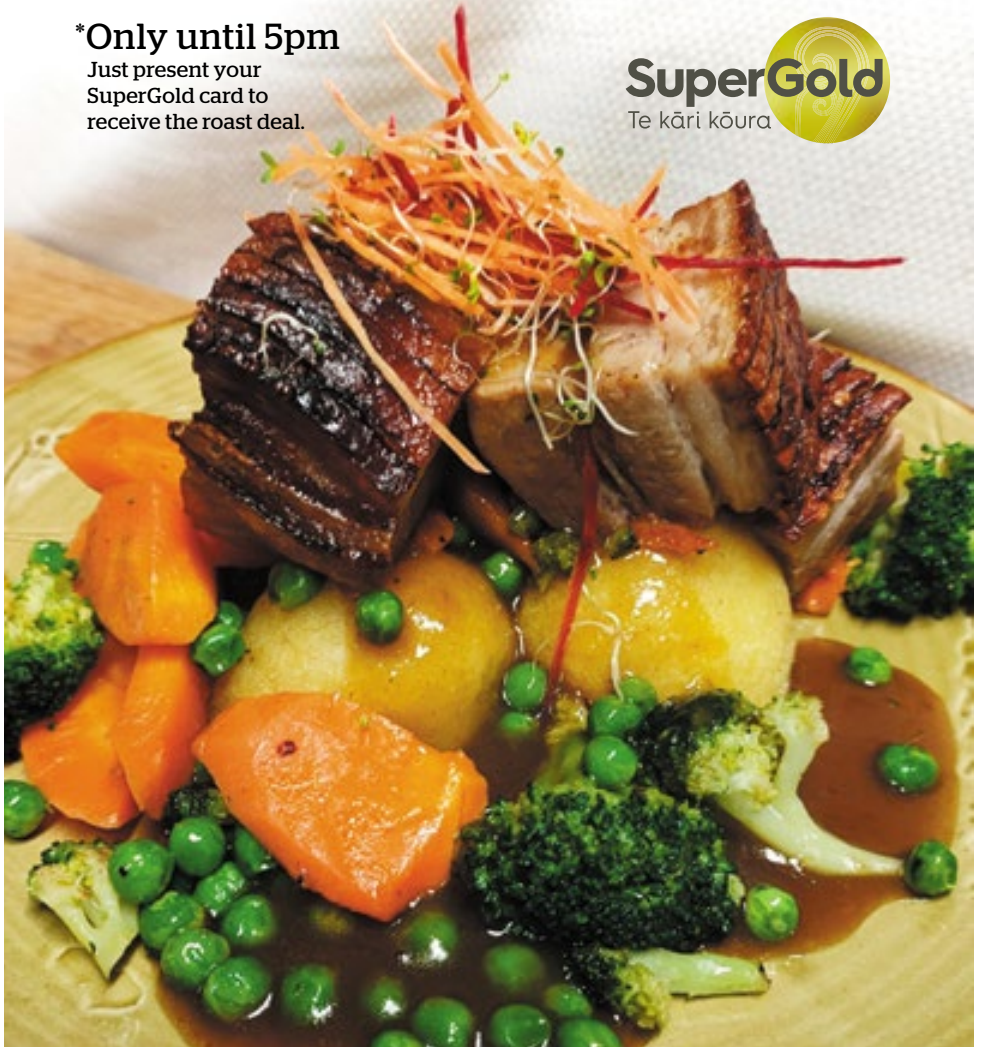


Tuesday SuperGold Card

\$15 Roast*

***Only until 5pm**

Just present your
SuperGold card to
receive the roast deal.



All Blacks tour of South Africa



RUGBY'S
GREATEST
RIVALRY

the rivalry
RETURNS



Catch all the replays on our big screens!



Petanque Section

Our members have been busy over the last few months participating in our weekly practice sessions and our club competitions.

Our two-weekly practice sessions have been very well attended (often in testing weather conditions...) as have our club competitions.

Several of our members have also participated in competitions hosted by other Petanque groups around the Canterbury area, many of our members enjoying excellent success.

Since March some of our members have been busy competing in five

separate competitions hosted by our section.

Our own club competitions were: -

3 March 2026 Papanui Club Men's and Ladies Singles

Mens Singles

1st - John Smart

2nd - David Beer

Ladies Singles

1st - Catherine Patey

2nd - Teresa Newman



John Smart



Catherine Patey

7 April 2026 Papanui Club Open Men's and Ladies Doubles

Men's Doubles

1st - Phil Patey and Art Vernon

2nd - Bruce Cameron and George Preston

Ladies Doubles

1st - Anne Clarkson and Sharon Brook

2nd - Caroline Kinloch and Catherine Patey



Phil and Art



Anne Clarkson and Sharon Brook

14 April 2026 Papanui Club Drawn Triples

1st - Caroline Kinloch, Colin Wafer and Sharon Brook

2nd - Rob Armour, Teresa Newman and Eugine Morgan-Coakle



Caroline, Colin and Sharon

5 May 2026 Papanui Marjory Vincent Drawn Pairs Trophy

1st - Alice McGuigan, Teresa Newman

2nd - Caroline Kinloch and Anne Clarkson



Alice and Teresa

2 June 2026 John Yellowlees Memorial Trophy Three Boules Triples

1st - Alethea Leith, Sharon Brook and Caroline Kinloch

2nd - Rob Armour, Helen Lovell and Art Vernon



Alethea, Sharon and Caroline

Congratulations all.

Many thanks to the Match Committee members, Graeme Harper, Jim Tait and Linda Kay, for the smooth running of our club competitions.

Competitions are a great way to learn more skills and pick up some great playing tips, plus they are excellent social events. Good luck to all our members who compete.

Two of our club members, Bruce Cameron and John Smart have recently commenced training sessions on Tuesday mornings for any of our Petanque Section members who want extra training in the skills of the game. It has been very well patronised and enjoyed by the “trainers” and participants. This training will now be part of what the club offers our members.

Section practices days are Tuesday and Sundays - 12.45pm to 3.00pm. Do come and to see what Petanque is about.

You will be welcomed on any of the practice days by our friendly members who are keen to spend time introducing you to the game and pass on their skills and knowledge of petanque.



Family time at The Papanui

A couple of reminders for parents

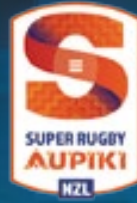
- Please ensure children are supervised around the club at all times.
- For the safety of our senior members, children are not allowed to run inside the club.
- Children under 16 using the pool tables must be under adult supervision at all times.

— THE —
PAPANUI
CLUB • DINING • BARS • FITNESS



NEW
GUINNESS 0%
**ALL THE TASTE
NONE OF THE
ALCOHOL**

Cheers!
cheers.org.nz



Super Rugby Aupiki 2026

Support our girls in their quest for glory!
If it's not on the screens please just ask the staff.



Cheers to Zero

This Dry July, check out our range of alcohol-free drinks.



DRY JULY
FOUNDATION

Raising funds for people affected by cancer



Darts Section

This year we have started the year with a record of 55 members signed up to play.

The winter league started on the 1st of April with a record of 9 teams with the following results.

PREMIER (out of 12 teams)
Papanui A currently 7th

GRADE 1 (out of 16 teams)
Papanui B currently 12th
Papanui C currently 7th
Papanui D currently 11th

GRADE 2 (out of 20 teams)
Papanui E currently 1st
Papanui F currently 9th
Papanui G currently 11th
Papanui H currently 19th

GRADE 3
Papanui I currently 2nd

As a group of the 13 rounds we have 85 180's. With the race to the end of year Trophy Jared Court 2nd with 10 and Jordan Matthews leading this with 15.

Every 4th Monday of the month we have a Papanui darts Players Championship running with Aaron Giddy leading this with 26 points and Jared Court second with 20 points.

22nd of June we had our Papanui darts Open Singles. Jared Court won this beating Jordan Matthews 3/1.



UP AND COMING EVENTS

6th of July - Papanui darts Mixed pairs (Members & Non Members). For this you can have your partner play and they do not have to be a member of the Club or section, Just the opposite gender.

12th of July - Darts Canterbury - Alf Franklin Memorial (Presidents Invitation) played at Kaiapoi.

21st of July to 25th of July
DNZ Nationals being held at the Richmond Club.

2nd of August - CCCCDA - Singles - Upper Grades played at Templeton

2nd of August - Darts Canterbury - Married and De-facto Couples played at Papanui.

24th of August - Papanui darts Crickets pairs - Please note if you haven't organised a partner and want to play, be in the darts at 6.45pm and we'll put you with a partner on the night.

30th of August - Darts Canterbury - Mens & Ladies Pairs played at Hornby.

20th of September - CCCCDA - Singles - Lower Grades 2 & 3 played at Papanui.

28th of September - Papanui Darts Graded Singles (Pre/G1, G2, G3).

The 5th of October will be the overrun night if finals cannot be completed.

2nd of November - Presidents Cup (x1 Pap Member - x1 non Member doubles). Your partner for this cannot be a current or past member of the darts section.

Monday evening Public nights and practice games for members.

This is open for the public to attend free of charge. Starts at 7pm every Monday.

This is going well with on average of one person every 2 weeks enquiring of joining.

We also have Brooke, who is in a wheel chair and his carer Clayton that come down and join in every Monday night, they are a pleasure to have around and fitted in with the group with ease.

If you are interested in joining the Darts section or require more information please email Barry: papanuidarts@gmail.com or call 021 678 415.





Outdoor Bowls

INTERCLUB WINNERS 2026

AC Pairs Pre Xmas Winners - Greg Hughes, Jono Radka

Men's Double Triples - Div 2 - Bill Ritchie, Rex Collins, Colin Fyffe, Brian Breen, Keith Thomas, John Peyton.

Over 60's Sevens - Div 5 - Calvin Mahan, Sydney Oliver-Cook, Carl Daly, Rex Collins, Ross Turner, Trevor Sutherland, Colin Fyffe.

AC Pairs Post Xmas - Joseph van Der Pennen, Kate Kennedy Newton

CENTRE TITLES 2026

Women's U8 Singles - Kate Kennedy Newton

Men's U8 Singles - Rodney Downes

Men's Singles - Joseph van der Pennen

Mixed Pairs - Kate Kennedy Newton, Joseph van der Pennen

Mixed Fours - Linton Churches, Paul Veitch, Lisa Mitchell, Ali Quinn

Very Special Awards for Rodney Downes - not easy to achieve these results: **Rodney Downes - 1st White Star + 3 under 5's Titles.**

WINTER

Through the winter we play big Indoor Bowls in The Bowls Clubrooms. Tuesday and Thursday mornings for Ladies and Men Tuesday afternoon 1pm start and Thursday afternoon Mixed 1pm start, be there by 12.45pm or contact our secretary on papclubbowls@gmail.com.

New players are always welcome.





Rodney Downes - 1st White Star + 3 under 5's Titles.



Kate Kennedy Newton, Joseph van der Pennen.

FOUNDERS

CAFE & BAR

Open 8.30am ~ 3pm

Coffee • Breakfast • Fresh Baking • Functions



**Live
& Loud!**



ONE NZ WARRIORS

Big men, big hits, on our big screens!





Golf Section

The golf sections last game was Sunday 14th June held at the Harewood Golf Club where 36 players teed off in extremely foggy conditions with the first 3 to 4 holes played with very little vision once the fog cleared it was a very pleasant mild sunny afternoon.

Quote from one life member (Sooty) prior to tee off “you can't see the ball” ...one response was you'll be okay if you don't hit it out of sight... we all duly teed off!

It was the start of our match playing knockout with two games being played, Collins versus Collins with Sue doing right thing and allowing her husband Chris to win.

The second match between Wayne Thomsen and Peter (Trout) Haddock went to the last Hole and was won 1 up by Wayne Thomsen.

The day saw some very good Stableford scoring with Jay Blease 45, Mark Bray 42 and Daron Weekes 39 points.

Next game is at Kaiapoi Golf Club which will be our 'Fun Day' with the format still to be finalised and a more extensive prize table will be in play for this day.

We look forward to a good turnout again to enjoy friendship, banter and golf!



A few keen members waiting to tee off at Clearwater Golf Club - held in May.



Dale Schultz losing his head!



When the fog lifted, it turned out to be a great day for golf.



Gavin Russell proudly wearing the pink jacket he won at Harewood Golf Club.

SHARING SPECIAL

Every Weekend 2~7pm

Ploughman's or Seafood Platter **only \$30**



Or try our
Smokehouse
Sharing
Board



only \$65
For 2-4 people



BELIEVE IT

OR NOT ?

QUIZ EVENTS

Join the Clubs NZ Quiz League!

**Is The Papanui
the smartest club in NZ?**

Prove it!

Join your team up online and compare results against teams across the country. Simply scan the QR code on the big screens at the beginning of the quiz night to join and be in to win the Clubs NZ Quiz League trophy.

Starts from: Week of 1 June 2026

Season: 13-week Winter League (June-August)

Qualification: Minimum of 8 weekly scores

Winner: Highest average team score across the season

Scores will be tracked nationally via the leaderboard, allowing clubs to see how they stack up week-to-week.



CLUBS
NEW ZEALAND INC



Walking Group

The Walking Section continues to have reasonable weather on our weekly walks. Hopefully this continues through Winter now we have begun daylight saving again.

We continue to enjoy walks, in areas like Styx Mill, Pegasus, Adventure Playground, Kaiapoi and even our local area Bishopdale. One of our recent walks was Bottle Lake Forest and there certainly were a large number of cyclists, walkers and runners enjoying the area as it had stopped raining in time for the walk but began again in the afternoon.

We are looking forward to a mid winter xmas sometime in June or July and with the cold weather we have been having lately indicates

winter is definitely on its way.

Our AGM this year was held on 17th May at the Papanui Club. The committee remains unchanged and we look forward to some great walks over the next few months.

We all meet at the Club every Sunday morning at 9.30 am at present with daylight saving & car share to events. There is a small group who meet on Monday and walk from the Club. Both groups welcome new Club Members.

**If you would like to join the Walking Group please contact:
Chairperson Cindy Hey on
027 424 2670 or Secretary
Diane Evans 021 684 165.**





The Papanui are
proud supporters of:



**Multiple Sclerosis
& Parkinson's**
CANTERBURY





**Looking for a great venue
to hold your function?**

FOUNDERS

CAFE & BAR

Founders Cafe & Bar at The Papanui could be just what you're looking for.

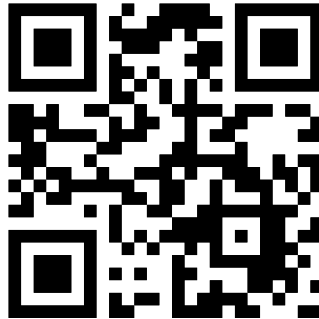
For groups from 20 - 100 with fantastic ambience it is the perfect venue for corporate functions, parties or any special occasion.

- Great indoor or outdoor flow
- Private function room
- On-site bar and catering
- Superb food options
- Plenty of on-site parking
- Just 10 minutes from the city!

For further information call **359 9586** or email **functions@papanuiclub.co.nz**



Download our Mobile App



Join or renew membership, earn and view loyalty points, view transactions and enjoy all our Club discounts and promotions!

1. Simply scan the QR code above, or visit Google Play for Android or the AppStore for Mac and search The Papanui.
2. Download the The Papanui app, to install.
3. Existing members - click the light blue RESET/REQUEST PIN button and follow the instructions.
4. New members - click the red JOIN NOW button to join and follow the instructions.
5. Please be aware when joining for the first time or resetting your PIN number your email confirmation may appear in your SPAM or JUNK folder.
6. When you log in, click on the Remember Me box to avoid having to log in every time.
7. Your membership details and Club information are now at your fingertips.

Please make sure you check My Details are all correct to be part of our Club discounts and promotions!



Garden Section

Welcome to the garden section for Autumn/Winter 2026.

We finished our year in 2025 with a High tea & garden viewing at Natures Haven Country Garden in West Eyreton. A beautiful property, delicious food & wonderful hosts.

We have a great programme planned for this year we started with a talk on Alpine plants in February & a bus trip to the Amberley area. We've also had an interesting talk on fuchsias, New

Zealand mistletoe, rhodies and azaleas. We always have a great time enjoying some special gardens and good company.

Every month we have a casual morning tea for our members on the last Thursday of the month in Founders Cafe. This gives us a chance to get to know each other better over a coffee and cake!

New members are always welcome - we meet on the second Wednesday of the month 7pm in meeting room 1.





CONGRATS!

Life Members

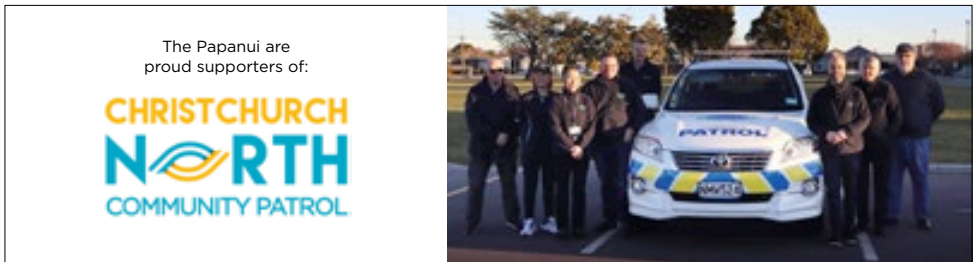
On behalf of The Papanui Board and Management we would like to congratulate Judy Herkess, along with Helen and Wayne Lovell, on receiving Life Memberships. This recognition is for outstanding service to the Papanui Club and is thoroughly deserved, we sincerely appreciate everything they have done for the club over many years.



Newsletter Sections content



All contributions must be in electronic form (email) and if you could please keep copy limited to a maximum of 250 words. Please forward copy and images to gm@papanuiclub.co.nz





— THE —
PAPANUI

CLUB • DINING • BARS • FITNESS

Join The Papanui today

Annual membership is just **\$35** and the perks are amazing!



Free Birthday Buffet

Valued at \$35, celebrate your special day on us!



3% Reward Points

Earn points every time you spend and enjoy the rewards.



Exclusive Promotions

Enter members-only cash draws and major giveaways!



Members - Only Deals

Savour our 2-for-1 Wednesday Meal Deal!



Activities - 15 different sport and social sections to join.



Modern & Clean Facilities

Relax in style and comfort.



Affordable Shuttle Service

Convenient and budget friendly transportation.



Live Entertainment

Enjoy top-notch performances as part of the fun!



Digital Membership Card/ Mobile App

Enjoy seamless access to your benefits, exclusive offers and updates all in one place!



Coffee Card

Buy 6 hot drinks in Founders Cafe or in the Club Bar and get the 7th free!



Don't miss out on these amazing benefits.

Join or renew today!

Joining is as easy as downloading our mobile app or going to our website www.papanuiclub.co.nz/membership-information or visiting our reception.

Download our Mobile App

