

**Big Idea: 1. Sustainability:** It is everyone's responsibility to use the Earth and its resources in a way that is sustainable.

Carbon in the atmosphere is making our planet warmer, to levels which threaten all life on Earth. But it is not too late; if we act responsibly now, we can make the world a better, more sustainable home for everyone.



We will embrace our creativity, using our knowledge of colour and inspiration from artists to produce original artwork.

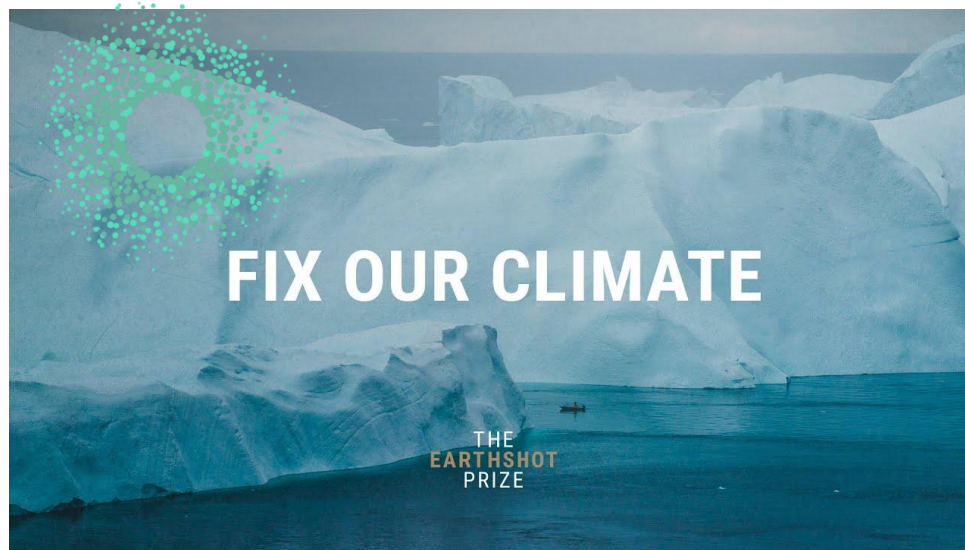


We aspire to fix our climate, do all we can to heal the Earth and aspire others to do this too.

### Broadening our experiences:

You will take part in a local beach clean to protect and preserve our environment. While at the beach, you will have the opportunity to sketch your surroundings and then add colour back at school to demonstrate what you have learnt about colour and mood.

## How can we fix our climate?



Have you ever stopped to think about our planet and how well we are looking after it?

In this Learning Enquiry, you will learn how our climate is changing and causing our polar ice caps to melt. We need to slow down climate change by removing more carbon from the atmosphere than we put into it. You will look at how we can work together to fix our climate so that life everywhere can thrive for generations to come.

You will study our Earth closely, with a particular focus on the polar regions and how the animals are being affected due to climate change. We will think of ideas about how we can make a change.

You will learn how colour can represent mood in art. You will study how artists such as Pablo Picasso, Van Gough and Paul Klee use colour to share a mood or feeling. You will learn more about how colour can be used, and you will use art to share how the climate is being affected with others.

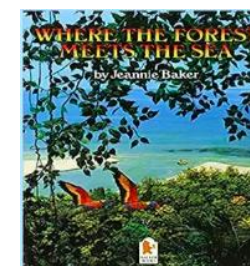
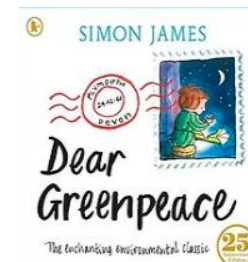
### Our Key vocabulary

Complementary	Colours which are opposite to each other on the colour wheel.
Tone	Tone refers to how light or dark something is.
Warm	Warm colours are colours with red, orange and yellow in them.
Cool	Cool colours are colours with green, blue and magenta.
Mood	Mood is the atmosphere or feeling expressed.
Polar	Anything relating to the North or South pole.
Hemisphere	A half of the Earth
Arctic	The regions around the North Pole.
Sustainable	Able to be maintained at a certain rate or level.
Extinction	When there are no more of a species left in the wild.

Texts that we will be reading in school:



Recommended texts to share at home:





## Geography Sticky Knowledge

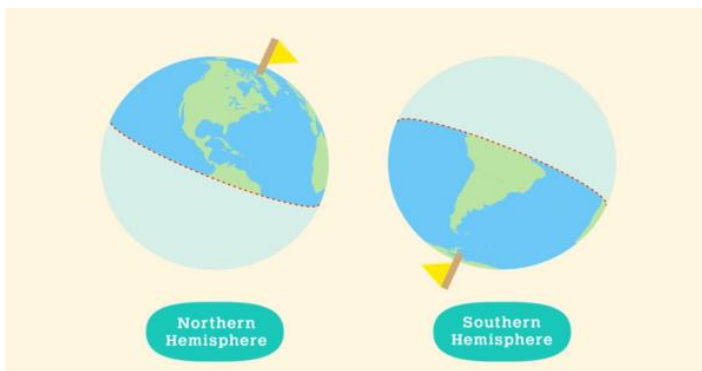
The Arctic is in the Northern hemisphere.

The Antarctic is in the Southern hemisphere.

Melting icecaps in the Polar regions are causing seas to rise.

Antarctica is the only continent without any countries.

Carbon emissions are causing the Earth's temperature to rise.



## Art Sticky Knowledge

Picasso was well known for a style of art called his 'blue period'. At this time, he was very sad. His paintings were very serious and mostly done in dark blues and greens.

Grey, black, darker colours can make the tone of a colour darker.

White and lighter colours can make the tone of a colour lighter.

When we draw an object we start by drawing lightly and then add on the contour lines (outlines) in a darker tone.

Cool colours are said to move away into the background. Whilst warm colours are said to move towards you.

