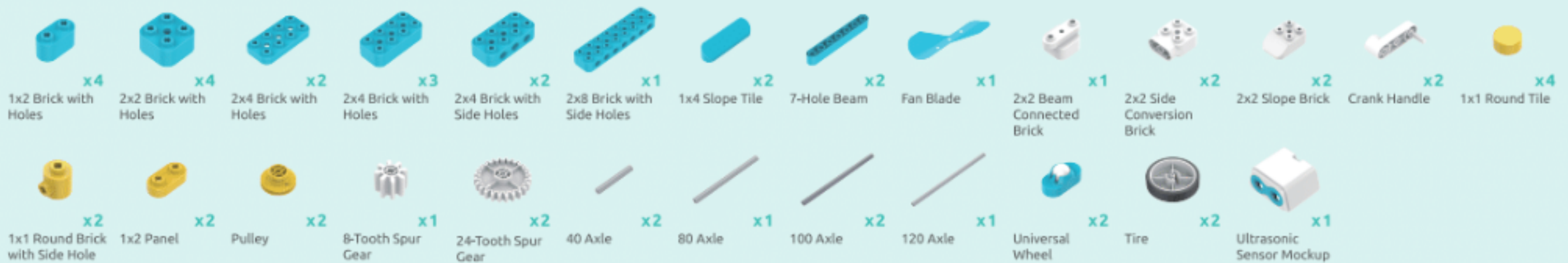


## Parts List

### Electronic Parts



### Structural Parts



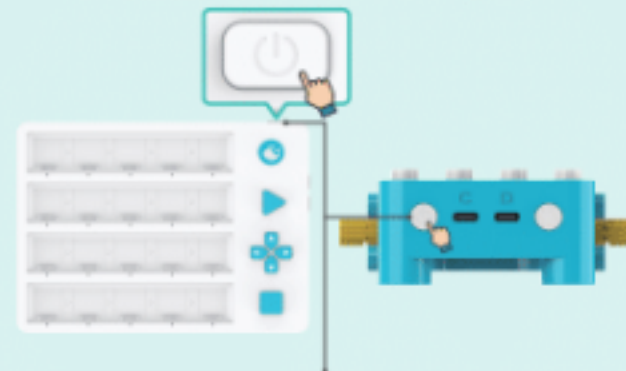
## Quick Start

### 1. Power Supply



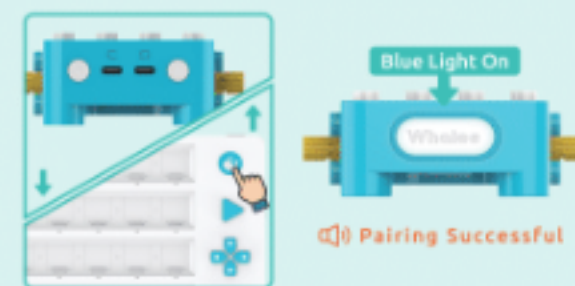
- Controller:  
Connect the Type-C cable to the controller's Port C or D.
- Smart panel:  
Put two AAA batteries into the back of the smart panel.

### 2. Power On/Off



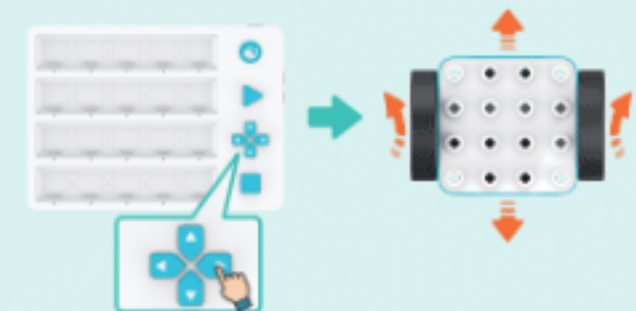
- Power on: Press the power button.  
Power off: Press and hold the power button.

### 3. Pairing



- ① Put the controller close to the smart panel.
- ② Press and hold the logo button on the smart panel.
- ③ When the pairing succeeds, the controller says "pairing successful" and its whales button shows a solid blue light.

### 4. Remote Control



- Press a directional button on the smart panel.
- If you have installed wheels or tires onto the controller, the motors spin and the controller moves in the specified direction.